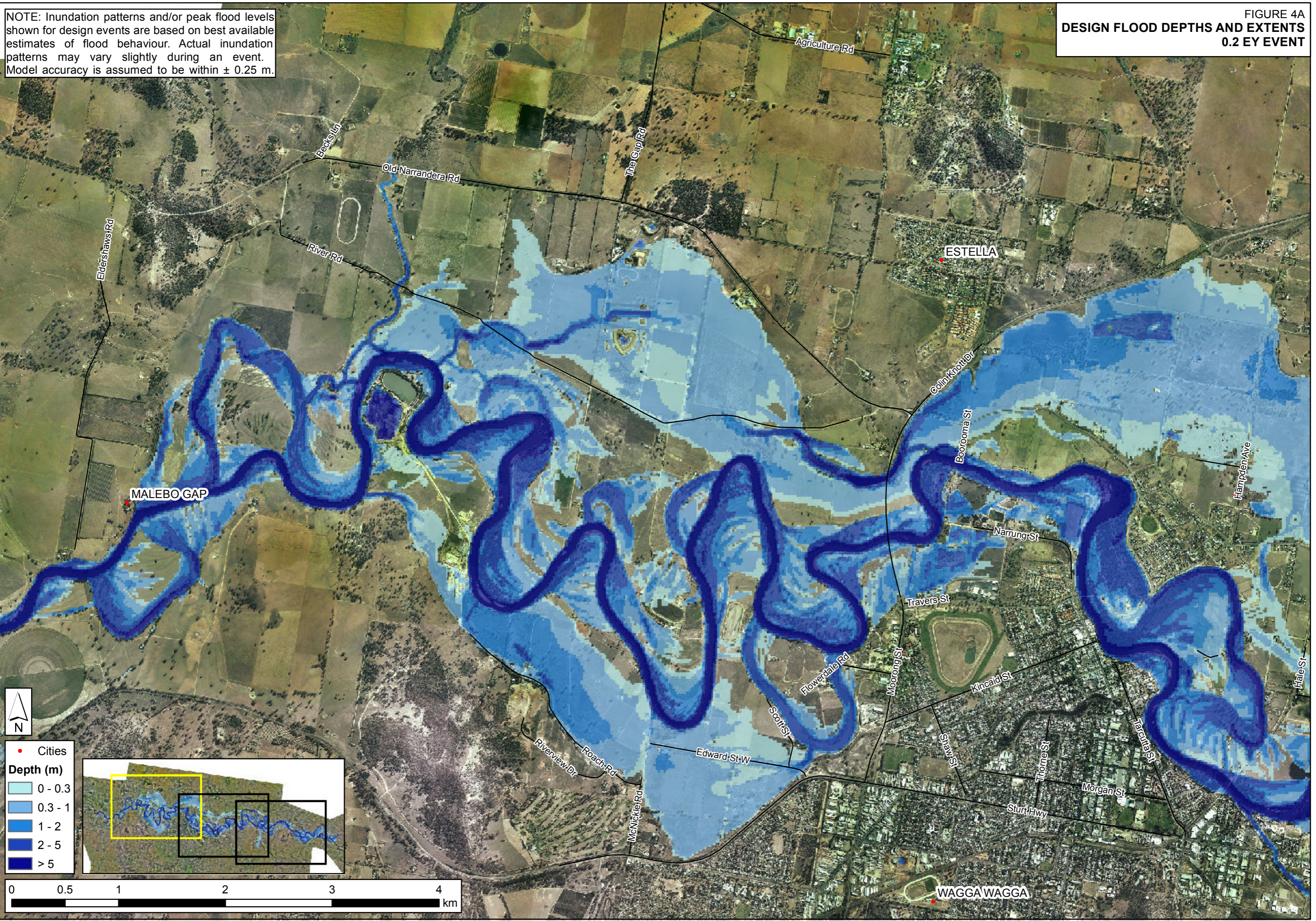


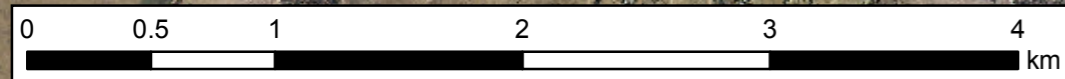
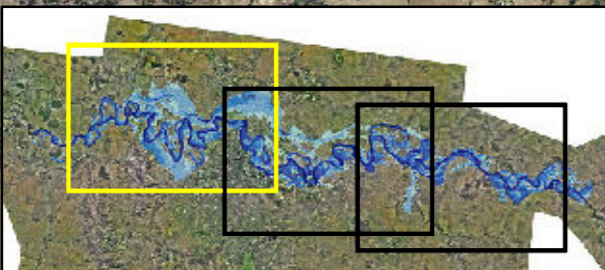
NOTE: Inundation patterns and/or peak flood levels shown for design events are based on best available estimates of flood behaviour. Actual inundation patterns may vary slightly during an event. Model accuracy is assumed to be within  $\pm 0.25$  m.

FIGURE 4A  
DESIGN FLOOD DEPTHS AND EXTENTS  
0.2 EY EVENT

J:\Jobs\1160\17\ARC\ARC\_Maps\Report\Stage2\Figure04A\_Wagga\_02EY\_Design Flood Depths and Extents.mxd

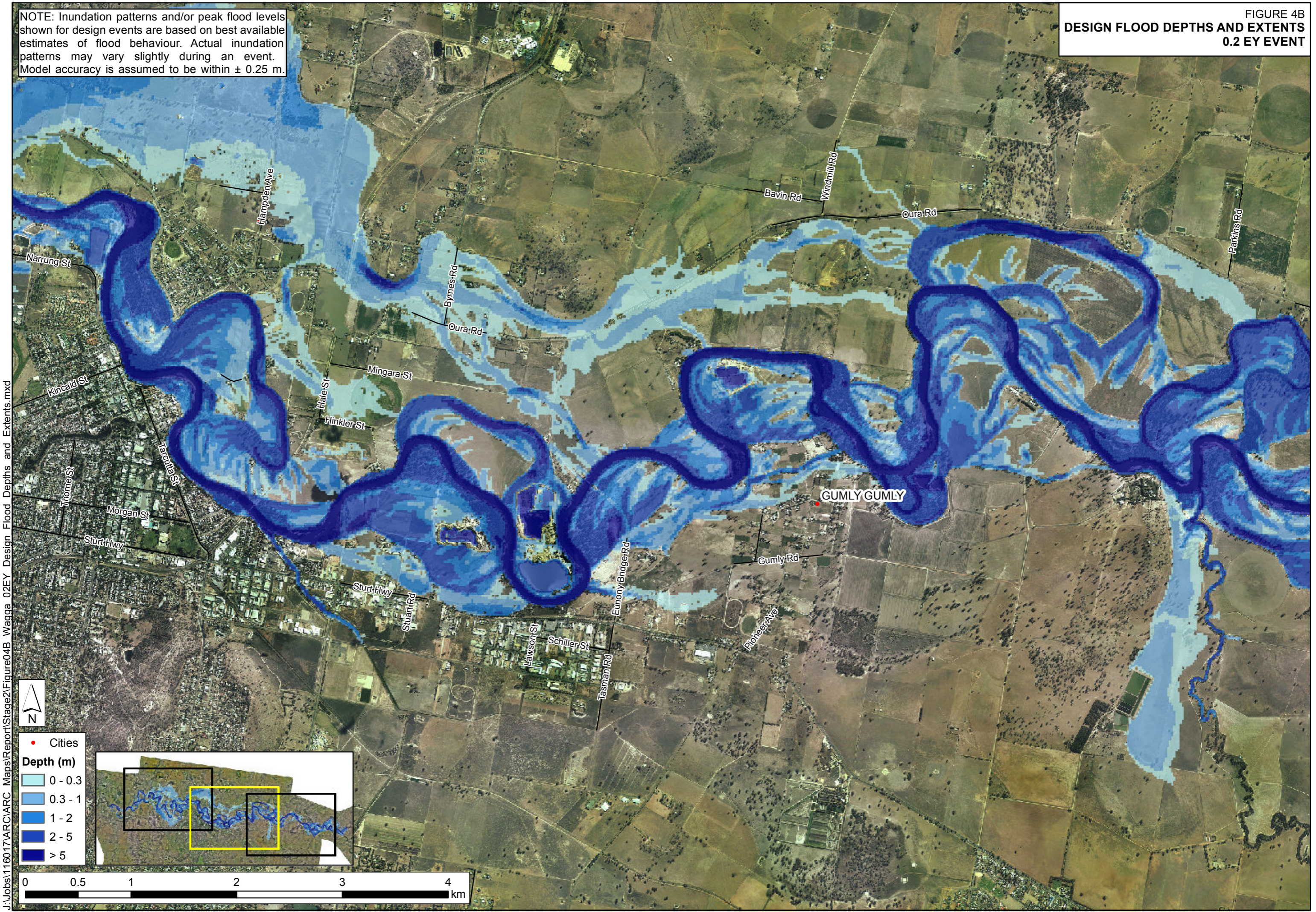


- Cities
- Depth (m)**
- 0 - 0.3
- 0.3 - 1
- 1 - 2
- 2 - 5
- > 5



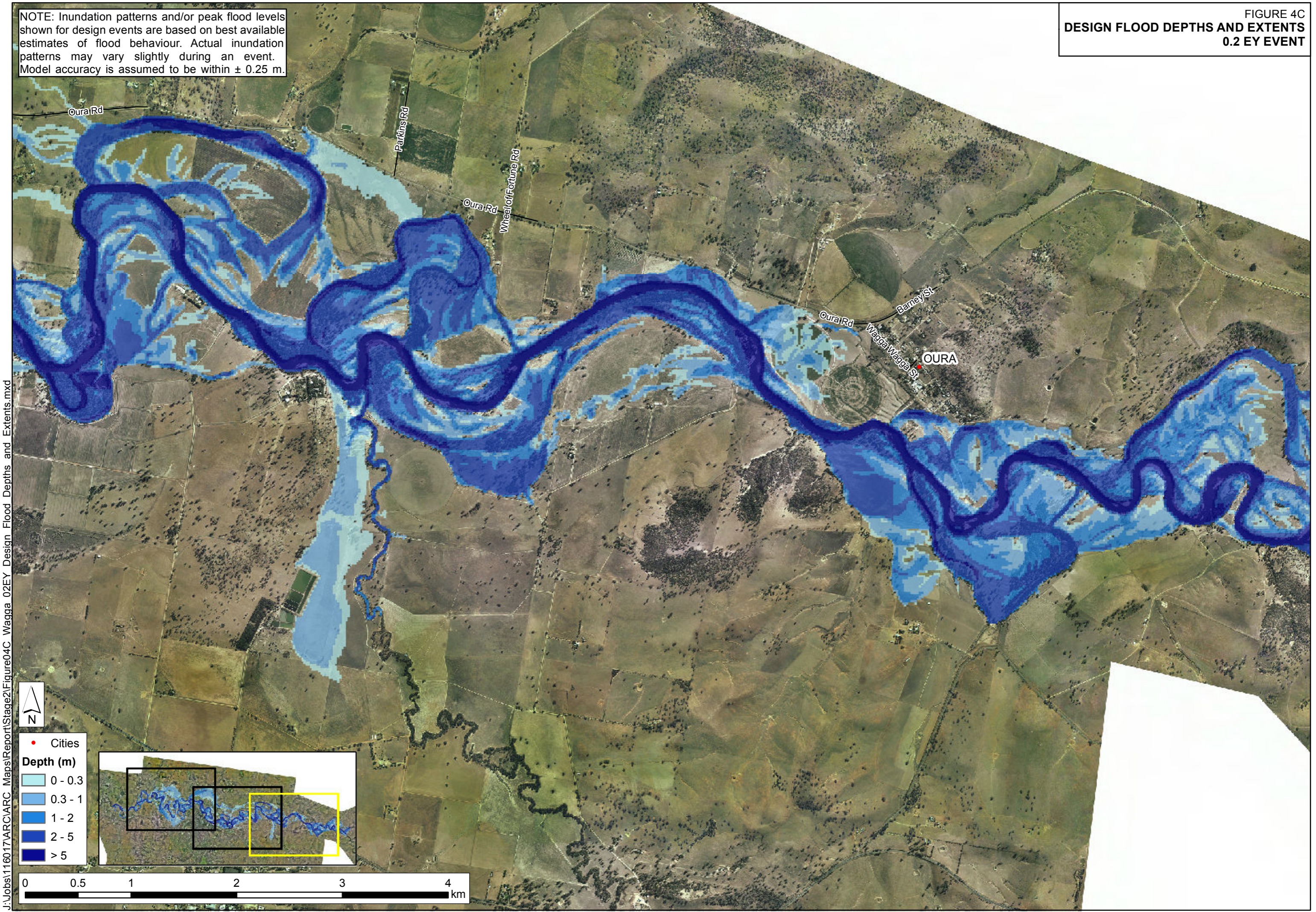
NOTE: Inundation patterns and/or peak flood levels shown for design events are based on best available estimates of flood behaviour. Actual inundation patterns may vary slightly during an event. Model accuracy is assumed to be within  $\pm 0.25$  m.

FIGURE 4B  
DESIGN FLOOD DEPTHS AND EXTENTS  
0.2 EY EVENT



NOTE: Inundation patterns and/or peak flood levels shown for design events are based on best available estimates of flood behaviour. Actual inundation patterns may vary slightly during an event. Model accuracy is assumed to be within  $\pm 0.25$  m.

FIGURE 4C  
DESIGN FLOOD DEPTHS AND EXTENTS  
0.2 EY EVENT



J:\Jobs\1160\17\ARC\ARC\_Maps\Report\Stage2\Figure4C\_Wagga\_02EY\_Design Flood Depths and Extents.mxd