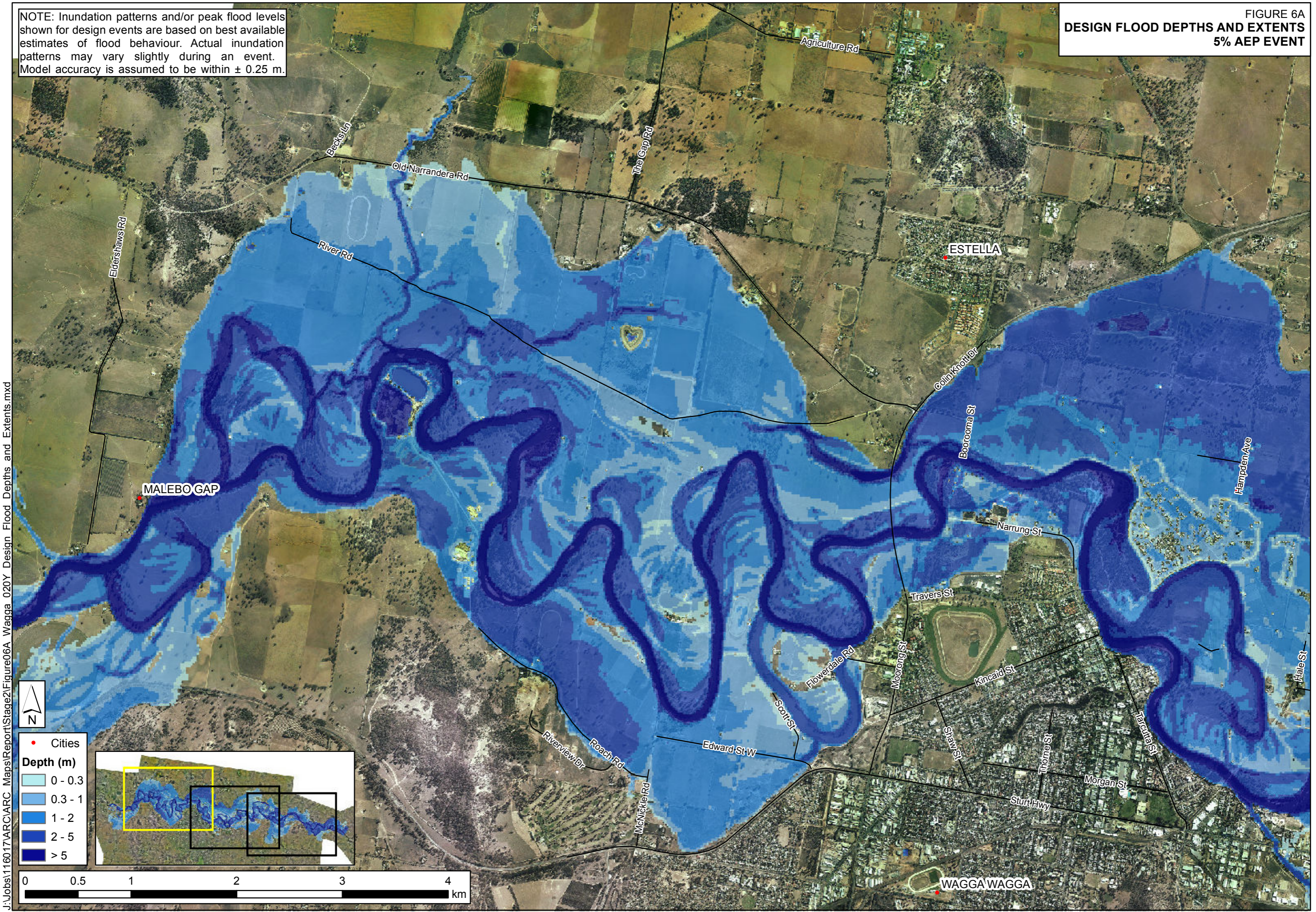


NOTE: Inundation patterns and/or peak flood levels shown for design events are based on best available estimates of flood behaviour. Actual inundation patterns may vary slightly during an event. Model accuracy is assumed to be within ± 0.25 m.

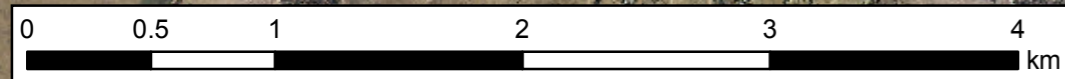
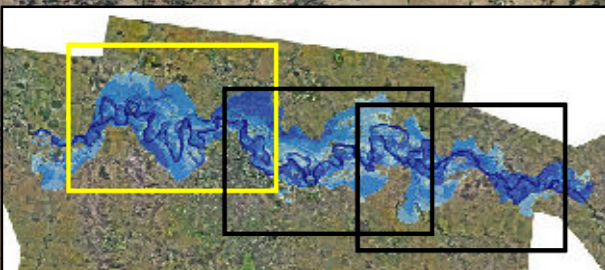
FIGURE 6A
DESIGN FLOOD DEPTHS AND EXTENTS
5% AEP EVENT



J:\Jobs\1160\17\ARC\ARC_Maps\Report\Stage2\Figure06A_Wagga_020Y_Design_Flood_Depths_and_Extents.mxd

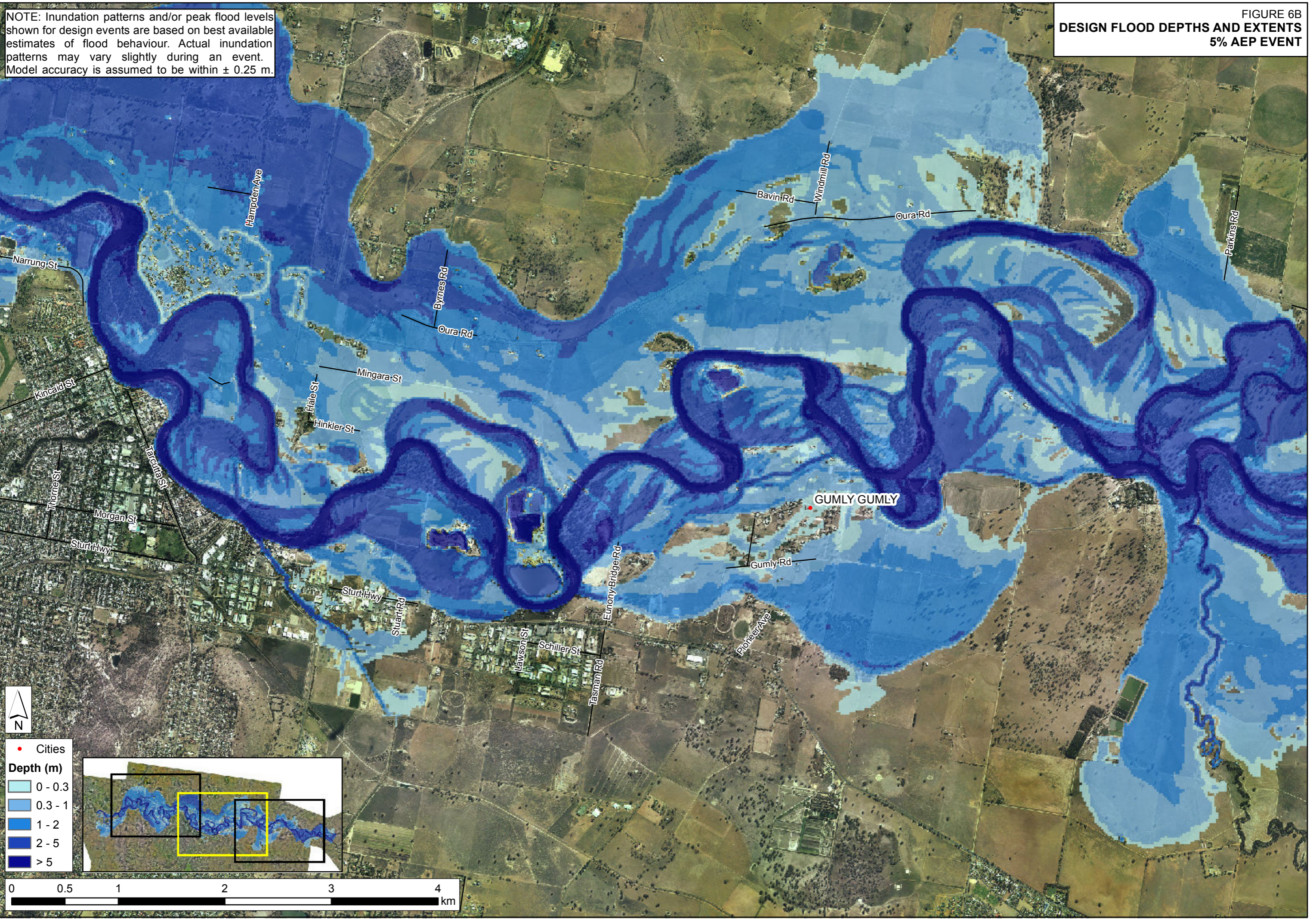


- Cities
- Depth (m)**
- 0 - 0.3
- 0.3 - 1
- 1 - 2
- 2 - 5
- > 5



NOTE: Inundation patterns and/or peak flood levels shown for design events are based on best available estimates of flood behaviour. Actual inundation patterns may vary slightly during an event. Model accuracy is assumed to be within ± 0.25 m.

FIGURE 6B
DESIGN FLOOD DEPTHS AND EXTENTS
5% AEP EVENT



J:\Jobs\1160\17\ARC Maps\Report\Stage2\Figure06B Wagga 020Y Design Flood Depths and Extents.mxd

Legend:

- Cities

Depth (m)

- 0 - 0.3
- 0.3 - 1
- 1 - 2
- 2 - 5
- > 5

Scale: 0 0.5 1 2 3 4 km

FIGURE 6C
DESIGN FLOOD DEPTHS AND EXTENTS
5% AEP EVENT

NOTE: Inundation patterns and/or peak flood levels shown for design events are based on best available estimates of flood behaviour. Actual inundation patterns may vary slightly during an event. Model accuracy is assumed to be within ± 0.25 m.

