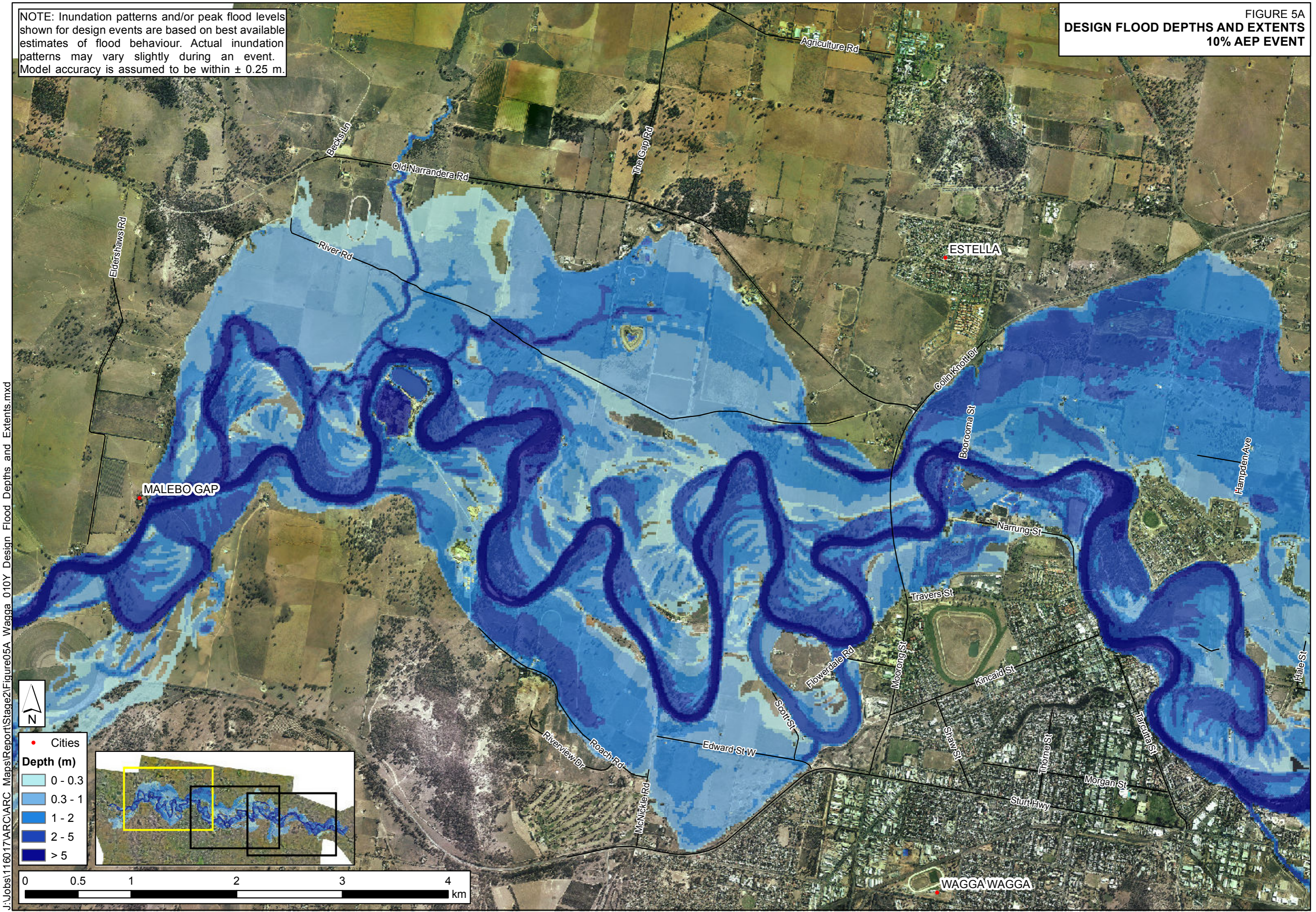


NOTE: Inundation patterns and/or peak flood levels shown for design events are based on best available estimates of flood behaviour. Actual inundation patterns may vary slightly during an event. Model accuracy is assumed to be within  $\pm 0.25$  m.

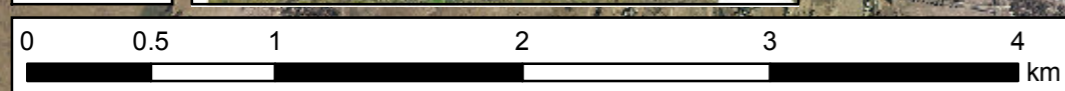
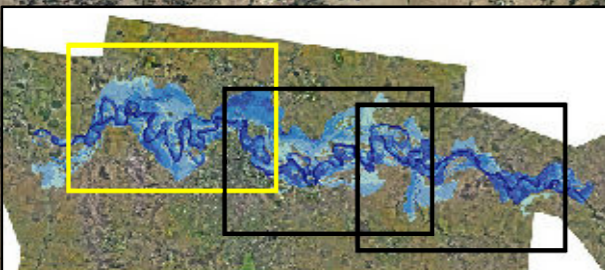
FIGURE 5A  
DESIGN FLOOD DEPTHS AND EXTENTS  
10% AEP EVENT



J:\Jobs\1160\17\ARC\ARC\_Maps\Report\Stage2\Figure05A\_Wagga\_010Y\_Design\_Flood\_Depths\_and\_Extents.mxd

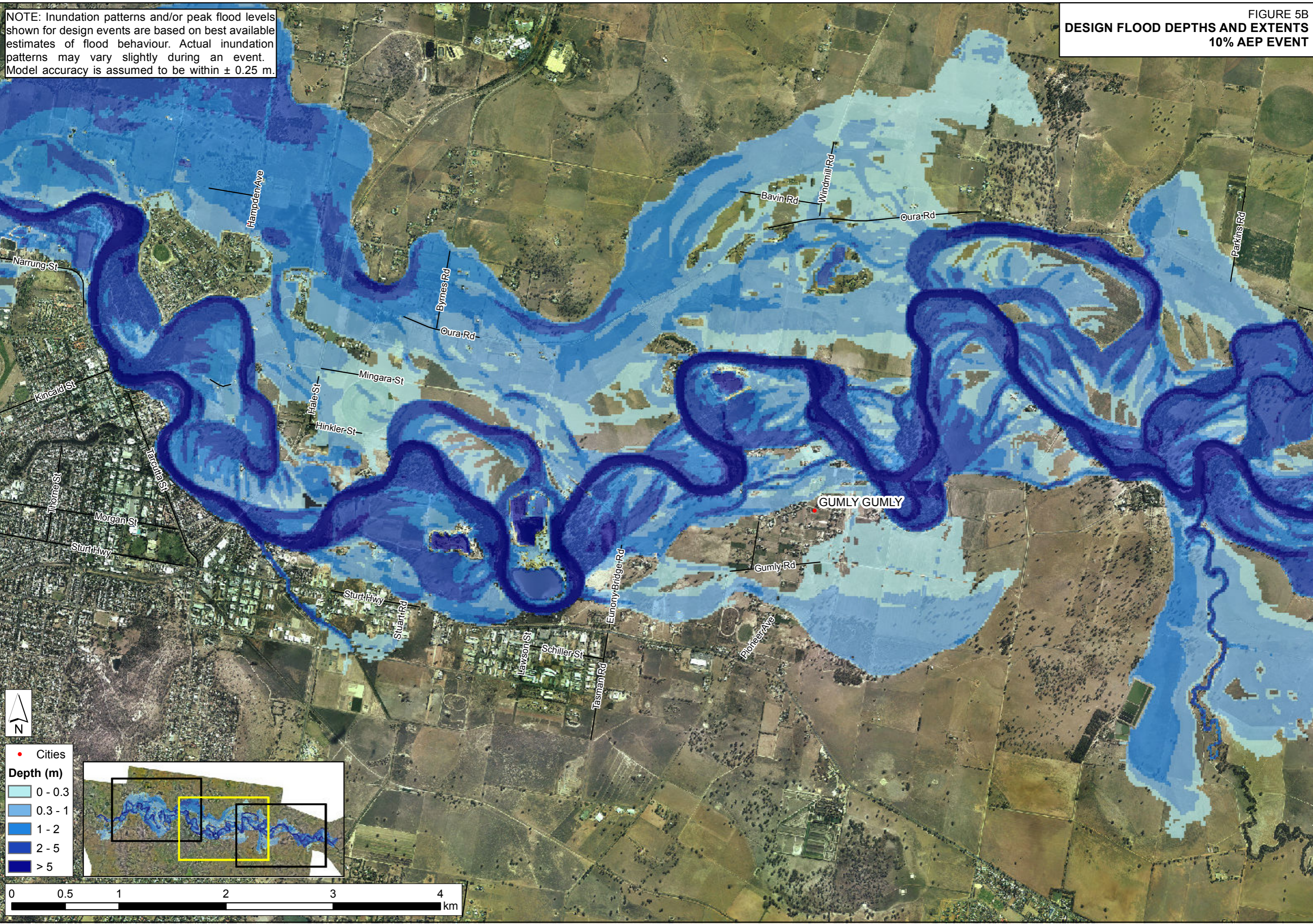


- Cities
- Depth (m)**
- 0 - 0.3
- 0.3 - 1
- 1 - 2
- 2 - 5
- > 5



NOTE: Inundation patterns and/or peak flood levels shown for design events are based on best available estimates of flood behaviour. Actual inundation patterns may vary slightly during an event. Model accuracy is assumed to be within ± 0.25 m.

J:\Jobs\1160\17\ARC Maps\Report\Stage2\Figure5B Wagga 010Y Design Flood Depths and Extents.mxd



- Cities
- Depth (m)**
- 0 - 0.3
- 0.3 - 1
- 1 - 2
- 2 - 5
- > 5

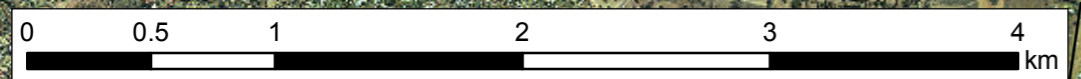
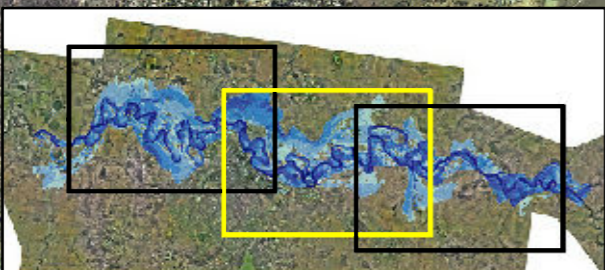
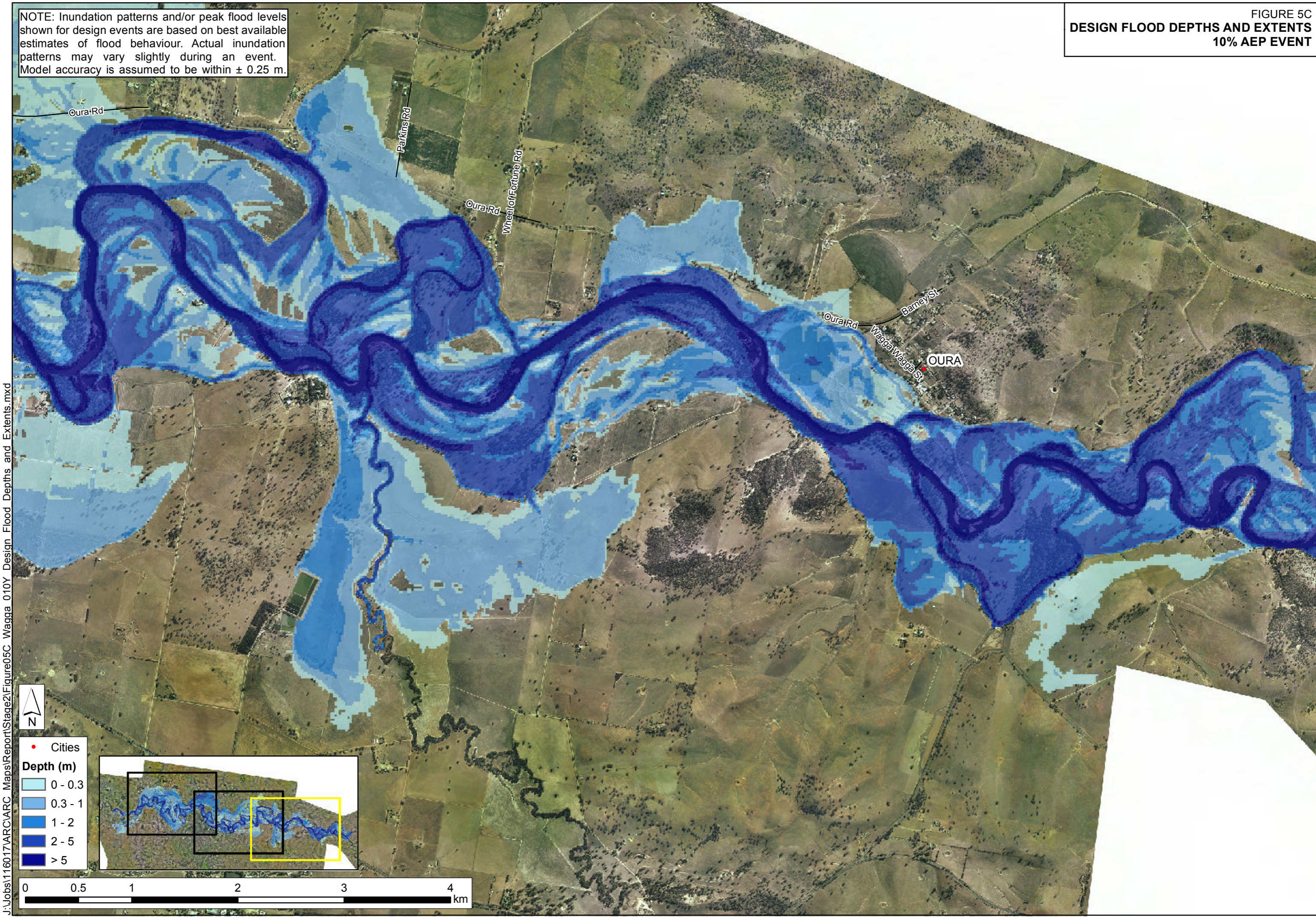


FIGURE 5C  
DESIGN FLOOD DEPTHS AND EXTENTS  
10% AEP EVENT

NOTE: Inundation patterns and/or peak flood levels shown for design events are based on best available estimates of flood behaviour. Actual inundation patterns may vary slightly during an event. Model accuracy is assumed to be within  $\pm 0.25$  m.



J:\Jobs\1160\17\ARC\ARC\_Maps\Report\Stage2\Figure5C\_Wagga\_010Y\_Design Flood Depths and Extents.mxd



- Cities
- Depth (m)**
- 0 - 0.3
- 0.3 - 1
- 1 - 2
- 2 - 5
- > 5

