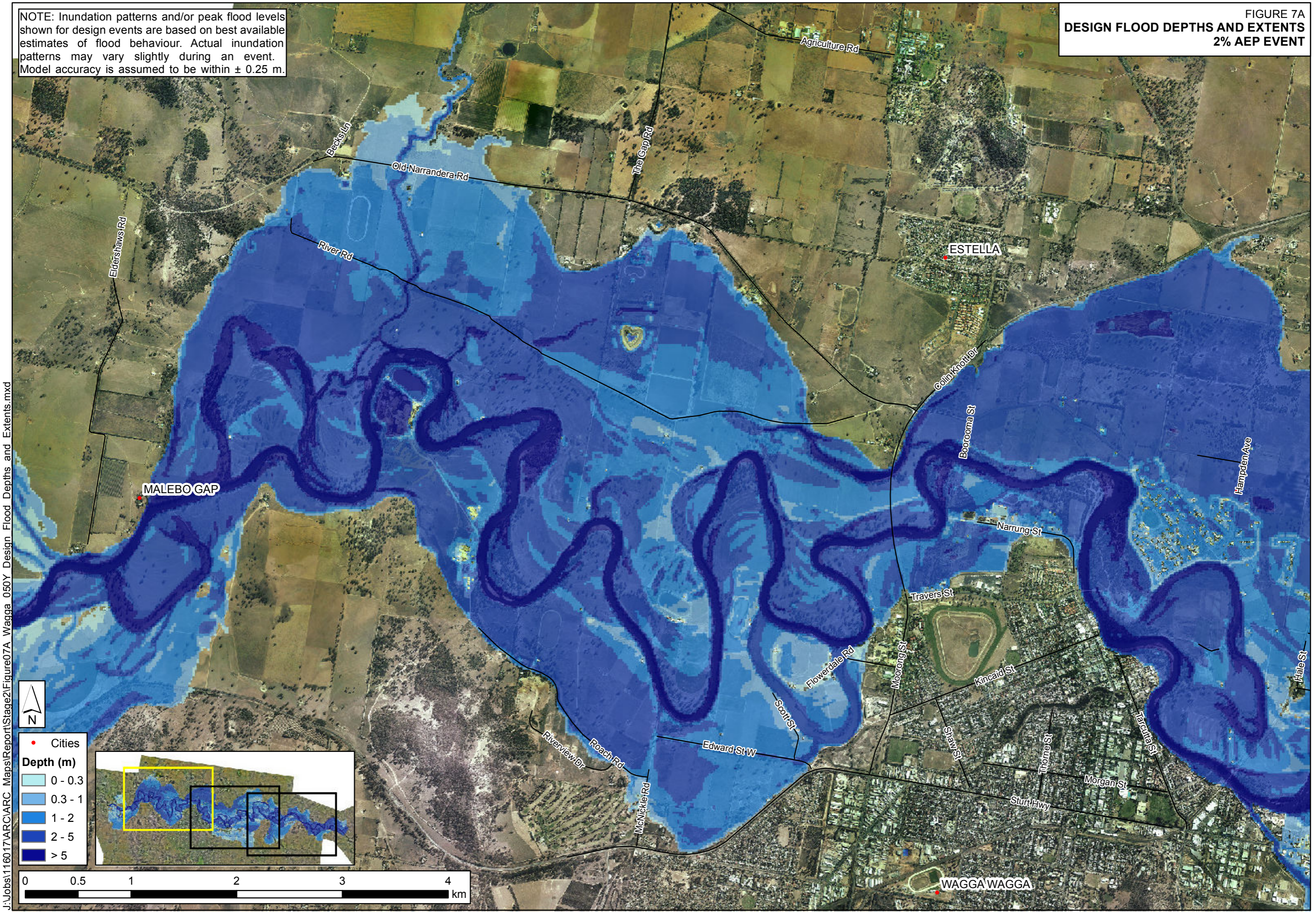


NOTE: Inundation patterns and/or peak flood levels shown for design events are based on best available estimates of flood behaviour. Actual inundation patterns may vary slightly during an event. Model accuracy is assumed to be within  $\pm 0.25$  m.

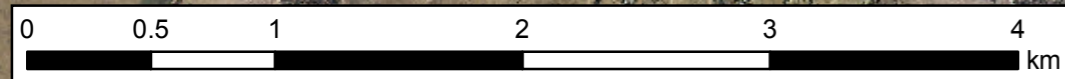
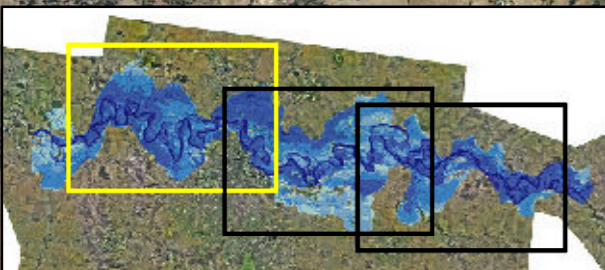
FIGURE 7A  
DESIGN FLOOD DEPTHS AND EXTENTS  
2% AEP EVENT



J:\Jobs\1160\17\ARC\ARC\_Maps\Report\Stage2\Figure07A\_Wagga\_050Y\_Design\_Flood\_Depths\_and\_Extents.mxd



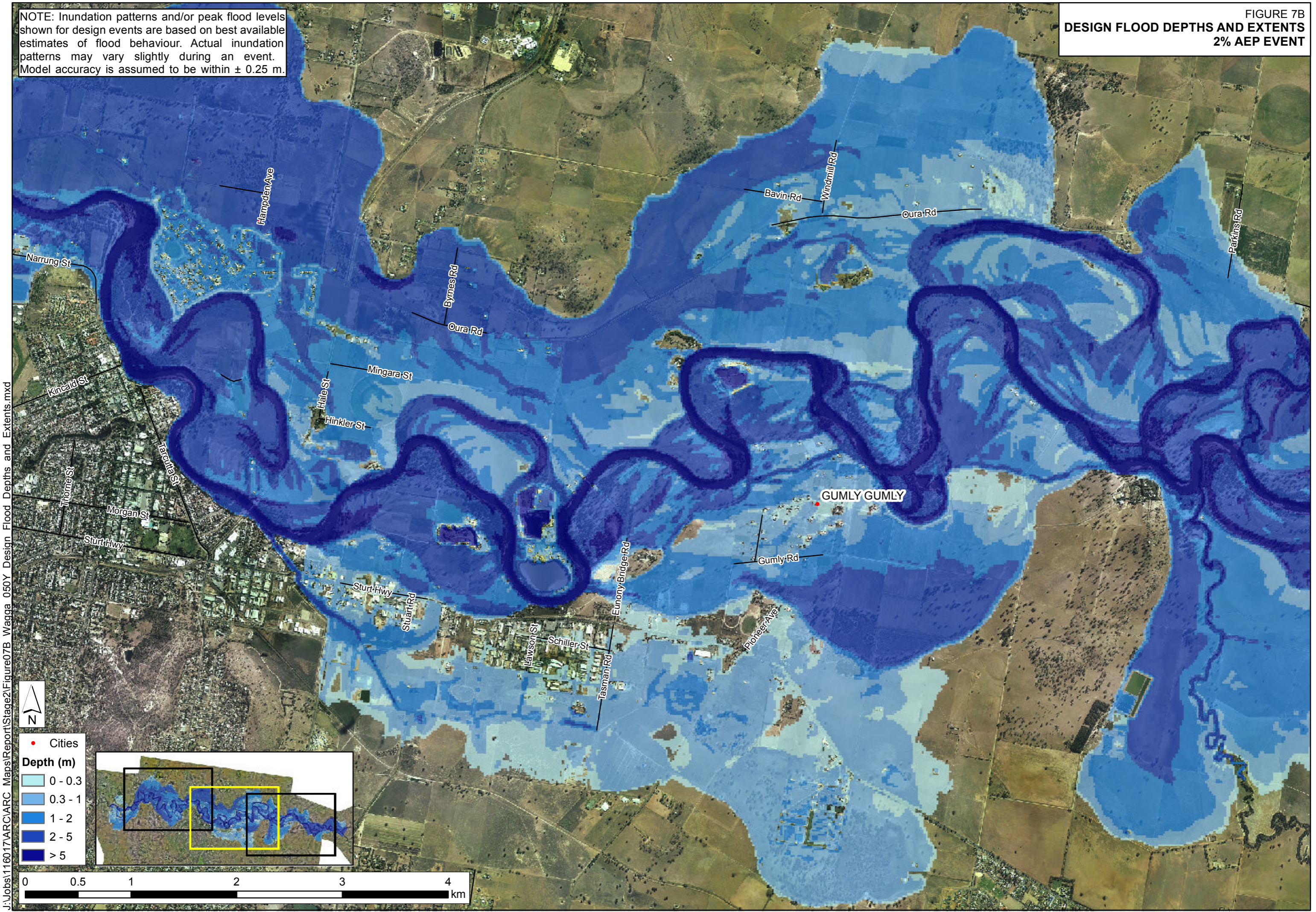
- Cities
- Depth (m)**
- 0 - 0.3
- 0.3 - 1
- 1 - 2
- 2 - 5
- > 5





NOTE: Inundation patterns and/or peak flood levels shown for design events are based on best available estimates of flood behaviour. Actual inundation patterns may vary slightly during an event. Model accuracy is assumed to be within  $\pm 0.25$  m.

FIGURE 7B  
DESIGN FLOOD DEPTHS AND EXTENTS  
2% AEP EVENT



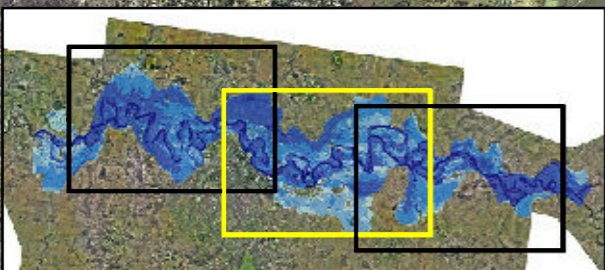
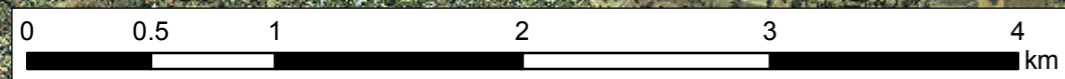
J:\Jobs\1160\17\ARC\Map\Report\Stage2\Figure7B Wagga 050Y Design Flood Depths and Extents.mxd



• Cities

Depth (m)

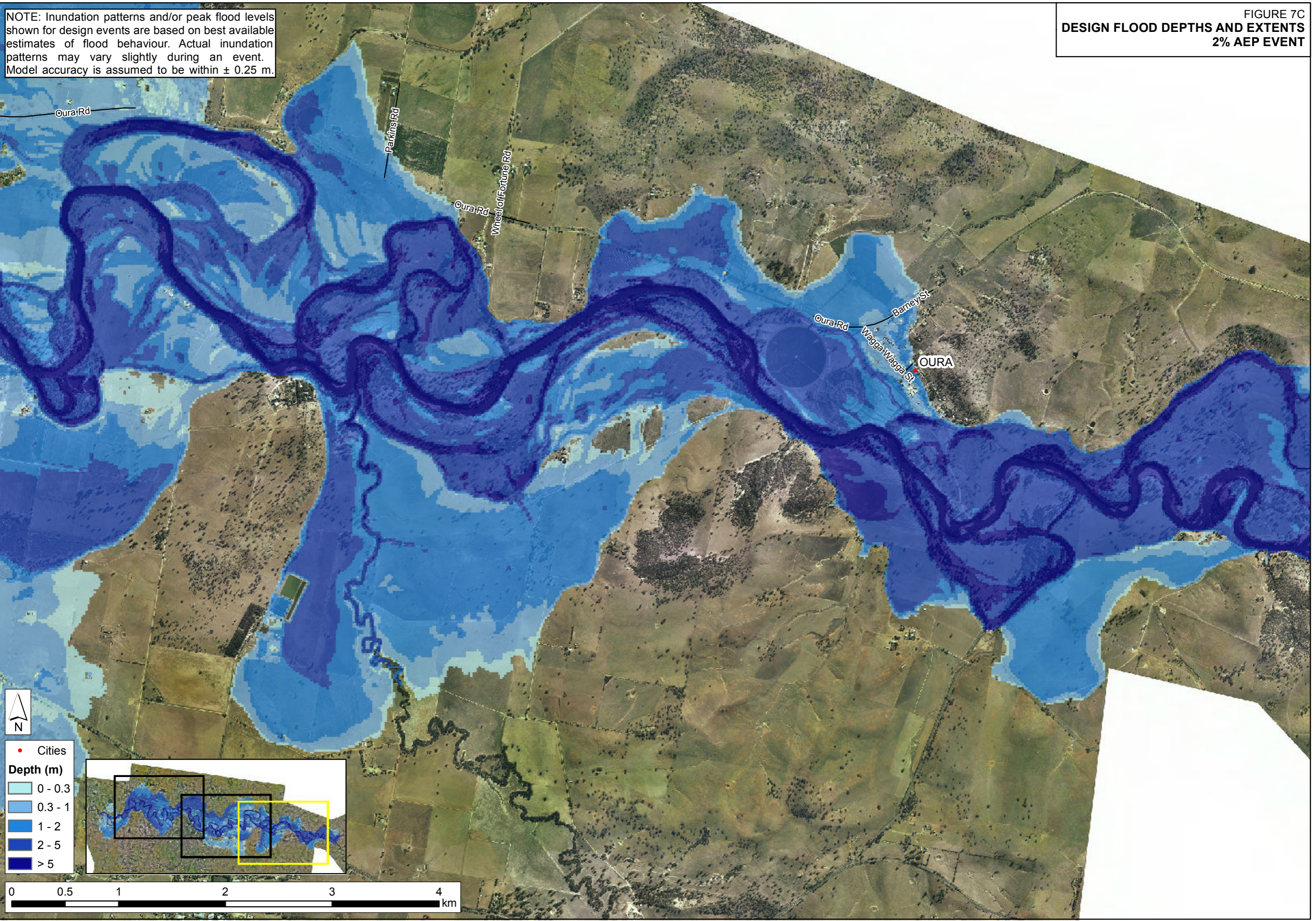
- 0 - 0.3
- 0.3 - 1
- 1 - 2
- 2 - 5
- > 5





NOTE: Inundation patterns and/or peak flood levels shown for design events are based on best available estimates of flood behaviour. Actual inundation patterns may vary slightly during an event. Model accuracy is assumed to be within  $\pm 0.25$  m.

FIGURE 7C  
DESIGN FLOOD DEPTHS AND EXTENTS  
2% AEP EVENT



J:\Jobs\1160\17\ARC\ARC\_Maps\Report\Stage2\Figure7C\_Wagga\_050Y\_Design Flood Depths and Extents.mxd