



Household Waste Guide

Well done Wagga Wagga!

The new waste service started in April 2018 with the introduction of the weekly Food Organics and Garden Organics (FOGO) service and fortnightly recycling and general waste service.

Residents have made a great effort in the move to this new service. Together we divert an average of 314,744 kg of food organic and garden organic material and 101,480 kg of recycling away from landfill each week!

To further build on this great success, Council and the community will undertake further work to continue this trend of increasing waste recovery and recycling rates. The following will be focus areas:

- ensuring plastic bags never go into the yellow lid bin, and only compostable liners go in the green lid bin
- ensuring all food and garden organic waste goes into the green lid bin

Keep track of our progress at wagga.nsw.gov.au/waste.

Did you know?

- In one year the trucks have emptied more than 2.8 million bins!
- The garbage truck fleet travel enough kilometres emptying bins in one year to nearly reach the moon!

Weekly



Green Lid



Kitchen Caddy

Fortnightly



Red Lid



Yellow Lid



Green lid bin

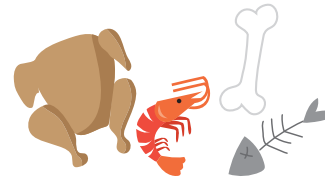
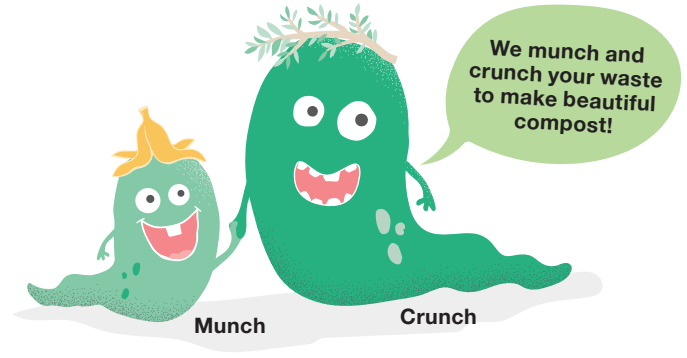
WEEKLY COLLECTION

Munch and Crunch work hand in hand to turn your food organics and garden organics into quality compost. They are professional composters and can process more than what can go in your home compost bin, including meat, dairy, bones and citrus.

- ✓ any food leftover from a meal
- ✓ meat
- ✓ fish
- ✓ chicken
- ✓ vegetables
- ✓ bread
- ✓ prawn shells
- ✓ egg shells
- ✓ dairy products
- ✓ coffee grounds
- ✓ tea bags
- ✓ flowers & herbs
- ✓ paper towel
- ✓ leaves
- ✓ small sticks
- ✓ weeds
- ✓ shredded paper

- ✗ No plastic bags
- ✗ No treated timber
- ✗ No biodegradable/degradable plastic bags
- ✗ No sharps or medical waste

A new roll of compostable liners will be delivered to households annually. If you run out before your new roll is delivered, residents can collect rolls from Customer Service at the Civic Centre, corner Baylis and Morrow streets.



Meat & bones



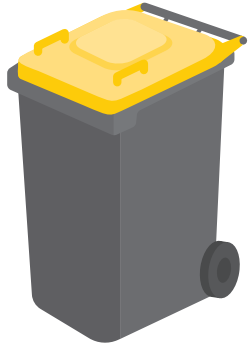
Paper towel, newspaper & shredded paper



Dairy, food scraps & coffee grounds



Garden trimmings, weeds & grass clippings



Yellow lid bin

FORTNIGHTLY COLLECTION

Trixie loves turning your household recycling into new items. Use your yellow lid bin for all recyclable items from the kitchen, bathroom, office and laundry. Be sure to check what you can recycle and buy recycled where you can!

Trixie's top tips:

- Place recycling loose in the yellow lid bin
- No plastic bags, wrap or cling film
- No hoses
- No clothing
- No bedding, pillows or curtains
- No sharps or medical waste
- Empty contents from containers and lightly rinse



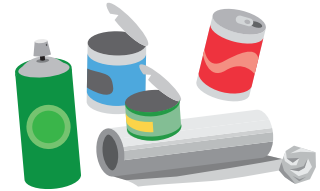
Trixie



Cartons



Glass



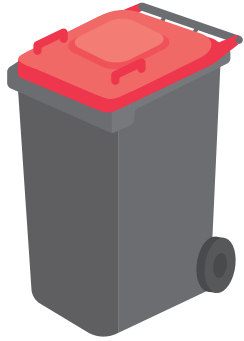
Cans, metal tins, aluminium cans/foil



Hard plastics



Paper & cardboard



Red lid bin

FORTNIGHTLY COLLECTION

General Waste is very strict. He will only take what cannot be composted or recycled. So be sure to stay on the right side of the General and sort your waste correctly.



Help me reduce my 'waste'-line by correctly sorting your rubbish!

Managing odours

- Store bins in the shade and out of direct sunlight if possible
- Make sure your bin lids close properly and have no cracks in the sides. If your bin is broken or cracked, contact Council to request a repair or replacement
- Consider using general odour neutralising products in your red lid bin, including clean cat litter products, crystals or bicarbonate of soda
- Use insect spray around bin lid if flies become a problem
- Rinse bins after collection with detergent if required

Managing nappies

- Flush nappy contents down the toilet before disposing
- Wrap the nappy into itself using the tabs
- Seal nappies tightly in plastic bags before placing in the red lid bin
- Place some odour neutralising products in the foot of a stocking and tie it to the bin lid handle allowing it to sit inside the bin
- Consider using modern cloth nappies

A-Z Waste Guide

Use our handy A-Z Waste Guide to help with sorting your household waste!

| Item | Bin or disposal site |
|--|-------------------------------------|
| Advertising material (paper and cardboard) | ● Yellow lid bin or ● green lid bin |
| Aerosol can (empty) | ● Yellow lid bin |
| Aluminium foil baking tray | ● Yellow lid bin |
| Aluminium can | ● Yellow lid bin |
| Aluminium foil (roll to tennis ball size) | ● Yellow lid bin |
| Aluminium frame (window) | ➔ Gregadoo Waste Management Centre |
| Aluminium squeeze tubes | ● Yellow lid bin |
| Animal waste | ● Red lid bin |
| Asbestos | ➔ Gregadoo Waste Management Centre |
| Ash - wood (must be cold) | ● Green lid bin |
| Automotive battery | ➔ Gregadoo Waste Management Centre |
| Baby food sachet (squeezy) | ● Red lid bin |
| Baby wipes | ● Red lid bin |
| Bags (plastic - biodegradable) | ● Red lid bin |
| Bags (plant based compostable) | ● Green lid bin |
| Bags (plastic - degradable) | ● Red lid bin |
| Bags (plastic) | ● Red lid bin |
| Baked goods | ● Green lid bin |
| Baking paper | ● Green lid bin |
| Bamboo cutlery/containers | ● Green lid bin |

| Item | Bin or disposal site |
|-----------------------------------|--|
| Band-Aids | ● Red lid bin |
| Batteries (automotive) | ➔ Gregadoo Waste Management Centre |
| Batteries (household) | ➔ Community Recycling Station / Battery World / Aldi |
| Beanbag beans | ● Red lid bin |
| Bedding | ● Red lid bin |
| Beer bottle | ● Yellow lid bin |
| Beer can (aluminium) | ● Yellow lid bin |
| Berry punnet | ● Yellow lid bin |
| Bike tyre including tube | ➔ Gregadoo Waste Management Centre |
| Biodegradable/degradable plastics | ● Red lid bin |
| Biscuit box (cardboard) | ● Yellow lid bin or ● green lid bin |
| Biscuits (sweet and savoury) | ● Green lid bin |
| Blister packs - medication | ● Red lid bin |
| Blue ray player | ➔ Gregadoo Waste Management Centre |
| Bones (meat - large) | ● Green lid bin |
| Bones (meat - small) | ● Green lid bin |
| Books (children's fabric books) | ● Red lid bin or donate to charity |
| Books (hard back or soft cover) | ● Yellow lid bin, Kurrajong Recycling or donate to charity |
| Books (plastic cover) | ● Red lid bin |
| Bottle (gas) | ➔ Gregadoo Waste Management Centre |
| Bottle (juice/softdrink/beer) | ● Yellow lid bin / Return and Earn |
| Bottle (plastic) | ● Yellow lid bin |
| Bottle (shampoo/conditioner) | ● Yellow lid bin |
| Bottles (glass) | ● Yellow lid bin |

| Item | Bin or disposal site |
|--|-------------------------------------|
| Bottle tops | ● Yellow lid bin |
| Boxes (cardboard) | ● Yellow lid bin or ● green lid bin |
| Boxes (washing powder) | ● Yellow lid bin or ● green lid bin |
| Boxes (cardboard - waxed) | ● Green lid bin |
| Branches (large) | ➔ Gregadoo Waste Management Centre |
| Branches (small - maximum 10cm diameter) | ● Green lid bin |
| Bread | ● Green lid bin |
| Bread bags (plastic) | ● Red lid bin |
| Bread tags | ● Yellow lid bin |
| Brochures (paper and cardboard) | ● Yellow lid bin or green lid bin |
| Bubble wrap (plastic) | ● Red lid bin |
| Bubble wrap lined envelopes | ● Red lid bin |
| Builders material | ➔ Gregadoo Waste Management Centre |
| Bulbs - plant | ● Green lid bin |
| Butchers paper | ● Yellow lid bin or ● green lid bin |
| Butter container (plastic) | ● Yellow lid bin |
| Cables/cords | ● Red lid bin |
| Cake | ● Green lid bin |
| Cake trays (plastic) | ● Yellow lid bin |
| Camp stove gas bottle | ➔ Gregadoo Waste Management Centre |
| Can (aerosol - empty) | ● Yellow lid bin |
| Can (aluminium) | ● Yellow lid bin |
| Can (hair spray - empty) | ● Yellow lid bin |
| Can (pet food) | ● Yellow lid bin |
| Can (steel) | ● Yellow lid bin |
| Can (tin) | ● Yellow lid bin |

| Item | Bin or disposal site |
|-------------------------------------|---|
| Candles | ● Red lid bin |
| Car battery | ➔ Gregadoo Waste Management Centre |
| Car parts | ➔ Gregadoo Waste Management Centre |
| Cardboard | ● Yellow lid bin or ● green lid bin |
| Cardboard roll | ● Yellow lid bin or ● green lid bin |
| Cardboard pizza box | ● Green lid bin |
| Cards | ● Yellow lid bin or ● green lid bin |
| Carpet | ● Red lid bin or Gregadoo Waste Management Centre |
| Cars | ➔ Gregadoo Waste Management Centre |
| Carton (juice) | ● Yellow lid bin |
| Cartons (egg - cardboard) | ● Yellow lid bin or ● green lid bin |
| Cartons (egg - polystyrene) | ● Red lid bin |
| Cartons (long-life) | ● Yellow lid bin |
| Cartons (milk) | ● Yellow lid bin |
| Cassette tapes | ● Red lid bin |
| Catalogues (paper and cardboard) | ● Yellow lid bin or ● green lid bin |
| CD case | ● Red lid bin |
| CD disk | ● Red lid bin |
| Cellophane | ● Red lid bin |
| Ceramics | ● Red lid bin |
| Cereal boxes (cardboard) | ● Yellow lid bin or ● green lid bin |
| Cereals | ● Green lid bin |
| Cheese | ● Green lid bin |
| Chemical drums | ➔ Point of sale or drumMUSTER |
| Chemicals (garden, pool, household) | ➔ Household Chemical Cleanout household |

| Item | Bin or disposal site |
|---------------------------------------|---|
| Chewing Gum | ● Red lid bin |
| Chicken | ● Green lid bin |
| Chicken wings | ● Green lid bin |
| Chicken bones | ● Green lid bin |
| Chips | ● Green lid bin |
| Chip packet | ● Red lid bin |
| Chocolate wrapper | ● Red lid bin |
| Christmas lights | ● Red lid bin |
| Christmas tree (trunk diameter <10cm) | ● Green lid bin |
| Christmas tree (trunk diameter >10cm) | ● Red lid bin or Gregadoo Waste Management Centre |
| Chopsticks (wooden) | ● Green lid bin |
| Cigarette butts | ● Red lid bin |
| Citrus fruit | ● Green lid bin |
| Cleaning product bottles (plastic) | ● Yellow lid bin |
| Cleaning rags | ● Red lid bin |
| Cling film | ● Red lid bin |
| Cling wrap | ● Red lid bin |
| Cloth reusable shopping bags | ● Red lid bin |
| Coat hangers (metal) | ● Red lid bin |
| Coat hangers (plastic) | ● Red lid bin |
| Computer | ➡ Kurrajong Recycling or Gregadoo Waste Management Centre |
| Computer monitor | ➡ Kurrajong Recycling or Gregadoo Waste Management Centre |
| Copper | ➡ Kurrajong Recycling or Gregadoo Waste Management Centre |

| Item | Bin or disposal site |
|--|---|
| Clothing (good condition) | ➡ Donate to charity |
| Clothing (poor condition) | ● Red lid bin |
| Coffee cups (single use) | ● Red lid bin |
| Coffee cup lids | ● Yellow lid bin |
| Coffee grounds | ● Green lid bin |
| Coffee pods | ● Red lid bin |
| Coir door mat | ● Green lid bin |
| Compact disc | ● Red lid bin |
| Compact disc case (no discs) | ● Red lid bin |
| Compostable bin liners (Council approved) | ● Green lid bin |
| Computers (preferred without batteries in if delivered to Kurrajong Recycling) | ➡ Gregadoo Waste Management Centre or Kurrajong Recycling |
| Conditioner bottle (plastic) | ● Yellow lid bin |
| Construction and demolition materials | ➡ Gregadoo Waste Management Centre |
| Cooking oil (absorb in paper towel or newspaper) | ● Green lid bin |
| Cooking oil (larger quantities) | ➡ Gregadoo Waste Management Centre |
| Corks | ● Green lid bin |
| Cosmetic jars (empty/rinsed) | ● Yellow lid bin |
| Crackers (biscuits) | ● Green lid bin |
| Crackers (Christmas) | ● Yellow lid bin |
| Crockery (broken) | ● Red lid bin |
| Curtains | ● Red lid bin |
| Cushions | ● Red lid bin |
| Cutlery (compostable) | ● Green lid bin |
| Cutlery (metal) | ➡ Donate to charity |
| Cutlery (plastic) | ● Red lid bin |

| Item | Bin or disposal site |
|---|---|
| Dairy | ● Green lid bin |
| Deli meat | ● Green lid bin |
| Deli paper | ● Green lid bin |
| Deodorant (aerosol - empty) | ● Yellow lid bin |
| Deodorant (roll on) | ● Red lid bin |
| Deodorant (stick) | ● Red lid bin |
| Detergent bottle | ● Yellow lid bin |
| Dirt (bin weight restrictions) | ● Red lid bin |
| Dog poo | ● Red lid bin |
| Door mat (coir) | ● Green lid bin |
| Drinking glasses | ● Red lid bin |
| Drop sheet (plastic) | ● Red lid bin |
| Drums (automotive oil) | ➔ Gregadoo Waste Management Centre |
| Drums (chemical) | ➔ Point of sale or drumMUSTER |
| DVD case | ● Red lid bin |
| DVD disc | ● Red lid bin |
| DVD player | ➔ Gregadoo Waste Management Centre |
| Egg carton (cardboard) | ● Yellow lid bin or ● green lid bin |
| Egg carton (foam) | ● Red lid bin |
| Eggs | ● Green lid bin |
| Egg shells | ● Green lid bin |
| Electrical appliances (microwave) | ➔ Gregadoo Waste Management Centre |
| Electrical appliances | ➔ Gregadoo Waste Management Centre |
| Electronic waste (TVs, computers and peripherals - screen, box, mouse, keyboard, printer) | ➔ Gregadoo Waste Management Centre or Kurrajong Recycling |

| Item | Bin or disposal site |
|--|--|
| Envelopes (bubble wrap) | ● Red lid bin |
| Envelopes (incl. with windows) | ● Yellow lid bin |
| Expanded polystyrene | ➔ Gregadoo Waste Management Centre |
| Fabric | ● Red lid bin or donate to charity |
| Fats (absorb in paper towel or newspaper) | ● Green lid bin |
| Feathers | ● Green lid bin |
| Feminine hygiene products | ● Red lid bin |
| Fire extinguisher | ➔ Gregadoo Waste Management Centre |
| Fish and Chip paper | ● Green lid bin |
| Fish bones | ● Green lid bin |
| Flowers | ● Green lid bin |
| Fluorescent tube | ➔ Household Chemical CleanOut |
| Fly spray can (empty) | ● Yellow lid bin |
| Fly trap | ● Red lid bin (please wrap in two plastic bags) |
| Foam cups | ● Red lid bin |
| Foil (aluminium - roll to tennis ball size) | ● Yellow lid bin |
| Food cans | ● Yellow lid bin |
| Food waste and scraps (includes takeaway, leftovers, spoiled food, raw & cooked) | ● Green lid bin |
| Formula tins | ● Yellow lid bin |
| Freezer | ➔ Gregadoo Waste Management Centre |
| Fridge | ➔ Gregadoo Waste Management Centre |
| Frozen foods (remove plastic packaging) | ● Green lid bin |

| Item | Bin or disposal site |
|--|---|
| Frozen vegetable bag | ● Red lid bin |
| Fruits boxes - juice | ● Yellow lid bin |
| Fruit fly infested fruit (tie up in compostable liner) | ● Green lid bin |
| Fruit | ● Green lid bin |
| Furniture | ➔ Gregadoo Waste Management Centre, Tip Shop, Hardwaste pickup or donate to charity |
| Frying pan | ● Red lid bin or Gregadoo Waste Management |
| Fur | ● Green lid bin |
| Garden pruinings | ● Green lid bin |
| Garden hose | ● Red lid bin |
| Gas bottle | ➔ Gregadoo Waste Management Centre |
| Glass (broken) | ● Red lid bin |
| Glass (drinking) | ● Red lid bin |
| Glass (mirror) | ➔ Gregadoo Waste Management Centre |
| Glass (pyrex) | ● Red lid bin |
| Glass (window) | ➔ Gregadoo Waste Management Centre |
| Glass (windscreen) | ➔ Gregadoo Waste Management Centre |
| Glass bottles | ● Yellow lid bin |
| Glass jars | ● Yellow lid bin |
| Glasses (reading) | ● Red lid bin or Recycle for Sight |
| Globe (fluorescent tube) | ➔ Household Chemical CleanOut |
| Globe (light) | ➔ Community Recycling Station |
| Glossy paper | ● Yellow lid bin or ● green lid bin |
| Grains | ● Green lid bin |
| Grass clippings | ● Green lid bin |

| Item | Bin or disposal site |
|--|---|
| Greaseproof paper | ● Green lid bin |
| Hair (pet or human) | ● Green lid bin |
| Hairspray can (empty) | ● Yellow lid bin |
| Hoses | ● Red lid bin |
| Household battery | ➔ Community Recycling Station |
| Household cleaning containers (rinsed/empty) | ● Yellow lid bin |
| Household rubbish | ● Red lid bin |
| Household wipes | ● Red lid bin |
| Ice cream container | ● Yellow lid bin |
| Ice cream wrapper | ● Red lid bin |
| Ink cartridges | ➔ Community Recycling Station |
| iPad | ➔ Kurrajong Recycling |
| Iron (scrap) | ➔ Gregadoo Waste Management Centre |
| Jars (glass) | ● Yellow lid bin |
| Juice bottle | ● Yellow lid bin |
| Juice carton | ● Yellow lid bin |
| Junk mail (remove plastic wrapping) | ● Yellow lid bin |
| Kettle | ➔ Gregadoo Waste Management Centre |
| Kitty litter | ● Red lid bin |
| Laminated paper | ● Red lid bin |
| Laptop | ➔ Kurrajong Recycling or Gregadoo Waste Management Centre |
| Lawn clippings | ● Green lid bin |
| Lead | ➔ Gregadoo Waste Management Centre |
| Leaves | ● Green lid bin |
| Letters | ● Yellow or ● green lid bin |

| Item | Bin or disposal site |
|--|-------------------------------------|
| Lever arch folders (cardboard and metal) | ● Red lid bin |
| Lever arch folders (plastic) | ● Red lid bin |
| Light globes | ➔ Community Recycling Station |
| Lobster shells | ● Green lid bin |
| Lolly bag / wrapper | ● Red lid bin |
| Long-life cartons | ● Yellow lid bin |
| Magazines | ● Yellow lid bin or ● green lid bin |
| Make up bottles | ● Red lid bin |
| Make up jars | ● Red lid bin |
| Margarine container | ● Yellow lid bin |
| Mattress | ➔ Gregadoo Waste Management Centre |
| Meat | ● Green lid bin |
| Meat tray (plastic) | ● Yellow lid bin |
| Meat tray (styrene) | ● Red lid bin |
| Medicine (expired) | ➔ Return Unwanted Medicine |
| Medicine bottle (glass) | ● Red lid bin |
| Medicine bottle (plastic) | ● Red lid bin |
| Medicines | ➔ Return Unwanted Medicine |
| Microwave oven | ➔ Gregadoo Waste Management Centre |
| Milk bottle (glass) | ● Yellow lid bin |
| Milk bottle (plastic) | ● Yellow lid bin |
| Milk carton | ● Yellow lid bin |
| Milk crates | ➔ Kurrajong Recyclers |
| Mirror | ➔ Gregadoo Waste Management Centre |
| Mobile phones | ➔ Community Recycling Station |
| Motor oil | ➔ Gregadoo Waste Management Centre |

| Item | Bin or disposal site |
|--|--|
| Nappies (baby and adult incontinence pads) | ● Red lid bin |
| Newspaper | ● Yellow lid bin or ● green lid bin |
| Newspaper (shredded) | ● Green lid bin |
| Nuts | ● Green lid bin |
| Office paper | ● Yellow lid bin or ● green lid bin |
| Oil (motor) | ➔ Gregadoo Waste Management Centre |
| Onion | ● Green lid bin |
| Oven | ➔ Gregadoo Waste Management Centre |
| Ovenware (pots, pans, pyrex) | ● Red lid bin or donate to charity |
| Oyster shell | ● Green lid bin |
| Paints | ➔ Gregadoo Waste Management Centre |
| Pallet (plastic) | ➔ Gregadoo Waste Management Centre |
| Pallet (wooden) | ➔ Gregadoo Waste Management Centre |
| Paper | ● Yellow lid bin or ● green lid bin |
| Paper (baking and greaseproof) | ● Green lid bin |
| Paper (glossy) | ● Yellow lid bin or ● green lid bin |
| Paper napkins | ● Green lid bin |
| Paper (shredded) | ● Green lid bin or Kurrajong Recycling |
| Paper (waxed) | ● Green lid bin |
| Paper bags | ● Yellow lid bin or ● green lid bin |
| Paper plates | ● Green lid bin |
| Paper towel | ● Green lid bin |
| Paper towel rolls (cardboard) | ● Yellow lid bin or ● green lid bin |
| Pasta | ● Green lid bin |

| Item | Bin or disposal site |
|----------------------------------|--|
| Pastries | ● Green lid bin |
| Pens/pencils/crayons/textas | ● Red lid bin |
| Pet food can | ● Yellow lid bin |
| Pet food sachets | ● Red lid bin |
| Perspex | ● Red lid bin |
| Phone books | ● Yellow lid bin or ● green lid bin |
| Photocopier | ➔ Kurrajong Recycling |
| Pillows | ● Red lid bin |
| Pizza box | ● Green lid bin |
| Plants | ● Green lid bin |
| Plant pots (small - plastic) | ● Yellow lid bin |
| Plant pots (large - plastic) | ● Red lid bin |
| Plant pots (terracotta) | ● Red lid bin |
| Plastic bags | ● Red lid bin |
| Plastic buckets | ● Red lid bin |
| Plastic chair | ➔ Gregadoo Waste Management Centre |
| Plastic cutlery | ● Red lid bin |
| Plastic reusable shopping bags | ● Red lid bin |
| Plastic storage containers/ tubs | ➔ Kurrajong Recycling (Needing the recycling symbol on the item with either 1 2 5) |
| Plastic strapping | ● Red lid bin |
| Plastic toy | ● Red lid bin |
| Plastic tubes | ● Red lid bin |
| Plastic washing baskets | ● Red lid bin |
| Plastic webbing (chairs) | ● Red lid bin |
| Plates (ceramic) | ● Red lid bin |
| Plates (coated paper) | ● Red lid bin |
| Plates (paper) | ● Yellow lid bin or ● green lid bin |

| Item | Bin or disposal site |
|----------------------------------|--|
| Plates (plastic) | ● Yellow lid bin |
| Polystyrene (expanded) | ➔ Gregadoo Waste Management Centre |
| Poppers - juice | ● Yellow lid bin |
| Popsicle stick (wooden) | ● Green lid bin |
| Postcards | ● Yellow lid bin or ● green lid bin |
| Poultry (raw and cooked) | ● Green lid bin |
| Power tools | ➔ Gregadoo Waste Management Centre |
| Prawns | ● Green lid bin |
| Printer | ➔ Kurrajong Recycling |
| Printer cartridges | ➔ Community Recycling Station / Office Works / Cartridge World |
| Prunings (maximum 10cm diameter) | ● Green lid bin |
| Punnet (berry) | ● Yellow lid bin |
| Punnet (tomato) | ● Yellow lid bin |
| Puree pouch | ● Red lid bin |
| Pyrex glass | ● Red lid bin |
| Reading glasses | ● Red lid bin or Recycle for Sight |
| Rice | ● Green lid bin |
| Ring binders | ● Red lid bin |
| Rope | ● Red lid bin |
| Salads and dressings | ● Green lid bin |
| Sanitary pads | ● Red lid bin |
| Saucepan | ● Red lid bin or donate to charity |
| Scrap iron | ➔ Gregadoo Waste Management Centre |
| Scraps - food | ● Green lid bin |
| Seafood | ● Green lid bin |
| Seafood shells | ● Green lid bin |

| Item | Bin or disposal site |
|----------------------------------|---|
| Seed bags (woven plastic) | ● Red lid bin |
| Seeds | ● Green lid bin |
| Serviettes | ● Green lid bin |
| Shampoo bottle (plastic) | ● Yellow lid bin |
| Shoes | ● Red lid bin |
| Shopping bags (plastic) | ● Red lid bin |
| Shredded paper | ● Green lid bin or Kurrajong Recycling |
| Shrink wrap | ● Red lid bin |
| Silo bags (plastic) | ● Red lid bin |
| Skewers (wooden) | ● Green lid bin |
| Smoke detector | ● Red lid bin (small quantities), recycle batteries through Community Recycling Station |
| Soap pump bottle (remove spring) | ● Yellow lid bin |
| Soft drink bottle | ● Yellow lid bin |
| Soft plastics | ● Red lid bin |
| Soil (bin weight restrictions) | ● Red lid bin or Gregadoo Waste Management Centre |
| Spray paint can (empty) | ● Yellow lid bin |
| Squeezy puree pouch | ● Red lid bin |
| Squeezy yoghurt | ● Red lid bin |
| Straws (paper) | ● Green lid bin |
| Straws (plastic) | ● Red lid bin |
| Steel | ➔ Gregadoo Waste Management Centre |
| Steel can | ● Yellow lid bin |
| Stockings | ● Red lid bin |
| Straws (metal) | ● Red lid bin |
| Stumps (maximum 10cm diameter) | ● Green lid bin |

| Item | Bin or disposal site |
|-------------------------------------|---|
| Syringes | ➔ Safe Sharps drop off point |
| Takeaway containers (plastic) | ● Yellow lid bin |
| Tea bags | ● Green lid bin |
| Tea leaves | ● Green lid bin |
| Television | ➔ Kurrajong Recycling or Gregadoo Waste Management Centre |
| Textiles | ● Red lid bin or donate to charity |
| Timber off cuts <10cm | ● Green lid bin |
| Timber off cuts >10cm | ● Red lid bin or Gregadoo Waste Management Centre |
| Tin (Formula) | ● Yellow lid bin |
| Tin can | ● Yellow lid bin |
| Tin foil (roll to tennis ball size) | ● Yellow lid bin |
| Tissue box | ● Yellow lid bin |
| Tissues (used or unused) | ● Green lid bin |
| Toaster | ➔ Gregadoo Waste Management Centre |
| Toilet paper rolls | ● Yellow lid bin or ● green lid bin |
| Tomato punnet | ● Yellow lid bin |
| Toothbrush | ● Red lid bin |
| Toothbrush - electric | ● Red lid bin |
| Toothpaste tube | ● Red lid bin |
| Toys (plastic) | ● Red lid bin, Tip Shop or donate to charity |
| Toys (wooden) | ● Red lid bin, Tip Shop or donate to charity |
| Trampoline mat webbing | ● Red lid bin |
| Tray (metal baking or cake) | ● Red lid bin |
| Tray (biscuit - plastic) | ● Yellow lid bin |
| Tree roots (maximum 10cm diameter) | ● Green lid bin |

| Item | Bin or disposal site |
|--|-------------------------------------|
| Tree stumps (maximum 10cm diameter) | ● Green lid bin |
| Tuppaware container | ● Red lid bin |
| Tubs (butter) | ● Yellow lid bin |
| Tubs (margarine) | ● Yellow lid bin |
| Tyres (bike, car) | ➔ Gregadoo Waste Management Centre |
| Umbrella | ● Red lid bin |
| Vacuum cleaner | ➔ Gregadoo Waste Management Centre |
| Vacuum cleaner dust (dirt, dust, pet hair) | ● Green lid bin |
| Vegetables | ● Green lid bin |
| Vegetable punnet | ● Yellow lid bin |
| Vegetable scraps | ● Green lid bin |
| VHS tape | ● Red lid bin |
| Video player | ➔ Gregadoo Waste Management Centre |
| Vitamin bottle | ● Red lid bin |
| Washing basket (cane) | ● Red lid bin |
| Washing basket (plastic) | ● Red lid bin |
| Washing liquid container (rinsed/empty) | ● Yellow lid bin |
| Washing machine | ➔ Gregadoo Waste Management Centre |
| Washing powder boxes | ● Yellow lid bin or ● green lid bin |
| Waxed paper | ● Green lid bin |
| Weeds | ● Green lid bin |
| White goods | ➔ Gregadoo Waste Management Centre |
| Window glass | ➔ Gregadoo Waste Management Centre |

| Item | Bin or disposal site |
|------------------------|--|
| Windscreen glass | ➔ Gregadoo Waste Management Centre |
| Wine bottles | ● Yellow lid bin |
| Wire | ➔ Gregadoo Waste Management Centre |
| Wooden chopsticks | ● Green lid bin |
| Wooden popsicle stick | ● Green lid bin |
| Wooden skewers | ● Green lid bin |
| Wrapping paper | ● Yellow lid bin |
| Wrapper (chocolate) | ● Red lid bin |
| Wrapper (lolly) | ● Red lid bin |
| X-ray | ● Red lid bin or search Recycling Near You |
| Yoghurt (no container) | ● Green lid bin |
| Yoghurt container | ● Yellow lid bin |
| Yoghurt pouch | ● Red lid bin |



Your frequently asked questions

Q. What are the opening hours for the Gregadoo Tip?

A. The Gregadoo Waste Management Centre is open 7 days a week, 7am - 4.30pm.

Q. I have run out of the green compostable liners. Where can I get some more?

A. Wagga residents who get a waste service will receive a delivery of liners once a year. If you run out and need more, you can attend our Customer Service counter and get a roll for no extra charge.

Q. The supermarket sells biodegradable and recyclable bin liners. Can I put these in the FOGO bin?

A. No. Only compostable liners can go in the FOGO bin. All soft plastics go in the General Waste bin.

Q. I often run out of room in my red lid bin. What can I do about this?

A. Many items can be separated into the three-bin system. Use our A-Z guide on our website to help sort your waste. If you still run out of room, you can upsize your general waste bin to a 240L or get an additional bin, for a fee.

Q. I keep finding rubbish that has been illegally dumped. How do I report this?

A. You can report dumped rubbish through RIDonline: ridonline.epa.nsw.gov.au. You have the option to upload pictures and can stay anonymous.

Q. What do I do if my bin was missed?

A. If your bin was missed by the garbage truck, you can ring our Customer Service team who can organise the truck to return. Bins that were missed because they were not out on time will incur a fee to have the truck return. All bins must be placed on the kerb by 6am the day of collection.

Q. What do I do if my bin is damaged or stolen?

A. If you have a bin that needs to be repaired or replaced you can ring our Customer Service team who will organise this for you at no cost.

Q. What hours is the Tip Shop open?

A. The Tip Shop is open Saturday, Sunday and Monday, 8am - 4pm.

Q. Where can I find out how much it will cost to bring my waste out to Gregadoo Waste Management Centre?

A. Visit the Council website at wagga.nsw.gov.au/wastefees to see all waste disposal costs.

Q. How can I find out what waste goes into which bin?

A. Visit wagga.nsw.gov.au/waste where you will find the A-Z guide on what goes where. If your item is not there, call our waste education officer on 1300 292 442.



Book your free annual hard waste collection!

The hard waste collection helps residents dispose of larger household items that are too big for the regular kerbside service.

Properties that pay the domestic waste management service charge can access one free hard waste collection per calendar year to dispose of up to two cubic metres of hard waste.

Want to find out what items can be disposed of or make a booking?

Visit: wagga.nsw.gov.au/waste

Call: (02) 5942 6150, Mon to Fri, 8.30am – 5pm



Asbestos Disposal Scheme

Wagga Wagga residents can register to dispose of asbestos from their property for a cheaper rate, provided certain conditions are met. All asbestos is to be handled, wrapped and transported in accordance with SafeWork Asbestos Code of Practice.

How to participate: Come to Council and register at the Wagga Wagga City Council customer service desk. Note – only the household owner can register for this scheme. Once registered, and works completed, asbestos can be transported to Gregadoo Waste Management Facility with 24 hours notice.

There are two options for how you can dispose of bonded asbestos.

1: Do it yourself; pre-purchase a do-it-yourself kit for \$100.

You can remove up to 10m² (150kgs).

2: Engage a contractor to remove up to 5 tonnes of bonded asbestos; registration costs \$100.



Community Recycling Station

Recycle special wastes for free at our Community Recycling Stations at the Civic Centre and Tip Shop, which accept household quantities of:

- Ink cartridges
- Household batteries
- Globes
- Mobile phones and accessories

Recycle larger special waste items at the Gregadoo Waste Management Centre, which accepts household quantities of:

- Gas bottles and fire extinguishers
- Paint
- Electronic waste i.e. computers and TVs
- Car batteries, motor and other oils

Civic Centre hours: Saturday: 10am – 4pm
Mon - Fri: 8.30am – 6pm Sunday: 10am – 2pm



Recycle Mate

Recycle Mate helps you recycle anywhere in Australia – whether at home, at a friend's house or when on holiday. Just take a photo or type the name of an item you would like to know more about and Recycle Mate will give you disposal advice specific to your location.

For more information please visit recyclemate.com.au



Return & Earn

Consumers can exchange an eligible container at an approved collection point to receive a 10 cent refund per container. Containers should be empty, uncrushed, unbroken and with the original label attached. Eligible containers include most glass, cans, plastic and paperboard drink containers between 150 millilitres and three litres – those most often found in the litter stream.

Location of collection points:

- 293 Lake Albert Rd – Woolworths carpark
- 30 Gurwood St – Woolworths carpark
- 90-92 Hammond Ave – St Vincent de Paul Society carpark

For more information please visit returnandearn.org.au

Gregadoo Waste Management Centre and Rural Transfer Stations

| Facility | Opening hours |
|--|--|
| Gregadoo Waste Management Centre, 132 Ashfords Road, Gregadoo | 7 days, 7am – 4.30pm |
| Collingullie Rural Transfer Station, Lockhart Road | Wednesday: 1pm – 4.45pm Sunday: 8am – 11.45am |
| Currawarna Rural Transfer Station Kerfoot Road, between Old Narrandera Road and Ganmurra Road | Saturday: 1pm – 4pm |
| Galore Rural Transfer Station, Hall Road | Saturday: 8.30am – 11.30am |
| Humula Rural Transfer Station, Eight Mile Road | Sunday: 9am – Noon |
| Mangoplah Rural Transfer Station, 211 Holbrook Road | Sunday: 9am – Noon |
| Tarcutta Rural Transfer Station, Spring Street | Monday: 1pm – 4pm Saturday: 1pm to 4pm |
| Uranquinty Rural Transfer Station, 180 Connorton Street | Wednesday: 8am – 11.45am Sunday: 1pm – 4.45pm |

Gregadoo Waste Management Centre and Rural Transfer Stations are closed Christmas Day, Boxing Day, New Year's Day, Good Friday, Easter Sunday and Anzac Day.



Gregadoo Waste Management Centre (GWMC)

Did you know that the following items can be disposed of for free at the Gregadoo Waste Management Centre?

- Bottles and cans
- Car batteries
- Cardboard
- Computer e-waste
- Gas bottles (household quantities only)
- Motor oil (up to 20 litres)
- Paint (maximum of 100 litres in containers up to 20 litres)
- Polystyrene
- Televisions

Tip Shop

The Tip Shop is a great spot to grab a bargain on pre-loved goods. You can also drop off items still in good condition rather than sending them to landfill. This helps the environment through waste recovery, saves you in tip fees, and benefits the new owner!

The Tip Shop is open Saturday, Sunday and Monday, 8am - 4pm.

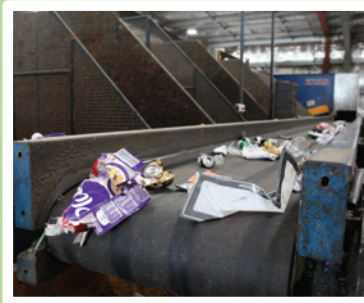
Item drop off for free is limited to Tip Shop opening hours.

Where does your waste go?

Sending your waste here and here...



Your food and garden organic waste gets composted at Carrathool.



Your recycling gets sorted in Wagga Wagga and sent for recycling.

... reduces what we send here.



Your general waste is buried in the ground here in Wagga Wagga.