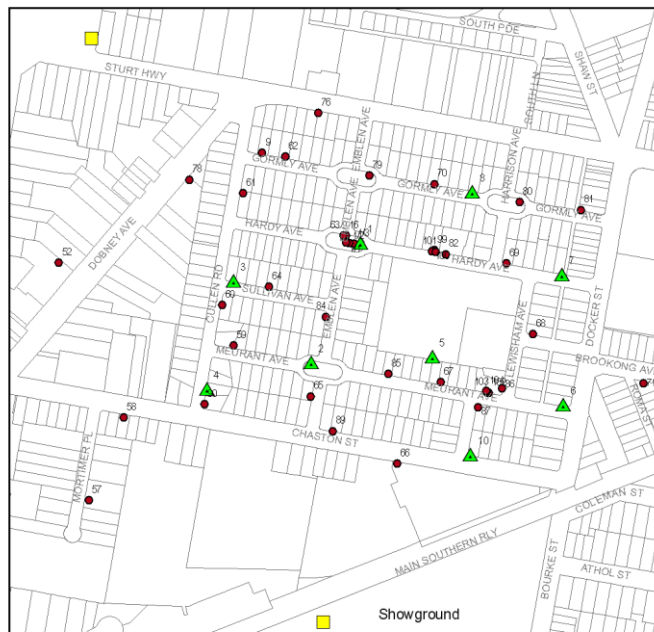





2022/23

Wagga Wagga Urban Salinity Technical Report 2022/2023



Intensive Borefield

Legend

-  Pump Stations
-  Dewatering Bores
-  Piezometers
- Road Names
- Cadastrate

0 100 200 300Meters



Prepared by the Community Sector of
Wagga Wagga City Council

TABLE OF CONTENTS

1. INTRODUCTION	3
1.1 Annual Changes in Overall Standing Water Levels	3
2. RAINFALL AND EVAPORATION.....	5
3. MONITORING PROGRAM.....	6
4. RESULTS	8
4.1 Standing Water Levels	8
4.2 Groundwater Contour Mapping.....	15
4.3 Critical Piezometers	17
4.4 Dewatering Bores.....	18
5. DISCLAIMER	19
6. REFERENCES	19

1. INTRODUCTION

The Wagga Wagga Urban Salinity Technical Report 2022/23 is a summary of data collected from Councils' urban salinity piezometer network and dewatering bores. The report is a move away from the annual Urban Salinity Status Report format which contains a more holistic reporting approach to impact, attributing factors, monitoring networks and management plans regarding urban salinity in the Wagga Wagga LGA.

The Urban Salinity Technical Report contains results from the groundwater monitoring network for that reporting period, being published annually.

1.1 Annual Changes in Overall Standing Water Levels

For a broader interpretation of groundwater conditions, comparing annual groundwater conditions on a local scale can be done by presenting overall SWL results as a percentage of total piezometers measured. Changes in groundwater conditions (ie, SWL increase, decrease, stable and dry) are revealed when compared to previous years' data.

Figure 1 shows annual changes (as a percentage) in SWL for all piezometers in the Wagga Wagga LGA for annual reporting periods between 2005/06 – 2022/23. For example, of the one hundred and ninety-four piezometers measured during the 2022/23 reporting period, 55% showed an increase in SWL when compared to the previous years' readings, 8% decreased in SWL, 33% remained dry and 4% remained stable. This allows for overall trending of groundwater conditions for the region based on all piezometers recorded.

It can be seen that from 2006/07 to 2010/11 there was a quite steep rise in SWL increase (from 13 - 67% of all piezometers respectively), coinciding with a decline in both SWL decrease (33 - 7%) and piezometers in a dry state (37 - 26%). Following this period, from 2010/11 to 2014/15, there was a steep declining trend in SWL increase (from 67 – 13%), coinciding with an inverse increase in SWL decrease (from 7 – 50%).

The current reporting period (2022/23) sees a trend of increasing SWL continue year upon year for the past 4 years of reporting (13%, 43%, 50%, 55%) and inversely SWL decreasing have declined in the same period (45%, 15%, 9%, 8%). 'Stable' and 'dry' piezometer conditions remained relatively constant from these previous reporting period.

Standing Water Level (SWL) Changes in the Wagga Wagga LGA Piezometers 2006 - 2023 (%)

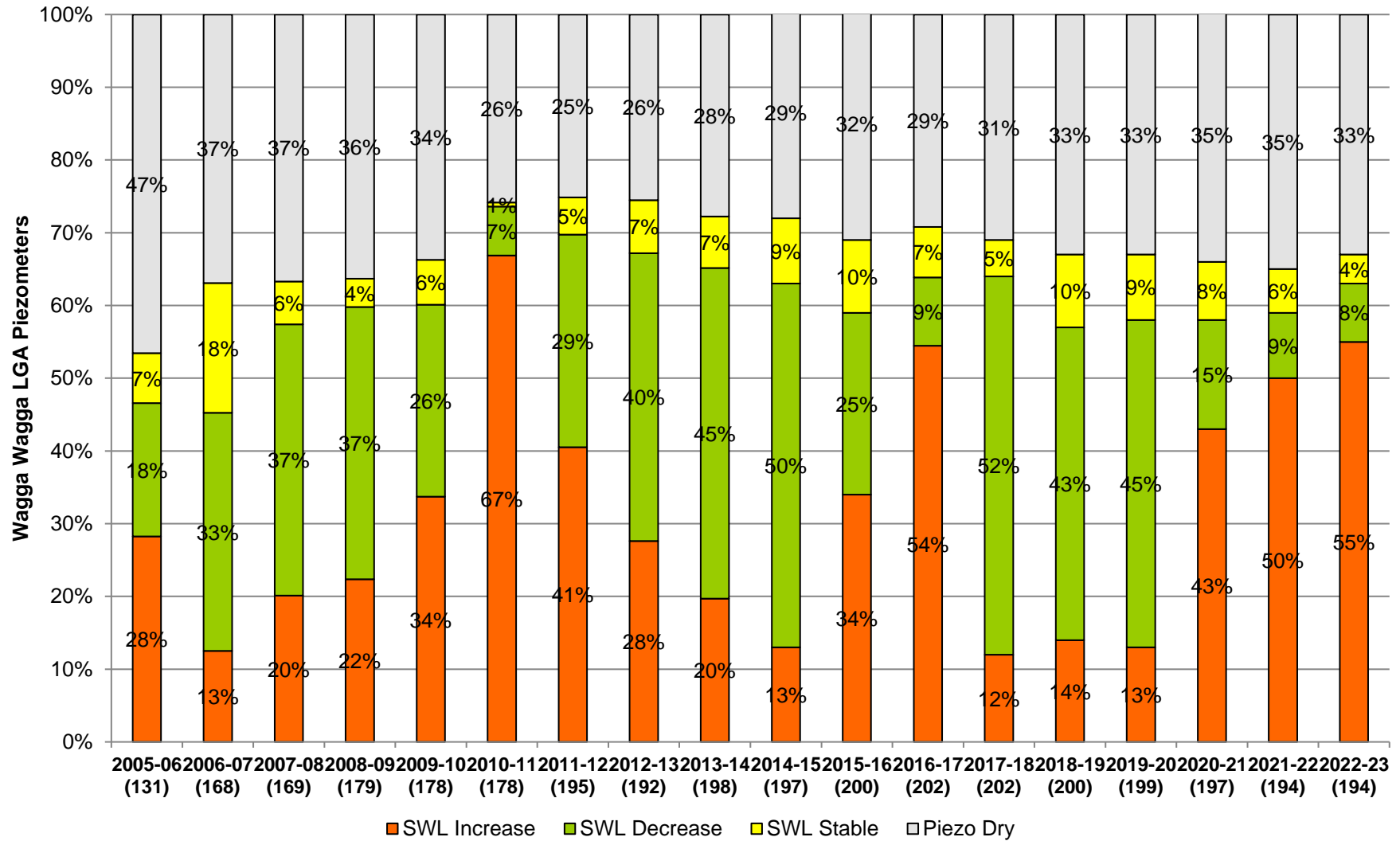


Figure 1: Graph depicting annual change in overall piezometer readings as a percentage of all piezometers in the Wagga Wagga LGA.

2. RAINFALL

Groundwater recharge is significantly affected by the amount of rainfall relative to evaporation. Low rainfall combined with high evaporation rates are expected to result in a fall in the water table. This occurs as insufficient water is available to saturate the upper soil profile and infiltration into the groundwater system is prevented. Alternatively, high rainfall will saturate the soil profile allowing for infiltration to groundwater. This infiltration is increased in areas where clearing of deep rooted vegetation has occurred.

The Bureau of Meteorology field station at Gurwood St, Wagga Wagga recorded historical average and annual monthly rainfall during the period from July 2022 to June 2023 (Figure 2).

The 2022/23 reporting period in Wagga Wagga recorded 820mm of rainfall, an increase of 9mm compared to 2021/22 total of 811mm. This figure represents a 43% increase on historical average rainfall (575mm). Monthly rainfall averages exceeded historical monthly rainfall figures on eight occasions during 2022/23, with major rainfall events occurring in October 2022, November 2022, January 2023 and March 2023.

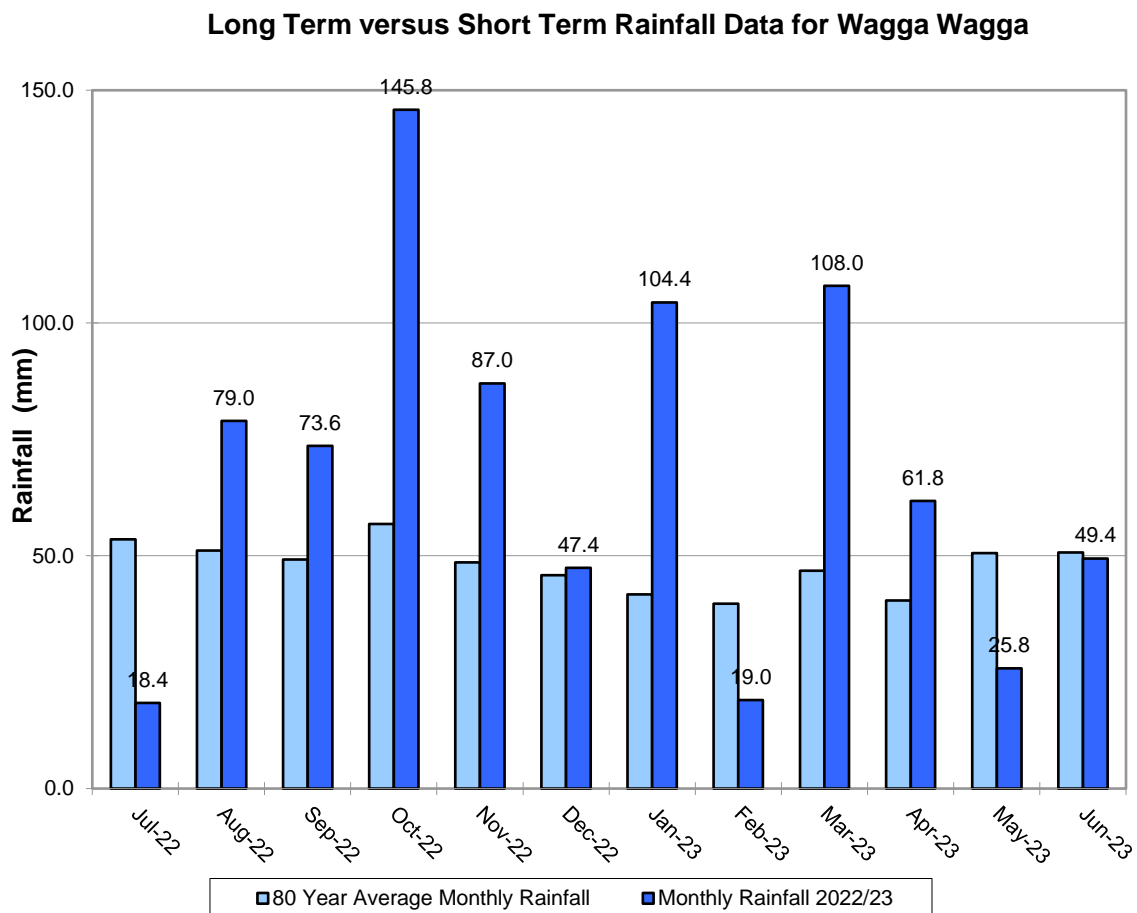


Figure 2: Monthly rainfall and evaporation graph for Wagga Wagga 2022/23.

3. MONITORING PROGRAM

Piezometers located throughout the Wagga Wagga Local Government Area are maintained by Wagga Wagga City Council to monitor urban salinity. Established in 1998, the current monitoring network consists of approx. 200 active piezometers (Figure 4). The piezometers were monitored on a monthly, bi-monthly or quarterly basis to examine trends, identify causes of the problem and potential risks areas.

Standing water level (SWL) and electrical conductivity (EC) readings are collected and used to monitor urban salinity. The SWL is measured in metres below the ground surface to the nearest centimetre using a water level meter. Measurements are taken from the height of the piezometer casing and the height of the extension subtracted from the reading. Piezometers at ground level do not require a subtraction. Water is extracted from the piezometer using a bailer to measure for EC. The EC is measured in decisiemens per metre (dS/m) to two decimal places using a handheld conductivity meter (Figure 3).



Figure 3: Measuring standing water level (left) and electrical conductivity (right) of groundwater.

Results of groundwater monitoring identify areas susceptible to saline discharge and monitor the effectiveness of Council's preventative and remedial measures.

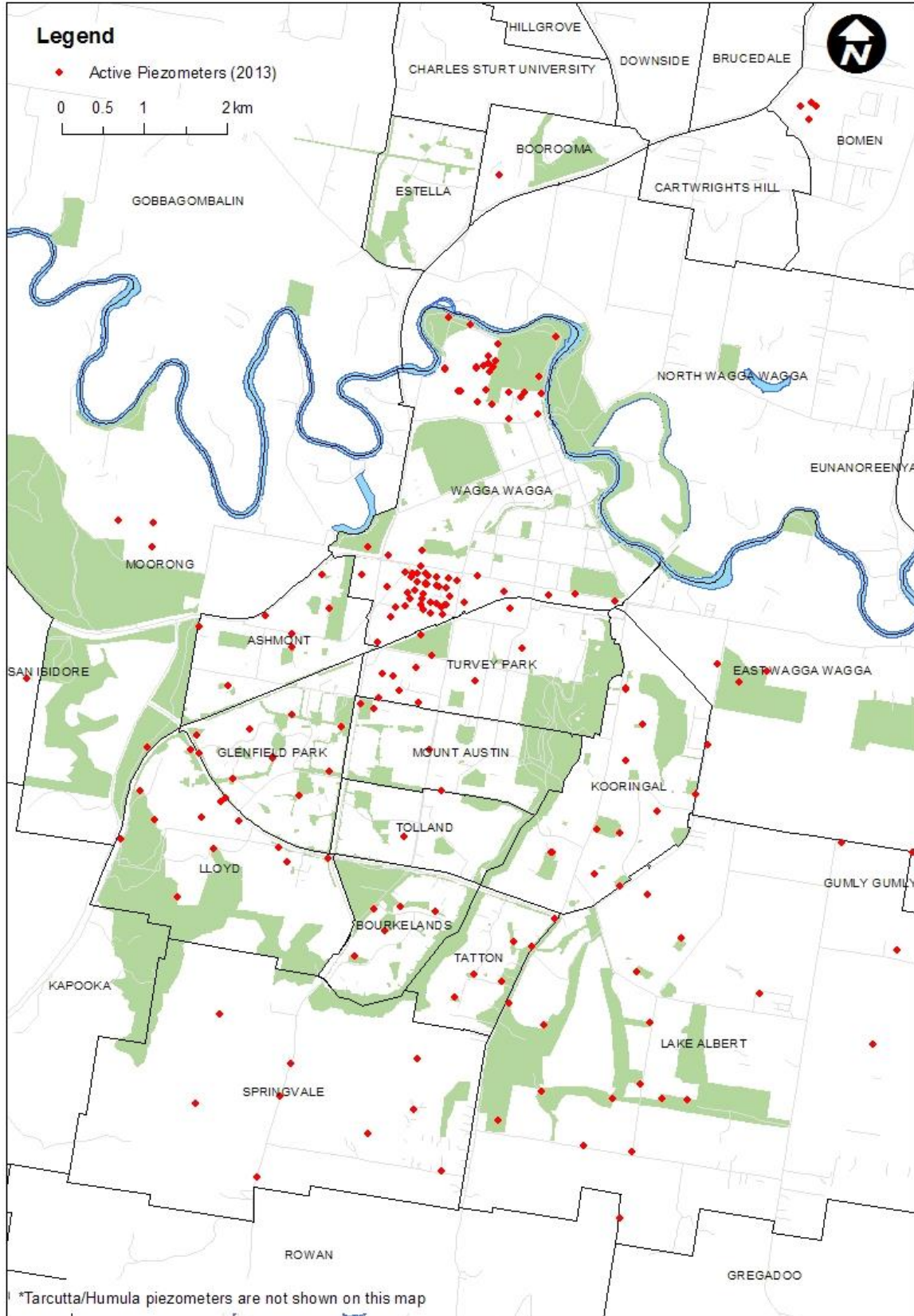


Figure 4: Location map of Wagga Wagga City Council's piezometer monitoring network

4. **RESULTS**

4.1 **Standing Water Levels**

The results discussed in this report relate to the change in the depth to the water table (standing water level) for all piezometers in the Wagga Wagga Local Government Area from July 2022 to June 2023 in relation to the results from the previous reporting period (July 2021 – June 2022).

To allow for meaningful interpretation of the data piezometers are grouped into eleven categories. Nine categories are based on the major sub-catchments identified by Golder (2007). Two additional groups (Undefined and Tarcutta/Humula) have been added to accommodate for piezometers outside the area recognised in the Golder (2007) study.

The eleven piezometer categories are:

- 1. Mid Murrumbidgee Alluvium (MA).** Thirty four piezometers are located in the Mid Murrumbidgee Alluvium piezometers 1, 62, 72-76, 79-81, 105-116, 118, 120-127, 144-146, 164-166, 171, 177, 210 and 211 (old Bore 9). These piezometers are associated with the Narrung Street Sewage Treatment Plant, the disused Wiradjuri Landfill and the northern section of the Calvary hospital precinct.
- 2. North Western Sub-catchment (1).** Three piezometers 189-191 are located in the newly developed rural residential estate known as Riverview.
- 3. Far Western Sub-catchment (2).** Ten piezometers are located in the Far Western Sub-catchment piezometers 18, 41, 54-55, 143, 174-175 and 199-202. The Far Western Sub-catchment piezometers incorporate areas of the suburbs of Ashmont, Glenfield and four recently drilled piezometers in Lloyd West
- 4. Western Sub-catchment (3).** Forty one piezometers are located in the Western Sub-catchment piezometers 2-3, 6-7, 9-15, 17, 34, 37-38, 40, 42-44, 47, 56-57, 128, 142, 147, 152, 172-173, 178-179, 185-188, 197-198 and 203-209. These piezometers are located in the suburbs of Ashmont, Turvey Park, Mt Austin, Lloyd, Glenfield, Tolland, central Wagga Wagga, Bourkelands and seven recently drilled piezometers in Lloyd West.
- 5. CBD Sub-catchment (4).** Forty one piezometers are located in the CBD Sub-catchment piezometers 5, 16, 19-21, 39, 58-61, 63-69, 70-71, 78, 80, 82-90, 99-104, 176, 196, 1/1, 1/2 and 1/3. These piezometers are located in the Calvary hospital precinct and central Wagga Wagga.

- 6. Eastern CBD Sub-catchment (5).** Three piezometers are located in the Eastern CBD Sub-catchment piezometers 91-92 and 195 are situated in the suburb of Koorungal.
- 7. Far Eastern CBD Sub-catchment (6).** Three piezometers are located in the Far eastern CBD Sub-catchment piezometer 50 and 192-193. These piezometers are found in east Wagga.
- 8. Eastern Sub-catchment (7).** Forty six piezometers are located in the Eastern Sub-catchment piezometers 23-31, 36, 45, 48-49, 51, 53, 93-98, 129-140, 153-163, 170 and 180-184. The Eastern Sub-catchment is the largest catchment and incorporates the suburbs of Koorungal, Lake Albert, Glenoak and Springvale.
- 9. Far Eastern Sub-catchment (8).** Three piezometers are located in the Far eastern Sub-catchment piezometers 167-169 situated in the suburb of Lake Albert.
- 10. Undefined (O).** Seven piezometers are grouped within the undefined category as they fall outside the major Sub-catchments defined by Golder (2007). Piezometers 22, 32, 33, 148-151 are located at San Isidore, Forest Hill, Boorooma and Bomen.
- 11. Tarcutta/Humula (T/H)** contains the seven piezometers installed in the villages of Tarcutta and Humula (piezometers T1-T6, H1-H2).

Names given to the major sub-catchments by Golder (2007) Mid Murrumbidgee Alluvium, CBD sub-catchment, Western sub-catchment and Eastern sub-catchment formed the basis of names for the piezometers categories.

The change in standing water level for all piezometers is presented in Table 1. The Table illustrates the number of individual piezometers recorded in each piezometer category per group during 2022/23. A discussion of each group can be found in subsequent sections of this report.

Table 1: Changes in standing water levels across piezometer categories 2022/23

Change in SWL Category	MA	1	2	3	4	5	6	7	8	T/H	O	Total in Category
SWL Increase	23	3	5	30	11	2	0	24	2	7	0	107
SWL Decrease	2	0	0	0	13	0	0	0	0	0	0	15
SWL Stable	0	0	3	0	1	0	0	0	0	0	4	8
Piezometer Dry	11	0	2	11	14	1	2	18	1	1	3	64
Total Piezometers	36	3	10	41	39	3	2	42	3	8	7	194

The change in SWL for each piezometer category during 2022/23 is presented in Figure 5.

The dataset shows that the greatest number of piezometers, one-hundred-and-seven (55%), have increased in standing water level (SWL) when comparing SWL change between 2021/22 and 2022/23. Fifteen (8%) recorded a decrease in SWL with sixty-four (33%) piezometers remaining dry, during the reporting period. Eight (4%) piezometers remained stable (those with an increase/decrease of 5cm or less), similar to the previous reporting period.

Piezometers that contained water in the previous year that are now dry have been included in the 'SWL decreased' category, whereas piezometers that started as dry but now contain groundwater have been included in the 'SWL increased' category. These results were omitted from average increase/decrease calculations. Graphs of individual piezometers containing groundwater have been placed in Appendix D.

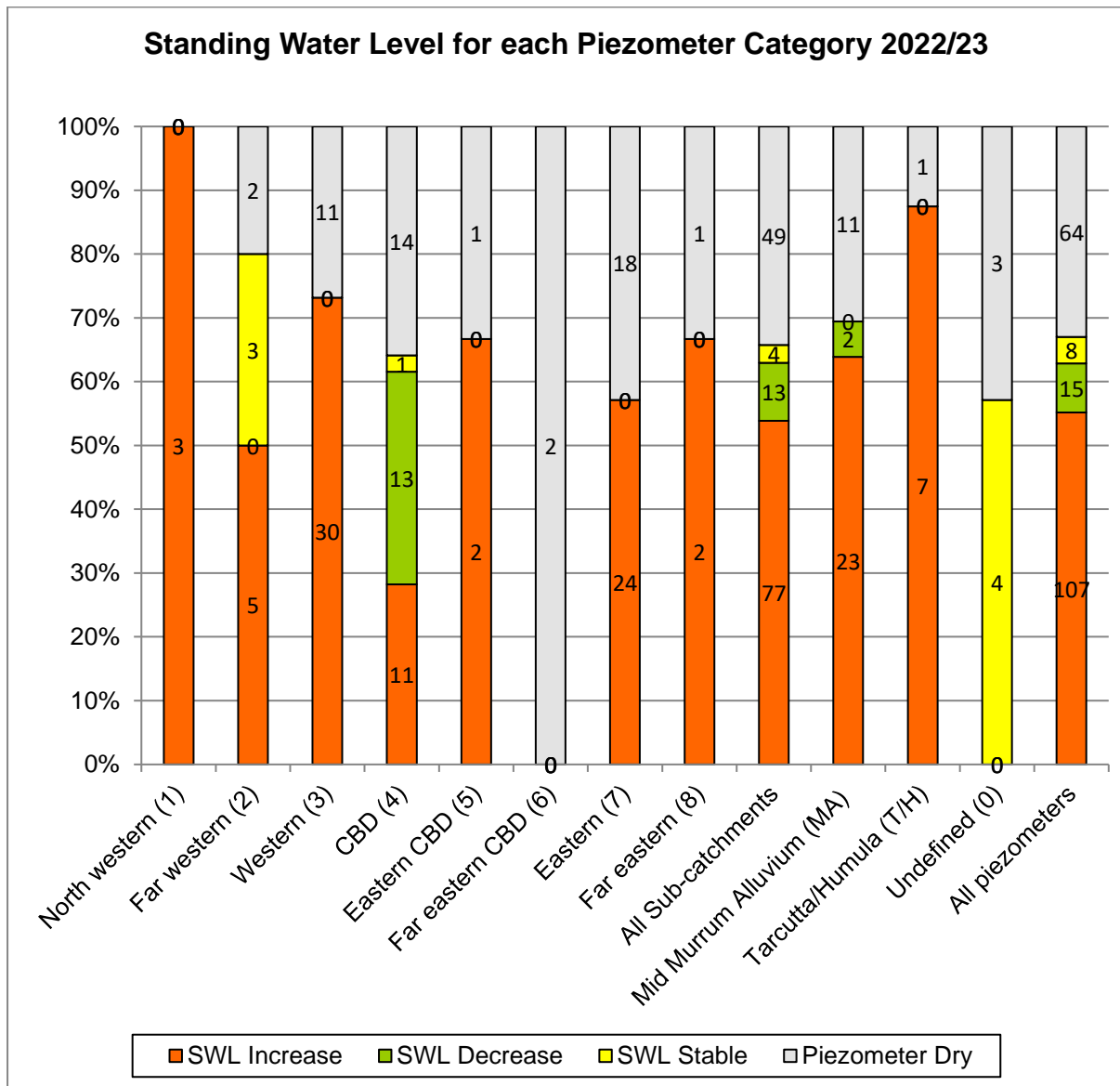


Figure 5: Chart depicting change in Standing Water Levels for each piezometer category

Mid Murrumbidgee Alluvium

The Mid Murrumbidgee Alluvium is the fourth largest piezometer category and contains 36 individual piezometers. Twenty-one of the piezometers located in the Mid Murrumbidgee Alluvium increased in SWL for the reporting period. Fourteen piezometers remained dry, with only one experiencing a decrease in SWL.

Mid Murrumbidgee Alluvium (MA)			
Increased	23	2	Decreased
Average	2.60	0.49	Average
Maximum	4.34	0.73	Maximum
Minimum	0.06	0.25	Minimum

Piezometers increasing in SWL recorded an average increase of 2.60m. The piezometer with the highest increase in SWL (4.34m) is piezometer no. 126 located at Billagha St, Wiradjuri. Most likely indicating major variations in river heights during the reporting period. Decreasing piezometers decreased by an average of 0.49m. The piezometer with the highest decrease in SWL (0.73m) is piezometer no. 109 located at Narrung St STW, Wiradjuri. Again, most likely indicating major variations in river heights during the reporting period

North Western Sub-catchment

Three piezometers are located within the Riverview estate. All piezometers increased at an average of 1.39m in SWL.

North Western Sub Catchment (1)			
Increased	3	0	Decreased
Average	1.39	-	Average
Maximum	2.73	-	Maximum
Minimum	0.19	-	Minimum

Far Western Sub-catchment

Ten piezometers are located in the Far Western Sub-catchment. Of these piezometers, five increased in SWL with none decreasing throughout the reporting period.

Far Western Sub catchment (2)			
Increased	5	0	Decreased
Average	0.68	-	Average
Maximum	1.03	-	Maximum
Minimum	0.25	-	Minimum

Western Sub-catchment

Of the forty-one piezometers measured within the Western Sub-catchment, thirty increased in SWL, with eleven dry for the 2022/23 reporting period, and zero decreasing in SWL.

Western Sub-Catchment (3)			
Increased	30	0	Decreased
Average	1.15	-	Average
Maximum	4.85	-	Maximum
Minimum	0.06	-	Minimum

Average SWL for increasing piezometers within the Western Sub-catchment were 1.15m, ranging from 4.85m to 0.06m. The highest SWL increase was piezometer no. 152 at 1 Bedervale St, Bourkelands

CBD Sub-catchment

The CBD Sub-catchment is greatly influenced by the management of the dewatering bore scheme in the Intensive Borefield. High average increases and decreases in SWL of piezometers within close proximity of the Intensive Borefield can be correlated to the dewatering bore operations.

Of the thirty-nine CBD Sub-catchment piezometers, eleven (28%) showed increasing SWL, thirteen revealed decreasing SWL (33%) and fourteen (36%) remained dry over the 2022/23 reporting period. One (3%) remained stable.

CBD Sub Catchment (4)			
Increased	11	13	Decreased
Average	0.95	4.01	Average
Maximum	2.45	16.24	Maximum
Minimum	0.16	0.06	Minimum

Average SWL increases of 0.95m were reported across twenty-five water-bearing piezometers within the CBD Sub-catchment during the 2022/23 reporting period. Maximum increase of 2.45m was recorded at the deep piezometer no. 39 at Wagga Wagga High School, Turvey Park, at an average SWL of 24.2m below the surface.

The average SWL for 2022/23 in CBD Sub-catchment water bearing piezometers is 6.84m. This figure represents a decrease in SWL of 1.91m when compared to the 2021/22 reporting period average of 4.93m.

Eastern CBD Sub-catchment

Limited piezometers are situated in the Eastern CBD sub-catchment. Of the three piezometers monitored, two increased at an average SWL of 0.65m, and one remained dry.

Eastern CBD Sub-Catchment (5)			
Increased	2	0	Decreased
Average	0.65	-	Average
Maximum	0.73	-	Maximum
Minimum	0.56	-	Minimum

Far eastern CBD Sub-catchment

As a small sub-catchment minimal data on the SWL is available for the far eastern CBD piezometer category. Both piezometers were shown to be dry during 2022/23.

Far Eastern CBD Sub-Catchment (6)			
Increased	0	0	Decreased
Average	-	-	Average
Maximum	-	-	Maximum
Minimum	-	-	Minimum

Eastern Sub-catchment

The Eastern sub-catchment is the largest sub-catchment and contains 42 piezometers, the largest number of piezometers within a sub-catchment. The 2022/23 reporting period revealed an increase in SWL. Twenty-four (57%) of Eastern Sub-catchment piezometers showed an increase in SWL, with none revealing a decrease in SWL and eighteen (43%) remaining dry over the 2022/23 reporting period.

Eastern Sub-Catchment (7)			
Increased	24	0	Decreased
Average	1.33	-	Average
Maximum	10.25	-	Maximum
Minimum	0.06	-	Minimum

Increasing SWL piezometers within the Eastern sub-catchment ranged from 10.25m to 0.06m with an average increase of 1.33m across twenty-four water bearing piezometers. The highest SWL increase of 10.25m was found at piezometer no. 157, located at Holbrook Rd, Springvale

Far eastern Sub-catchment

The far eastern sub-catchment covers the second largest area of all the sub-catchments, containing mainly larger rural residential landholdings. Coverage of piezometers in this sub-catchment is poor and may not be a true indication of the sub-catchment as a whole. Of the three piezometers located in the sub-catchment, two piezometers increased in SWL whilst none decreased in SWL. The remaining piezometer stayed dry during the reporting period.

Far Eastern Sub-Catchment (8)			
Increased	2	0	Decreased
Average	1.77	-	Average
Maximum	2.00	-	Maximum
Minimum	1.53	-	Minimum

Two piezometers (no.168 and 169) on Bakers Lane, Lake Albert showed increases in a SWL depth to 4.84m and 6.19m for both piezometers, respectively.

Tarcutta/Humula

Eight piezometers are located in the rural villages of Tarcutta and Humula. Seven piezometers increased in SWL at an average of 1.83m, and remaining one piezometers remained dry.

Tarcutta-Humula (T/H)			
Increased	7	0	Decreased
Average	1.83	-	Average
Maximum	5.13	-	Maximum
Minimum	0.87	-	Minimum

4.2 Groundwater Contour Mapping

During the 2014/15 reporting period Council engaged Catchment Simulation Solutions to provide a mechanism for Council for the production of ArcGIS groundwater contour maps based on measurements entered into a field-based spreadsheet taken from the 200+ piezometers within the LGA.

This integrated system will allow Council to keep updating the piezometer the piezometer data directly into the spreadsheet and allow this information to be interpolated and mapped on demand.

The mapping system allows Council to map four different contours:

1. Groundwater table depth from surface (m)
2. Groundwater table depth in AHD (mAHD)
3. Electrical conductivity (EC)
4. Differences in groundwater table depth over different years/seasons.

Figure 6 shows the groundwater contour map of Western catchments of Wagga Wagga (Calvary, Turvey Park, Mount Austin, Ashmont, Glenfield, Lloyd) interpolated from piezometers measured in June 2018. Red areas indicate extremely shallow groundwater levels between 0 – 2m from surface level, orange areas show 2 – 4m from surface, green areas showing 4 – 10m from surface and purple areas show groundwater levels greater than 10m from surface. Numbers labelling piezometer points (black dots) show actual readings taken in the field on or before June 2018.

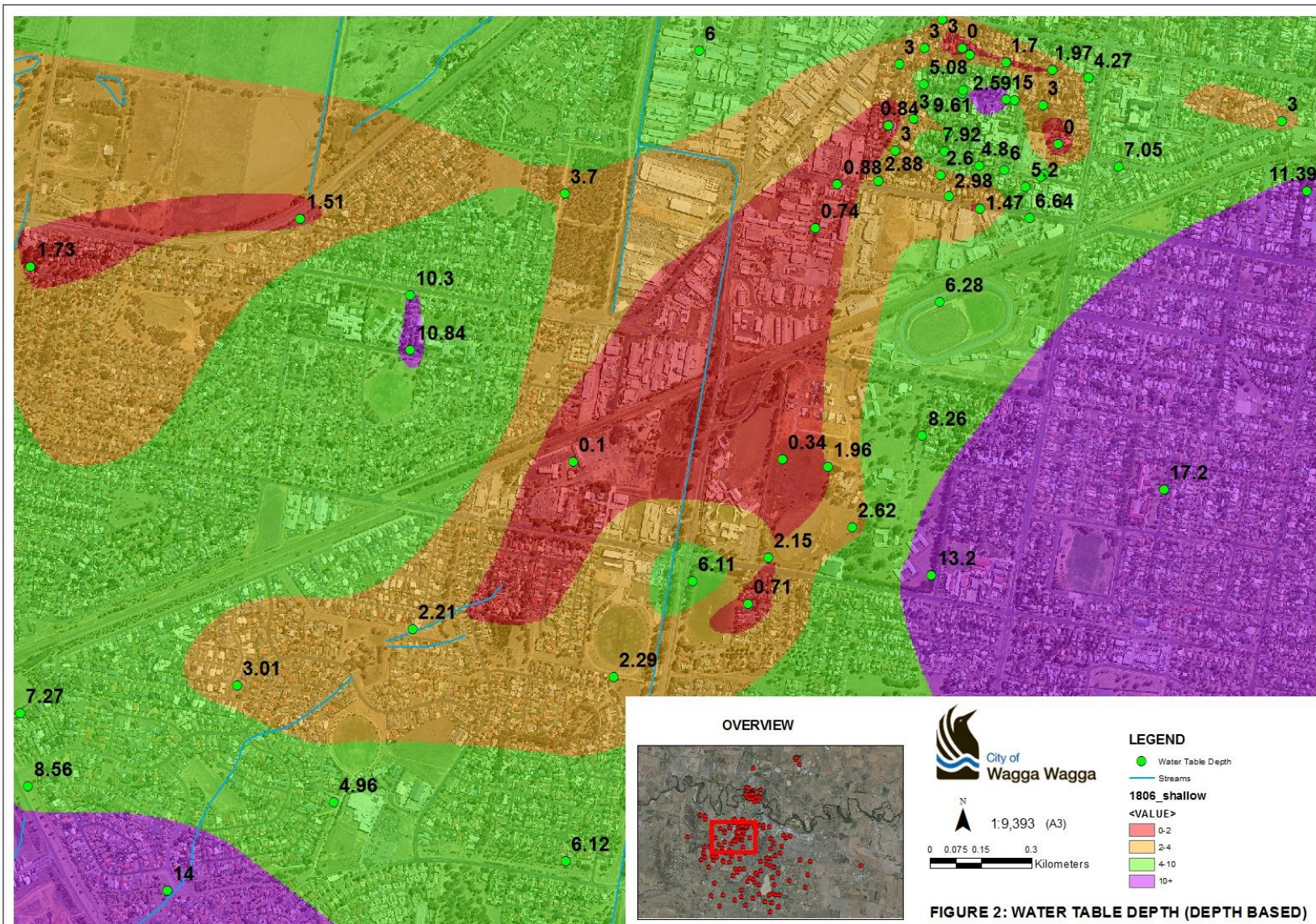


Figure 6: Groundwater contour map showing water table contour levels interpolated from piezometer readings taken in June 20

4.3 Critical Piezometers

Piezometers with both EC concentrations (>5 dS/m) and a high SWL (<5m) can indicate urban salinity concerns. The criteria of EC greater than 5 dS/m and SWL of less than 5 metres has been taken from the previous reports to maintain consistency of which piezometers and surrounding areas are most susceptible to urban salinity problems (Table 2).

Table 2: Critical piezometers, piezometers displaying high Standing Water Levels (<5.00m) and Electrical Conductivity (>5dS/m) in 2022/23.

Piezometer Number	Location	Urban Sub catchment	Piezometer Drill Depth (m)	Average SWL 2022/23 (m)	Average EC 2022/23 (dS/m)
7	South Campus, Turvey Park	3	3.90	-0.40	7.02
9	South Campus, Turvey Park	3	4.30	0.36	6.32
18	Nathan Park, Ashmont	2	11.00	-0.12	8.07
29	Dalkeith Ave, Lake Albert	7	10.00	-2.07	6.05
54	Derna Pl, Ashmont	2	3.00	-1.18	5.45
57	7 Mortimer Pl, Central Wagga	3	3.00	-0.28	13.53
88	2 Chaston St, Central Wagga	4	10.00	-2.17	11.21
89	31 Chaston St, Central Wagga	4	5.50	-1.38	8.05
147	South Campus, Turvey Park	3	3.30	-0.25	21.55
190	Roach Rd, Riverview	1	9.20	-3.70	5.12

Ten piezometers in 2022/23 (compared with eleven in 2021/22, nine in 2020/21, eight in 2019/20, nine in 2018/19, eight in 2017/18 and 2016/17, eleven in 2015/16 and nine in 2014/15) recorded both an EC greater than 5 dS/m and SWL of less than 5 metres in the reporting period. Piezometers with these characteristics are critical and have the potential to cause extensive damage to the surrounding environment. The surrounds of piezometers in Table 2 are at risk from urban salinity due to their high standing water levels.

Six of the ten 'members' of the critical piezometer list are located in urban salinity 'hotspot' areas of CSU South Campus, Showgrounds and the Calvary Hospital area (CBD sub catchments 3 and 4). Piezometers no. 18 and 54 are located in the Ashmont area of the far Western Sub catchment. Standing water levels of piezometer no. 29 (located at Dalkeith Ave, Lake Albert) may be high due to lateral influences of Lake Albert. This piezometer has increased by 0.84m on average over the reporting period, which is similar to the increase in Lake Albert's depth, through higher rainfall and inflows.

Critical piezometers provide valuable data on target areas for remediation action. The severity within these critical areas especially in area noted for high salinity levels is concerning for urban salinity management in Wagga Wagga.

4.4 Dewatering Bores

The dewatering bores of the Intensive Borefield are monitored for the volume of water and amount of salt discharged to the Murrumbidgee River to be calculated (Table 3). Groundwater from the Intensive Borefield is pumped to the Murrumbidgee River via a pump station adjacent to the intersection of the Sturt Highway and Moorong Street.

Table 3: Intensive Borefield salt load calculations for July 2022 – June 2023.

Bore number	Bore Location	Volume Pumped (m3)	Pump Hours	Average EC (dS/m)	Salt Discharged (tonnes)
1	Emblen Park	5,530.69	-	1.36	4.81
2	Meurant - Emblen roundabout	3,611.14	2,735.11	2.35	5.42
3	19 Sullivan Ave	21,355.52	4,755.53	2.57	35.10
4	3 Cullen Rd	35,658.29	8,924.35	2.35	53.54
5	Calvary Hospital Carpark	8,395.68	-	2.32	12.48
6	Docker St - Meurant Ave	11,013.14	2,715.76	2.61	18.42
7	9 Hardy Ave	12,853.69	7,366.05	3.13	25.74
8	25 Gormly Ave	16,383.71	7,108.62	2.06	21.61
10	Chaston St - Foxborough Ave	17,844.58	4,703.72	2.37	27.05
	Total	132,646.43	38,309.14		204.16
	Average (per bore)	16,580.80	4,788.64	2.35	25.52
	Average (per day)	363.41	104.96		0.56

A daily average of 363.41 cubic metres (363,410 litres) of groundwater from nine dewatering bores was pumped into WWCC's stormwater system during 2022/23. Based on EC readings, this volume represents average daily discharges of 0.56 tonnes (560kg) of salt from groundwater aquifers below the Calvary Hospital precinct.

At present, Wagga Wagga City discharges this saline water to the river. Investments in revegetation, rear of block drainage and education programs are considered by Council as sufficient offsets to permit the discharge of moderately saline water.

5. DISCLAIMER

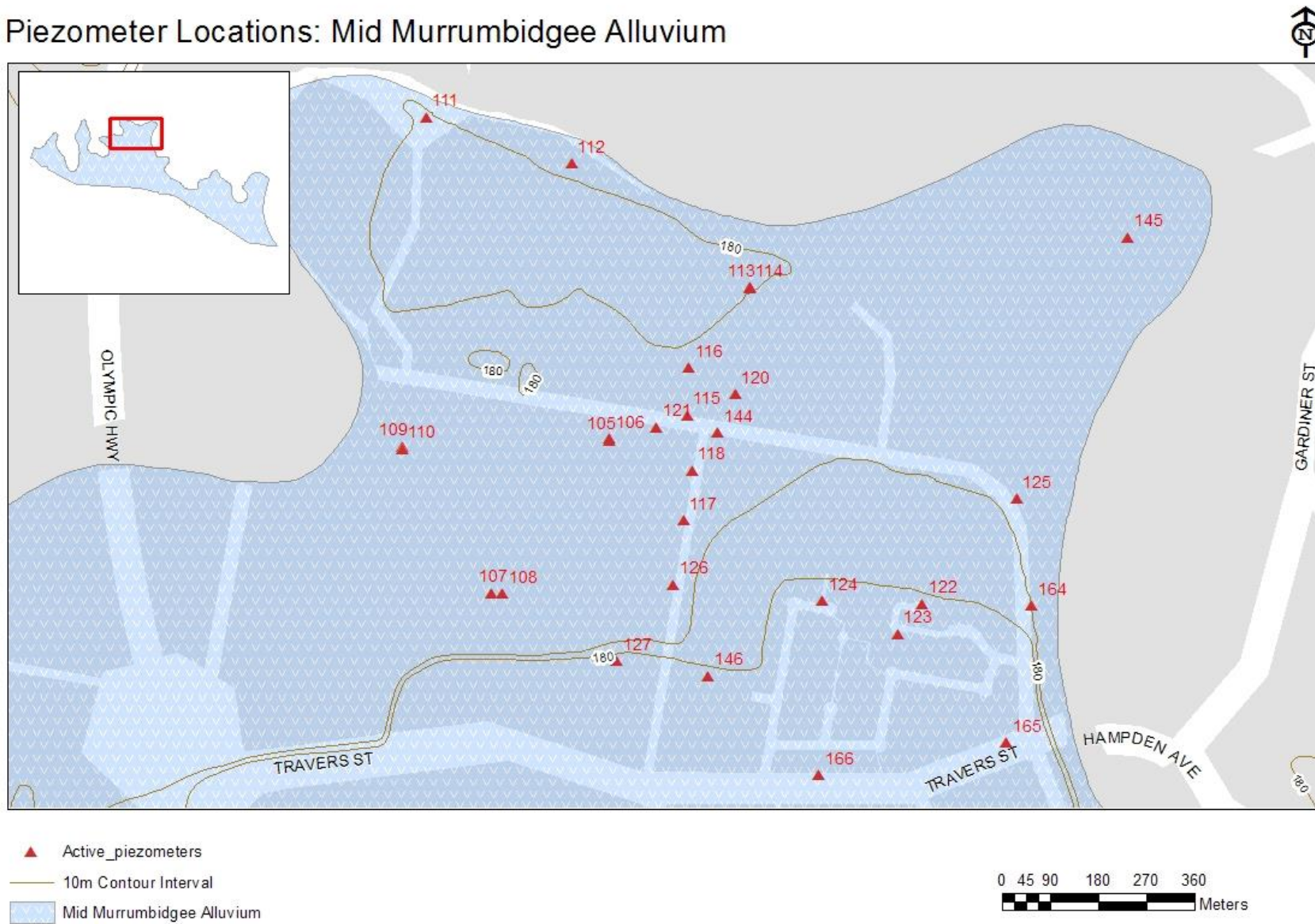
This report has been compiled by Wagga Wagga City Council's Department of Environmental & Community Services exercising all due care and attention. Council does not accept any responsibility for any inaccurate or incomplete information supplied by third parties. No representation is made as to the accuracy, completeness or suitability for any particular purpose of the source material included in this report.

6. REFERENCES

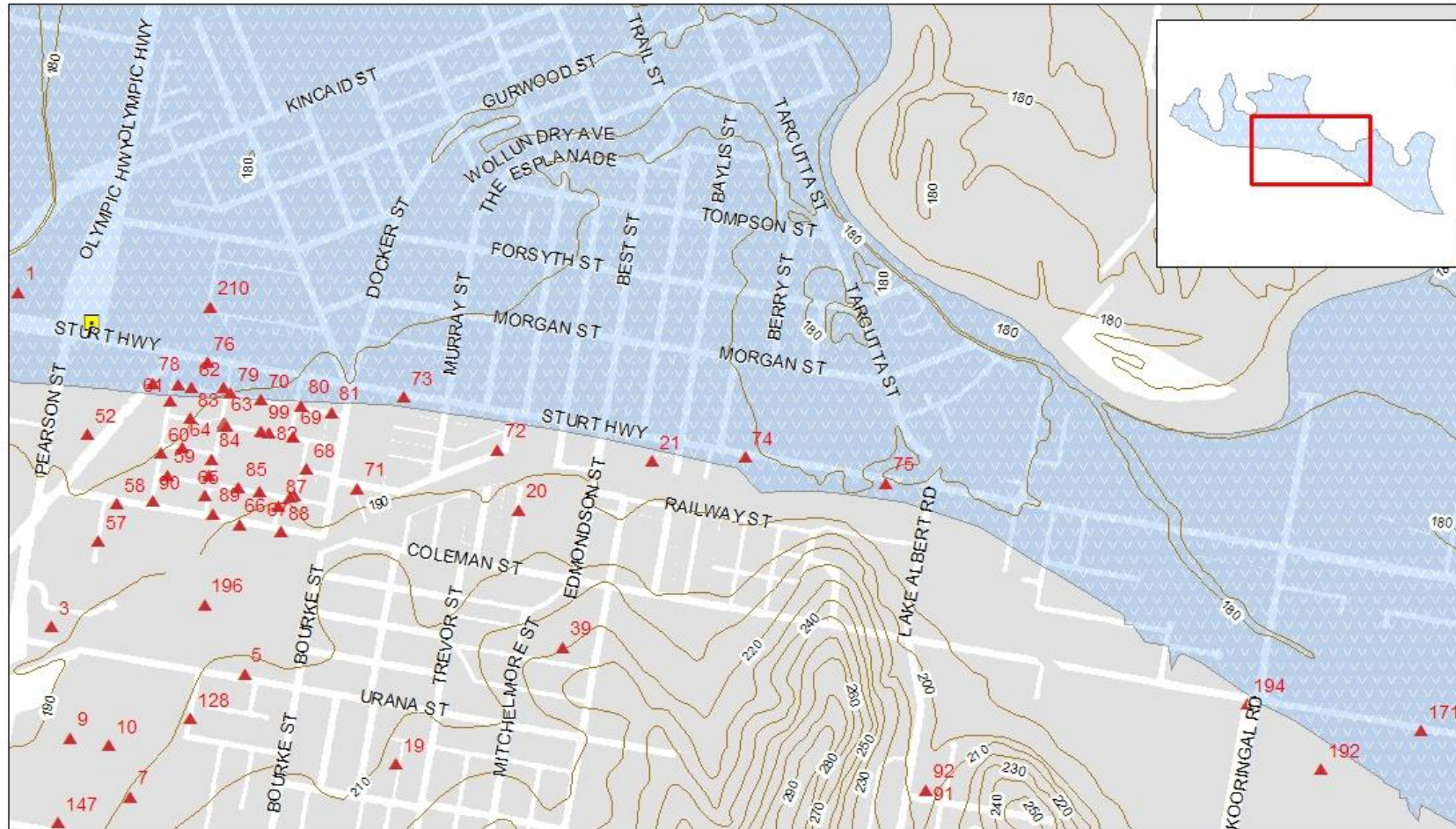
Golder Associates Pty Ltd (2007). Wagga Wagga Urban Salinity – Water level and Quality Study (1999-2006). Golder Associates

**APPENDIX A:
MAPS OF PIEZOMETER LOCATIONS**

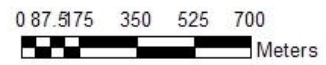
Piezometer Locations: Mid Murrumbidgee Alluvium



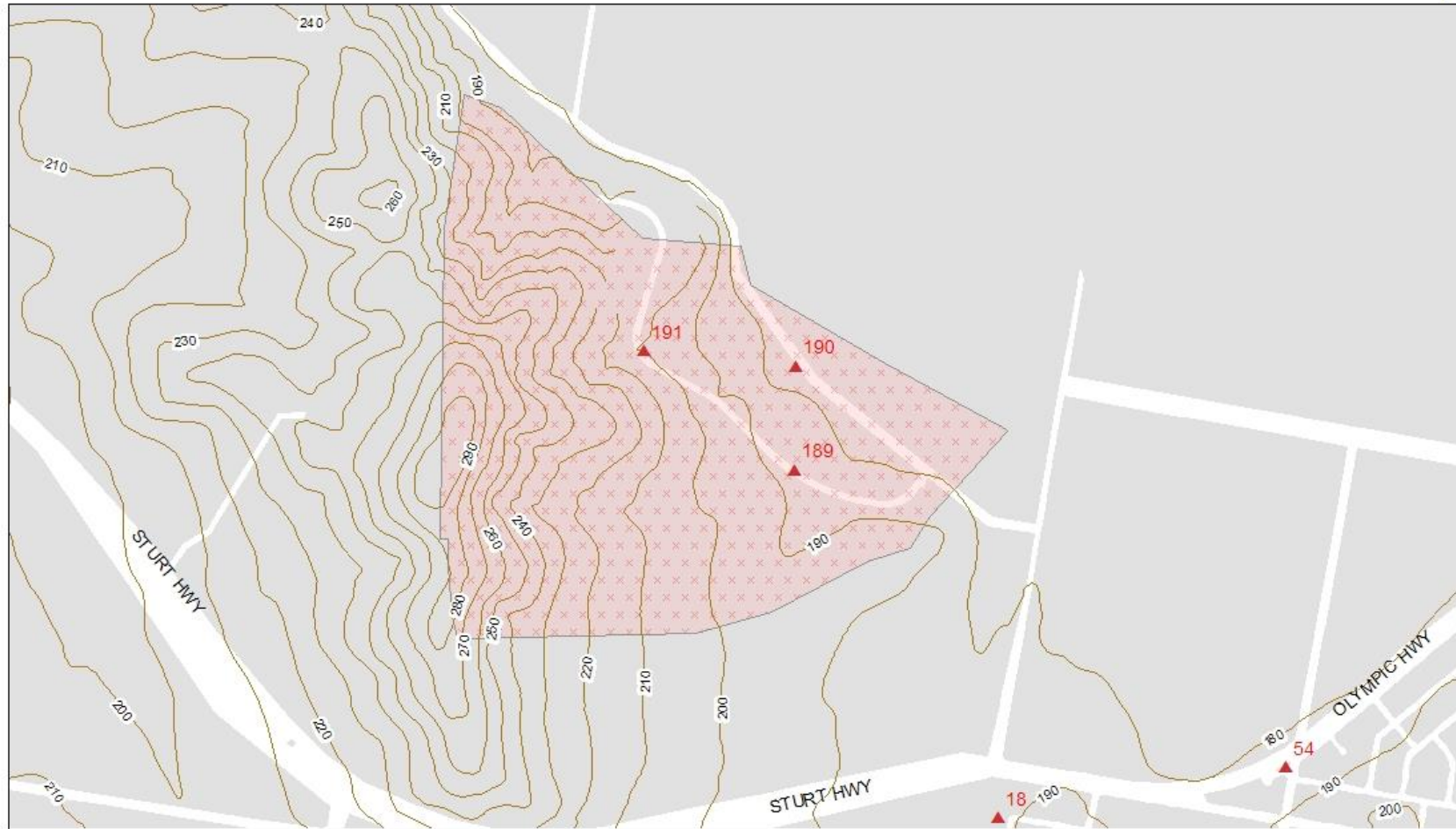
Piezometer Locations: Mid Murrumbidgee Alluvium






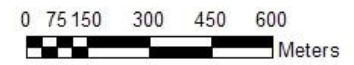
- ▲ Active_piezometers
- Pump Station
- 10m Contour Interval
- Mid Murrumbidgee Alluvium



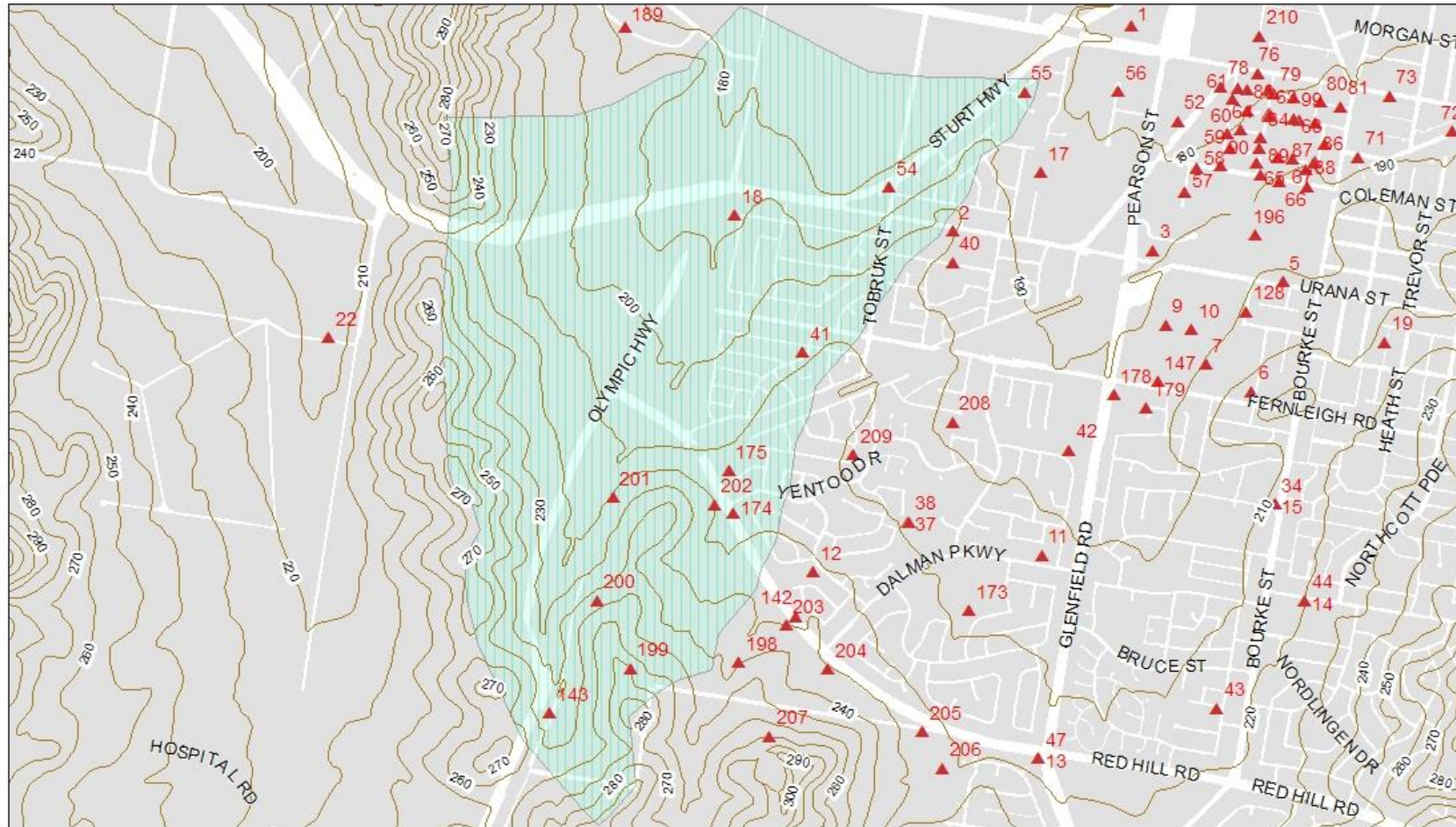
Piezometer Locations: North Western Sub-catchment



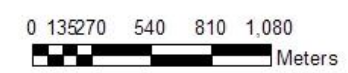
-  Active_piezometers
-  10m Contour Interval
-  North Western Sub-catchment



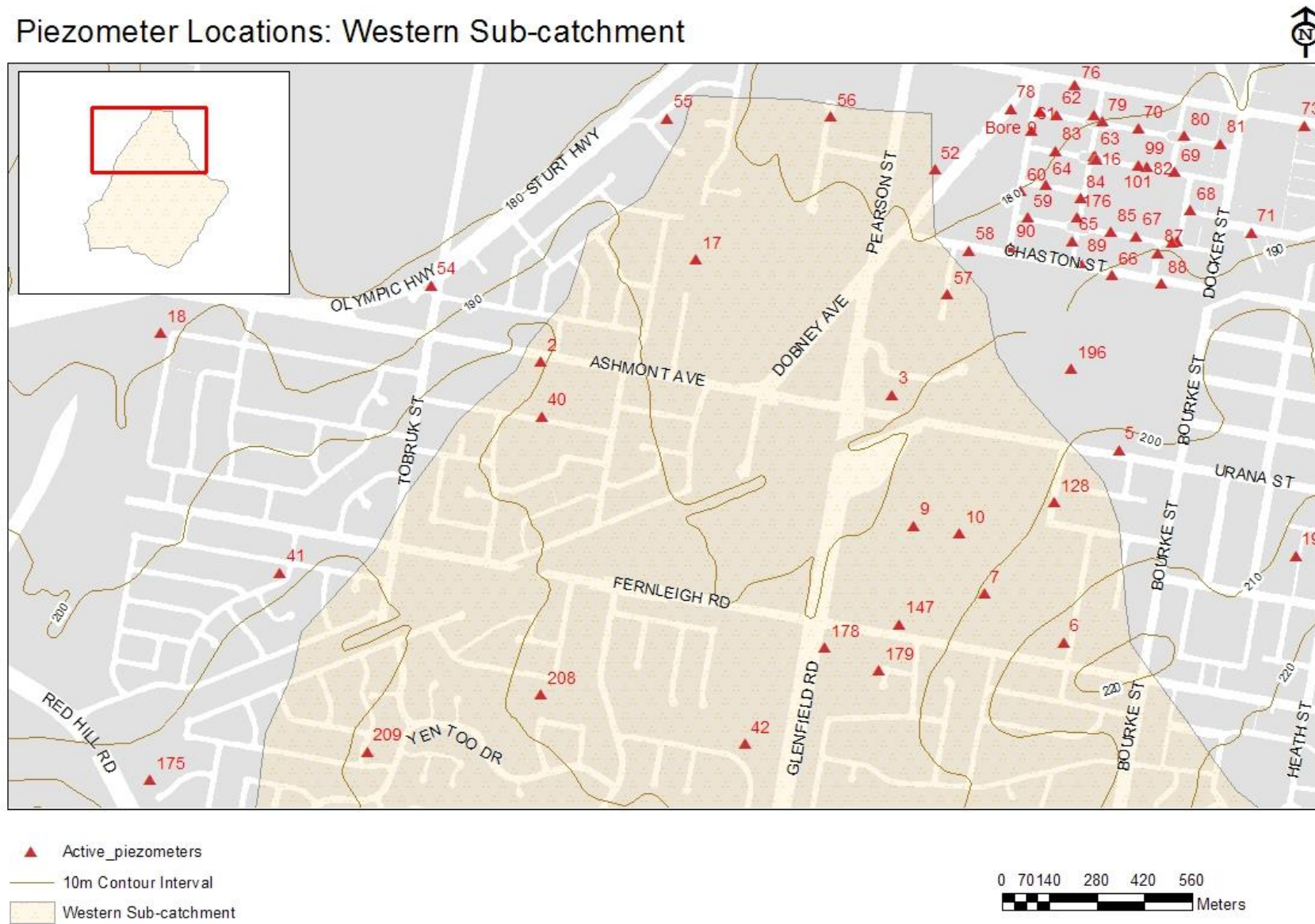
Piezometer Locations: Far Western Sub-catchment



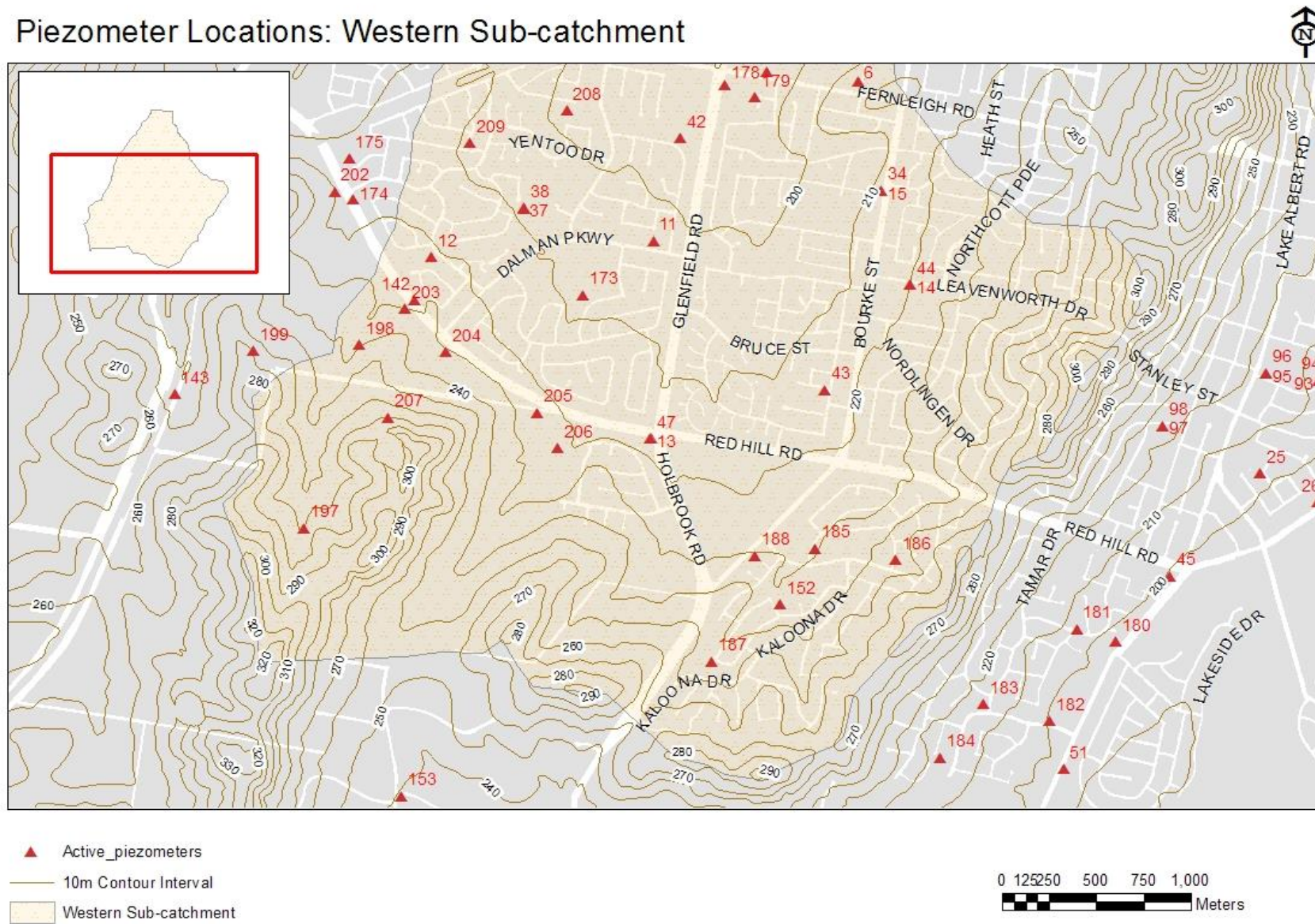
- ▲ Active_piezometers
- 10m Contour Interval
- ▨ Far Western Sub-catchment



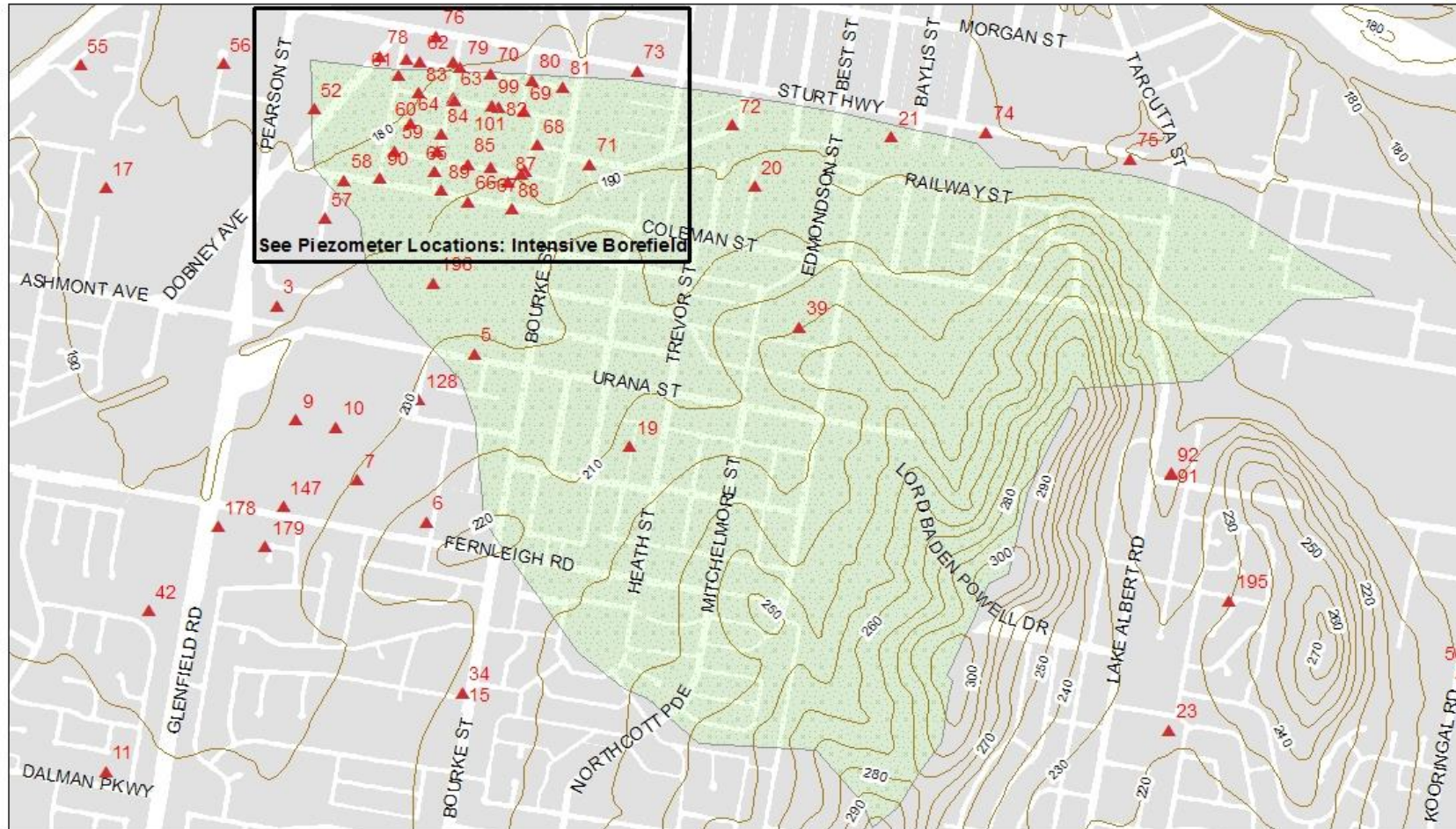
Piezometer Locations: Western Sub-catchment



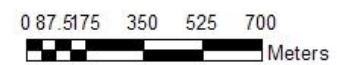
Piezometer Locations: Western Sub-catchment



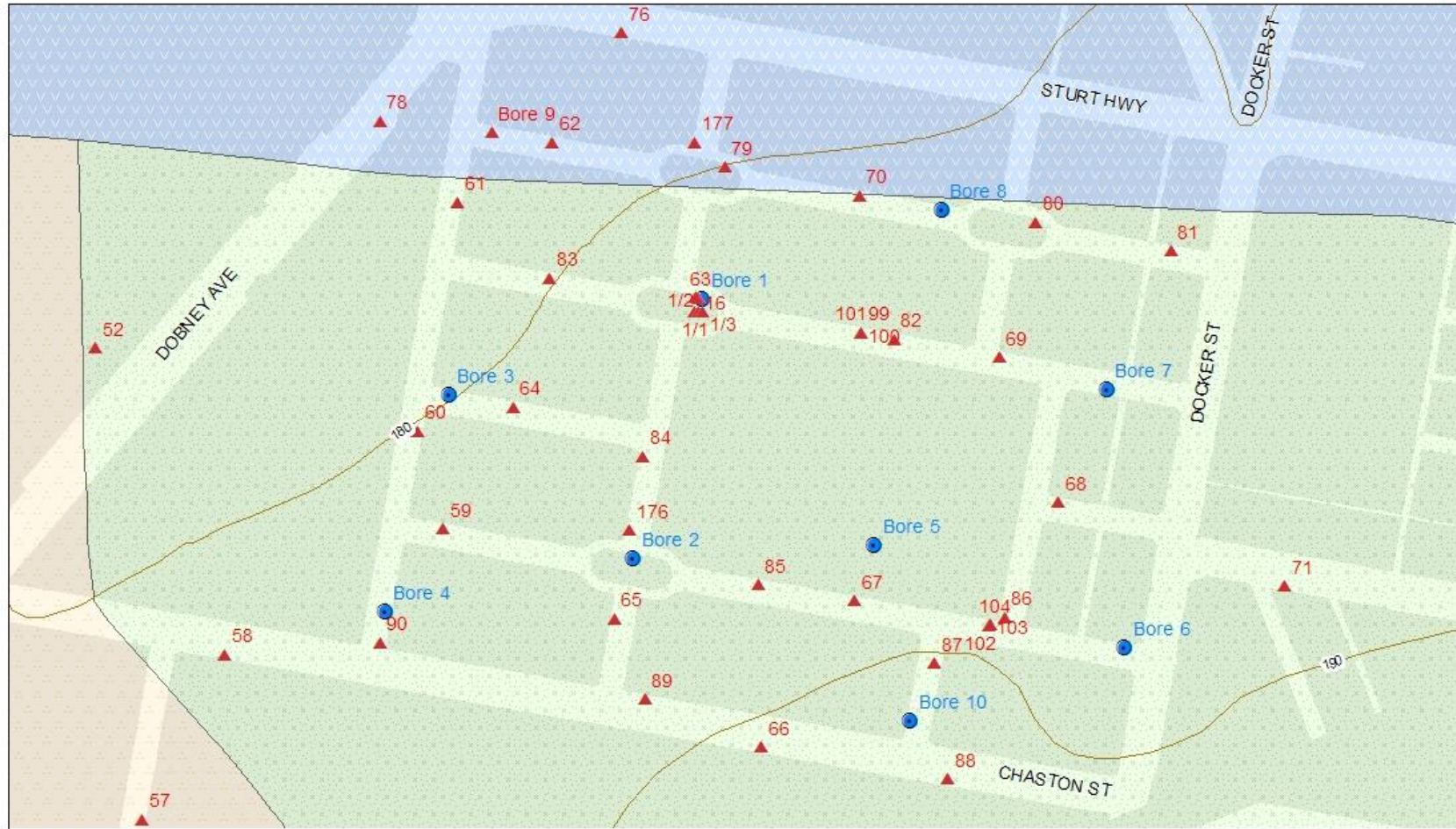
Piezometer Locations: CBD Sub-catchment



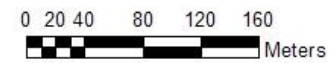
- ▲ Active piezometers
- 10m Contour Interval
- CBD Sub-catchment



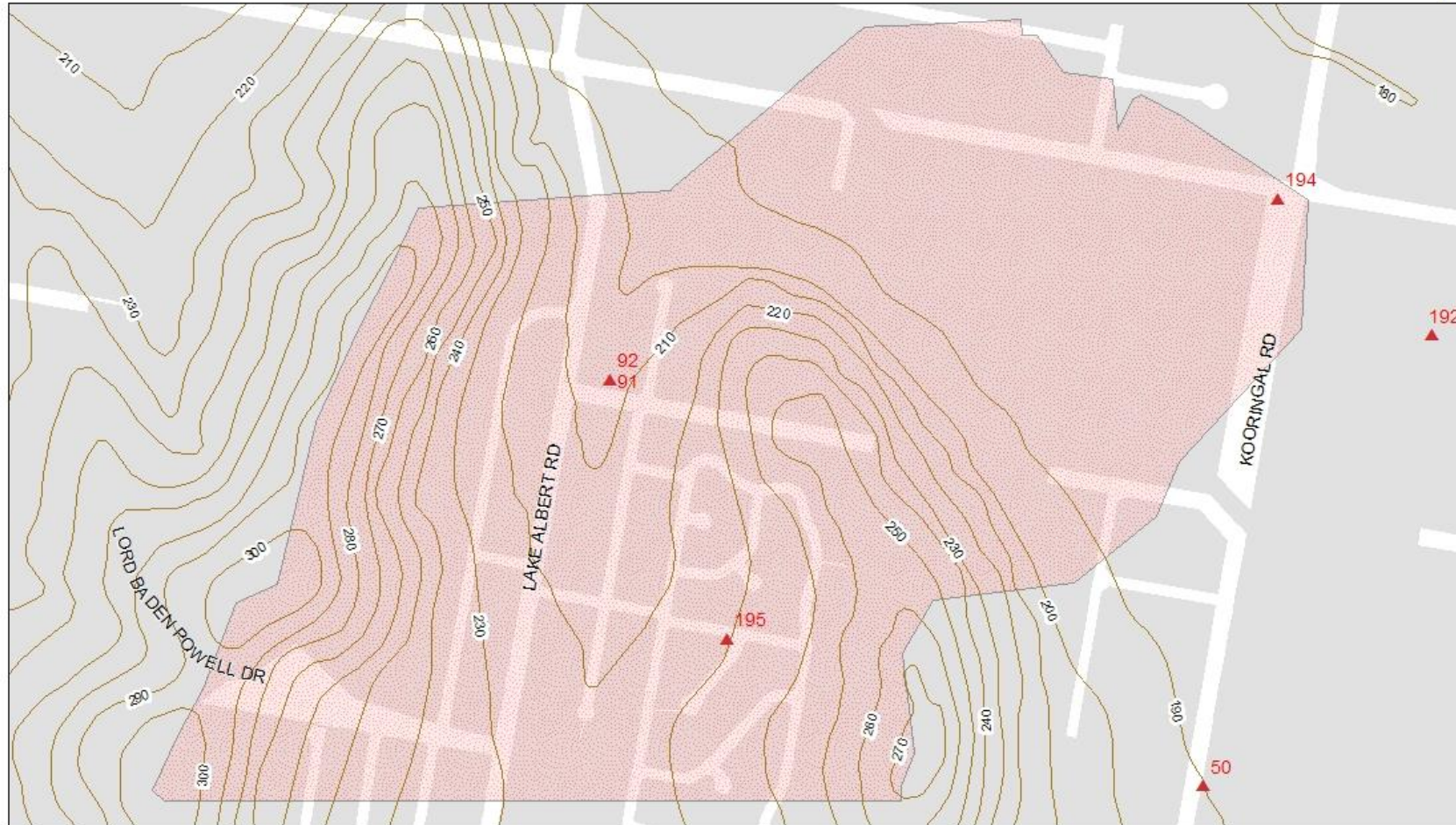
Piezometer Locations: Intensive Borefield



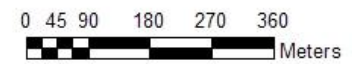
- ▲ Active_piezometers
- Dewatering Bore
- Pump Station
- 10m Contour Interval
- Mid Murrumbidgee Alluvium
- Western Sub-catchment
- CBD Sub-catchment



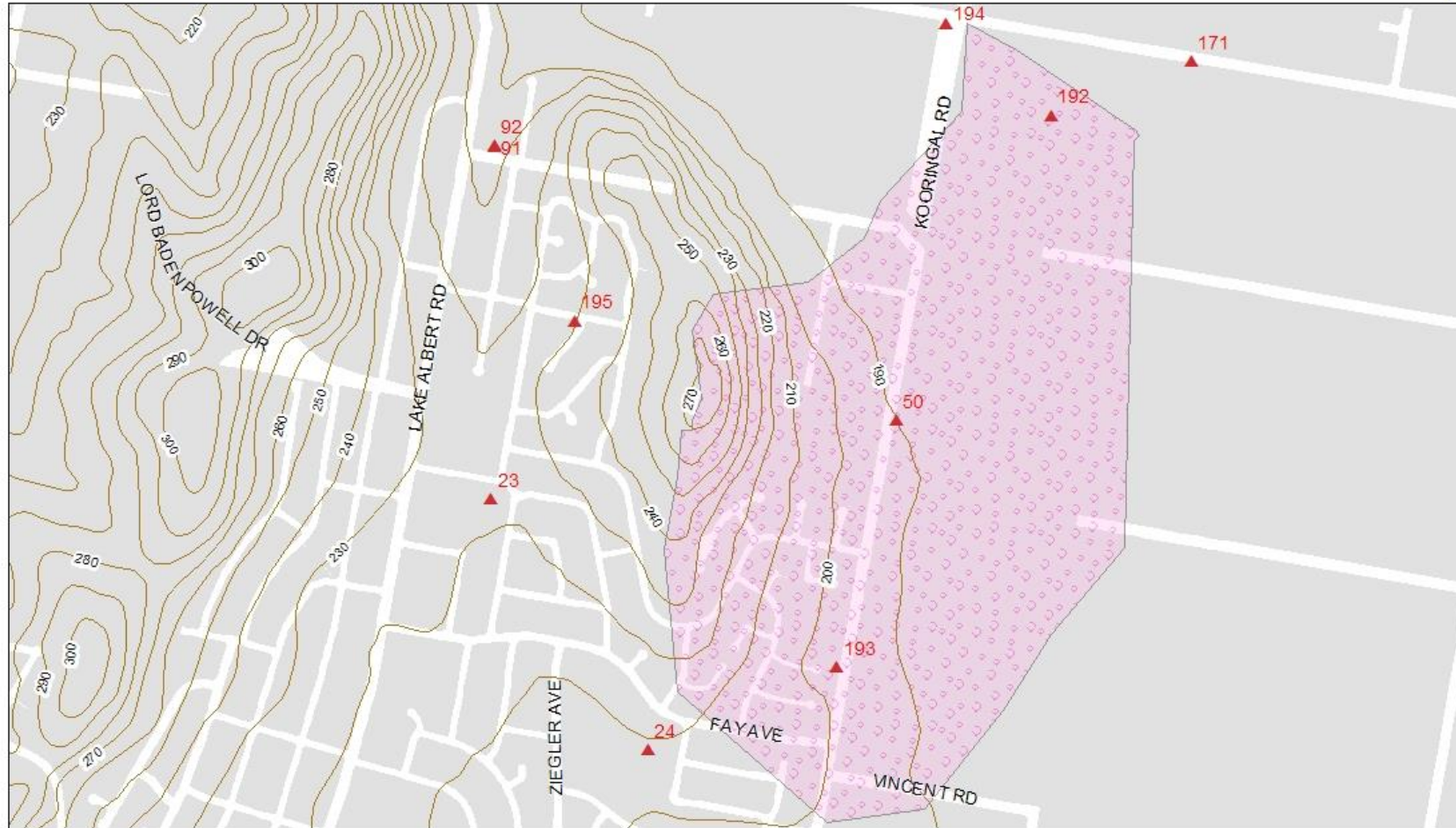
Piezometer Locations: Eastern CBD Sub-catchment



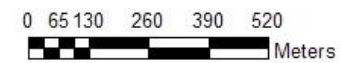
- ▲ Active_piezometers
- 10m Contour Interval
- Eastern CBD Sub-catchment



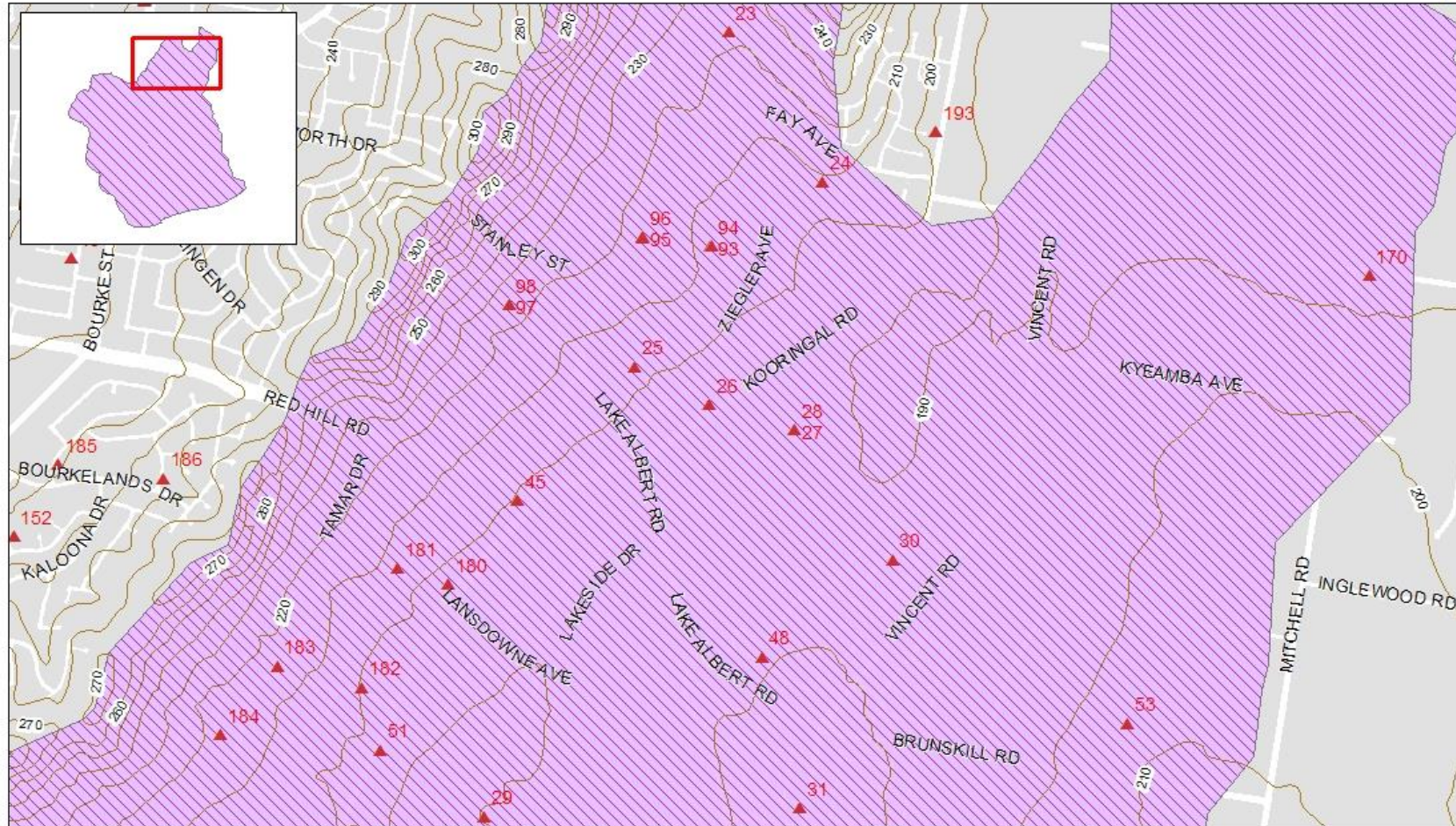
Piezometer Locations: Far Eastern CBD Sub-catchment



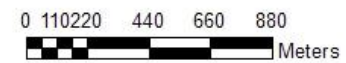
- ▲ Active_piezometers
- 10m Contour Interval
- ▨ Far Eastern CBD Sub-catchment



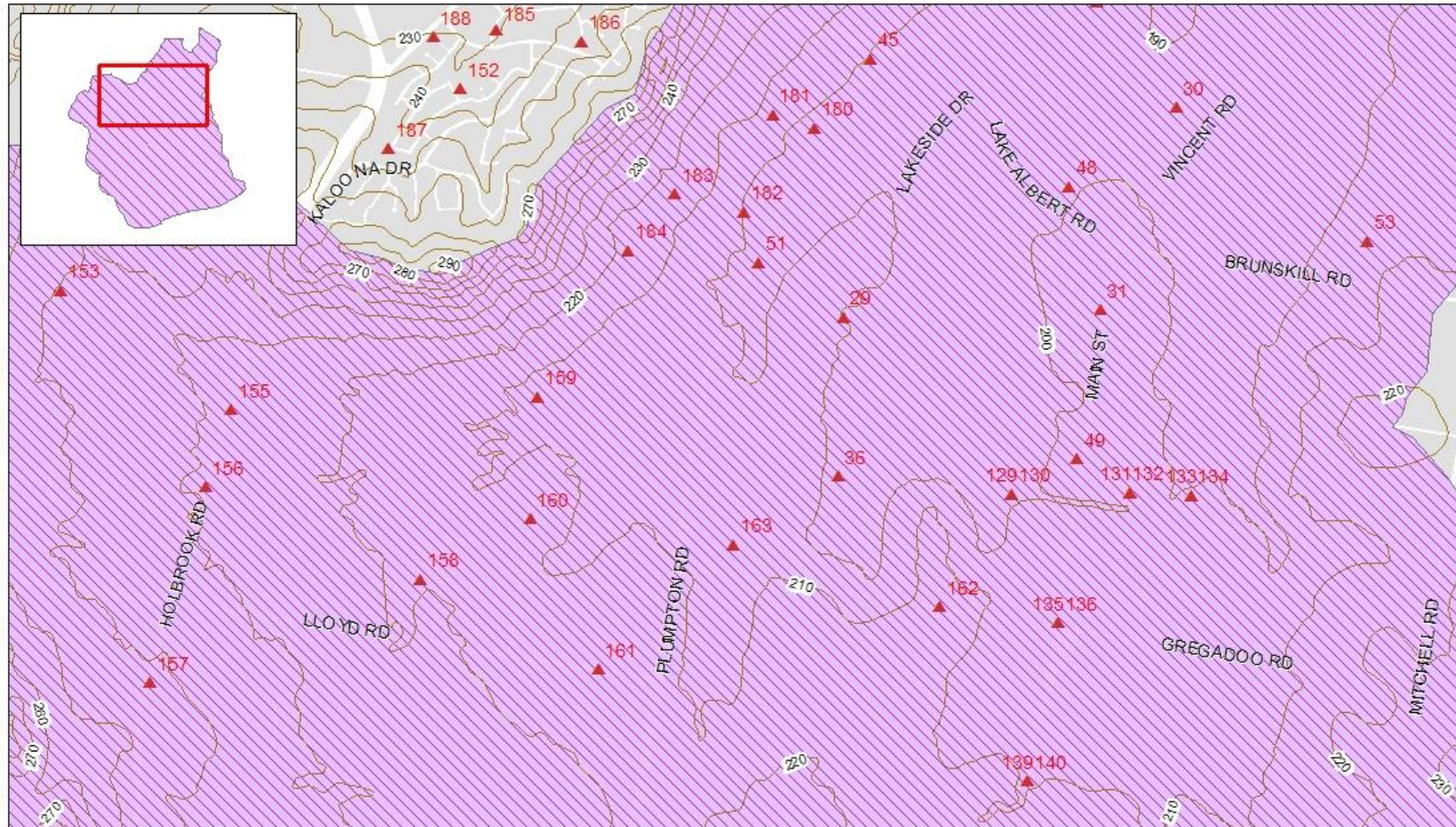
Piezometer Locations: Eastern Sub-catchment



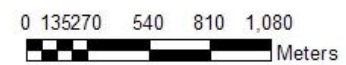
- ▲ Active_piezometers
- 10m Contour Interval
- ▨ Eastern Sub-catchment



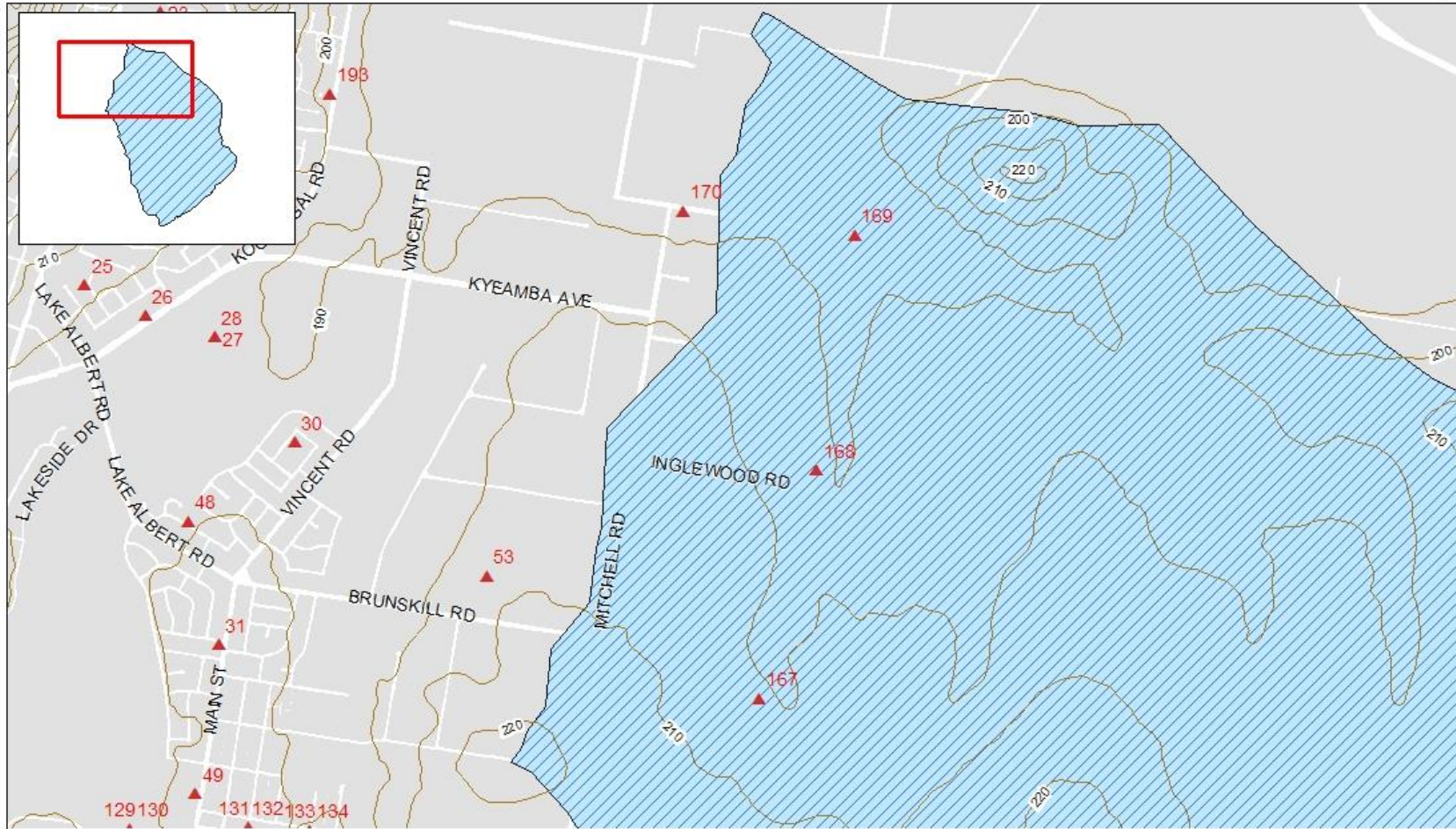
Piezometer Locations: Eastern Sub-catchment






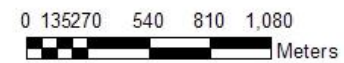
- ▲ Active_piezometers
- 10m Contour Interval
- ▨ Eastern Sub-catchment



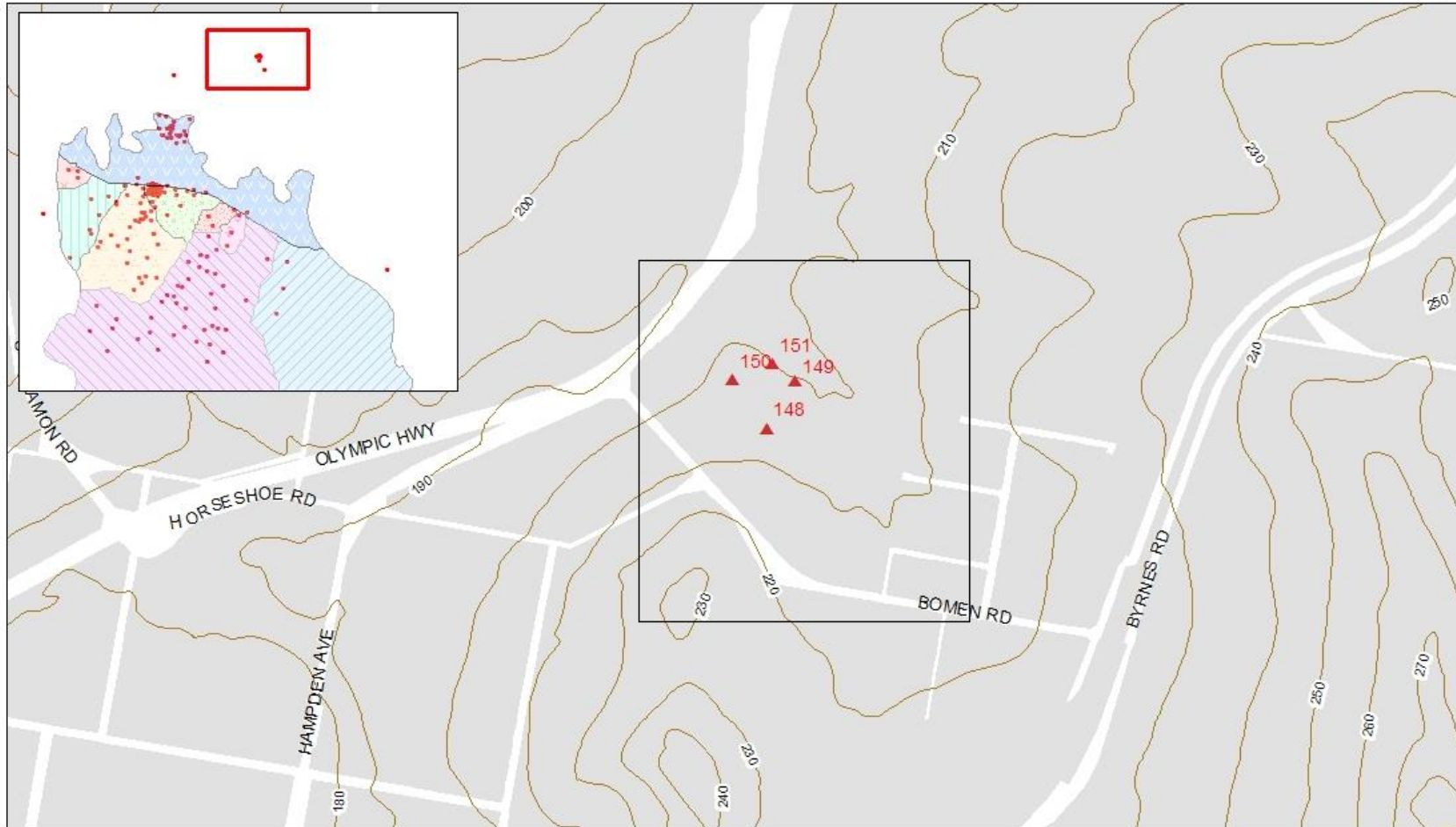
Piezometer Locations: Far Eastern Sub-catchment



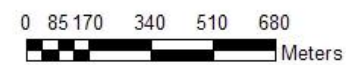
-  Active_piezometers
-  10m Contour Interval
-  Far Eastern Sub-catchment



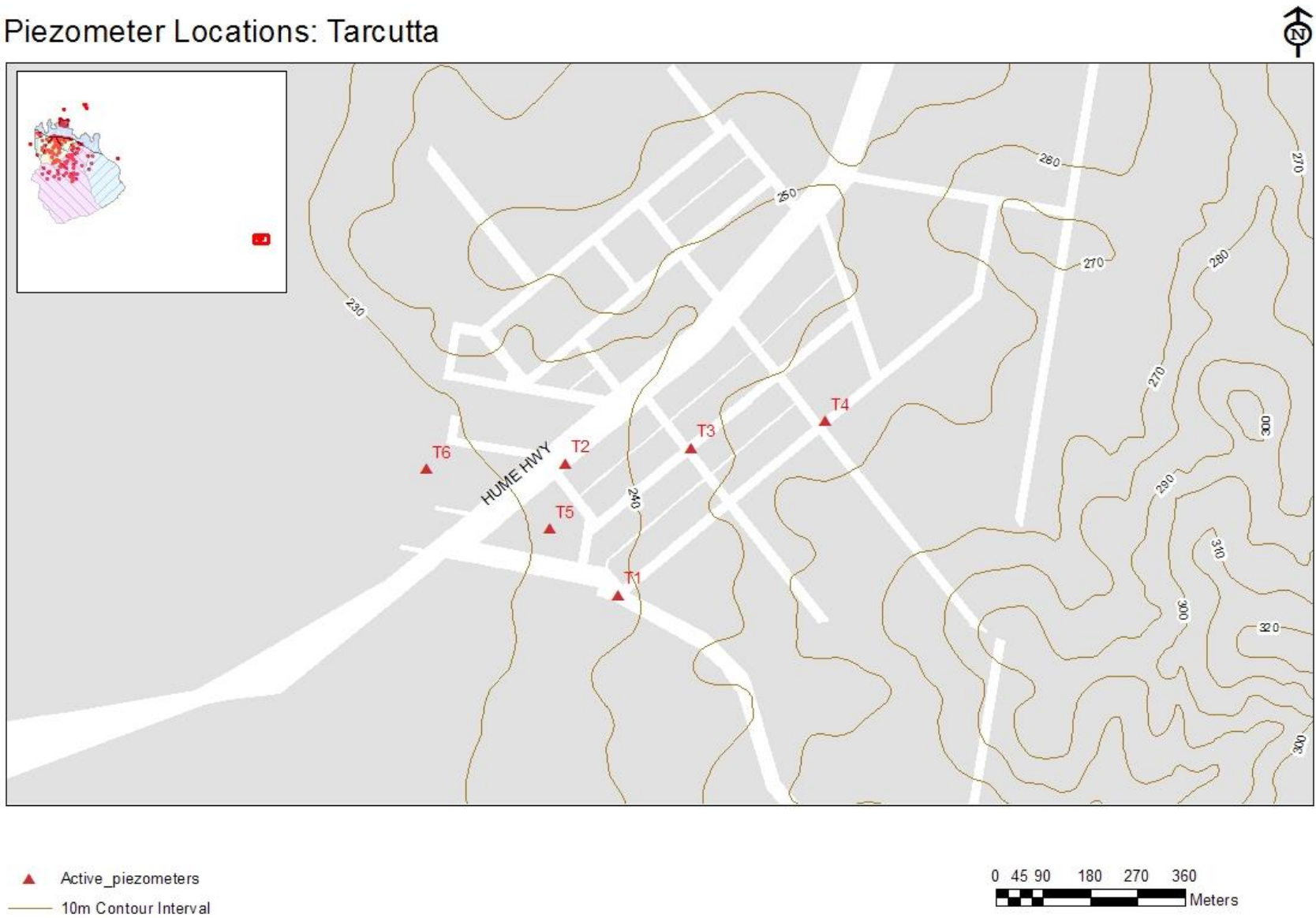
Piezometer Locations: Undefined



- ▲ Active_piezometers
- 10m Contour Interval
- Undefined



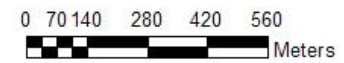
Piezometer Locations: Tarcutta



Piezometer Locations: Humula

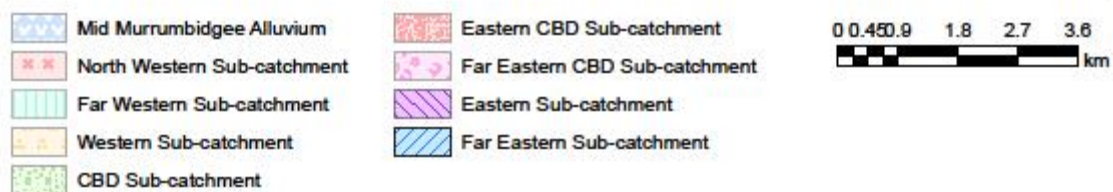
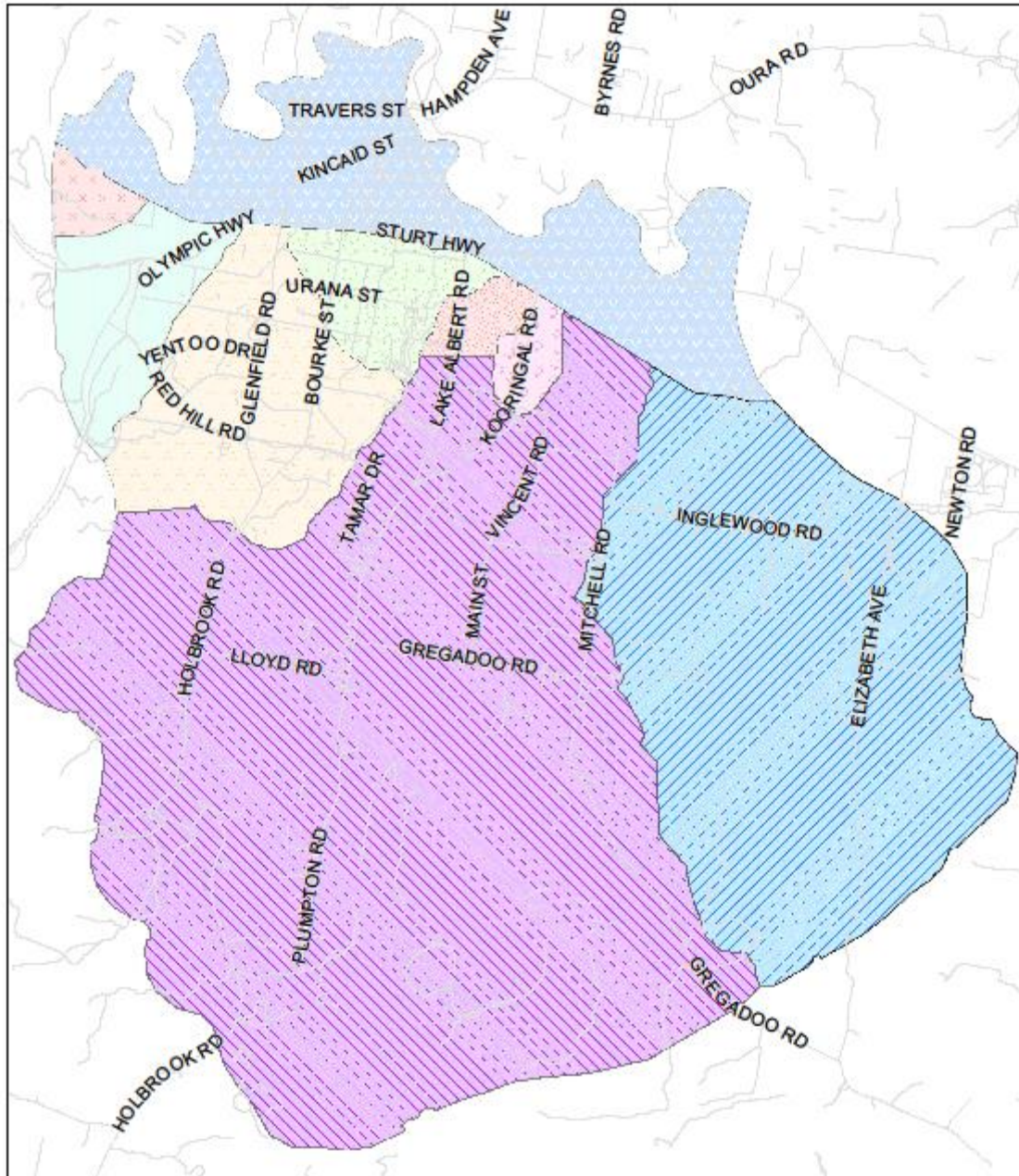


- ▲ Active_piezometers
- 10m Contour Interval



**APPENDIX B:
WAGGA WAGGA MAJOR URBAN SUB-CATCHMENTS**

Wagga Wagga Major Urban Sub-catchments



Please note that the 'Undefined' and 'Tarcutta/Humula' piezometer categories are not presented on this map.

**APPENDIX C:
STANDING WATER LEVEL & SALINITY DATA - JULY 2022 TO JUNE 2023**

Piezometer Number	Piezometer Location	Urban Sub catchment	Piezometer Depth	Date Drilled	Average SWL 21/22	Average SWL 22/23	Change In SWL	Average EC 21/22	Average EC 22/23	Change in EC
1	Cnr Moorong St - Sturt Hwy, Central Wagga	MA	10.20	May-94	-7.18	-7.43	-0.25	0.78	0.72	-0.06
2	Ashmont Primary School, Ashmont	3	10.30	Jun-94	DRY	DRY	DRY	DRY	DRY	DRY
3	Cheshire St, Central Wagga		7.40	May-94						
4	Showground arena, Turvey Park		3.30	Mar-94						
5	Showgrounds, Turvey Park	4	9.70	May-94	DRY	DRY	DRY	DRY	DRY	DRY
6	South Campus, Turvey Park	3	13.20	May-94	DRY	DRY	DRY	DRY	DRY	DRY
7	South Campus, Turvey Park	3	3.90	Mar-94	-1.56	-0.40	1.16	4.11	7.02	2.91
8	South Campus, Turvey Park		4.20	Mar-94						
9	South Campus, Turvey Park	3	4.30	Mar-94	-0.03	0.36	0.39	6.54	6.32	-0.22
10	South Campus, Turvey Park	3	4.10	Mar-94	-1.04	-0.10	0.94	2.54	3.19	0.65
11	3 Dalman Parkway, Glenfield	3	7.10	May-94	DRY	-2.47	INC	DRY	0.75	INC
12	Kimba Dr, Glenfield	3	14.00	May-94	DRY	DRY	DRY	DRY	DRY	DRY
13	Cnr Glenfield - Red Hill Rds, Lloyd (shallow)	3	8.58	May-94	-3.91	-2.67	1.24	1.28	1.27	-0.01
14	Mt Austin High School, Tolland (shallow)	3	9.90	May-94	DRY	DRY	DRY	DRY	DRY	DRY
15	Mt Austin Public School, Mt Austin (shallow)	3	9.90	May-94	DRY	DRY	DRY	DRY	DRY	DRY
16	Emblen Park, Central Wagga	4	15.10	Jan-95	-3.21	-6.25	-3.04	1.40	1.22	-0.17
17	Best Park Reserve, Ashmont	3	13.70	Jan-95	-2.93	-2.05	0.88	3.20	3.16	-0.04
18	Nathan Park, Ashmont	2	11.00	Jan-95	-0.86	-0.12	0.74	8.12	8.07	-0.04
19	Turvey Park Public School, Turvey Park	4	17.20	Jan-95	DRY	DRY	DRY	DRY	DRY	DRY
20	Kildare Catholic College, Turvey Park	4	14.90	Jan-95	-10.11	-8.75	1.36	6.13	6.02	-0.11
21	South Wagga Public School, Central Wagga	4	13.00	Jan-95	NO ACCESS	NO ACCESS	NA	NO ACCESS	NO ACCESS	NA
22	Norman Duck Oval, San Isidore	0	17.00	Mar-95	DRY	DRY	DRY	DRY	DRY	DRY
23	Sacred Heart Primary School, Koorungal	7	23.00	Mar-95	NO ACCESS	NO ACCESS	NA	NO ACCESS	NO ACCESS	NA
24	Koorungal High School, Koorungal	7	22.00	Mar-95	NO ACCESS	NO ACCESS	NA	NO ACCESS	NO ACCESS	NA
25	Koorungal Public School, Koorungal	7	15.20*	Jun-07*	DRY	DRY	DRY	DRY	DRY	DRY
26	514 Koorungal Rd, Koorungal	7	27.00	Mar-95	-6.17	-5.23	0.94	11.33	11.22	-0.11
27	Koorungal Rd, Koorungal (shallow)	7	13.50	Mar-95	-7.36	-6.71	0.65	12.04	11.39	-0.65
28	Koorungal Rd, Koorungal (deep)	7	21.50	Mar-95	-7.44	-6.74	0.70	11.82	11.25	-0.57
29	Dalkeith Ave, Lake Albert	7	10.00	Mar-95	-2.92	-2.07	0.84	6.34	6.05	-0.29
30	Croker Park, Lake Albert	7	13.00	Mar-95	-7.61	-7.10	0.51	NA	0.73	NA
31	Ron Wheeler Park, Lake Albert	7	30.00	Mar-95	-22.16	-21.87	0.29	1.69	1.61	-0.09

Piezometer Number	Piezometer Location	Urban Sub catchment	Piezometer Depth	Date Drilled	Average SWL 21/22	Average SWL 22/23	Change In SWL	Average EC 21/22	Average EC 22/23	Change in EC
32	Fife St Reserve, Forest Hill	0	16.00	Jul-95	DRY	DRY	DRY	DRY	DRY	DRY
33	Cooramin St, Boorooma	0	18.00	Mar-95	DRY	DRY	DRY	DRY	DRY	DRY
34	Mt Austin Public School, Mt Austin (deep)	3	24.00	Jun-95	-9.25	-7.31	1.94	4.61	4.26	-0.34
35	Emblen Park, Central Wagga		50.00	Jun-95						
36	Lake Albert foreshore, Lake Albert		11.80	Jan-96						
37	Kaldari Cres, Glenfield (deep)	3	40.00	May-96	-3.16	-1.89	1.27	2.32	1.99	-0.33
38	Kaldari Cres, Glenfield (shallow)	3	15.00	May-96	-3.72	-2.55	1.18	1.31	1.16	-0.15
39	Wagga Wagga High School, Turvey Park	4	49.00	May-96	-26.65	-24.20	2.45	2.16	2.10	-0.06
40	Holy Trinity Primary School, Ashmont	3	25.77	Apr-97	-9.71	-8.78	0.93	7.27	7.25	-0.02
41	Crisp Park, Ashmont	2	16.85	Apr-97	DRY	DRY	DRY	DRY	DRY	DRY
42	Karoom Dr reserve, Glenfield	3	12.60	Apr-97	-1.78	-1.40	0.38	3.45	3.21	-0.24
43	Tolland Public School, Tolland	3	9.50*	Jun-07*	-6.51	-5.11	1.40	1.49	1.44	-0.05
44	Mt Austin High School, Tolland (deep)	3	22.54	Apr-97	-13.66	-11.93	1.73	0.46	0.43	-0.03
45	Caloola Hostel, Tatton	7	12.89	Apr-97	NO ACCESS	NO ACCESS	NA	NO ACCESS	NO ACCESS	NA
46	Wagga Wagga Railway Station, Central Wagga		16.02	Apr-97						
47	Cnr Red Hill - Glenfield Rds, Lloyd (deep)	3	16.27	Apr-97	-6.63	-5.40	1.23	0.91	0.83	-0.09
48	Jack Skeers Park, Lake Albert	7	16.05	Apr-97	-8.26	-7.44	0.81	2.09	2.17	0.08
49	Lake Albert Public School, Lake Albert	7	26.93	Apr-97	NO ACCESS	NO ACCESS	NA	NO ACCESS	NO ACCESS	NA
50	Wagga Wagga Christian College, East Wagga	6	19.20	May-97	NO ACCESS	NO ACCESS	NA	NO ACCESS	NO ACCESS	NA
51	Plumpton Rd, Lake Albert	7	16.70	Apr-97	-9.66	-9.22	0.44	5.11	5.11	0.00
52	39 Dobney Ave, Central Wagga	4	12.60	May-97	NO ACCESS	NO ACCESS	NA	NO ACCESS	NO ACCESS	NA
53	Lawn Cemetery, Lake Albert	7	21.50	Jun-97	DRY	-18.96	INC	DRY	0.59	INC
54	Derna Pl, Ashmont	2	3.00	Nov-97	-1.43	-1.18	0.25	8.58	5.45	-3.13
55	1 Clowes Pl, Ashmont		3.00	Nov-97						
56	6 Saxon St, Central Wagga	3	6.00*	Jun-07*	DRY	DRY	DRY	DRY	DRY	DRY
57	7 Mortimer Pl, Central Wagga	3	3.00	Nov-97	-0.37	-0.28	0.09	12.41	13.53	1.12
58	62 Chaston St, Central Wagga	4	3.00	Nov-97	-0.81	-0.81	0.00	3.09	3.12	0.03
59	53-55 Meurant Ave, Central Wagga	4	3.00	Nov-97	DRY	DRY	DEC	DRY	DRY	DRY
60	Opp 16 Cullen Rd, Central Wagga	4	3.00	Nov-97	-0.75	-0.45	0.29	1.84	1.59	-0.25
61	Opp 38 Cullen Rd, Central Wagga	4	3.00	Nov-97	DRY	DRY	DRY	DRY	DRY	DRY
62	59 Gormly Ave, Central Wagga	MA	3.00	Nov-97	DRY	DRY	DRY	DRY	DRY	DRY

Piezometer Number	Piezometer Location	Urban Sub catchment	Piezometer Depth	Date Drilled	Average SWL 21/22	Average SWL 22/23	Change In SWL	Average EC 21/22	Average EC 22/23	Change in EC
63	Emblen Park, Central Wagga	4	3.00	Nov-97	DRY	DRY	DRY	DRY	DRY	DRY
64	11 Sullivan St, Central Wagga	4	3.00	Nov-97	DRY	DRY	DRY	DRY	DRY	DRY
65	40 Meurant Ave, Central Wagga	4	3.00	Nov-97	DRY	DRY	DRY	DRY	DRY	DRY
66	18 Chaston St, Central Wagga	4	3.00	Nov-97	-0.88	-0.72	0.16	2.56	3.08	0.52
67	Meurant Ave, Central Wagga	4	6.00*	Jun-07*	DRY	DRY	DRY	DRY	DRY	DRY
68	11 Lewisham Ave, Central Wagga	4	3.00	Nov-97	DRY	DRY	DRY	DRY	DRY	DRY
69	19 Hardy Ave, Central Wagga	4	3.00	Nov-97	DRY	DRY	DRY	DRY	DRY	DRY
70	33 Gormly Ave, Central Wagga	4	1.70	Nov-97	DRY	DRY	DRY	DRY	DRY	DRY
71	1 Roma St, Central Wagga	4	9.00*	Jun-08*	-3.44	-2.30	1.14	0.86	0.82	-0.04
72	9 Brookong Ave, Central Wagga	MA	3.00	Nov-97	DRY	DRY	DRY	DRY	DRY	DRY
73	Wagga Wagga Base Hospital, Central Wagga	MA	3.00	Nov-97	DRY	DRY	DRY	DRY	DRY	DRY
74	Edward St, Central Wagga	MA	3.00	Nov-97	DRY	DRY	DRY	DRY	DRY	DRY
75	6 Edward St, Central Wagga		3.00	Nov-97						
76	332-334 Edward St, Central Wagga	MA	3.00	Nov-97	DRY	DRY	DRY	DRY	DRY	DRY
77	312 Edward St, Central Wagga		3.00	Nov-97						
78	2 Dobney Ave, Central Wagga	MA	3.00	Nov-97	DRY	DRY	DRY	DRY	DRY	DRY
79	Gormly-Emblen Sts roundabout, Central Wagga	MA	4.40	Sep-98	DRY	DRY	DRY	DRY	DRY	DRY
80	Gormly-Harrison Sts roundabout, Central Wagga	4	6.00	Sep-98	-3.74	-3.29	0.45	2.40	2.29	-0.10
81	48 Docker St, Central Wagga	MA	6.80	Sep-98	-5.17	-3.93	1.24	1.25	1.23	-0.02
82	27 Hardy Ave, Central Wagga	4	2.60	Sep-98	DRY	DRY	DRY	DRY	DRY	DRY
83	57 Hardy Ave, Central Wagga	4	5.20*	Jun-07*	DRY	DRY	DRY	DRY	DRY	DEC
84	2 Sullivan Ave, Central Wagga	4	3.40	Sep-98	-3.82	DRY	DEC	3.19	DRY	INC
85	27 Meurant Ave, Central Wagga	4	4.80*	Sep-98	DRY	DRY	DRY	DRY	DRY	DRY
86	2 Lewisham Ave, Central Wagga	4	7.50	Sep-98	-3.22	-1.81	1.41	0.96	1.13	0.17
87	12 Meurant Ave, Central Wagga	4	5.20	Sep-98	-2.46	-1.47	0.99	2.63	3.19	0.56
88	2 Chaston St, Central Wagga	4	10.00*	May-07*	-2.81	-2.17	0.64	15.98	11.21	-4.77
89	31 Chaston St, Central Wagga	4	5.50	Sep-98	-1.78	-1.38	0.40	8.60	8.05	-0.55
90	51 Chaston St, Central Wagga	4	6.60	Sep-98	-2.99	-4.28	-1.29	7.02	4.72	-2.31
91	Mount St, Koorungal (shallow)	5	10.60	Jun-99	-1.00	-0.44	0.56	1.34	1.41	0.07
92	Mount St, Koorungal (deep)	5	27.70	Jun-99	-0.95	-0.22	0.73	0.77	0.74	-0.04
93	Henwood Park, Koorungal (shallow)	7	13.60	Jun-99	DRY	DRY	DRY	DRY	DRY	DRY

Piezometer Number	Piezometer Location	Urban Sub catchment	Piezometer Depth	Date Drilled	Average SWL 21/22	Average SWL 22/23	Change In SWL	Average EC 21/22	Average EC 22/23	Change in EC
94	Henwood Park, Koorungal (deep)	7	29.90	Jun-99	-10.46	-9.58	0.89	1.15	1.09	-0.06
95	Henwood Park, Koorungal (shallow)	7	7.90	Jun-99	DRY	DRY	DRY	DRY	DRY	DRY
96	Henwood Park, Koorungal (deep)	7	66.00	Jun-99	-18.51	-17.89	0.63	1.20	1.17	-0.02
97	Opp 22 Amaroo St, Koorungal (shallow)	7	9.30	Jul-99	DRY	DRY	DRY	DRY	DRY	DRY
98	Opp 22 Amaroo St, Koorungal (deep)	7	83.00	Jul-99	-38.94	-37.94	1.00	1.39	1.31	-0.08
99	29 Hardy Ave, Central Wagga	4	15.00	Mar-01	-7.66	-9.34	-1.68	1.46	1.49	0.03
100	29 Hardy Ave, Central Wagga	4	31.00	Mar-01	-8.11	-10.77	-2.66	0.62	0.70	0.08
101	29 Hardy Ave, Central Wagga	4	60.00	Mar-01	-8.25	-10.88	-2.63	0.32	0.41	0.08
102	Cnr Meurant St - Lewisham Ave, Central Wagga	4	15.00	Mar-01	-3.40	-4.73	-1.33	10.12	0.70	-9.42
103	Cnr Meurant St - Lewisham Ave, Central Wagga	4	31.50	Mar-01	-5.63	-9.20	-3.57	2.24	2.39	0.15
104	Cnr Meurant St - Lewisham Ave, Central Wagga	4	61.00	Mar-01	-5.88	-8.96	-3.09	9.20	8.74	-0.46
105	Narrung St, Wiradjuri (shallow)	MA	8.09	May-94	DRY	-5.18	INC	DRY	0.23	INC
106	Narrung St, Wiradjuri (deep)	MA	17.88	Mar-99	-9.40	-5.24	4.16	0.33	0.33	0.00
107	Narrung St STW, Wiradjuri (shallow)	MA	8.13	May-94	DRY	-5.00	INC	DRY	0.31	INC
108	Narrung St STW, Wiradjuri (deep)	MA	16.00	Mar-99	-9.00	-5.32	3.69	0.26	0.29	0.03
109	Narrung St STW, Wiradjuri (shallow)	MA	7.80	May-94	-5.55	-6.29	-0.73	NA	NA	NA
110	Narrung St STW, Wiradjuri (deep)	MA	11.49	Mar-99	-5.75	-5.46	0.29	0.30	0.28	-0.02
111	Narrung St STW, Wiradjuri	MA	7.75	May-94	NO ACCESS	NO ACCESS	NA	NO ACCESS	NO ACCESS	NA
112	Narrung St STW, Wiradjuri	MA	6.58	May-94	NO ACCESS	NO ACCESS	NA	NO ACCESS	NO ACCESS	NA
113	Narrung St STW, Wiradjuri (shallow)	MA	7.87	May-94	DRY	-3.81	INC	NA	NA	NA
114	Narrung St STW, Wiradjuri (deep)	MA	16.39	Mar-99	-8.20	-4.96	3.24	0.48	0.46	-0.02
115	Narrung St liquid waste cell, Wiradjuri		10.20	Jan-95						
116	Narrung St liquid waste cell, Wiradjuri	MA	15.78	Mar-99	-9.12	-5.54	3.58	0.98	0.87	-0.12
117	Billagha St, Wiradjuri		6.22	Jan-95						
118	Billagha St, Wiradjuri	MA	15.96	Mar-99	-9.07	-4.83	4.24	NA	NA	NA
119	Narrung St sweeper waste dump, Wiradjuri		9.60	May-94						
120	Narrung St sweeper waste dump, Wiradjuri	MA	16.07	Mar-99	-9.68	-6.09	3.59	1.16	0.99	-0.17
121	Narrung St, Wiradjuri	MA	16.09	Mar-99	-9.29	-5.27	4.02	NA	NA	NA
122	59 Galing Pl, Wiradjuri	MA	19.38	Aug-01	-10.59	-7.35	3.24	0.81	0.75	-0.06
123	33 Galing Pl, Wiradjuri	MA	17.48	Aug-01	-10.55	-6.94	3.61	1.21	1.15	-0.06
124	Wiradjuri Cres, Wiradjuri	MA	16.39	Aug-01	-10.65	-6.79	3.86	1.24	1.21	-0.02

Piezometer Number	Piezometer Location	Urban Sub catchment	Piezometer Depth	Date Drilled	Average SWL 21/22	Average SWL 22/23	Change In SWL	Average EC 21/22	Average EC 22/23	Change in EC
125	Cnr Narrung St - Wiradjuri Reserve, Wiradjuri	MA	18.39	Aug-01	-9.58	-6.61	2.97	0.34	0.35	0.01
126	Billagha St, Wiradjuri	MA	19.13	Aug-01	-10.43	-6.08	4.34	0.41	0.39	-0.02
127	Toll Group, Wiradjuri	MA	13.78	Aug-01	NO ACCESS	NO ACCESS	NO ACCESS	NO ACCESS	NO ACCESS	NO ACCESS
128	9 College Ave, Turvey Park	3	10.20*	May-07*	-6.08	-4.19	1.90	1.66	1.51	-0.15
129	Lakehaven Dr, Lake Albert (shallow)	7	5.91	Oct-92	DRY	DRY	DRY	DRY	DRY	DRY
130	Lakehaven Dr, Lake Albert (deep)	7	15.00*	May-07*	-10.86	-9.25	1.62	7.09	6.51	-0.59
131	Cnr Craft - Graham Sts, Lake Albert (shallow)	7	5.13	Oct-92	DRY	DRY	DRY	DRY	DRY	DRY
132	Cnr Craft - Graham Sts, Lake Albert (deep)	7	12.30	Oct-92	-8.72	-7.56	1.16	3.11	2.89	-0.22
133	Cnr Craft - Bouquet Sts, Lake Albert (shallow)	7	5.84	Oct-92	DRY	DRY	DRY	DRY	DRY	DRY
134	Cnr Craft - Bouquet Sts, Lake Albert (deep)	7	11.96	Oct-92	DRY	DRY	DRY	DRY	DRY	DRY
135	Cnr Main St - Gregadoo Rd, Lake Albert (shallow)	7	5.04	Oct-92	-2.53	-2.20	0.33	NETS	NETS	NA
136	Cnr Main St - Gregadoo Rd, Lake Albert (deep)	7	12.01	Oct-92	DRY	DRY	DRY	DRY	DRY	DRY
137	10 Gregadoo Rd, Lake Albert (shallow)		4.70	Oct-92						
138	10 Gregadoo Rd, Lake Albert (deep)		12.20	Oct-92						
139	Redbank Rd, Lake Albert (shallow)	7	5.87	Oct-92	DRY	DRY	DRY	DRY	DRY	DRY
140	Redbank Rd, Lake Albert (deep)	7	12.40	Oct-92	DRY	DRY	DRY	DRY	DRY	DEC
141	Travelling stock reserve, Bomen		16.04	Jun-00						
142	Red Hill Rd, Glenfield	3	25.60	Apr-02	-18.20	-17.22	0.98	NA	NA	NA
143	6930 Olympic Hwy, Kapooka	2	42.00	Apr-02	DRY	DRY	DRY	DRY	DRY	DRY
144	Cnr Narrung - Billagha Sts, Wiradjuri	MA	15.50	Nov-06	-9.23	-5.26	3.97	1.17	1.17	0.00
145	Wiradjuri Reserve, Wiradjuri	MA	14.00	Nov-06	-5.20	-4.16	1.04	0.24	0.25	0.01
146	Orana Pl, Wiradjuri	MA	19.50	Nov-06	-10.75	-6.83	3.92	1.28	1.20	-0.08
147	South Campus, Turvey Park	3	3.30	unknown	-1.22	-0.25	0.97	16.50	21.55	5.05
148	Bomen Industrial Sewage Treatment Facility	0	13.20	unknown	-5.18	-5.18	0.00	1.82	1.82	0.00
149	BISTF, Bomen	0	14.20	unknown	0.18	0.18	0.00	2.05	2.05	0.00
150	BISTF, Bomen	0	13.10	unknown	-4.42	-4.42	0.00	1.32	1.32	0.00
151	BISTF, Bomen	0	unknown	unknown	-1.44	-1.44	0.00	3.32	3.32	0.00
152	1 Bedervale St, Bourkelands	3	14.70	Jun-07	-11.45	-6.60	4.85	0.75	0.79	0.05
153	Cnr Burgan - Indigo Dr, Glenoak	7	15.00	May-07	-12.98	-10.65	2.33	5.58	5.14	-0.44
154	19 Mirbelia Dr, Glenoak	7	13.00	Jun-07	-2.17	-1.23	0.94	0.43	0.44	0.00
155	Cnr Indigo Dr - Holbrook Rd, Springvale	7	10.20	Jun-07	DRY	-7.06	INC	DRY	NA	NA

Piezometer Number	Piezometer Location	Urban Sub catchment	Piezometer Depth	Date Drilled	Average SWL 21/22	Average SWL 22/23	Change In SWL	Average EC 21/22	Average EC 22/23	Change in EC
156	Cnr Mirbelia Dr - Holbrook Rd, Springvale	7	15.20	Jun-07	DRY	DRY	DRY	DRY	DRY	DRY
157	Holbrook Rd, Springvale	7	15.00	May-07	-12.15	-1.90	10.25	3.91	3.43	-0.49
158	Stringybark Pl, Springvale	7	15.00	Jun-07	DRY	DRY	DRY	DRY	DRY	DRY
159	6 Yarran Pl, Springvale	7	10.00	May-07	-6.23	-4.48	1.75	0.42	0.40	-0.01
160	3 Mallee Rd, Springvale	7	15.30	Jun-07	DRY	DRY	DRY	DRY	DRY	DRY
161	1 Lloyd Rd, Springvale	7	8.60	May-07	-3.92	-2.40	1.52	3.36	2.69	-0.67
162	39 Gregadoo Rd, Lake Albert	7	9.00	May-07	-7.68	-5.56	2.12	4.14	4.14	0.00
163	Stringybark Creek Wetland, Gregadoo Rd, L.A	7	8.50	unknown	DRY	DRY	DRY	DRY	DRY	DRY
164	Adjacent to Murrumbidgee River, Narrung Street	MA	20.00	Dec-07	-8.44	-5.96	2.48	NA	NA	NA
165	Travers St at entrance of Narrung St, Wiradjuri	MA	13.00	Dec-07	-8.57	-6.73	1.84	NA	NA	NA
166	Travers St behind 10 Incarnie Cres, Wiradjuri	MA	14.80	Dec-07	DRY	DRY	DRY	DRY	DRY	DRY
167	56 Cummins Road, Lake Albert	8	11.00	Jun-08	DRY	DRY	DRY	DRY	DRY	DRY
168	378 Bakers Ln., Lake Albert	8	13.50	Jun-08	-6.84	-4.84	2.00	2.21	2.21	0.00
169	334 Bakers Ln., Lake Albert	8	13.50	Jun-08	-7.73	-6.19	1.53	9.05	8.64	-0.40
170	1 Mitchell Road, Lake Albert	7	13.00	Jun-08	NO ACCESS	NO ACCESS	NA	NO ACCESS	NO ACCESS	NA
171	124-156 Copland street, East Wagga Wagga	MA	8.50	Jun-08	DRY	DRY	DRY	DRY	DRY	DRY
172	Rear of 5-6 Kenny Place, Tolland		9.50	Jun-08						
173	Rear of 28 Bandera Avenue, Glenfield Park	3	8.00	Jun-08	DRY	DRY	DRY	DRY	DRY	DRY
174	Rear of 48 Paldi Cres, Glenfield Park	2	14.00	Jun-08	-7.06	-6.56	0.50	5.14	5.05	-0.09
175	Rear of 12 Birri Place, Glenfield Park	2	15.00	Jun-08	-6.88	-6.02	0.87	1.52	1.38	-0.14
176	39 Meurant Avenue (on Emblem Street)	4	9.00	Jun-08	-3.59	DRY	DEC	10.76	DRY	DEC
177	47 Gormly Avenue (on Emblem St)	MA	5.50	Jun-08	DRY	DRY	DRY	DRY	DRY	DRY
178	Anderson Oval, Tolland	3	7.30	Jun-10	-6.06	-3.07	2.99	0.90	0.88	-0.02
179	Anderson Oval, Tolland	3	7.50	Jun-10	-0.24	-0.03	0.21	2.13	2.11	-0.03
180	Plumpton Rd, Tatton	7	6.80	Jun-10	DRY	DRY	DRY	DRY	DRY	DRY
181	Kimberley Dr, Tatton	7	10.00	Jun-10	-9.18	-8.22	0.95	5.13	5.05	-0.08
182	2 Stirling Blvd, Tatton	7	12.00	Jun-10	-4.35	-3.15	1.19	1.30	1.28	-0.02
183	46 Stirling Blvd, Tatton	7	11.70	Jun-10	DRY	DRY	DRY	DRY	DRY	DRY
184	72 Stirling Blvd, Tatton	7	5.80	Jun-10	DRY	DRY	DRY	DRY	DRY	DRY
185	43A Berembée St, Bourkelands	3	6.30	Jun-10	DRY	DRY	DRY	DRY	DRY	DRY
186	Wilgoma St, Bourkelands	3	8.60	Jun-10	-2.85	-1.79	1.06	0.70	0.72	0.02

Piezometer Number	Piezometer Location	Urban Sub catchment	Piezometer Depth	Date Drilled	Average SWL 21/22	Average SWL 22/23	Change In SWL	Average EC 21/22	Average EC 22/23	Change in EC
187	Yarrowah Cres, Bourkelands	3	9.00	Jun-10	-4.58	-2.80	1.78	0.59	0.56	-0.03
188	Audervale Cl, Bourkelands	3	5.00	Jun-10	DRY	-2.29	INC	DRY	NA	NA
189	46 Riverview Dr, Riverview	1	5.70	Jun-10	-3.35	-2.09	1.25	1.32	1.29	-0.03
190	Roach Rd, Riverview	1	9.20	Jun-10	-6.42	-3.70	2.73	5.12	5.12	0.00
191	110 Riverview Dr, Riverview	1	5.00	Jun-10	-2.81	-2.62	0.19	0.38	0.35	-0.02
192	Exhibition Centre, East Wagga Wagga	6	10.50	Jun-10	DRY	DRY	DRY	DRY	DRY	DRY
193	Koorungal Rd, Koorungal	6	8.00	Jun-10	DRY	DRY	DRY	DRY	DRY	DRY
194	Copeland St, East Wagga Wagga		12.00	Jun-10						
195	Macintosh Place, Koorungal	5	6.00	Jun-10	DRY	DRY	DRY	DRY	DRY	DRY
196	Showground, Central Wagga	4	14.60	Jun-10	-3.57	-2.42	1.15	1.28	1.30	0.02
197	South west of quarry, Lloyd	3	25.00	Jul-12	DRY	DRY	DRY	DRY	DRY	DRY
198	Adjacent creek bed, Lloyd	3	25.00	Jul-12	DRY	DRY	DRY	DRY	DRY	DRY
199	West of farm house, Lloyd	2	25.00	Jul-12	-24.60	-24.56	0.04	NETS	NETS	NETS
200	Transmission line, Lloyd	2	25.00	Jul-12	-24.80	-24.80	0.00	NETS	NETS	NETS
201	Wiradjuri track, Silverlite Reserve, Lloyd	2	25.00	Jul-12	-24.47	-24.49	-0.03	NETS	NETS	NETS
202	Cnr Yentoo Dr - Red Hill Rd, Lloyd	2	25.00	Jul-12	-16.43	-15.40	1.03	14.42	15.07	0.65
203	West of cnr Dalman Pk - Red Hill Rd, Lloyd	3	25.00	Jul-12	-20.44	-19.45	0.98	15.34	16.08	0.74
204	East of cnr Dalman Pk - Red Hill Rd, Lloyd	3	25.00	Jul-12	-17.22	-17.01	0.20	5.27	7.47	2.20
205	Rear Barton Ave (north), Lloyd	3	25.00	Jul-12	-14.99	-14.10	0.89	9.61	9.77	0.17
206	Rear Barton Ave (south), Lloyd	3	25.00	Jul-12	-11.81	-10.93	0.88	0.47	0.19	-0.27
207	Quarry entrance, Lloyd	3	24.00	Jul-12	DRY	DRY	DRY	DRY	DRY	DRY
208	Rear 33 Barrima Dr, Glenfield Park	3	7.50	Jun-13	-1.48	-0.73	0.75	0.79	0.68	-0.11
209	4 Mima St, Glenfield Park	3	5.00	Jun-13	-2.37	-1.19	1.18	1.36	1.36	0.00
210	Duke of Kent Oval, Central Wagga	MA	8.75	Jun-13	DRY	DRY	DRY	DRY	DRY	DRY
211	63 Gormly Ave, Central Wagga	MA	48.8	Unknown	-8.13	-7.81	0.32	0.42	0.43	0.01
1/1	Emblen Park, Central Wagga	4	15.00	Unknown	-3.41	-7.60	-4.19	2.17	2.18	0.02
1/2	Emblen Park, Central Wagga	4	30	Unknown	-3.62	-15.93	-12.31	1.74	1.82	0.08
1/3	Emblen Park, Central Wagga	4	60.00	Unknown	-3.38	-19.62	-16.24	1.35	1.42	0.07
H1	Cnr Clark - Mate Sts, Humula	T	4.50	Unknown	-1.93	-0.80	1.13	2.09	2.03	-0.06
H2	Cnr Boundary Rd - Mount St, Humula	T	4.20	Unknown	-3.46	-1.38	2.08	0.40	0.38	-0.02
T1	26 Centenary Ave, Tarcutta	T	unknown	Unknown	-9.18	-4.05	5.13	1.19	1.14	-0.05

Piezometer Number	Piezometer Location	Urban Sub catchment	Piezometer Depth	Date Drilled	Average SWL 21/22	Average SWL 22/23	Change In SWL	Average EC 21/22	Average EC 22/23	Change in EC
T2	Sydney St, Tarcutta		unknown	Unknown						
T3	Cnr Cynthia - Young Sts, Tarcutta	T	16.00	Unknown	-15.40	-14.51	0.90	NETS	NETS	NETS
T4	Cnr Argent - Spring Sts, Tarcutta	T	19.50	Unknown	DRY	DRY	DRY	DRY	DRY	DRY
T5	Sydney St, Tarcutta	T	5.75	Unknown	-4.14	-2.90	1.24	2.78	2.30	-0.48
T6	Breaden Sports Ground, Tarcutta	T	4.15	Unknown	-1.56	-0.69	0.87	1.01	0.92	-0.08
T7	Cnr Bent & Sydney St, Tarcutta	T	8.00	Jun-14	-6.23	-4.74	1.50	0.74	0.52	-0.22

**APPENDIX D:
STANDING WATER LEVELS - HISTORICAL
HYDROGRAPHS**

