



NOT TO SCALE

DESIGNED	O.CONDON	DATE	10.12.2008
DATUM	AHD	DRAWN BY	O.CONDON
		DATE	10.12.2008

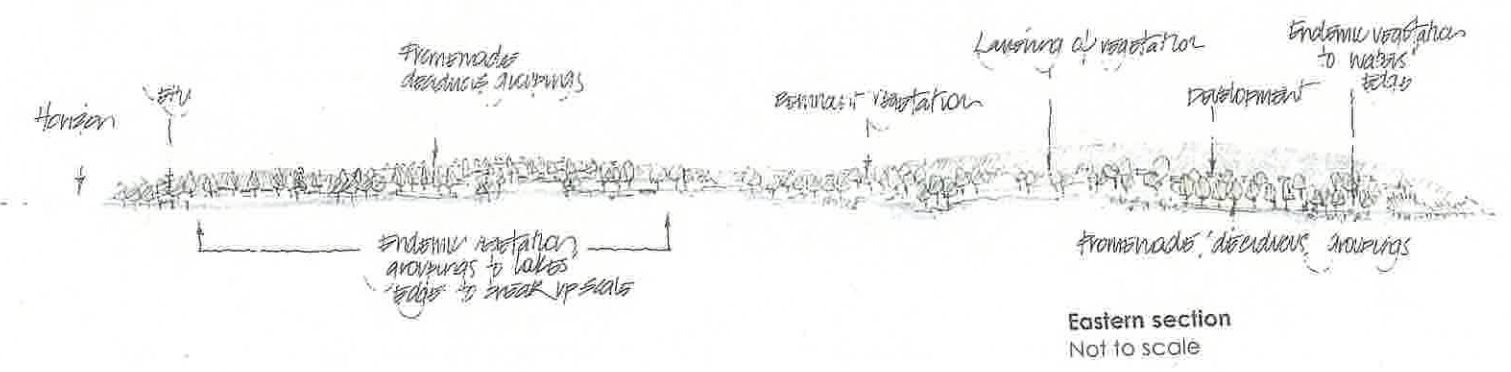
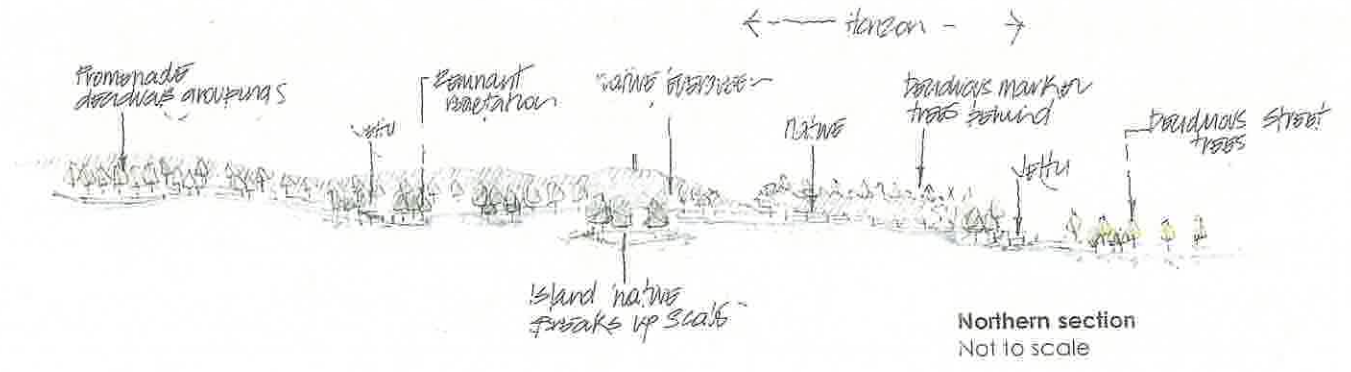
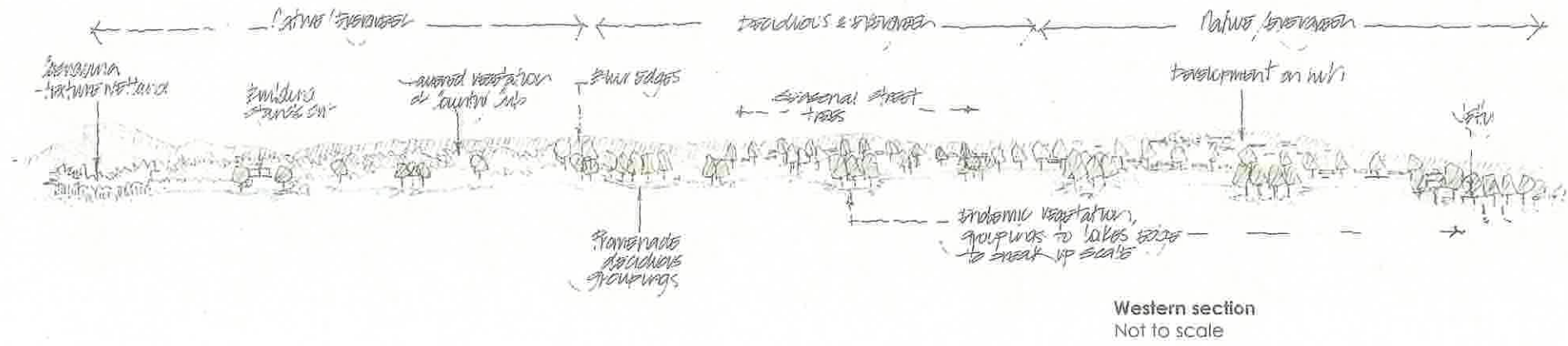


PROJECT

**LAKE ALBERT**  
Community Facilities  
Concept plan

PLAN REGISTRATION SHEET NUMBER  
**P43**  
**ISSUE A**





L  
Albert  
k  
e  
Wagga Wagga

Client:  
Wagga Wagga  
City Council

alexandra dalglish  
LANDSCAPE ARCHITECTS

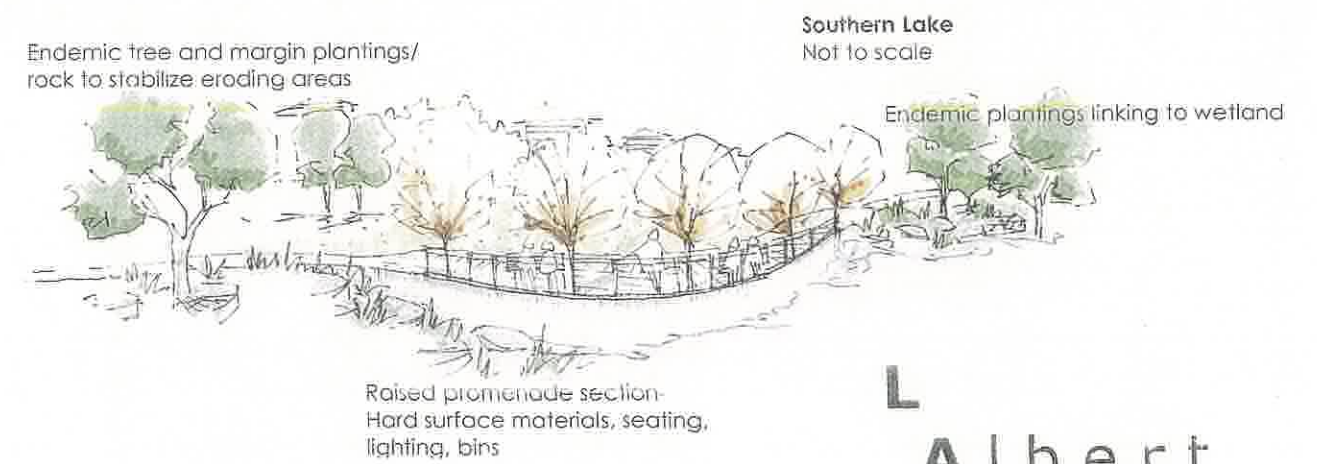
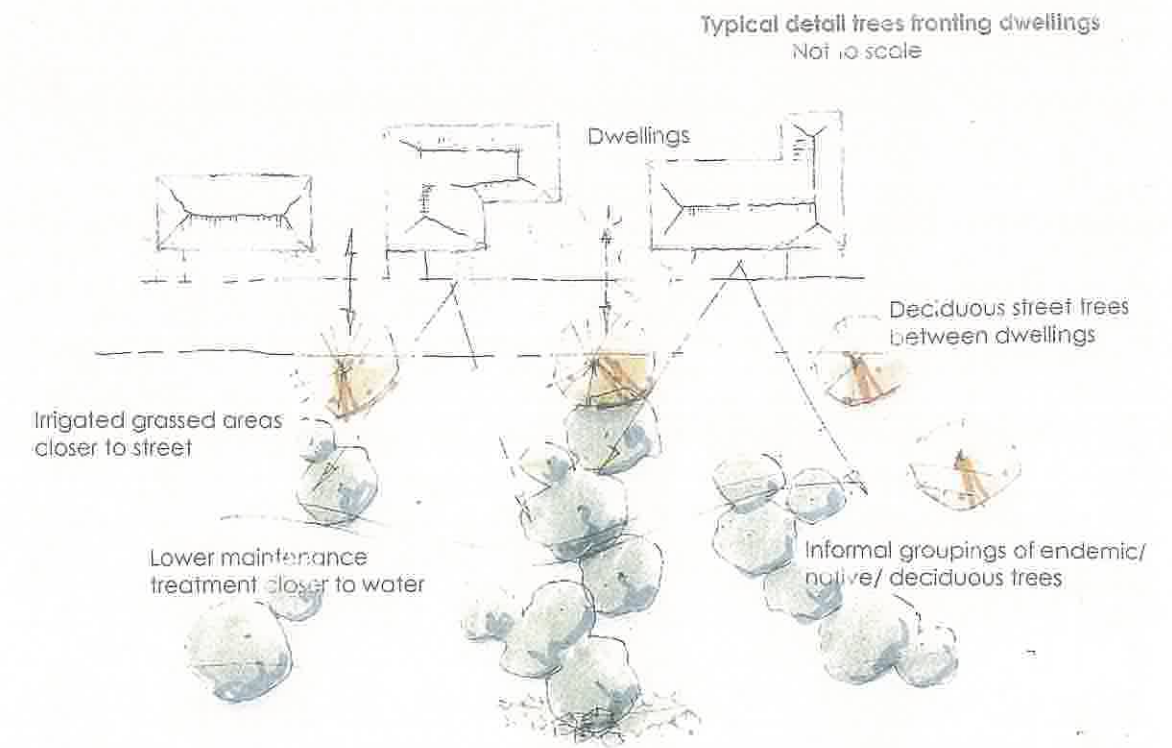
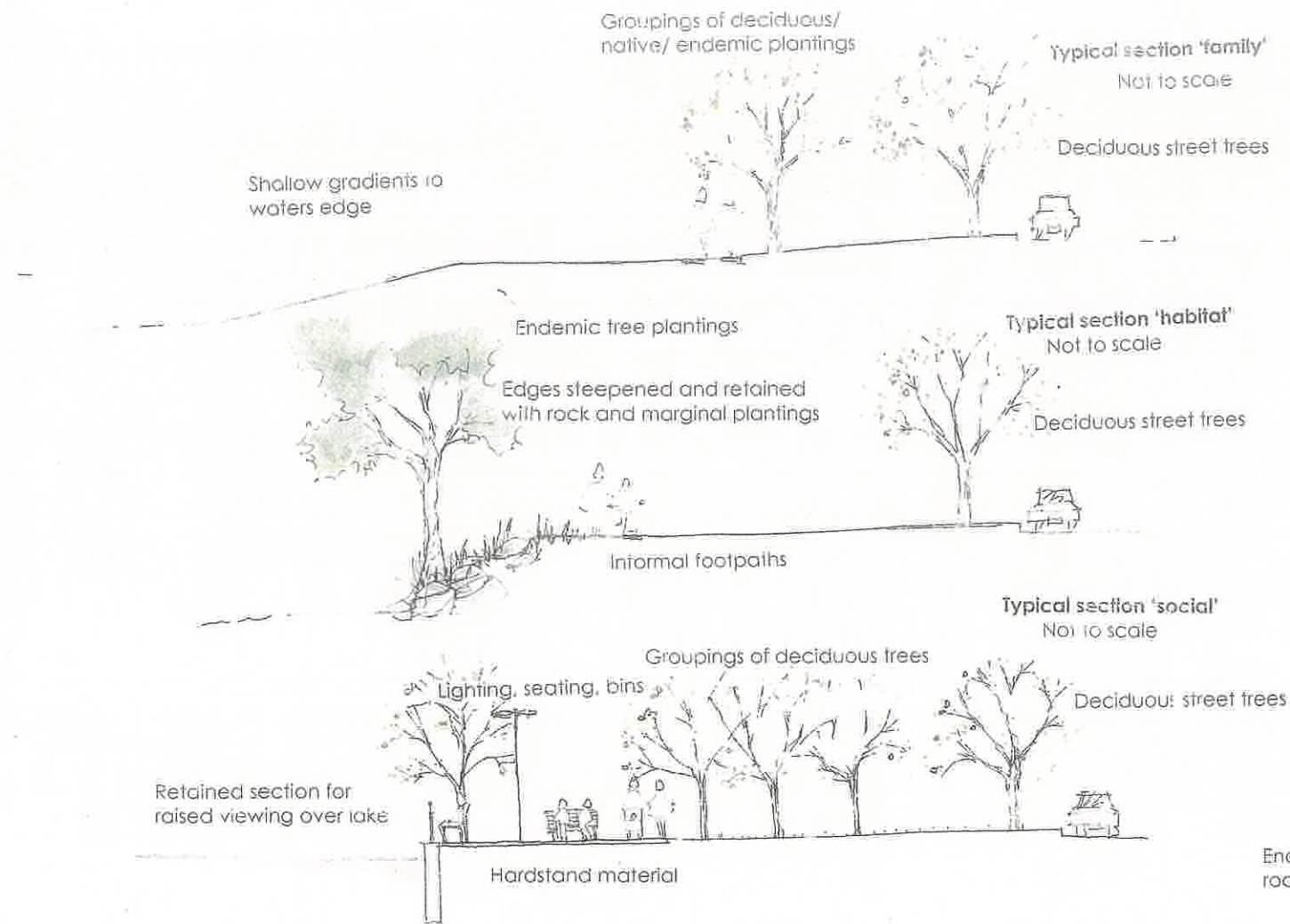
Project:  
Lake Albert  
Landscape masterplan

landscape architect  
Cate M. Young  
NSW 2694  
20 42 8472 2004  
30 42 8748 32

Drawing title:  
Sections of vegetation groupings

Drawing No. LA-L04 (4/5)    Drawn: AD    Scale: NTS

DRAFT



L  
A l b e r t  
k  
e  
Wagga Wagga

Client:  
Wagga Wagga  
City Council

alexandra jalghish  
LA/01 AA LA Grad Dip Env Law

Project:  
Lake Albert  
Landscape masterplan

for landscape art 1601  
Civ. Eng. - CIVIL  
NSW 284  
12 88 847355/294  
001 62 67497 256

Drawing title:  
Sketches/ typical sections

Drawing No.  
LA-L04 (5/5)

Drawn:  
AD

Scale:  
NTS

DRAFT



Issues discussed at meeting

Landscape

Visual landscape; the view from and the view of:  
 Dwellings opposite Lake  
 Users along the Lake  
 Opposite foreshore  
 Broader view catchment  
 Views from open space/ roads

Site

Wind from the west  
 Wave action around the lake

Vegetation

Replacement for willows:  
 Native/ endemic/ deciduous  
 Wet filter/ marginal plantings  
 Lawn and alternatives to lawn  
 Maintenance zones  
 Weeds in particular onion weed and on going maintenance  
 Habitat quality fish breeding north and south  
 Habitat for birds and aquatic species

Recreation

Passive and active  
 Walking tracks  
 Cyclists (east side part of bike plan)  
 Skiing drop off/ take off zone  
 Pontoon boat club  
 Swimming east west (stlm and northern end)  
 4 knot zones (south and north)  
 Fishing from anywhere  
 Boat ramps (Apex park ramp needs maintenance)  
 Remote control sail boats

Other

Seeds not in shade (current)  
 Rubbish/ dog poo  
 Position of BarBQ shed and use  
 Trees as shade not structures  
 Are walls necessary



Area reclaimed - silted up  
 Native regeneration of species:  
 Euc. camaldulensis  
 Callistemon sp.  
 Juncus sp.  
 Chrysosporium sp.  
 Poa sp.  
 Eleocharis sp.

Client: Wagga Wagga City Council  
 Project: Lake Albert Landscape masterplan  
 Drawing title: Landscape analysis  
 Drawing No: LA-101 (1)  
 Drawn: AD  
 Scale: 1:2000 (A1)  
 Date: 11/08/2011

DRAFT



**The landscape masterplan for Lake Albert aims to**

- Consult community interest groups and individuals as part of the design process
- Link to the concurrent Lake Strategy by Tomorrow Today Strategic Engineering Planning and previous Plan of Management for the southern area of the Lake.
- Recognise the various functions and amenity of the lake; recreational (passive and active/ water based and land based), and stormwater management.
- Propose various vegetation strategies for the lakeshore that are sympathetic to the setting and views and considerate of management regimes.
- Define varied edge treatments which relate directly to use: family, habitat and social. Refer to drawing LA-L05
- Formalise walking tracks that allow for varied experiences around the Lake and link treatments to the above classification.
- Clarify the walking track fronting the County Club. Refer to drawing LA-L03

**Key**

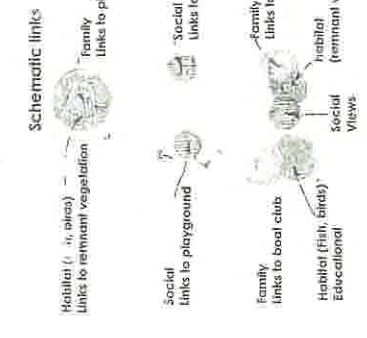
- Existing vegetation retained
- Stabilised earth for 'habitat' areas and connections formal (concrete) paths to family and social areas Refer to LA-L05 for clarification
- Retaining wall/ hard surface To promote 'social' areas
- Irrigated grass areas
- Lower maintenance grass areas including alternative 'meadow' grass treatments, such as:  
Danthonia sp. (Wallaby grass)  
Microloena sp. (Weeping grass)  
Bracteantha sp. (Eventuating daisy)  
Poa sp. (Tussock)
- Seeds, lighting, bins
- Boardwalk/ jelly segments:  
Timber and or recycled plastic decking

- Wet filter/ marginal planting zones:  
Includes rock to stabilize slope and endemic/ native plantings:  
Cyperus exaltus  
Carex appressa  
Junco vittatus  
Baumea ariculata  
Schoenoplectus validus  
Lomatium longifolium  
Dianella revoluta

- Waters edge (endemic):  
Eucalyptus camaldulensis (River Red Gum)  
Brachychiton populineus (Kurrajong)

- Up slope (native):  
Acacia ilesohylla (Flinders Ranges Wallie)  
Acacia baileyana Purpureus (Purple leaved form)  
Coccoloba Wallie  
Eucalyptus scoparia (Willow Gum)  
Eucalyptus torquata (Coral Gum)

- Proposed deciduous trees:  
Populus simonii Fastigiata (Semi evergreen poplar)  
Betula pendula Purpurea (Purple form Silver Birch)  
Acer forestianii Autumn Blaze (Maple)  
Quercus palustris (Pin oak)



**Family areas include:**  
Shallow gradients to waters edge  
Irrigated grass- open grassed areas  
Deciduous and endemic plantings  
Formalised paths  
Larger shade trees  
Picnic tables, seating, BBQ, bins

**Habitat areas include:**  
Staggered waters edge with plantings and rocks  
Endemic vegetation  
Alternatives to lawn- native grass/ gravel

**Social areas include:**  
Hardstand interface to water- flat retained sections  
Hardsurface materials  
Groupings of deciduous trees  
Seating, lighting, bins

**Promenade raised area:**  
Seating, deciduous trees  
Refer LA-L05

**Open family area- irrigated grass:**  
Deciduous and endemic shade planting

**Promenade raised area:**  
Seating, deciduous trees  
Refer LA-L05

**Remain remnant vegetation and underplant with associated understorey:**  
Possible future wetland area

**Remove willows and exotic vegetation and replant with endemic vegetation:**  
Possible future 'first flush' sediment control set back from Lake

**L A I B E R T**  
**K E**

**Wagga Wagga**

Client: Wagga Wagga City Council  
Project: Lake Albert Landscape masterplan  
Drawing title: Landscape masterplan  
Drawing No.: LA-L03 (2/5)  
Scale: A3  
Drawn: AD  
Date: 11/06/16

DR APT



**Key**

- High water mark (191.50)
- Existing contour (interval .5 metre)
- Stabilised earth paths (1.1m)
- Boardwalk section (2.4m)
- Drainage under paths
- Fencing (wire 1.2m or 2.4m)  
Height to be determined depending on position along fairways
- Existing trees (retained)
- Proposed endemic trees:  
Eucalyptus camadulensis  
Casuarina cunninghamiana
- Aquatic plants and rock to stabilize slope:  
Eleocharis sp.  
Juncus sp.  
Cyperus exallus
- Mounding and screening vegetation:  
Grevillea Moonlight  
Eremophila nivea  
Lepidospermum Burgundy  
Hakea Pink Lace  
Hardenbergia violacea



Client: **Wagga Wagga City Council**

Project: **Lake Albert Landscape masterplan**

Drawing title: **Country Club connection**

Drawing No. **LA-L03 (3/)** Drawn: **AD** Scale: **1:200 (A1)**

**DRAFT**