

## **10.0 Appendices**

Appendix A: Community consultation

Community consultation notes

Collated surveys (2006) and stories/ memories from the Civic Trusts report on the Wollundry Lagoon (1999)

Appendix B: Lists of fauna and flora of entire Lagoon (not necessarily just the VMG)

Appendix C: Tree report by Wade Ryan Arborist, mapping and additional lists of trees from both the VMG and the northern side of the lagoon.

Appendix D: Lists of plants used in Interwar Gardens and list of current plants in the Gardens

Appendix E: Asset Inventory of the Gardens (including memorials as already included within the body of the document)

Appendix F: Elements that were once in the garden and have been removed

**Appendix A  
Community Consultation**

**VICTORY MEMORIAL GARDENS - plan of management**

A Draft Plan of Management is currently being prepared by Wagga Wagga City Council for the Victory Memorial Gardens. The land subject to the plan is the parkland of the Victory Memorial Gardens, Bounded by the Wollundry Lagoon, Ivan Jack Drive, Morrow Street and Bayilis Street. This park is Crown Recreation Reserve managed by Council and is zoned for Recreation under Councils development Control Plan.

A public meeting for the discussion of relevant issues is to be held on the main lawn of the Victory Memorial Gardens, in front of the stage at 2:00pm on Saturday 27th May 2006

Attendance by interested parties is encouraged so that all issues relating to the use of the land may be considered in the preparation of the Draft Plan

Enquiries should be directed to John Duffy, Manager Recreation Services, Wagga Wagga City Council on 02 69269610.

Phillip Perram  
General Manager  
PO Box 20  
Wagga Wagga

The Daily Advertiser – One insertion Wednesday 17th May 2006 and one insertion on Saturday 20th May 2006. Riverina Leader – One insertion Wednesday 17th May 2006

At the community meeting, a survey was filled in by those that attended (approx 20) Approximately another 10 respondents filled in surveys at informal talks with users of the gardens on 3rd and 16th June, 2006.

## **Survey Victory Memorial Gardens Wagga Wagga**

**Is the Victory Memorial Gardens the most significant park in Wagga Wagga?  
If yes why- if no why?**

The most significant park is the park where you live and use.  
It's the most central to the city. Botanic gardens equally as important.  
It used to be before lack of maintenance intervened. With thought and care hopefully it will be again. Bring back the rotunda and boat shed, limited boating (controlled) on the lagoon.  
Yes for its own reasons People come to feed the ducks and be near the water.  
It is a very significant area of passive recreation space but it is no more significant than the Botanic Gardens.  
Yes it is. I got my wedding photos done here.  
Yes- I bring my kids here every week and we play and feed the ducks.  
No- the botanic gardens are better.

**Does the setting of the gardens next to the lagoon have any bearing on your thoughts?**

Yes. It is intrinsic to the park ALL users walk towards the lagoon. Water attracts.  
The lagoon is beautiful and often maltreated.  
Absolutely impertinent to the whole complex.  
Yes the lagoon is the main feature and should be cleaned up to reflect this.  
Yes but no more important than say its location near the CBD and the council precinct.  
It is the only thing that I come to look at.  
Yes- but the lagoon needs to be fixed.

**What are the best things about the park?**

Lovely shady trees and all the families that use it.  
Playground and ducks.  
Lagoon.  
It's a park for all people  
Returned service sites and purpose.  
Location  
Memorials, trees, venue facility  
The entertainment at 3am  
The ducks, lawn and big old trees  
The deciduous trees  
Closeness to the CBD  
Use by tourists  
Feeding ducks by children  
The similarity of this park to an old English style park  
Focal point to the city  
All the trees and the playground

### **What are the worst things about the park?**

Not signed as a Memorial Park.

Lack of toilet facilities.

Memorials everywhere.

Lack of maintenance and continued vandalism

Wouldn't a resident caretaker be as economical as constant replacement

No toilets

Night entertainment (pubs etc.) should be levied to provide maintain toilet facilities and clean ups.

Toilets hard to find.

Litter, filthy lagoon

Too dark at nights

Drunks

Lack of safety

Bland- no flowers

Bland and boring

The 'claim' of the RSL that this is a 'memorial'. It is a different public recreation reserve (dedication) and should not be restricted to any one group when use is being discussed.

Limited lighting

The fountain

## **Community meeting notes**

**Date:** 27th May 2006

**Time:** 2pm – 4pm

**Venue:** Victory Memorial Gardens

**Attendance:** Approximately 20 members from the community attended.

Comments arising from the meeting categorised into general themes.

### **Wagga City Council:**

'Does the WWCC have a different agenda for the park'

'Will the council listen to the desires of the community'

'A historic building has been vandalised, will the council take any notice'

'Include the entire park and the lagoon in the plan of management. All three areas should be intertwined. Don't duplicate the information'

### **General:**

'The park is part of the city and a focal point of the main street. It is an important part of the Wagga environment. Kerr designed it as a focal point' (Local male resident)

'The botanic gardens are more important. However the VMG are special because they are a memorial and victory gardens' (Local female resident)

'The park intertwines many areas and is a focal point' (local male resident)

The park is crown land. Land for everyone'

'The original character of the park should be restored' (Local male resident)

'The stage is an important feature in the park and should remain' (RSL representative)

'Reinstate the boathouse'

'The rotunda should be returned to the park. Every town has a local band'

### **Memorials:**

'Gates may need to be installed to keep undesirable people out during the night' (Local male resident)

'We are concerned about gates on the memorial' (RSL representative)

'The memorials are dedicated and can not be moved or re orientated even to face the ANZAC Avenue' (RSL representative)

'The area near the cenotaph does not cope with the numbers of people at important times. The new fountain has opened up the site. Why are the roses going to be planted' (Local male resident)

The cenotaph can not be seen from the street or from within the park due to the size of the pencil pines' (RSL resident and Local female resident)

### **Toilets:**

'The toilets across the road are too far away'

'With children its dangerous to cross the busy road to the toilets'

'There is a need for toilets in the park'

'Signage is necessary to locate toilets'

People get confused and think the maintenance sheds are the toilets'

'If there was a toilet people would be less likely to use the memorial as a urinal'

**User groups:**

'The river men who live on the banks of the Murrumbidgee use the park as a meeting place' (Local female resident)

'Respect what the park was meant for. Open the park to different user groups, not political rallies though' (RSL representative)

'No rallies, the park is a memorial not a gathering place' (RSL representative)

'We attended the peace rallies which were conducted in a respectful manner. The day was hot in February and the shade trees offered relief from the sun. The Wollundry park would have been too hot. The prominence of the park made it an ideal site' (Local female resident)

'We use the park as a meeting place to pray for the city' (Local female resident)

'If groups want to use the park could we acknowledge the RSL like the Wiradjuri People are acknowledged at the beginning of gatherings' (Local male resident)

**Trees:**

'Concern about tree removal or any change to the park at all' (RSL representative)

'The dead trees need to be replaced'' (RSL representative)

'Make the trees which are planted are mature and big enough to tolerate vandals. Trees are valuable.' (Local male resident)

'Replace the Anzac avenue of trees with mature sized species'

'The RSL has no answer regarding changing the species of tree for the Anzac avenue to something else. As long as it is an upright tree. The main issue is to keep the memory alive and to improve on what is here already.'

'We are lucky to have this space with shady trees thank goodness our ancestors planted them' (Local female resident)

'Maybe the park should include the newly discovered Woolomii Pine to commemorate its discovery' (Local female resident)

'The Woolomii Pine is too big and would not be suitable in the park' (Local female resident)

'Significant tree planting to the back of the stage to replace the ones which were lost in a storm' (Local female resident)

'Remove the poplars in front of the Cenotaph'

**Plantings:**

'The feature pansy gardens at the front of the gardens are often vandalised are they necessary''

'Along the banks of the lagoon native grasses should be planted as the grass does not grow' (Local male resident)

'Perimeter planting is blocking the views in and out of the park, they should be changed' (Local female resident)

**Theme gardens:**

'The theme gardens are an undesirable area, the hedges should be removed'

'Never give into vandals, don't remove the hedges maybe trim them a little'

'A better idea would be to install lights to the area'

**Lagoon:**

'Is the lagoon part of the management plan, if not then when will the plan of management for the lagoon be undertaken'

'The lagoon needs to be viewed as a lagoon or a lake not merely as a drain'

'The lagoon must be part of the plan of management for the park'

'The water quality of the lagoon is affected by the runoff from the park'

'A gross pollutant trap or similar should be installed up near Forsyth street to keep the rubbish out of the lagoon'

'Trees around the lagoon have had their limbs removed and the branches are now floating in the lagoon'

'Leaves are blown in to the lagoon. Maintenance techniques need to be addressed'

'Shopping trolleys are constantly floating in the lagoon'

**Signage:**

'The park needs relevant signage or plaques to tell the history of the park'

'There is a need for signage around the memorial indicating that the place is a respected holy place.' (Local male resident)

'Signage around the park is old and out of date with a previous town clerk name on the sign'

'Signage to deter alcohol consumption faces into the gardens and not the street where the people are coming from. The sign is small and hidden by bushes' (Local female resident)

'Ensure signage is sturdy and able to withstand vandalism'

'Signage is necessary along the Anzac avenue to direct people to the memorials and indicate what they are there for'

**Safety:**

'The park is not safe at night'

'Lighting of the park has deterred some of the antisocial behaviour. We live close by and have noticed an improvement with the installation of lights' (Local female resident)

'Put lighting up high so as not be vandalised'

'The lighting should extend around the paths on the other side of the park, the trees should be pruned to open the pathway up and make it feel safer'

'Hoses have been left out which are possible trip points'

'Security services are not doing their job. They don't check the assets of the park or do anything about undesirable people'

'Vandalism is not reported by the police and is not recorded as part of their statistics'

'The police do not enforce the alcohol free zone'

'Would it be worth paying a security guard to be in the park physically at night'

**Playground:**

'The RSL has no problems with the playground'

# SOURCE: MANAGING WOUNDARY LAGOON & ITS PERIMETER

## BY CIVIC TRUST, WAGGA WAGGA

Question 3: What would you like to see changed about the Lagoon and its adjoining parklands?

- 39x remove rubbish from banks and water
- 17x remove exotic plants and trees
- 16x clean the water/improve water quality
- 12x connect walkways from Simmons street behind Johnston street to Ivan Jack Drive

- 10x more benches and tables (BBQ facilities)
- 9x re-think Peace Walk monuments - scale, size and number
- 9x nothing

9x add controlled plantings of suitable native plants and trees to provide habitats for native birds and aquatic animals.

- 7x better landscaping, more trees, gardens and lawns
- 6x remove water lilies

- 6x no cars on grassy areas
- 6x make a management plan, include community consultation.
- 6x deepen the Lagoon, especially at western end
- 6x better pathways

5x make Lagoon 'live' running water/water circulation

- 5x control domestic pets in park
- 5x better playground
- 4x remove geese

4x remove fallen timber from banks and water

- 4x install more lighting
- 4x clean it up but don't change it
- 3x remove plaques and monuments to another location

3x remove carp

3x install larger/more rubbish bins

3x fence off playground from Lagoon water

2x seating accessible to and safe for older people

2x plant more suitable trees and shrubs especially on Esplanade side

2x no heating coil in Lagoon

2x better litter screens

2x add ducks and geese

1x replace poplars on Anzac Ave

1x no more landscaping, keep it natural

1x more places from which children can feed the ducks

1x install 'No Fishing' signs

1x create greater cohesion between waterway and parks

1x better nesting for geese (and ducks?)

1x add professional landscaping

Generally suggestions for change given as answers to question 3 were suggested solutions to the problems identified in question 2.

### Question 4: What favourite anecdotes about the Lagoon and its surrounding parks do you know?

No.01 "Olympic swimmer Neil Ryan trained in the Lagoon (probably in the early '50s). I recollect Black Swans - these are sadly missed by residents of Wagga Wagga."

No.02 "The DJ at 2WG (many years ago telling the young people, via the radio, to stop smoking and get back to school. He could see them from his window."

No.03 "A childhood along the 'Gaiolon', with ducks, dogs, bikes, fireworks and tadpoling."

No.05 "During the war in the children's session at 2WG we had a rubber duck called Siegfried who lived on the Lagoon, but used to fly in to squeak messages to the children. When the Siegfried Line was in the news it was inappropriate to have a duck of that name so he flew away."

"My father, Eric Roberts, put the first pair of black swans in the Lagoon. They were very quickly stolen or flew away. He purchased another pair and they lived in the Lagoon, bred and reared their signets (they nested in the 2WG side, not far down from the bridge) for many years."

No.20 "Geese holding up traffic soon after the opening of Ivan Jack Drive. The one about the Anzac Day celebrant falling into the water. The one about the man returning the pelican to the Lagoon and the police thinking he was removing it".

No.22 "Not long after we moved to Wagga in 1974 we had a golden retriever 'Sandy'. We decided to take him for a walk... suddenly there was a great flapping noise and behold there was Sandy swimming in the middle of the Lagoon, herding up the geese!"



feed the swans. With my own teenagers it was a meeting place for us all to get together.

As a grandmother a beautiful place to walk and play with grandchildren and do some baby minding and space for them to run around in safety from the traffic. The countless venues we've attended in the parkland and the calming effect of the Lagoon along with it. It has been a wonderful portion of my life. I wouldn't like to imagine Wagga Wagga without this wonderful area."

No.57 "I have childhood memories of holidays with my grandparents who lived across the road from the Lagoon. On of the first places my sister and I visited after our arrival was the Lagoon, to feed the ducks, geese and tortoises with bread saved for the purpose by my grandmother."

No.58 "My adult children recall happy days with the grandparents, feeding the ducks and swans, and eating half the bread themselves."

No.63 "My son's school mate lost his glasses in the Lagoon on a school outing. My father and brother were in the Rescue Squad and went diving and found the glasses"

No.69 "During the depression of the 30s my parents had a farm at Mount Elliott, Yenda, and the only holiday Dad could afford was a week camping in the Wagga Wagga camping park. I thought Wagga, with its river lagoon and parks was the most beautiful place on earth. It took seventy years for me to make it but I am [living] here now."

No.70 "I have fond memories from my childhood days of coming to Wagga Wagga from the country with my family for shopping expeditions when Cokes were on the hill, DJ's etc., down that end, and having our picnic lunch in the gardens and sometimes joined by relatives making a real fun time. I also lunched there when I had my first job down that end of town."

No.72 "Our first visit to Wagga Wagga from Sydney was in 1947. We decided to have our lunch in the gardens. We walked over the bridge; what a beautiful sight. I could not resist a photo of the beautiful park and Lagoon, just so beautiful such great beauty

The geese and ducks and water hens were swimming up and down and coming up to help us to eat our own lunch.

No.24 "I came to Wagga 10 years ago. The day of my job interview I wandered through the park along the Wollundry Lagoon. The Rose Gardens showed me there was someone who cared about the parkland and the water was welcome amidst the aridity of the surrounding countryside."

No.27 "I remember a most enjoyable performance on the Lagoon Bank of 'Wind in the Willows'. It was sheer delight"

No.32 "(This contributor wrote a longer story about an incident in 1979 when a friend of his constructed a large papier mâché Loch Ness Monster known as Nessie. She was about eight feet long and six feet high. She was taken across the Lagoon in my boat to the little island in front of the Civic Theatre. As there was a cable strung under bridge, below water level, we had to get out of the boat and lift both boat and Nessie over the cable. Nessie became the talk of the town. After three days Council removed Nessie. There calls from the public to have a permanent Nessie in the Lagoon. This story is dedicated to my friend."

No.36 "As a teenager in the 1950s we regularly fed the geese, with at Xmas a bread trail leading to the garage of a friend's house along Wollundry Avenue. With orders for Xmas dinner geese we entered the geese into the garage and were about to catch and kill them for our pocket money when the parent returned home. We were not popular!"

No.39 "Feed the ducks', have lunch', don't fall in', admire the lovely gardens'; what have they planted? look for the flowers'. We love the scented garden for the blind-very kind; the playground for the kids and dodging the sprinklers."

No.44 "I have lived in Wagga Wagga for 64 years and in that time the Lagoon and parklands have been a big part of my life. As a child (it was safe then) we walked around the edges and sometimes fed the swans and ducks with stale bread.

The lower end near Forsyth street was used to paddle around in home made canoes. I even rescued a girlfriend when she fell in on our way home from school.

As a teenager the park was a romantic place to stroll around, with friends.

As a mother with babies and small children, coming into town once a week, it was a haven to go and have lunch and for the kiddies to run round and a treat to

We came to live in Wagga Wagga in 1954 and every time in town we spent our lunch time overlooking Wollundry Lagoon, so peaceful and beautiful. Wagga Wagga people are so lucky to have such a wonderful and beautiful tourist attraction.

In 1971 I painted a picture from Ivan Jack drive looking up to the town bridge [Fitzmaurice street bridge] long before the Lagoon was allowed to be choked with water lilies.

I am going on for 90 and I think back on all those lovely hours spent in the gardens by the Wollundry Lagoon and would hate to see Wagga Wagga lose such beauty and history.

No.74 "Turtles/tortoises used to breed in the bank below 2WG (now changed for the walkway) and we used to love watching tortoises etc., in the water from the Fitzmaurice street bridge".

No.84 "Once when meeting with two other friends near the children's park it started to rain so the three of us went for cover in the little red train. It was cosy so we stayed there talking after the rain stopped. A few passers by looked in and laughed at the three 'big kids'".

No.86 There used to be lots of little tortoises and you could watch them from the bridge in the main street. Now the beautiful water lilies are there, and what a sight they make.

I remember the footbridge where the Ivan Jack Drive is now. The Gurwood street school children used to come down and feed the ducks.

I seem to remember canoes on the Lagoon too. I remember a Venetian Carnival in the Memorial Gardens and up the Lagoon came several canoes all lit up with gaily coloured lights. These uses of the Lagoon were banned later.

One night two men drove their car into the Lagoon in the little street off Freer street. They were not hurt and there is a barricade there now.

No.90 "I was born in 1913. I remember catching Yabbies in the Lagoon and digging worms in the bank to sell to fisherman. We sold yabbies for sixpence a dozen and worms for a shilling an tin. He remember stock being driven down Murray street.

In those days there were six houses along the Lagoon between Thompson and Forsyth streets. I remember them being sold to Council for demolition, as the Lagoon was to be filled in? I remember the low level bridge in Forsyth street being flooded. There was a 'mud bank' (a levee bank where the Ivan Jack bridge is now) before a footbridge was put in to cross the Lagoon to get to school, in the early 1920's."

Many of the recollections referred to continuing long associations of respondents, their families and friends with the Lagoon area as a focus for passive recreation and as a venue of significance to the social fabric of the city.

These recollections and the strong opinions, expressed in the responses indicate a sense of 'ownership' of the Lagoon and its adjoining parklands by the community. It is not an exaggeration to say that many people expressed a spiritual affinity with the Lagoon.

#### Sample Wollundry Lagoon questionnaire comments

Unattached letter: "There is a need for larger rubbish bins - when there's wind around my front garden becomes a rubbish tip of lunch wraps of all descriptions - plastic drink vessels etc. The speed of a number of drivers on the dirt track causes clouds of dust ...which blows into our houses. The tall gum trees need pruning from time to time I have to frequently have my gutters cleared [because they fill with leaves]"

No.01 Replace poplars on Anzac Ave. Re-plant advanced deciduous trees between Beckwith street and Clear Park. Benalla, with its Lake in centre of town, is a good example for Wagga.

No.04 Replace prunus trees west of toilet block with evergreen shrubs or trees and continue this planting around dead-end turning circle. "I would like to know how the Lagoon is going environmentally and I would like assurance that it doesn't have added tourist attractions eg boating."

No.11 The watering system between Beckwith and Simmonds streets needs to be better serviced.

No.20 The area in front of the Civic Theatre could have a water-side walkway extending to Ivan Jack Drive.

[12x comments that the walkway along the Lagoon does not continue from Simmonds street to Ivan Jack Drive, with requests for it to do so.]

No.24 The Lagoon gives character to the city.

Its failure to conform to the grid pattern...provides a corridor ...enabling many opportunities to walk by the Lagoon rather than having to walk in a route defined by buildings.

I don't like the area becoming a crime haven.

Don't overload it with monuments

Proper consideration should be given to the ecology of the Lagoon. It seems ludicrous that Council's air-conditioning system may burden this gem of our city

6x comments voicing concerns for the lagoons future in relation to the long term effects of Council's heat exchange coils

No.26 Some sort of water circulation

Regular removal of rubbish - a great 'work for the dole scheme'

Clean it up ...but DO NOT CHANGE IT.

No.28 A billboard or plaque telling the history of the Lagoon

No.29 Too many trees, losers hang about there

5x comments relating to crime and vandalism; the need for better lighting and security.

Not enough flower beds.

No.39 The lily pond has spoiled the water ...too many lilies.

3x comments regarding the proliferation of water lilies.

No.40 Native ducks only

Irrigation needed from Murrumbidgee to run through the Lagoon to flush clean regularly - daily

[5x comments related to improving water circulation or water flow through the Lagoon.]

No.45 Comments re Council's dredging of Forsyth end of Lagoon.

No.46 Install a watering system to promote growth of grass at southern end of Wollundry Ave.

No.48 Get rid of those boxes in the middle of the water.

No.49 More play equipment for children

No.54 Better design of bridge railing - Ivan Jack Drive.

Street furniture needs to be of better quality and design.

Edge of water in V. M. Gardens could be levelled and paved

No.56 Damage to soils, trees and wildlife by weedicide drift and careless use of chemicals.

No.61 The tombstone-like Peace Memorials - they are ugly and out of place. Don't put another monument in the Memorial Gardens.

[13x negative comments regarding monuments and memorials generally 5x negative comments specifically related to the Peace monuments 3x positive comments regarding the monuments and memorials generally.]

No.63 If it is a recreation Lagoon - let the kids fish.

No.67 Much credit must be given to the gardeners who maintain the gardens

No.68 A pedestrian crossing - Best street and Ivan Jack drive.

No.69 A shop where one can buy drinks. There should be a fence between the children's play area and the water.

No.71 This is not a natural Australian setting

No.73 Defined car parking west of Beckwith street.

No.74 Better planning of Memorial Gardens; garden beds, plant selection, open spaces and monuments/memorials need re-thinking. Build timber walkway over water to link Road Traffic Authority to Ivan Jack drive and existing walkways. Improved biodiversity of Lagoon generally.

No.75 Installation of interpretative signs re: historic and natural features, viz Tidy Towns offer of signs.

[The remaining fragments of native vegetation, birds, and wildlife are reminders of our natural heritage].

No.79 No changes at all, please leave it so natural. Please listen to the people and not be like Wagga Council, never listen to our voices, all know its no use giving our opinions, Council never takes advice- the Main street

[9x comments requesting improved water management and rubbish control but also emphasising not to change it overall. No more development].

No.82 Remove exotic tree species and re-plant ... using seed of existing stands of native species around the water. Control polluted run-off. Monitor and minimise pesticide levels. Plant shore lines to prevent erosion and run-off.

No.83 No taps if in need of water, especially across from fire station. No toilet facilities in park. It is quite dangerous crossing Morrow street.[to the toilet]. Installation of platforms jutting out into the Lagoon [for feeding wildlife]?

#### **General comments collected from the community survey**

Nine respondents, whilst acknowledging the need to remove rubbish more effectively and the need to improve water quality, emphatically stated that they did not want to see the Lagoon area changed.

The summary of miscellaneous responses represents the variety of views and values expressed by the members of the public

Civic Trust members noted that many comments are well informed, but that others are perceptions based on mis-information.

There appears a need to reconcile some opposing opinions. The main differences were between those who prefer a 'natural' landscape with re-establishment of native vegetation and wildlife and those who see a need for developments such as: paved areas; more paths and walkways; more picnic and BBQ facilities; more seating; a shop; toilets; more play equipment; interpretative signage; more ducks and geese; extension of domestic style landscaping onto Lagoon banks especially in the Wollundry Ave area. These issues present challenges for the Civic Trust, the Wagga Wagga City Council and the community.

Thus tensions exist between the expressed desire on the part of some to extend human intrusions such as the domestic landscaping onto the banks of the Lagoon (especially on the Wollundry avenue side) and those who would reduce human intrusion in order to re-establish native plants and wildlife. This tension was apparent again as some respondents called for caution in the number, size and location of monuments and memorial. Again, some saw a need to re-establish the poplars along Anzac avenue while others would want to revert the whole area to native plant species. Some respondents called for more reed beds in the Lagoon while one respondent wanted existing reed beds removed.

The resolution of these tensions presents a challenge to the WWCC and to the community.

## **Appendix B**

Flora and Fauna lists for whole of Lagoon (not necessarily VMG)

Source: The Short Report (WWCC) 1992

APPENDIX 1

rat, it is very unlikely that any small ground-dwelling native mammals occur in the area. Observations made on regular visits to the area between 1987 and 1992 (Robertson) have been used to compile the mammal list.

TABLE 1: TERRESTRIAL VASCULAR PLANTS GROWING IN WOLLUNDY LAGOON RESERVE (FROM SURVEY 7 SEPTEMBER 1992)

Note: Species which are indigenous to the lagoon areas are shown in bold. All other species have been introduced for ornamental purposes or have grown as weeds.

TREES AND SHRUBS

- Acacia baileyana
- Acacia floribunda
- Acacia melanoxylon
- Allocasuarina stricta
- Artemisia sp
- Brechychiton populneus
- Cassia sp
- Casuarina cunninghamiana
- Catalpa bignoniodes
- Chaenomeles japonica
- Cotoneaster frigida
- Erythrina sykesii
- Eucalyptus camaldulensis**
- Eucalyptus citriodora**
- Eucalyptus cladocalyx**
- Eucalyptus ficifolia**
- Eucalyptus melliodora**
- Eucalyptus saligna**
- Fraxinus excelsior
- Fuchsia sp
- Genista monspessulana
- Ligustrum vulgare
- Melaleuca armilaris
- Melaleuca leucadendra
- Melia azedarach
- Olea europaea
- Phoenix canariensis
- Populus alba
- Populus nigra italica
- Prunus sp
- Cootamundra Wattle
- Coast Wattle
- Blackwood Wattle
- Drooping She-oak
- Wormwood
- Kurrajong
- Cassia
- River Oak
- Catalpa
- Japonica
- Clusterberry
- Coral Tree
- River Red Gum
- Lemon-scented Gum
- Sugar Gum
- Flowering Gum
- Yellow Box
- Sydney Blue Gum
- European Ash
- Fuchsia
- Cape Broom
- Privet
- Drooping Melaleuca
- Swamp Paperbark
- White Cedar
- Olive
- Canary Island Date
- White Poplar
- Lombardy Poplar
- Ornamental Cherry

APPENDIX 1

TREES AND SHRUBS CONTINUED

- Pyracantha angustifolia
- Robinia pseudacacia
- Salix alba
- Salix babylonica
- Salix chilensis
- Salix matsudana
- Orange Firethorn
- Black Locust
- White Willow
- Weeping Willow
- Chilean Pencil Willow
- Contorted Willow

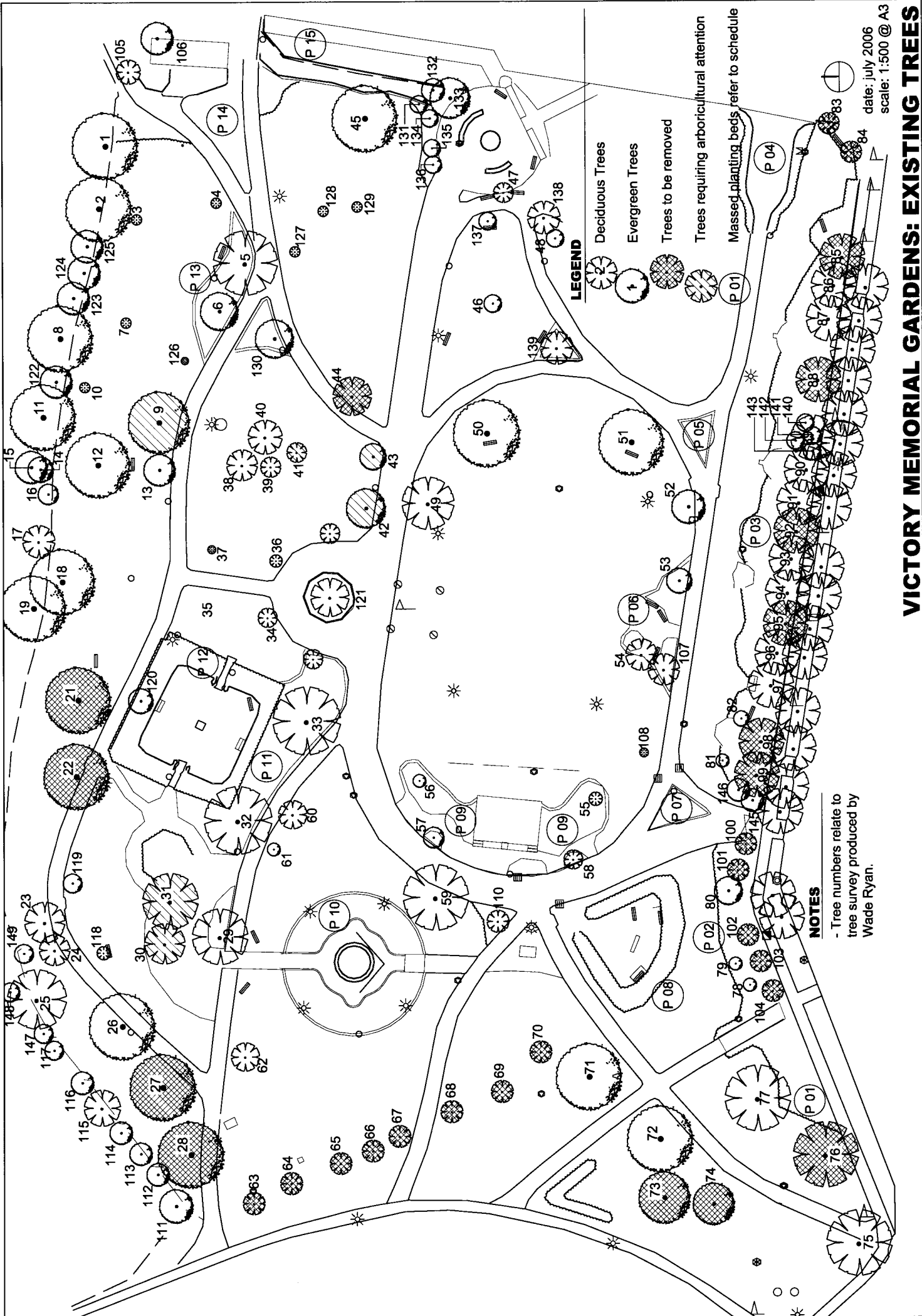
HERBACEOUS PLANTS

- Acanthus mollis
- Agapanthus africanus
- Agropyron scabrum
- Allium triquetrum
- Amaryllus belladonna
- Arctotheca calendula
- Bambusa vulgaris
- Bromus unioloides
- Canna Indica
- Chrysanthemum frutescens
- Cortaderia selloana
- Crassula arborescens
- Cynodon dactylon
- Cyperus eragrostis
- Danthonia racemosa
- Danthonia sp
- Echium plantagineum
- Eragrostis sp
- Erodium sp
- Euphorbia peplus
- Freesia refracta
- Fumaria officianalis
- Gallium aparine
- Geranium solanderi
- Geranium sp
- Hedera helix
- Hypochoeris radicata
- Iris kaempferi
- Iris sp
- Lavatera plebeia
- Lepidium campestre
- Leucolum aestivum
- Lolium perenne
- Lolium rigidum
- Oyster Plant
- African Lily
- Wheat Grass
- Angled Onion
- Naked Lady
- Capeweed
- Bamboo
- Prairie Grass
- Canna
- Margeurite
- Pampus Grass
- Chinese Jade
- Couch Grass
- Umbrella Sedge
- Wallaby Grass
- Wallaby Grass
- Patterson's Curse
- Cane Grass
- Storksbill
- Petty Spurge
- Freesia
- Fumitory
- Cleavers
- Geranium
- Common Geranium
- Common Ivy
- Cats Ear
- Japanese Iris
- Bearded Iris
- Australian Hollyhock
- Field Cress
- Snowflake
- Perennial Rye-grass
- Wimmera Rye-grass

## **Appendix C**

Tree report by Wade Ryan, Arborist

Not all trees were picked up in this report. Other trees have been numbered, named and comments given, for both the VMG and the northern side of the lagoon.



**LEGEND**

- Deciduous Trees
- Evergreen Trees
- Trees to be removed
- Trees requiring arboricultural attention
- Massed planting beds refer to schedule

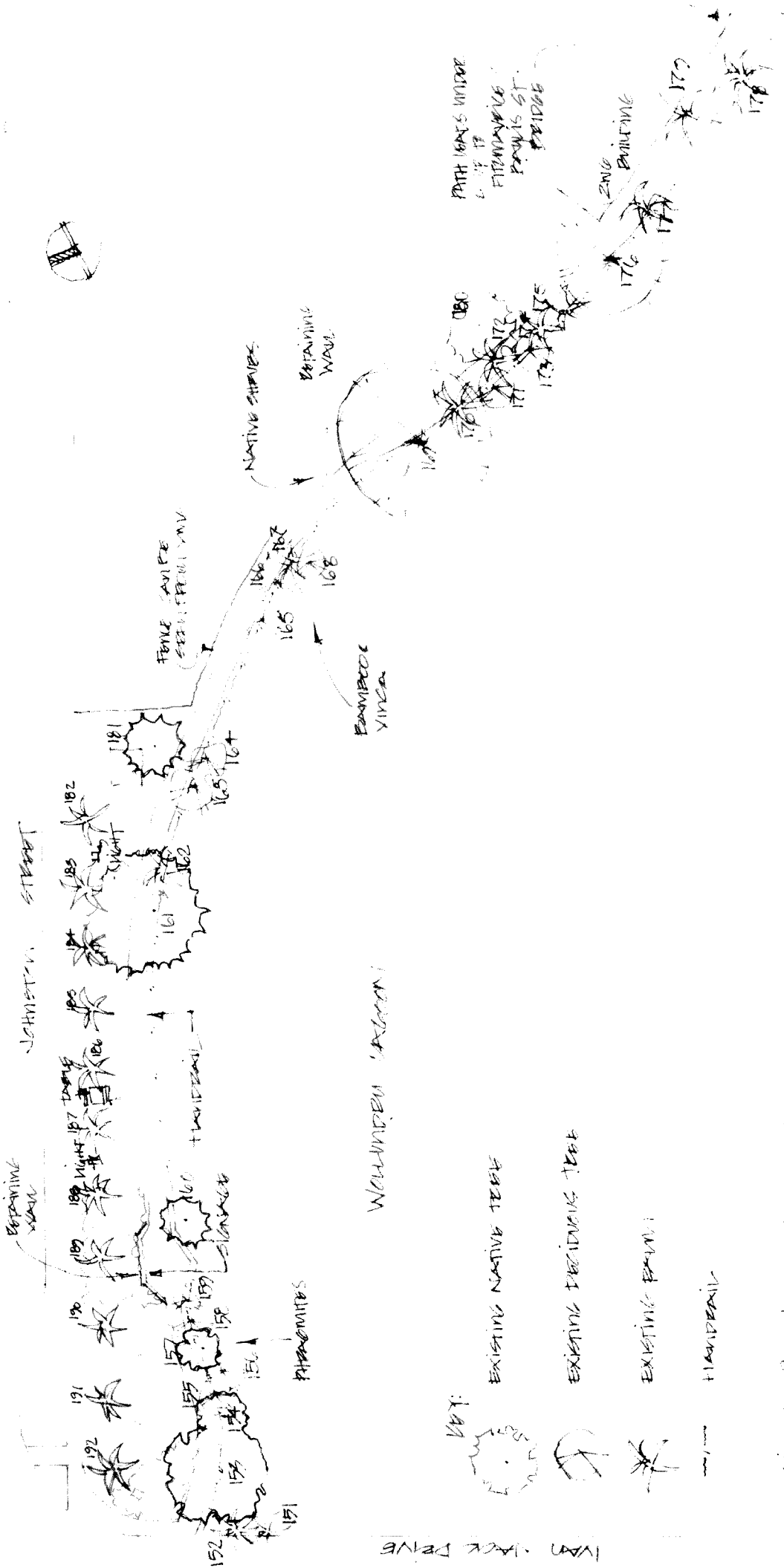
**NOTES**

- Tree numbers relate to tree survey produced by Wade Ryan.

date: July 2006  
scale: 1:500 @ A3

**VICTORY MEMORIAL GARDENS: EXISTING TREES**





WOUNDER AVENUE

JOHNSTON STREET

VAN HOOK DRIVE

EXISTING NATIVE TREE

EXISTING DECIDUOUS TREE

EXISTING BRUSH

TRAIL



PROPERTY OF JOHNSTON STREET

(SCALE 1:500)

**TABLE TWO.**

**VICTOR MEMORIAL GARDENS.**

Tree No.	SPECIES	DEFECTS.	RATING.
1	<i>Eucalyptus camaldulensis</i>	Multiple limb failures. Tree hangs over lagoon.	4
2	<i>E. camaldulensis</i>	Multiple limb failures, dead wood to 150 mm. Tree hangs mostly over lagoon.	4
6	<i>Melaleuca stypheloides</i>	Co dominant leader. Remove same.	3
8	<i>E. camaldulensis</i>	7 large dead limbs, all over lagoon.	4
9	<i>E. melliodora</i>	Bacterial galls in lower lateral branches. Minor deadwood. Remove same. Cavity in main stem at 8 metres requires aerial inspection.	Not known.
12	<i>E. cladocalyx</i>	Lopped at 8 m. Whole canopy epicormic growth. Epicormic growth of average attachment. Initial signs of decay in stubs.	3
18	<i>E. spp.</i>	Lopped at 9 metres. Epicormic canopy of average attachment. Small broken hanging limb.	3
21	<i>E. cladocalyx</i>	Lopped at 9 metres. Canopy epicormic. Both leaders below point of lopping have extensive cavities at 5 metres. White ant activity. Bracket fungi present. Large failure imminent. Remove tree.	1
22	<i>E. cladocalyx</i>	Lopped at 9 metres. White ant activity in stubs. Whole canopy epicormic. All 3 leaders have substantial vertical cankers, included bark on eastern leader. Cavity adjacent to footpath at ground level, bracket fungi located. Requires minimum of canopy reduction or removal.	2
23	<i>Poplar spp.</i>	Lopped at 8 m. Large dead stub with borer activity. Needs removal. Tree needs monitoring.	3
25	<i>Poplar spp.</i>	Lopped at 5 metres. Dead stub over park. Borer activity. Remove same. Monitor tree.	4
26	<i>E. cladocalyx</i>	Lopped between 4 & 8 m. Dead stubs. Major canker at 3.5 m. small bracket fungi. Remove small limb over pathway, monitor tree.	3
27	<i>E. cladocalyx</i>	Lopped at 10 metres. Entire canopy epicormic. Major canker on west side with bracket fungi, white ants. Large cavity at 2.5m. Requires drilling to establish extent of decay. Requires serious remedial works or removal.	2

28	<i>E. cladocalyx</i>	Lopped at 6 to 7 metres. Canopy epicormic. Canker and cavity on northeast side. Extensive cankers in 3 leaders, white ants, die back in canopy. Requires serious remedial works or removal.	2
30	<i>Liquidambar spp.</i>	Damage to stem at ground level from fire. Heartwood still sound. Minor dead wood, and broken hanging branch.	3
31	<i>Liquidambar spp.</i>	Storm damaged limbs require remedial works. Dead wood. Eastern lateral limb is hollow, needs removal. Borers in main stem.	3
32	<i>Quercus palustris</i>	Minor dead wood. Storm damaged limb 250 mm needs removal.	4
33	<i>Quercus spp.</i>	Dead wood needs removal.	3
38	<i>Populus alba</i>	Dieback in upper canopy. Dead wood needs to be removed.	4
41	<i>P. alba</i>	Cavity in main trunk at base. Bracket fungi present. Requires drilling to determine safety of stem. Reduce large laterals as minimum.	2-3
42	<i>G. robusta</i>	Lopped at 8 m. Cavity evident in stem requires aerial inspection.	Not known.
43	<i>G. robusta</i>	Needs aerial inspection of cavity.	Not known.
44	<i>Fraxinus excelsior</i>	Die back in canopy. Continue to remove dead wood. Budget for removal within 5 years.	4
45	<i>A. bidwillii</i>	Medium to large Bunya. Substantial lean to north. Considerable amount of gum exuding from stem. No sign of heaving, stem apparently sound.	4
47	<i>Gleditsia spp.</i>	Branch badly rubbing on infrastructure. Remove branch.	3
50 & 51	<i>Cedrus deodara</i>	Minor dead wood.	3
52	<i>G. robusta</i>	Deadwood < 100mm. Substantial cavity at base. Bracket fungi present. Cavity requires drilling to determine extent of decay.	3-2
65-70	<i>Populus nigra</i> 'Italica'	All trees sounded with cavities in base of stems. Some very bad, some only poor. All these trees need drilling to determine extent of cavities and remaining sound wood to determine exact risk. All trees in this line have dieback and dead wood. Several of these trees are likely to fail at base.	Between 1 and 3.
71	<i>Laccadipius spp.</i>	Lopped at 7 to 8 metres. Canopy epicormic. Major limb failure on nw side. Decay present in main stem at 7 metres. Privet tree growing in decay zone.	2-1
		Tree has substantial lean to north. South side has extensive cavity at stem base	

**NOTE:** Trees numbered from plotted map supplied by Mr. Stapleton. Tree species identified in field.

**CONCLUSION:**

The survey and inspection of all the trees in table one and two is only a brief 'snap shot' of defects in the listed trees. All the trees listed have defects that will eventually lead to failures. I must reiterate that the ratings on the trees are a guide, and that the rating is relative to each other, that all the trees in this report have been rated against each other. Trees rated 2 and 1 should be considered as high and critical, requiring immediate or short term action.

Trees rated 3, whilst lower rating will most likely progress to higher rating over time. A number of the trees requiring monitoring. Borer infestations, decay and dieback will progress. A number of the trees require aerial inspection or further more lengthy investigation.

It should be noted that the Elm trees in both these parks have been badly attacked by longicorn borers, which I expect is a result primarily of low rainfall over the last three summers. Poor pruning (lopping), and failure to conduct remedial works on storm-damaged trees has exacerbated the problem. Most of these trees will have to be removed over the coming years.

As two historical parks in Wagga Wagga, I recommend that a full audit of the trees be undertaken to enable planning and budgeting for ongoing remedial works, removal and replacement. Many of the trees in both parks are coming towards the end of useful amenity life.

Wade Ryan  
Certified Arborist  
Kirwan Ground Maintenance  
9 September 2004.

**REFERENCE:**

Ionsdale, David (1999). *Principles of Tree Hazard Assessment and Management*. pp 146. Dept. Transport and Local Government Regions, London.

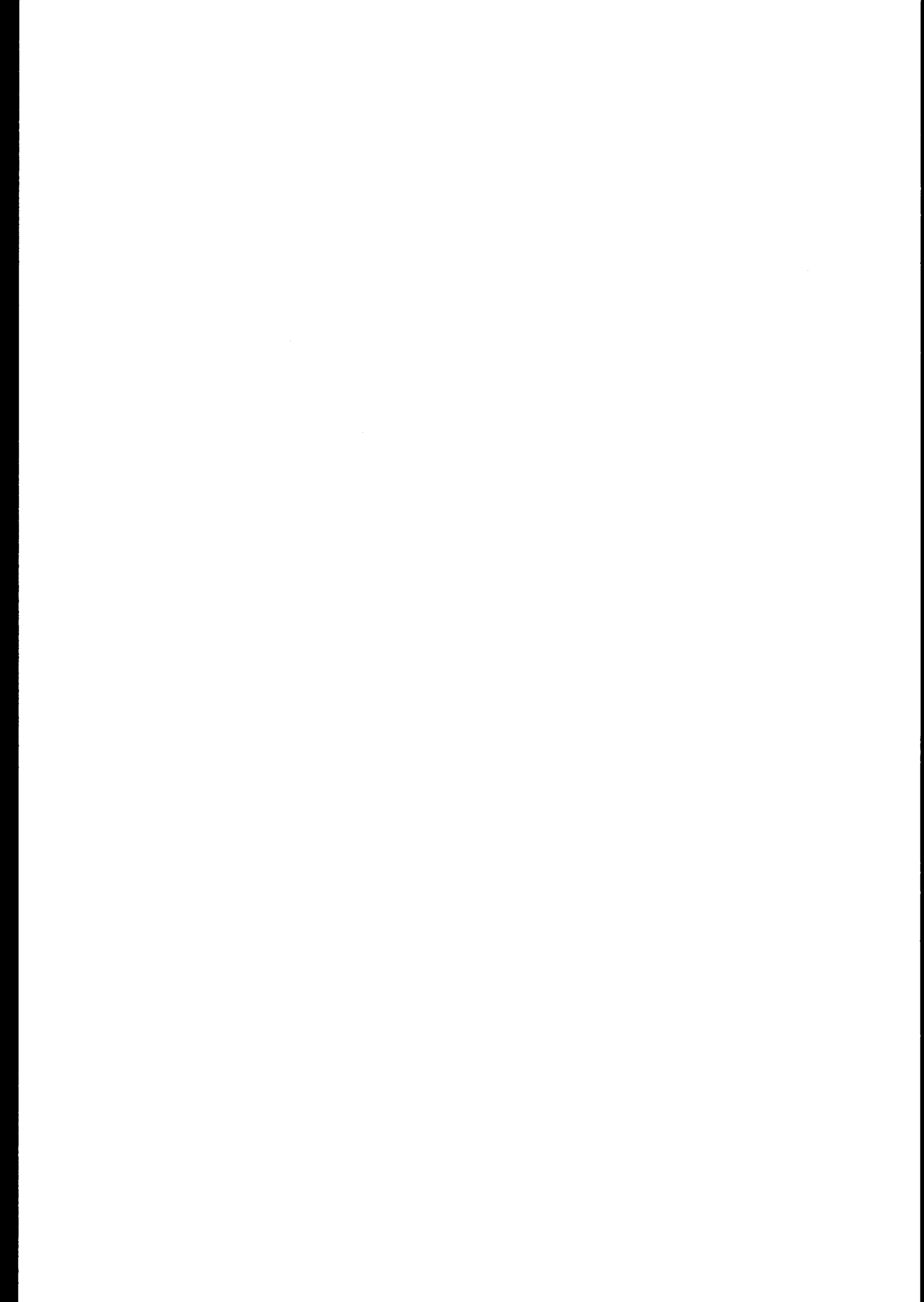
72	<i>E. melliodora</i>	and crown of root system. Remove tree. Dead wood over footpath, remove lower limb on eastern side.	3																																																															
73	<i>C. robusta</i>	Lopped at 5 metres. Canopy epicormic, 4 failures. White ants, major cavity at lopping point. Basal decay present, estimated at 60 to 70%. Remove tree.	2																																																															
74	<i>C. robusta</i>	Lopped at 6 metres. Canopy epicormic, 2 failures. Cavities in several stubs. Reduce canopy or remove.	3-2																																																															
75	<i>Q. robur</i>	Minor dead wood. Small broken hanging branches.	4																																																															
76	<i>C. procera</i>	Large Elm. Extensive borers in south leader to at least 400 mm diameter. Storm damage to canopy. Dead wood to 150 mm. Bacterial wet wood and borers in main stem. Multiple cavities in stem and leader. Requires serious canopy reduction or removal.	2-1																																																															
83 & 84	<i>Populus simonii</i>	Both young trees growing adjacent to retaining wall and footpath. Completely unsuitable for location, will cause continued long term infrastructure damage.	N/A																																																															
85 to 104.	<i>Populus nigra</i> 'Italica'	Line of poplar trees in varying stages of health. Basal stem sounding revealed a number of trees with extensive basal decay, some with open cavities.																																																																
		<table border="1"> <thead> <tr> <th>Tree no.</th> <th>Condition</th> <th>Rating</th> </tr> </thead> <tbody> <tr><td>85</td><td>Poor</td><td>2</td></tr> <tr><td>86</td><td>Average</td><td>3</td></tr> <tr><td>87</td><td>Reasonable</td><td>4</td></tr> <tr><td>88</td><td>Poor</td><td>3</td></tr> <tr><td>89</td><td>Reasonable</td><td>4</td></tr> <tr><td>90</td><td>Reasonable</td><td>4</td></tr> <tr><td>91</td><td>Co dominant</td><td>3</td></tr> <tr><td>92</td><td>Poor</td><td>2</td></tr> <tr><td>93</td><td>Reasonable</td><td>4</td></tr> <tr><td>94</td><td>Good</td><td>4</td></tr> <tr><td>95</td><td>Very poor</td><td>2</td></tr> <tr><td>96</td><td>Good</td><td>4</td></tr> <tr><td>97</td><td>Reasonable</td><td>4</td></tr> <tr><td>98</td><td>Poor</td><td>2</td></tr> <tr><td>99</td><td>Poor</td><td>3</td></tr> <tr><td>100</td><td>Poor</td><td>2</td></tr> <tr><td>101</td><td>Very poor</td><td>1</td></tr> <tr><td>102</td><td>Poor</td><td>2</td></tr> <tr><td>103</td><td>Poor</td><td>2</td></tr> <tr><td>104</td><td>Very poor</td><td>1</td></tr> </tbody> </table>	Tree no.	Condition	Rating	85	Poor	2	86	Average	3	87	Reasonable	4	88	Poor	3	89	Reasonable	4	90	Reasonable	4	91	Co dominant	3	92	Poor	2	93	Reasonable	4	94	Good	4	95	Very poor	2	96	Good	4	97	Reasonable	4	98	Poor	2	99	Poor	3	100	Poor	2	101	Very poor	1	102	Poor	2	103	Poor	2	104	Very poor	1	
Tree no.	Condition	Rating																																																																
85	Poor	2																																																																
86	Average	3																																																																
87	Reasonable	4																																																																
88	Poor	3																																																																
89	Reasonable	4																																																																
90	Reasonable	4																																																																
91	Co dominant	3																																																																
92	Poor	2																																																																
93	Reasonable	4																																																																
94	Good	4																																																																
95	Very poor	2																																																																
96	Good	4																																																																
97	Reasonable	4																																																																
98	Poor	2																																																																
99	Poor	3																																																																
100	Poor	2																																																																
101	Very poor	1																																																																
102	Poor	2																																																																
103	Poor	2																																																																
104	Very poor	1																																																																
105	<i>Fraxinus excelsior</i>	Deadwood over footpath.	3																																																															

Tree No.	Species	Comments
4	<i>Pyrus usseriensis</i>	Could be relocated
5	<i>Fraxinus</i> sp.	
7	Deciduous	Could be relocated
10	<i>Quercus</i> sp.	Could be relocated
11	<i>Eucalyptus</i> sp.	
13	<i>Lophostemon confertus</i>	
14	<i>Casuarina cunninghamina</i>	
15	<i>Eucalyptus camaldulensis</i>	
16	<i>Casuarina cunninghamina</i>	
17	<i>Salix</i> sp.	To be removed
19	<i>Eucalyptus camaldulensis</i>	
20	<i>Fraxinus</i> sp.	
24	Poplar sp.	
29	<i>Liquidamber styraciflua</i>	Has been burnt out at the base
34	<i>Prunus</i> sp.	
35	<i>Eucalyptus</i> sp.	
36	<i>Prunus</i> sp.	
37	Deciduous	
46	<i>Washingtonia robusta</i>	Vine growing up and over Palm
48	<i>Syzygium</i> sp.	
49	Weeping tree	Hollows in limbs. Popular with children
53	<i>Brachychiton populneus</i>	
54	<i>Quercus</i> sp.	Could be relocated
55	Has been removed- was a <i>Cedrus</i> as below	
56	<i>Cedrus deodara</i>	
57	Poplar sp.	
58	Poplar sp.	
59	Poplar sp.	Appears to be in decline
60	Deciduous	
61	Conifer	
62	Deciduous	
77	<i>Ulmus parvifolia</i>	
78	<i>Syzygium</i> sp.	
79	<i>Syzygium</i> sp.	
80	<i>Phoenix canneriensis</i>	Should be retained as Kerrs' namesake
81	<i>Syzygium</i> sp.	
82	<i>Syzygium</i> sp.	
107	<i>Robinia pseudoacacia inermis</i>	Could be relocated
108	<i>Gleditsia triacanthas</i>	
109	<i>Pyrus</i> sp.	
110	<i>Populus simonii</i>	
111	<i>Phoenix canneriensis</i>	
112	<i>Eucalyptus camaldulensis</i>	
113	<i>Eucalyptus camaldulensis</i>	
114	<i>Eucalyptus camaldulensis</i>	
115	Poplar sp.	
116	<i>Phoenix canneriensis</i>	
117	Group of <i>Phoenix</i> coming up on edge of lagoon	To be removed
118	Deciduous	
119	<i>Melaleuca</i> sp.	
120	<i>Lophostemon confertus</i>	
121	? Churchill Memorial	To be relocated

122	Casuarina cunninghamina	
123-125	Casuarina cunninghamina	
126	Quercus sp.	
127	Deciduous	
128	Deciduous	
129	Deciduous	
130	Magnolia sp.	
131	Syzygium sp.	
132	Palm species	
133	Calodendrum capense	
134	Syzygium sp.	
135	Conifer	
136	Conifer	
137	Conifer	
138	Gleditsia triacathas	
139	Erythrina caffra	Unusual for a Coral Tree in this region
140-143	Conifer	
144	Conifer	
145	Conifer	
146	Phoenix canneriensis	Should be retained as Kerrs' namesake
147	Eucalyptus camaldulensis	
148	Eucalyptus camaldulensis	
149	Eucalyptus camaldulensis	
150	8 Phoenix palms along the edge of the Lagoon	To be removed

<b>Trees to the opposite side of the VMG</b>		
<b>Tree No.</b>	<b>Species</b>	<b>Comments</b>
151	Phoenix canneriensis	To be removed
152	Phoenix canneriensis	To be removed
153	Eucalyptus camaldulensis	Habitat tree
154	Eucalyptus camaldulensis	
155	Salix sp.	To be removed
156	Quercus sp.	To be removed
157	Grevillea robusta	
158	Salix sp.	To be removed
159	Salix sp.	To be removed
160	Eucalyptus camaldulensis	
161	Eucalyptus camaldulensis	Significant habitat tree (hollows/ bees nest)
162	Phoenix canneriensis	To be removed
163	Ligustrum sp.	To be removed
164	Melia azaderach	To be removed
165	Salix sp.	To be removed
166	Ligustrum sp.	To be removed
167	Phoenix canneriensis	To be removed
168	Ligustrum sp.	To be removed
169	Poplar sp.	Massive tree- to be retained
170	Phoenix canneriensis	To be removed
171	Ligustrum sp.	To be removed
172	Phoenix canneriensis	To be removed
173	Salix sp.	To be removed
174	Phoenix canneriensis	To be removed
175	Phoenix canneriensis	To be removed
176	Platanus sp.	Massive tree- to be retained
177	Phoenix canneriensis	To be removed
178	Phoenix canneriensis	To be removed

179	Phoenix canneriensis	Next to 2WG building-retained as development
180	Eucalyptus sp.	Mature tree
181	Grevillea robusta	Mature tree
182-193	Phoenix canneriensis	Evenly spaced trees- avenue along Johnston St
		Significant avenue of trees.



## **Appendix D**

### Plants used in Interwar Gardens

The rose was never as popular as it was during the interwar period, the most popular being the hybrid tea rose. Some of the most popular hybrid teas of this period were:

Rev F Page Roberts (yellow blooms)

Columbia (fragrant pink)

Sunny South (pink flushed with carmine on a yellow base for a tall hedge)

Lorraine Lee (Apricot pink blooms)

Golden Dawn (primrose yellow rose)

Climbing roses

Black Boy (Red)

Climbing Madam Abel Chatenay (Salmon pink)

**Source (Popular Period plantings) Interwar gardens A guide to the history, conservation and management of gardens 1915-1940. the National Trust of Australia (NSW) Parks and Gardens conservation committee 2003**

### *Annuals*

Winter and Spring annuals

Iceland poppy (*Papaver nudicaule*) and Shirley Poppy (*Papaver rhoeas*) Sweet Pea (*Lathyrus odoratus*) Pansy (*Viola x hybrida*), Violet (*Viola* sp.) Snapdragon (*Antirrhinum majus*) Poor mans orchid (*Schizanthus cvs*) Stock (*Matthiola incana cvs*)

Summer and autumn annuals

China aster (*Callistephus chinensis*), Red bedding Sage (*Salvia splendens* – Churchill plaque.

Clarkia (*Eucharidium concinnum*)

Californian Poppy (*Escholzia californica*)

African and French Marigold (*Tagetes* sp.) Begonia (*Begonia semperflorens*) Cosmos (*Cosmos bipinnatus*) Coleus (*Coleus blumei*) and Zinnias (*Zinnia* sp.)



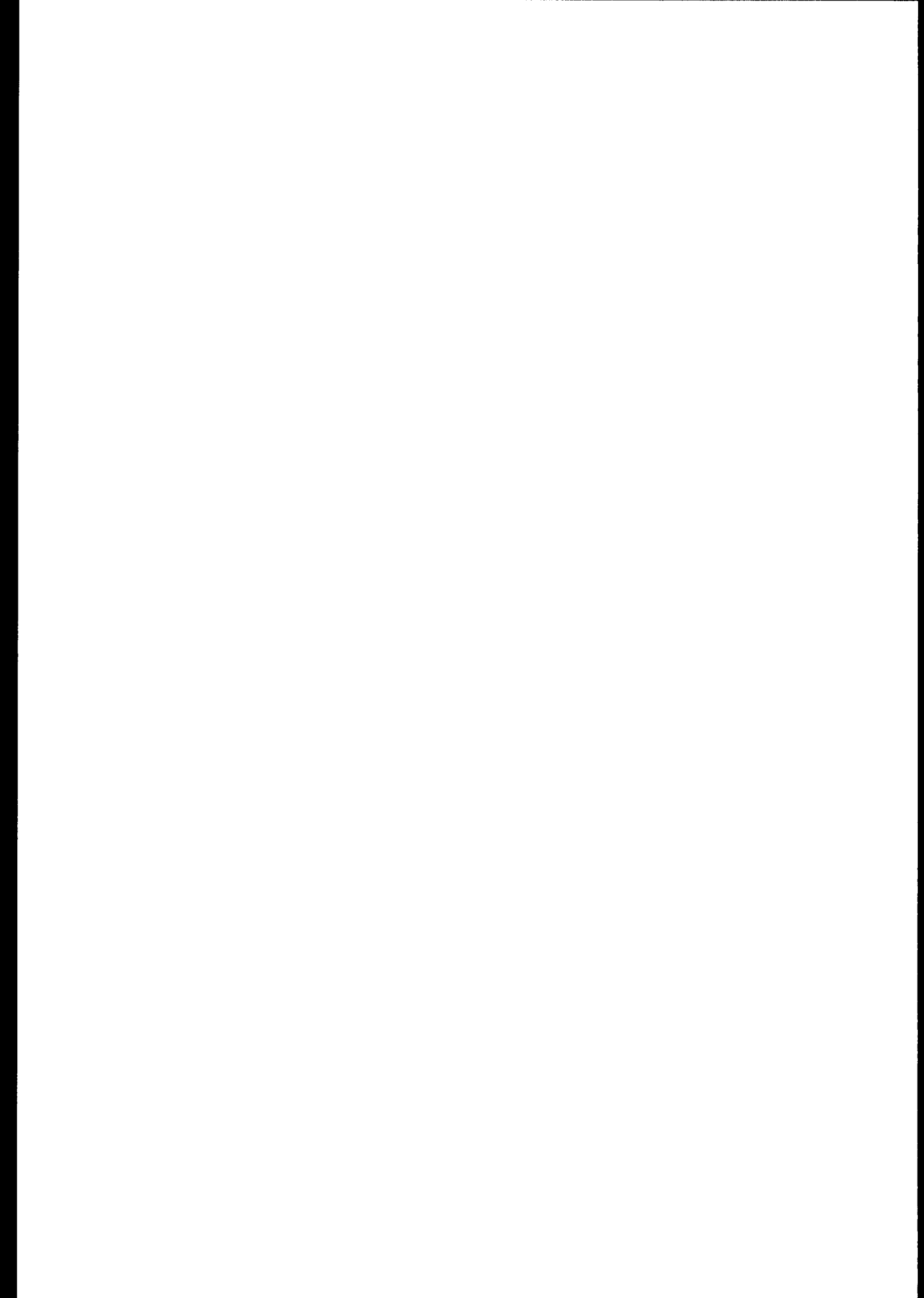


### *Perennials*

Carnations and Cottage pinks (*Dianthus*), *Chrysanthemum* sp (*Dendranthema*) often staked (like Dahlias) Daffodil and Jonquil (*Narcissus*), *Gypsophila* (Baby's Breath) Holly Hock (*Althaea* sp.) *Canna* sp. (Indian shot)

**Source: Popular Period plantings) Interwar gardens A guide to the history, conservation and management of gardens 1915-1940. the National Trust of Australia (NSW) Parks and Gardens conservation committee 2003. (P22)**

The following lists are the plants that exist in the gardens today (June 2006) The planting bed nos (P1 etc.) are in reference to Figure 8 (also at Appendix C) Existing trees of the Victory Memorial Gardens.



Planting bed No	Understorey species
P1	Conifer species
P2	Coprosma sp. Erysimum sp. Rosa sp. (climbing) Buddleja sp. Chaenomeles speciosa Iris sp. Viburnum tinus Diosma sp. Bulbs
P3	Coprosma sp. Agapanthas sp. Salvia sp. Lantana sp. Hebe sp. Cordyline sp. Chrysanthemum sp. Viburnum sp. Osteospermum Nerium oldeander Abelia grandiflora Cistus sp. Lonicera Convulvulus cneorium Annuals Bulbs
P4	Rosmarinus officianalis Cupressus sp. Buxus microphylla
P5	Annuals
P6	Camellia sp. Salvia sp. Iris sp. Yellow flowers
P7	Conifers
P8	Roses
P9	Hedera Helix Bambusa sp. Cordyline australis Ziera

P10	<p> Lavandula sp  Juniperus sp.  Dahlia sp.  Salvia sp.  Laurus nobilis  Camellia sp.  Artemesia sp.  Lonicera sp.  Lagerstroemia sp. </p>
P11	<p> Acanthas mollis  Aqueligia sp.  Gordonia sp.  Camellia sp.  Buxus sp.  Hydrangea sp.  Azalea sp.  Coprosma sp.  Bulbs </p>
P12	<p> Agapanthas sp.  Pittosporum sp.  Magnolia sp.  Eunomys sp. </p>
P13	<p> Chysanthemum sp.  Camellia sp.  Hebe sp.  Viola sp.  Coprosma sp.  Liriope sp.  Buxus sp.  Spiraea sp. </p>
P14 and 15	<p> Nerium oleander  Escallonia sp.  Bamboo  Camellia sp.  Annuals  Liriope sp.  Salvia sp.  Juniperus sp.  Agapanthas sp.  Pittosporum sp.  Chrysanthemum sp.  Artemesia sp.  Rhododendron sp.  Coprosma sp.  Gazania sp.  Rosmarinus sp. </p>

Chrysanthemum sp.
Agapanthas sp.
Artemesia sp.
Ajuga sp.
Erigeron sp.
Bulbs
Achillea sp.
Canna Lily

## **Appendix E**

Asset inventory of the Gardens.

This also includes the location and information on the memorials as is included within the main body of the document.

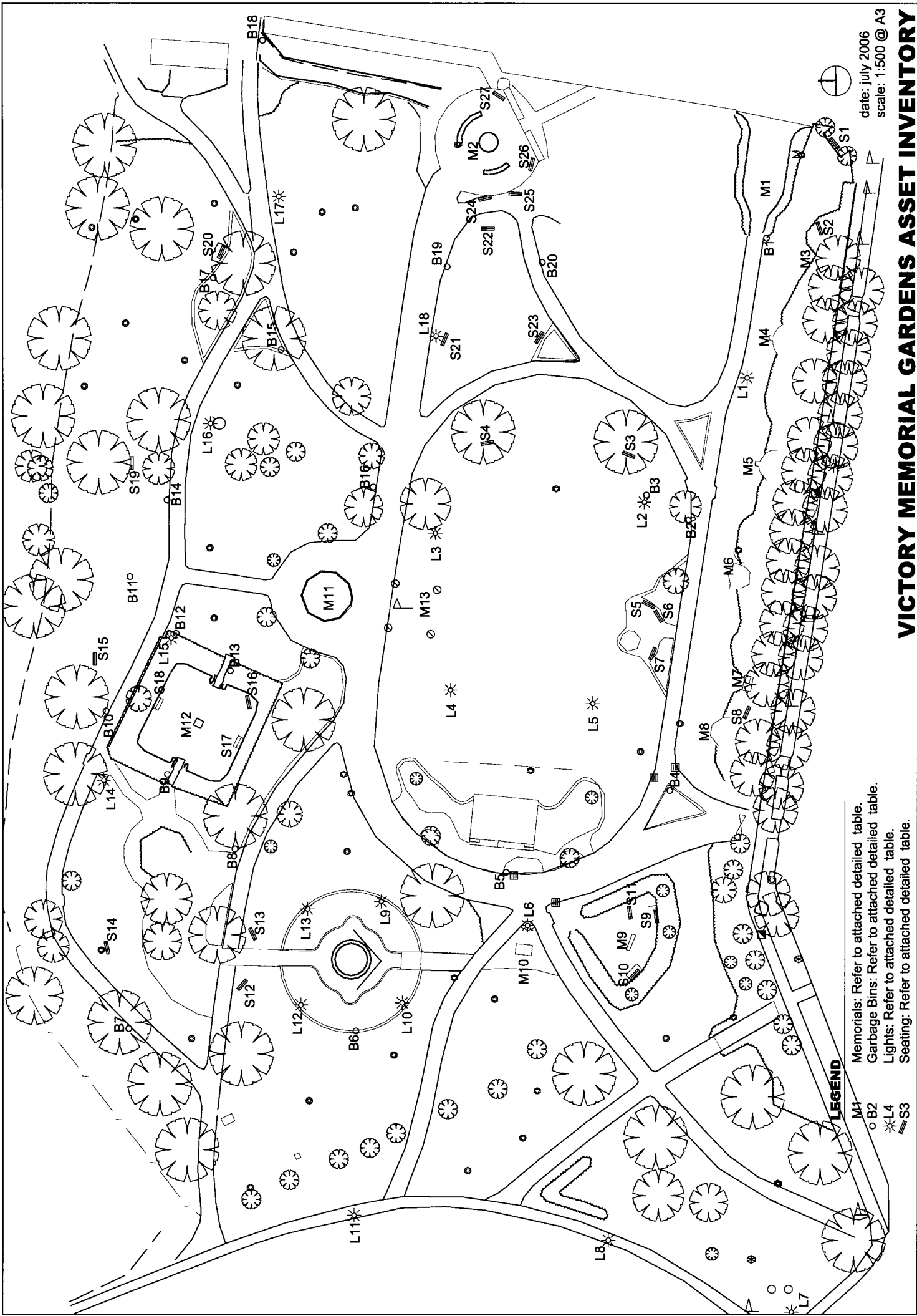
## **Victory Memorial Gardens Asset Inventory:**

---

### **Table of contents**

<b>Survey Plan</b>	<b>1</b>
<b>Memorials and plaques</b>	<b>2 - 12</b>
<b>Seats</b>	<b>13 - 15</b>
<b>Lights</b>	<b>16 - 17</b>
<b>Bins</b>	<b>18 - 19</b>





date: July 2006  
 scale: 1:500 @ A3

**VICTORY MEMORIAL GARDENS ASSET INVENTORY**

**LEGEND**

- M1 Memorials: Refer to attached detailed table.
- B2 Garbage Bins: Refer to attached detailed table.
- L4 Lights: Refer to attached detailed table.
- S3 Seating: Refer to attached detailed table.

## Victory Memorial Gardens Asset Inventory: Memorials & Plaques

---

<b>Memorial ID:</b>	<b>M1 - Cenotaph</b>
<b>Material used:</b>	Bowral Trachyte with a concrete base.
<b>Condition:</b>	Good. Pencil pines overgrown and obscuring the memorial.
<b>Content:</b>	Cenotaph built in 1922 prior to the gardens being laid out. The names of those that died in WW1 are carved in stone panels on the eastern and western sides and those that died in WW2 were erected on bronze tablets on the southern and northern sides in 1952.



**Memorial M1**

---

<b>Memorial ID:</b>	<b>M2 - Memorial Arch, Eternal Flame and Memorial Walls</b>
<b>Material used:</b>	Sandstone on a Trachyte base with polished Trachyte panels.
<b>Condition:</b>	Good.
<b>Content:</b>	<b>Memorial arch 1926:</b> Inscription of the names of men and women of the Wagga district that served during WW1. <b>Eternal Flame 1991:</b> <b>Memorial Walls 1991:</b> The Honour Roll and Memorial Roll. The plaques on the walls are for the following: <ul style="list-style-type: none"><li>- Korea 1950 -1954</li><li>- Malaya-Borneo 1948 -1960, 1964 -1965</li><li>- Vietnam (Supreme sacrifice) 1962 -1973</li><li>- WW II (Supreme sacrifice)</li><li>- Anglo Boer War 1899 -1902</li><li>- Womens Services</li><li>- Plaque with additional names not included on others.</li></ul>

## Victory Memorial Gardens Asset Inventory: Memorials & Plaques

---

**Memorial ID:** M3  
**Material used:** Brick with bronze plaque  
**Condition:** Bricks lifting and cracked. Evidence of scaring to the base of the memorial tree.  
**Content:** This tree was planted by Lt Gnr Sir Phillip Bennett KBE, AO OSO chief of the general staff on 24/1/84 to commemorate the centenary of birth at Wagga Wagga Lake Albert on 24/1.1884 of Field Marshall Sir Thomas Albert Blamey GBE, KCB, CMG, DSO,ED 1884-1951. Australian military Forces 1906 – 1951. General Officer commanding imperial forces 1939-1942, Commander in Chief. Australian military forces 1942 – 1945. Commander allied land forces south west pacific area 1942 1945

MH Gissing Mayor  
ER Ellis Town Clerk



Memorial M3

## Victory Memorial Gardens Asset Inventory: Memorials & Plaques

---

<b>Memorial ID:</b>	<b>M4</b>
<b>Material used:</b>	Brick with bronze plaque. Aeroplane propeller blade and white pebbles.
<b>Condition:</b>	Good condition. Some brick paver surrounds lifting due to tree roots.
<b>Content:</b>	<p>50<sup>th</sup> anniversary of RAFF Base Forrest Hill which commenced operations 1<sup>st</sup> July 1940.</p> <p>The following is immortalized</p> <ul style="list-style-type: none"><li>- trained pilots for WWII: Ansons beaufighters and wirraways once filled the skies</li><li>- aircraft were repaired: like ansons, beaufighters, beauforts, boomerangs, kitty hawks, mitchells, vengeances and ventras.</li><li>- Since technical training involving apprentices and adults has been performed: other non technical training is now a feature</li><li>- The base is an integral part of the city. Its airmen continue to be contributing members of the community</li><li>- Those who served at the base are remembered.</li></ul>

30<sup>th</sup> June 1990

Alderman Pat Brassil, Mayor Group Captain K.V. Griffin  
Officer Commanding  
RAAF Wagga Base



**Memorial M4**

## Victory Memorial Gardens Asset Inventory: Memorials & Plaques

**Memorial ID:** M5  
**Material used:** Brick paver with bronze plaque. 3" motor gun on a slate platform.  
**Condition:** Good condition. Some bricks slightly lifted.  
**Content:** This monument commemorates the 50<sup>th</sup> anniversary of the Kapooka military area which commenced operations 1 May 1942.

Pat Brasil Mayor  
Col G.W. Hurford Commander Kapooka Military Area



**Memorial M5**

## Victory Memorial Gardens Asset Inventory: Memorials & Plaques

---

<b>Memorial ID:</b>	<b>M6</b>
<b>Material used:</b>	Brick paver with feature pattern. Green anchor and bronze plaque.
<b>Condition:</b>	Lettering fading on the plaque. Pavers slightly raised and sink spots.
<b>Content:</b>	Commemoration of active service during the 1939-1945 World War of HMAS Wagga. Corvette J315 of the Royal Australian Navy commissioned in Dec 1942 and served with distinction until November 1945 in the Coral Sea, New Guinea the South Pacific and Hong Kong, Milne Bay, Phillipines, Balikpapan, LaeFinsccaffen, Admirality Island, Subic Bay, Oro Bay, Biak Morotai, Leyte, Sansapor, Lidna Straights Hong Kong. Dedicated in honour of all who served by the HMAS Wagga association.



**Memorial M6**

## Victory Memorial Gardens Asset Inventory: Memorials & Plaques

---

**Memorial ID:** M7  
**Material used:** Concrete sand bags, bronze plaque on concrete base with paver surrounds  
**Condition:** Cracked pavers, cracked mortar bed.  
**Content:** This monument is dedicated to the national servicemen, citizens military forces and reserves of Wagga Wagga district. The National Servicemen's Ode

Have you forgotten yet?

Let us remember those who have served Australia with pride and dedication. Look up, and swear by the green of spring that you will never forget we will never forget.

51 National Servicemen's Association 72

Navy Army Airforce.



**Memorial M7**

---

**Memorial ID:** M8  
**Material used:** Granite boulder with bronze plaque inset. Paver surround.  
**Condition:** Pavers lifting.  
**Content:** This plaque was placed on site as part of the city of Wagga Wagga Australia remembers and is dedicated to those members of the civil construction corps, land army protective services volunteer aid detachment and the volunteer defence corps who by their outstanding contribution on the home front contributed to ultimate victory in WW2. Unveiled by the mayor of Wagga Councillor Peter Dale 11 Nov 1995.



**Memorial M8**

## Victory Memorial Gardens Asset Inventory: Memorials & Plaques

---

<b>Memorial ID:</b>	<b>M9</b>
<b>Material used:</b>	Brick wall, figurine, 2 rose bushes, bronze plaque set in bricks.
<b>Condition:</b>	Lettering fading.
<b>Content:</b>	<p>International Peace Year 1986. This garden of peace roses was established to mark Wagga Wagga's recognition of the international year of peace 1986. Contributions towards the establishment of this garden were received from Mr G Sturzaker B.E.M Wagga Sub branch RSL citizens of Wagga. The Peace Rose originally named MMW. A MEILLAND was developed by Francis Meilland in France just prior to the outbreak of World War 2. Bud wood from the rose was smuggled out of Nazi occupied France on the last clipper to America where it was produced in numbers to be generally released at the end of the war as the peace rose. At the first session each delegate received a peace rose bloom a fitting symbol to express the hope for world peace.</p> <p>This garden was officially opened by ALD R.F Harris Mayor of Wagga on 15<sup>th</sup> August 1986.</p>



**Memorial M9**

---

<b>Memorial ID:</b>	<b>M10</b>
<b>Material used:</b>	Marble table, bronze sculpture brick base, paver surround with 4 bronze plaques.
<b>Condition:</b>	Good.
<b>Content:</b>	<p>SANDAKAN</p> <p>This memorial was dedicated by Father John Brendan Rogers, OFM, eighth division A.I.F Chaplin, Sandakan &amp; Kuching. This memorial was unveiled by Hon Con Sciacca M.P minister for veterans affairs 28<sup>th</sup> August 1994</p>

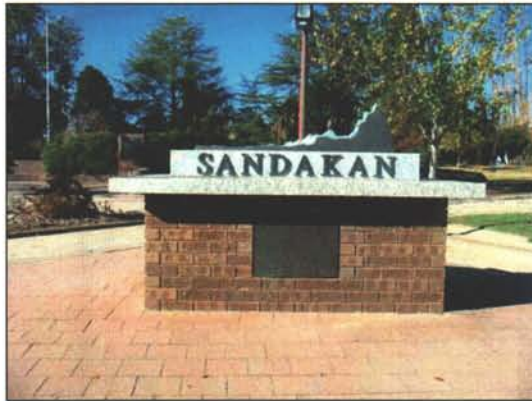
1800 Australians of the 8<sup>th</sup> division A.I.F and 750 British troops. They fought Gallantly in the defence of Malaya and Singapore during WWII. Following the fall of Singapore, they became prisoners of the Japanese and were transported to Sandakan in British North Borneo in 1942 to construct an airfield where 900 died of ill treatment. By the end of 1944 when allied forces were within striking distance of Sandakan, the Japanese command ordered the removal of prisoners inland to Ranau



## Victory Memorial Gardens Asset Inventory: Memorials & Plaques

---

165 miles west on 29<sup>th</sup> Jan 1945. 470 prisoners guarded by 500 Japanese marched toward Ranau. Those unable to carry on were killed. The second march comprising 532 prisoners left Sandakan on 29<sup>th</sup> May 1945 183 arrived at Ranau on 26<sup>th</sup> June 1945 only 8 survived from the first march. Of the 288 prisoners left at Sandakan there were no survivors. On 1 August 1945 the surviving 33 prisoners at Ranau were massacred. Six who escaped were rescued by special forces. This memorial honours those men who enlisted from the Southern region of NSW. We will remember them.  
Sandakan Memorial Foundation



Memorial M10

---

**Memorial ID:**

**Material used:**

**Condition:**

**Content:**

**M11**

Bronze plaque mounted on small piece of slate in a circular garden bed with a feature tree.

Slate slightly chipped on one corner.

Churchill Memorial tree planted 24<sup>th</sup> Feb 1965 by Gp. Capt N.F Lamb O.C RAAF base Wagga Wagga and Lt Col K.P Outridge CO Kapooka Military area.



Memorial M11

## Victory Memorial Gardens Asset Inventory: Memorials & Plaques

---

**Memorial ID:** M12  
**Material used:** Slate column with bronze sundial and plaque.  
**Condition:** Memorial in good condition. Ground surrounding memorial worn from pedestrian traffic.  
**Content:** This sundial garden was placed here in grateful recognition of what we owe to our pioneers and was unveiled on the 9<sup>th</sup> October 1938 by ten of their descendants of the 4<sup>th</sup> and 5<sup>th</sup> generations.



Memorial M12

## Victory Memorial Gardens Asset Inventory: Memorials & Plaques

---

**Memorial ID:** M13  
**Material used:** Flagpole.  
**Condition:** Good.  
**Content:** The flagpole was placed on the assembly lawn in 1931. Flagpole derrick ex HMAS Sydney. Struck by a shell from German cruiser Emden off Cocos Islands, 9<sup>th</sup> November, 1914 EE Collins Mayor and Chairman.



Memorial M13

# Victory Memorial Gardens Asset Inventory: Seats

## IMAGES:



Type 1: Main street seats:



Type 2: Timber slat – tubular steel frame



Type 3: Timber slat – square steel frame



Type 4: Timber slat picnic table



Type 5: Moveable metal slat seat



Type 6: Concrete picnic table



Type 7: Ornate concrete/tile seat

## Victory Memorial Gardens Asset Inventory: Seats

Seat ID	Seat Type	Condition/Comments
S1	<b>Type 1:</b> Main street seat. Timber slat and metal frame	Excellent/new
S2	<b>Type 2:</b> Timber slat x 5, green tubular steel frame, mid point attachment of legs	Good/ Timber and steel colour weathered
S3	<b>Type 3:</b> Timber slat x 10, black square steel frame, attachment of legs to each end.	Good
S4	<b>Type 3:</b> Timber slat x 10, black square steel frame, attachment of legs to each end.	Good
S5	<b>Type 2:</b> Timber slat x 5, green tubular steel frame, mid point attachment of legs, paver base	Good/ Timber and steel colour gone
S6	<b>Type 2:</b> Timber slat x 5, green tubular steel frame, mid point attachment of legs, paver base	Good/ Timber and steel colour gone
S7	<b>Type 2:</b> Timber slat x 5, green tubular steel frame, mid point attachment of legs, paver base	Good/ Timber and steel colour weathered
S8	<b>Type 2:</b> Timber slat x 5, green tubular steel frame, mid point attachment of legs, paver base	Good/ Timber and steel colour weathered
S9	<b>Type 2:</b> Timber slat x 5, green tubular steel frame, mid point attachment of legs, paver base	Good/ Timber and steel colour weathered
S10	<b>Type 2:</b> Timber slat x 5, green tubular steel frame, mid point attachment of legs, paver base	Good/ Timber and steel colour weathered
S11	<b>Type 5:</b> Moveable metal slat, green.	Good
S12	<b>Type 4:</b> Timber slat picnic table 2 benches, black square steel frame, paver base	Good
S13	<b>Type 4:</b> Timber slat picnic table 2 benches, black square steel frame, paver base	Good
S14	<b>Type 3:</b> Timber slat x 10, black square steel frame, attachment of legs to each end.	Good
S15	<b>Type 6:</b> Concrete picnic table 2 benches, green yellow, slate surround	Shabby
S16	<b>Type 5:</b> Moveable metal slat, green.	Good
S17	<b>Type 7:</b> Ornate concrete/tile seat	Fair
S18	<b>Type 7:</b> Ornate concrete/tile seat	Fair
S19	<b>Type 6:</b> Concrete picnic table 2 benches, green yellow, slate surround	Shabby
S20	<b>Type 2:</b> Timber slat x 5, green tubular steel frame, mid point attachment of legs	Good/ Timber and steel colour weathered

## Victory Memorial Gardens Asset Inventory: Seats

---

<b>S21</b>	<b>Type 2:</b> Timber slat x 5, green tubular steel frame, mid point attachment of legs	Good/ Timber and steel colour weathered
<b>S22</b>	<b>Type 2:</b> Timber slat x 5, green tubular steel frame, mid point attachment of legs	Good/ Timber and steel colour weathered
<b>S23</b>	<b>Type 2:</b> Timber slat x 5, green tubular steel frame, mid point attachment of legs	Good/ Timber and steel colour weathered
<b>S24</b>	<b>Type 2:</b> Timber slat x 5, black tubular steel frame, mid point attachment of legs	Good/ Timber and steel colour weathered
<b>S25</b>	<b>Type 2:</b> Timber slat x 5, black tubular steel frame, mid point attachment of legs	Good/ Timber and steel colour weathered
<b>S26</b>	<b>Type 2:</b> Timber slat x 5, green tubular steel frame, mid point attachment of legs	Good/ Timber and steel colour weathered
<b>S27</b>	<b>Type 2:</b> Timber slat x 5, green tubular steel frame, mid point attachment of legs	Good/ Timber and steel colour weathered

## Victory Memorial Gardens Asset Inventory: Lights

---

### IMAGES:



Type 1: Metal pole ornate lamp



Type 1: - red green peeling paint



Type 2: Concrete pole ornate lamp



Type 3: Street light



Type 4: Street light

## Victory Memorial Gardens Asset Inventory: Lights

---

Light ID	Light Type	Light Condition/Comments
L1	Type 1: Metal pole, green and red ornate lamp	Paint chipped and peeling
L2	Type 1: Metal pole, green and red ornate lamp	Paint chipped and peeling
L3	Type 1: Metal pole, green and red ornate lamp	Paint chipped base paint peeling
L4	Type 1: Metal pole, green and red ornate lamp	Paint chipped and peeling
L5	Type 1: Metal pole, green and red ornate lamp	Paint chipped and peeling
L6	Type 1: Metal pole, green and red ornate lamp	Paint chipped and peeling
L7	Type 3: Street light: Metal	-
L8	Type 4: Street light: Concrete	-
L9	Type 2: Concrete pole, ornate lamp	Good
L10	Type 2: Concrete pole, ornate lamp	Good
L11	Type 4: Street light: Concrete	-
L12	Type 2: Concrete pole, ornate lamp	Good
L13	Type 2: Concrete pole, ornate lamp	Good
L 14	Type 2: Concrete pole, ornate lamp	Good
L 15	Type 2: Concrete pole, ornate lamp	Good
L 16	Type 1: Metal pole, green and red ornate lamp	Good
L 17	Type 1: Metal pole, green and red ornate lamp	Good
L 18	Type 1: Metal pole, green and red ornate lamp	Good



## Victory Memorial Gardens Asset Inventory: Bins

---

### IMAGES:



Type 1: Expose aggregate cylinder



Type 2: Exposed aggregate tapering cylinder



Type 2: - with alking symbol



Type 2: - with intact metal top



Type 3: Council wheelie bin



Type 4: Metal slat – metal inner

## Victory Memorial Gardens Asset Inventory: Bins

Bin ID	Bin Type	Bin condition/comments
B1	Type 1: Exposed aggregate concrete cylinder, metal inner	Shabby
B2	Type 2: Exposed aggregate concrete, tapering cylinder	Broken concrete
B3	Type 3: Council green wheelie bin, chained to light.	Good
B4	Type 1: Exposed aggregate concrete cylinder, metal inner	OK/ top slightly broken
B5	Type 1: Exposed aggregate concrete cylinder, metal inner	Concrete broken, metal reinforcing exposed.
B6	Type 4: Metal slat green, yellow metal inner	Very shabby, bent,
B7	Type 2: Exposed aggregate concrete, tapering cylinder	
B8	Type 2: Exposed aggregate concrete, tapering cylinder	Good, walking track symbol attached, dirt surrounds
B9	Type 2: Exposed aggregate concrete, tapering cylinder	Good, paver surrounds
B10	Type 2: Exposed aggregate concrete, tapering cylinder	Slanting, walking track symbol attached, eroded surrounds
B11	Type 3: Council green wheelie bin, chained to light.	OK
B12	Type 3: Council black wheelie bin, chained to light.	Broken plastic
B 13	Type 4: Metal slat, metal inner	OK
B 14	Type 2: Exposed aggregate concrete, tapering cylinder	Good, intact metal top, concrete surround
B 15	Type 2: Exposed aggregate concrete, tapering cylinder.	Good, intact metal top, in garden bed
B 16	Type 1: Exposed aggregate concrete cylinder, metal inner	Good, concrete surround
B 17	Type 2: Exposed aggregate concrete, tapering cylinder	Ok, in garden bed.
B 18	Type 1: Exposed aggregate concrete cylinder, metal inner	Smaller version of Type 1 bin.
B 19	Type 1: Exposed aggregate concrete cylinder, metal inner	Shabby, cracked bent broken metal top.
B 20	Type 2: Exposed aggregate concrete, tapering cylinder	OK

## **Appendix F**

### ***Elements that were once in the garden and have been removed***

#### Pergola

A pergola was erected to the west of the memorial. It is proposed to plant evergreen creepers about the structure to form a bower. It is depicted on Kerr's' plan but it is unclear whether it was fully realized.

It is not considered appropriate to install more structures along this façade of the Gardens as it is already quite crowded.

#### Fencing

There is reference to fencing around the VMG (along the Park boundaries of Morrow and Baylis Streets) in the Daily Advertiser in 1929, although in consultation, it is unclear when there may have been a fence around the site<sup>1</sup>.

Kerr's plan depicts a typical detail of a fence and gate, but it is unclear if it was ever installed.

The use of fencing around parks fell from favour as they were seen to restrict free access to public property<sup>2</sup>.

It is not considered appropriate to (re) instate the fencing around the Gardens.

#### Fern House

A Fern House was completed March 21, 1934. It existed towards the end of Morrow Street and the corner of what is now Ivan Jack Drive.

---

<sup>1</sup> Personal Communication, Harold Fife

<sup>2</sup> Oxford, op. cit., p.491

"The fernery in which beautiful hanging fern baskets, stag and elk horns together with rockeries etc. forms a cool shady and restful retreat in the summer months.." (Daily Advertiser December 21, 1937)

It is not known when the fernery was removed, but it is not considered appropriate to reinstate it, as the level of labour required is beyond the number of staff working in the Gardens.