

Umbango Creek Bridge: your questions answered

What's happening?

In August 2020, we discovered that the Umbango Creek Bridge was showing signs of significant structural compromise.

In order to keep everyone safe while we investigated, we restricted traffic flow to one central lane, installed a give-way sign to regulate traffic, and reduced the speed limit to 60km per hour. The existing load limit remained the same.

We're currently in the process of engaging a specialist bridge engineer to consult on the bridge.

Why bring in a specialist?

Bridges are complicated and need specialist advice. Because any potential works we undertake will be at a considerable cost, and involve a period of disruption to road users, we want to make sure we have the best advice before starting.

How long will it take?

This process may take 12 to 24 months.

Umbango Creek Bridge Timeline	
Action	Timeframe / cost
Specialists will: <ul style="list-style-type: none"> conduct a comprehensive analysis of the bridge structure provide a report defining the issues affecting the bridge recommend a solution. 	<ul style="list-style-type: none"> Estimated duration 6-12 months
Depending on the specialist recommendation, Council will either:	
<ul style="list-style-type: none"> repair the existing bridge 	<ul style="list-style-type: none"> Estimated cost between \$500,000 and \$1 million. Intermittent bridge closures for approximately 6 months.
<ul style="list-style-type: none"> replace the bridge 	<ul style="list-style-type: none"> Estimated cost \$10 million. Council will apply for Australian Government funding. Full bridge closure with detours in place for approximately 6 months.

Thanks for your patience

We appreciate that restricting the bridge to one central lane at a slower speed is impacting your commute, and thank you for keeping to the speed limit and following the traffic sign directions.

We also appreciate that the two options we'll be considering for the bridge, either repair or replacement, will add travel time to your commute over a short to medium term.

As such, we're working to move the project along as quickly as we can, to provide you with a strong, safe bridge that will serve your community for decades to come.

Stay in touch

If you'd like to have a chat about the bridge, or any other road-related concerns, please give our Director Operations, Warren Faulkner a call on 0429 265 053 or email him at

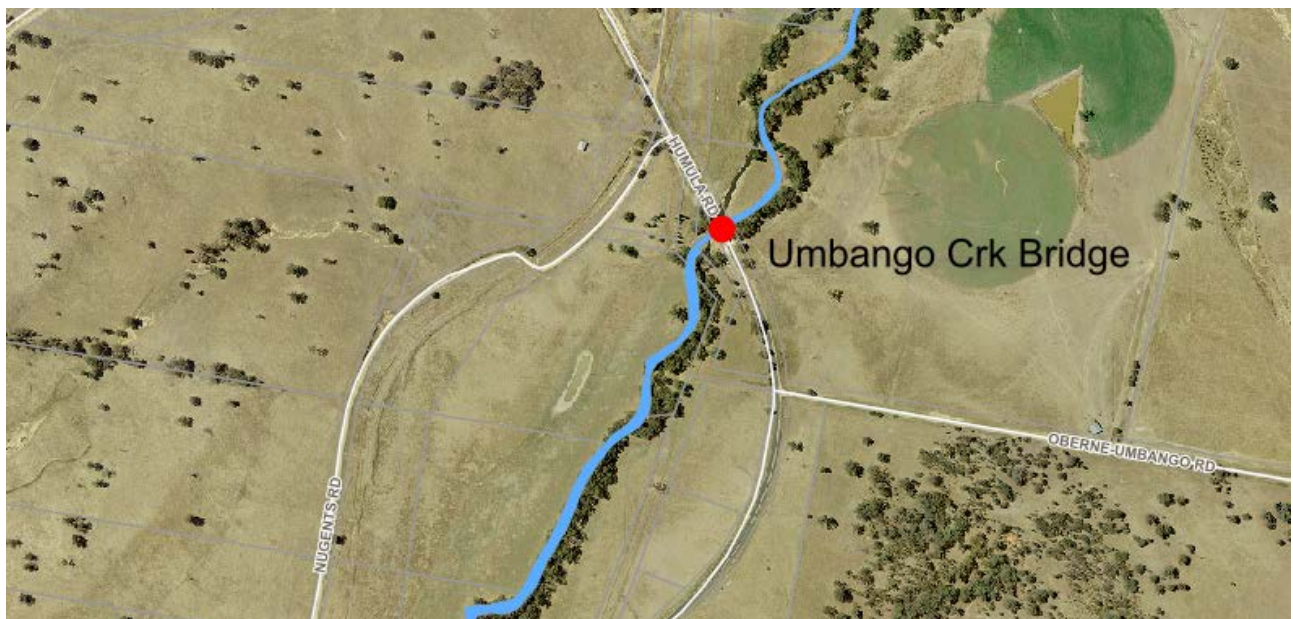
Faulkner.Warren@wagga.nsw.gov.au

Keeping you updated

We'll keep you updated with each stage of the Umbango Creek Bridge process.

For more information on our projects, please visit wagga.nsw.gov.au/projects

Works area



Traffic control plan

Humula Road - Umbango Bridge Maintenance Works

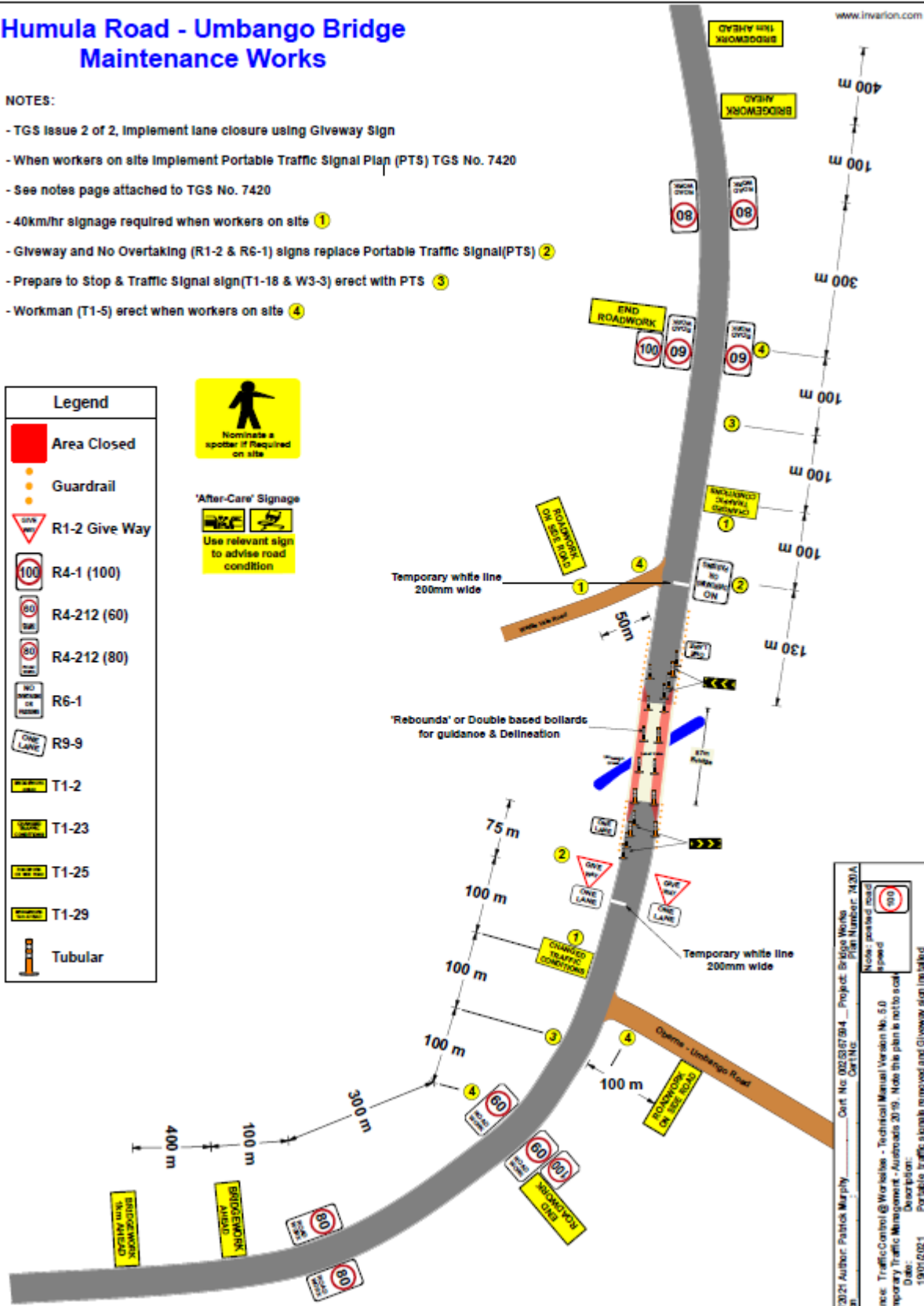
NOTES:

- TGS Issue 2 of 2, Implement lane closure using Giveaway Sign
- When workers on site Implement Portable Traffic Signal Plan (PTS) TGS No. 7420
- See notes page attached to TGS No. 7420
- 40km/hr signage required when workers on site ①
- Giveaway and No Overtaking (R1-2 & R6-1) signs replace Portable Traffic Signal(PTS) ②
- Prepare to Stop & Traffic Signal sign(T1-18 & W3-3) erect with PTS ③
- Workman (T1-5) erect when workers on site ④

Legend	
	Area Closed
	Guardrail
	R1-2 Give Way
	R4-1 (100)
	R4-212 (60)
	R4-212 (80)
	R6-1
	R9-9
	T1-2
	T1-23
	T1-25
	T1-29
	Tubular

After-Care' Signage

Use relevant sign to advise road condition



12021 Author: Patrick Murphy Cont No: 0023387914 Project: Bridge Works
 Plan Number: 74201A
 Date: Description: Portable Traffic Control and Giveaway Signage
 Note: portable area speed 90