

WAGGA WAGGA RIVERSIDE STAGE 2 SITE ANALYSIS & CONCEPT PLAN

PREPARED FOR
THE CITY OF WAGGA WAGGA
19 FEB 2019 - 26 MAR 2019
WORK-IN-PROGRESS



EXECUTIVE SUMMARY

PURPOSE OF THE REPORT

GHD and Urbis has been engaged by The City of Wagga Wagga Council to undertake the landscape and engineering works for Stage 2 of the Riverside Master Plan.

This design report has been prepared in collaboration with Council to inform and document the working concept for Stage 2.

The urban place analysis contained in this report outlines the context of the master plan, which is informed by previous studies, site visits and consultation with Council throughout the master planning process. It identifies the consolidated opportunities and challenges for the site and provides directions for the Riverside Stage 2 design. The design response for Stage 2 is underpinned by clear design objectives, strategies and themes already in place from the previous studies to ensure alignment with the vision for Riverside and the needs of the community.

Following the site visit a sketch concept was provided to Council that illustrate the design strategies along with precedent examples of parks in the Wagga Wagga locality and in previous Urbis designs to inform Council of the direction moving forward.

This feedback was consolidated into a preferred illustrative concept plan which forms the design response in the latter section this document, from which feedback from the community is sought. Following this feedback, detailed technical studies will be undertaken by GHD to support and refine the design documentation for the Riverside Stage 2.

PROJECT TEAM:

Urbis | Landscape Master Plan

GHD | Engineering

Cover Page: Rookhampton Riverside by Urbis

© Urbis 2018

This publication is subject to copyright. Except as permitted under the Copyright Act 1968, no part of it may in any form or by any means (electronic, mechanical, photocopying, recording or otherwise) be reproduced, stored in a retrieval system or transmitted without prior written permission. Enquiries should be addressed to the publishers.





CONTENTS

1.0 BACKGROUND REVIEW 4

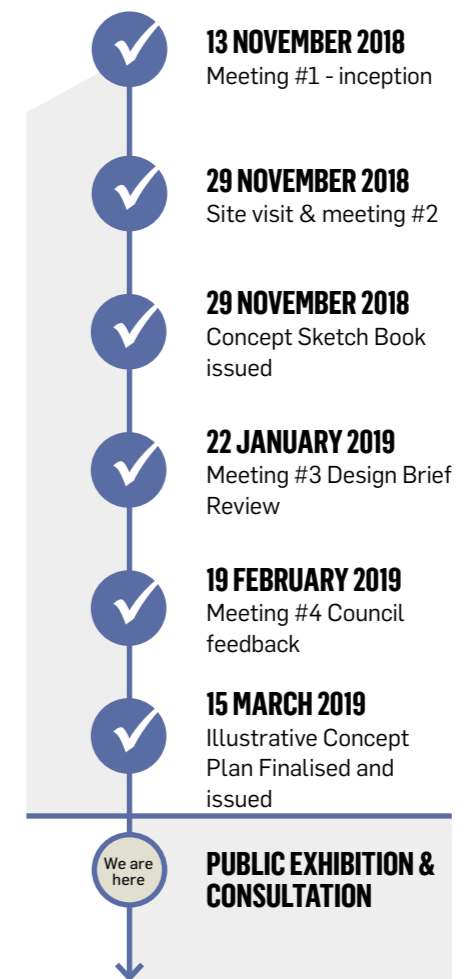
1.1	RIVERSIDE MASTER PLAN 2010	4
1.2	MURRUMBIDGEE RIVERSIDE MASTER PLAN	9
1.3	CONTEXTUAL SNAPSHOT	12
	1.3.1 Urban Context Analysis	12
	1.3.2 Site Visit & Photographic Audit	16
	1.3.3 Local Park Precedents	19
	1.3.4 Landscape Planting - Local Examples	21
1.4	SITE ANALYSIS	23

2.0 DESIGN RESPONSE 24

2.1	RETURN BRIEF	24
2.2	PLACE MAKING ELEMENTS	25
2.3	DESIGN STRATEGY	26
2.4	DESIGN THEMES	27
2.5	SKETCH CONCEPT PLAN	28
2.6	ILLUSTRATIVE CONCEPT PLAN	29
2.7	ACCESS & CIRCULATION	30
2.8	DESTINATIONS	31
2.9	PROGRAMS	32
2.10	PROJECT EXAMPLES	33
2.11	CAPACITY STUDY	38

PROJECT TIMELINE

The following timeline outlines the work-in-progress project dates and meetings for Stage 2 Riverside Master Plan undertaken so far.



1.0 BACKGROUND REVIEW

1.1 RIVERSIDE MASTER PLAN 2010

FIVE OBJECTIVES AND STRATEGIES FOR THE BEND PRECINCT



1: RIVERSIDE REGENERATION

KEY OBJECTIVES OF THE MASTER PLAN

- Enhancing the city's open space, landscape and recreation values through re-connection with the river;
- Building a more sustainable future through recovering important natural city - river linkages and environmental values; and
- Enhancing cultural, academic, heritage and aesthetic engagement afforded by re-connection of the city with the river. The Strategic Master Plan translates the strategies and actions identified in the Strategic Framework.

The Bend

The city's space and place of celebration. Bringing back the activities to the bend and the beach. This will be a place for festivals and celebrations as well as recreation and living on the riverside. New services in purpose built facilities will support the jazz festival and other celebrations. An extension of the escarpment on the edge of the church hill will create a city plaza overlooking the river and beach.

Specific Activities Suggested:

- Remove Caravan Park
- Upgrade Wagga Beach
- Grassed terraces and event space
- Bike and boat hire

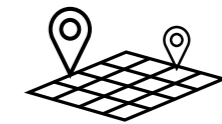


2: LANDSCAPE MANAGEMENT ZONES

The Bend as Urban Park

High/moderate use and management

- Natural nodes –Wagga Beach, the Rocks
- City common /unstructured active recreation areas
- BBQ and picnic facilities
- Multi-purpose play
- Re-vegetation to river corridor
- Managed water feature
- Irrigated grass (recycled water)
- Music /band areas
- Grassed terraces for large community events
- Viewing areas
- Car and bus parking adjacent
- Limit cycle ways through this high activity area



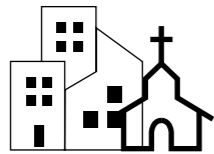
3: LAND USE OPPORTUNITIES

Main Strategies relevant to The Bend Precinct

- Deliver a parking strategy that minimises the intrusion of vehicles into inappropriate places while allowing access to the Riverside for those who need it that meets current and future demands.
- Create destinations for social and cultural activities
- Create opportunities for passive recreational activities
- Create opportunities for active recreational activities
- Create a place for visitors
- Create a place for events
- Encourage people to move around Riverside

Key Actions

- Relocate Caravan Park
- Upgrade Wagga Beach
- Grassed Terraces & event space
- Multimedia wall
- Bike and boat hire
- New playground



4: BUILT FORM OPPORTUNITIES

Main Strategies relevant to The Bend Precinct

- Create landmarks and iconic built forms to improve the legibility of Riverside
- Take advantage of underutilised space to increase activity and housing choice
- Utilise the levee to accommodate undercroft or sub-basement car parking

Key Actions

- Build a 'landmark' hotel on the Wagga Beach car park
- Build on the Wagga Beach car park adjacent the existing levee
- Ensure that the development on the Wagga Beach car park interacts directly with the levee top and utilises the level difference to incorporate semi-basement car parking



5: MOVEMENT AND ACCESS OPPORTUNITIES

Main Strategies relevant to The Bend Precinct

- Improve links, access and permeability to the riverside from the city and other adjacent places
- Create well used routes and circuits

Key Actions

- Improve pedestrian connectivity across streets adjacent the river
- Introduce pedestrian access to the top of the levee in high visibility locations such as at the end of the streets which intersect with it.
- Open the levee bank at key points to give views of the river and / or access to the riverside
- Create flexible circuits of various lengths for walkers, cyclists and horse riders of all abilities that link attractions in the city and on the riverside
- Create new paths along the eastern side of the river that in conjunction with new and improved crossings will create loops of various lengths
- Enable continuous access along the levee for its entire length

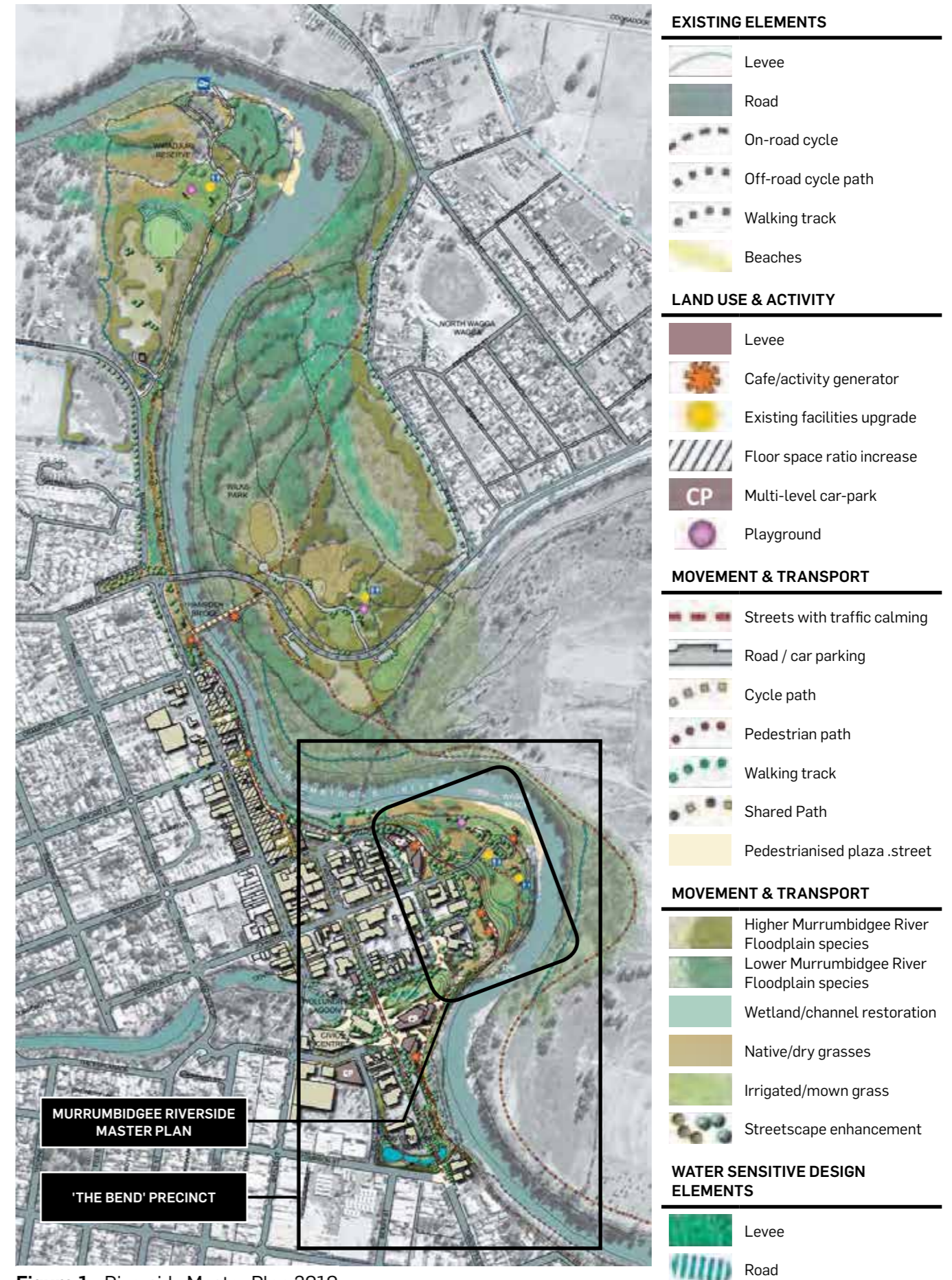


Figure 1 Riverside Master Plan 2010

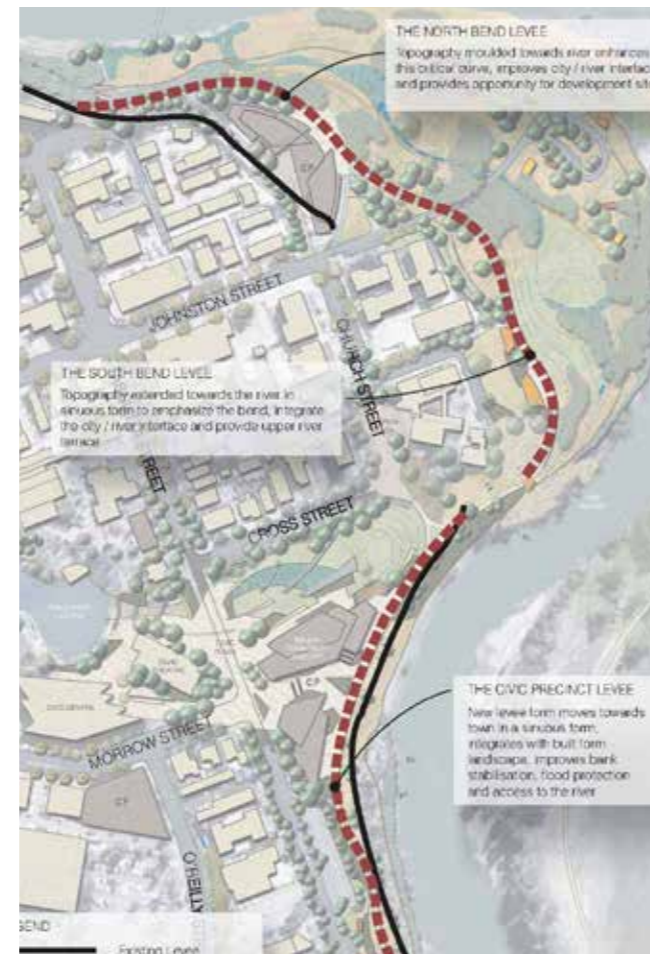
(Source: Riverside Wagga Wagga Strategic Master Plan, May 2010)

FOUR DESIGN THEMES



GREEN FINGERS

Reinforce the riverside presence into the urban zones and compliment the environmental objectives



INTEGRATED LEEVE

Reshape the levee to visually blend it with the natural and built setting



REINTERPRETING WATERWAYS

Visually reinforce natural ecological patterns as part of the unique riverine setting



PEARLS ON A STRING

Enhance connectivity, diversity of uses and nodes to create a continuous network of places and spaces based on the Movement and Access Strategy and Land Use/Built Form Strategy

(Source: Riverside Wagga Wagga Strategic Master Plan, May 2010)

THE BEND PRECINCT MASTER PLAN

ROLES & FUNCTIONS OF THE BEND PRECINCT WITHIN RIVERSIDE WAGGA WAGGA

Then Bend Precinct comprise significant areas such as the Civic Precinct and Wagga Beach which is a key connection to the river from the city.

This precinct also includes the church precinct situated on a prominent granite knoll with the Murrumbidgee River 'bending' around it. The vertical spires of the tight cluster of churches in this area add character to the cityscape and is a visually important feature within Wagga Wagga.

The Civic Centre is located towards the southern end of the precinct and interfaces Wollundry Lagoon, Baylis Street and Fitzmaurice Street. A large car park dominates the visual setting east of the centre creating a separation from the riverscape.

In summary, the Bend Precinct:

- Is a significant interface between city-centre and the river
- Has historical significance such as Wagga Beach the Church Precinct
- Is a key focal point with access to river
- Includes great spaces and places such as the Church Precinct, the Civic Centre and Wollundry Lagoon.

OBJECTIVE	STRATEGY	DESIGN PRINCIPLES
IMPROVE THE IDENTITY AND ATTRACTIVENESS OF THE CITY CENTRE	Exploit vistas to key landmarks	<ul style="list-style-type: none"> • Retain/ create open space corridors that allow significant vistas to be retained • Improve and protect views of the churches on the peninsula
	Allow the Master Plan to integrate the various precincts into a cohesive urban fabric	<ul style="list-style-type: none"> • Reinforce site specific attributes between precincts • Link Church Precinct with the Civic Centre/ City Centre through open space and vistas
	Create Civic and Community Spaces	<ul style="list-style-type: none"> • Introduce and formalise areas of assembly • Introduce plaza type spaces
	Spatially and visually integrate the Wollundry Lagoon with the riverside	<ul style="list-style-type: none"> • Introduce water elements (ephemeral or fixed) where possible; or as a minimum, planting to reflect riverine species to visually extend the lagoon towards the river
IMPROVE THE LEGIBILITY AND WAY FINDING WITHIN THE CITY CENTRE	De-emphasise local roads and streets and emphasise alternative models of transport such as walking	<ul style="list-style-type: none"> • Reduce width of streets • Introduce blisters at key locations • Introduce raised thresholds in key areas
	Visually reinforce key streetscapes along desire lines	<ul style="list-style-type: none"> • Introduce landscape and streetscape strategies and de-emphasise the vehicular environment
IMPROVE RELATIONSHIP BETWEEN CITY AND RIVERSIDE	Make Tarcutta Street appear as a destination at the interface with the Major Community Facility	<ul style="list-style-type: none"> • Introduce a raised threshold of considerable length to create a pedestrian oriented space
	De-emphasise levee as a built barrier	<ul style="list-style-type: none"> • Integrate levee with the built form to visually interrupt its continuity • Meander the alignment of the levee to create a softer appearance
IMPROVE THE QUALITY OF THE MICRO-ENVIRONMENT WITHIN THE CITY CENTRE	Exploit the natural beauty of the site	<ul style="list-style-type: none"> • Re-instate wetlands where appropriate • Introduce WSUD measures that beautify streetscapes and improve legibility
	Reduce or slow down traffic along Tarcutta Street to improve noise ambiance	<ul style="list-style-type: none"> • Introduce raised thresholds • Reduce the apparent width of the street
	Reduce flooding risks	<ul style="list-style-type: none"> • Identify opportunities that allow for potential future controlled flooding
IMPROVE THE QUALITY OF THE RIVER AND ITS SURROUNDING ENVIRONS TO ENCOURAGE FLORA AND FAUNA ETC.	Reduce steepness of batters to minimise erosion	<ul style="list-style-type: none"> • Introduce retaining walls to reduce the height of fill • Investigate moving levee to improve slopes, and introduce indigenous planting to river banks
	Introduce native species and eliminate exotics in a staged process	<ul style="list-style-type: none"> • Reinforce indigenous plant species • Remove unhealthy exotic trees; retain culturally significant
INTRODUCE SUSTAINABLE INITIATIVES	Promote a greener environment	<ul style="list-style-type: none"> • Introduce development controls that include rooftop gardens and green roofs
	Reduce carbon footprints	<ul style="list-style-type: none"> • Promote community and market gardens
	Promote pilot projects	<ul style="list-style-type: none"> • Work with Charles Sturt University to determine appropriate research and education facilities for Riverside - in particular WSUD potential
	Introduce pedestrian oriented strategies	<ul style="list-style-type: none"> • Create plaza type spaces with raised threshold
	Introduce WSUD	<ul style="list-style-type: none"> • Streetscape enhancements to minimise stormwater run-off • Convert piped drainage to above ground visible swales/ drainage where feasible to increase legibility of drainage systems

'THE BEND' PRECINCT SUMMARY

EXISTING CONDITIONS

The master plan recognised an opportunity to spatially redefine the area between Wollundry Lagoon and the Riverside, as well as improving the key landforms feature - the "bend" of the river, i.e. in the area around the existing caravan park and the beach.

The links between the city and the river are poor mainly as a result of the levee, land uses and buildings.

The visual and spatial analysis has been evaluated with a focus on the interrelationship between the Civic Centre, Wollundry Lagoon, the Church Precinct and the riverside.

KEY OPPORTUNITIES

- Create a 'Church Plaza' on Church Street
- Accentuate the hill as green spaced and limit vehicular traffic
- Large terraced grass space towards the river
- Mould topography to integrate the interface between the river and CBD
- Relocate the Playhouse theatre to open up key river interface -raise area to make the levee disappear
- Opportunity to create central focus of civic precinct and link to river

CONSTRAINTS & CHALLENGES

- Lack of vistas and view corridors towards key landmarks such as the church spires
- Lack of cohesive structure of built form to assist in orientation and city structure;
- Visual discontinuity between open spaces
- Lack of visual interaction between city centre and riverside. This is particularly exacerbated by the existing levee;
- Poor integration of the levee into the urban form and topography/ landscape;
- Buildings and land uses block vistas and views such as caravan park Playhouse etc.;
- Disparate land uses discourage a legible structure and way finding; and
- Wide roads emphasise vehicular traffic and create the appearance of a harsh environment.



Figure 2 The Bend Precinct Plan

(Source: Riverside Wagga Wagga Strategic Master Plan, May 2010)

1.2 MURRUMBIDGEE RIVERSIDE MASTER PLAN

The Murrumbidgee Riverside Master Plan was designed in 2012 by Somewhere Landscape Architects.

Construction of Stage 1 works began in 2014 and comprised of upgraded footpaths to improve connectivity over the site, a section of boardwalk, and additional BBQ areas.



Figure 3 Murrumbidgee Riverside Master Plan by Somewhere Landscape Architects

REVIEW EXISTING CONCEPTS

STAGE 1 ELEMENTS

LEGEND

- ① Upgrade/ formalise existing car park
- ③ Re-vegetate area
- ④ Shared sealed path to encourage connectivity throughout the site
- ⑤ Existing building. Future use to be determined
- ⑦ Proposed drop-off zone
- ⑧ Youth area. Utilise the already flat and hard surface of the existing road by including facilities that explore the benefits of sports and socialising
- ⑨ Retain playground
- ⑩ Community cooking and seating areas. Contains curved low rock wall with in built seats, shade structure and cooking facilities.
- ⑪ Existing toilets and canoe storage
- ⑫ Existing shed. Future use to be determined
- ⑬ Central cooking space which include BBQ, long stainless steel benches for food preparation and some seating.
- ⑮ Existing Phragmites to be removed to keep site lines open
- ⑲ Boardwalk segments for pedestrian use only (Stage 2). Provide decomposed granite path in the interim
- ⑳ Open informal grass space
- ㉕ Existing steep slope reshaped and reformed to create seating space/ amphitheatre environment
- ㉖ The 'Rocks' area to include interpretive signage and informal seating
- ㉗ Sculptural elements declare the presence of the river
- ㉘ Re-vegetate stormwater outlets as rock cascades
- ㉙ Caravan park boundary
- ㉚ Natural playground

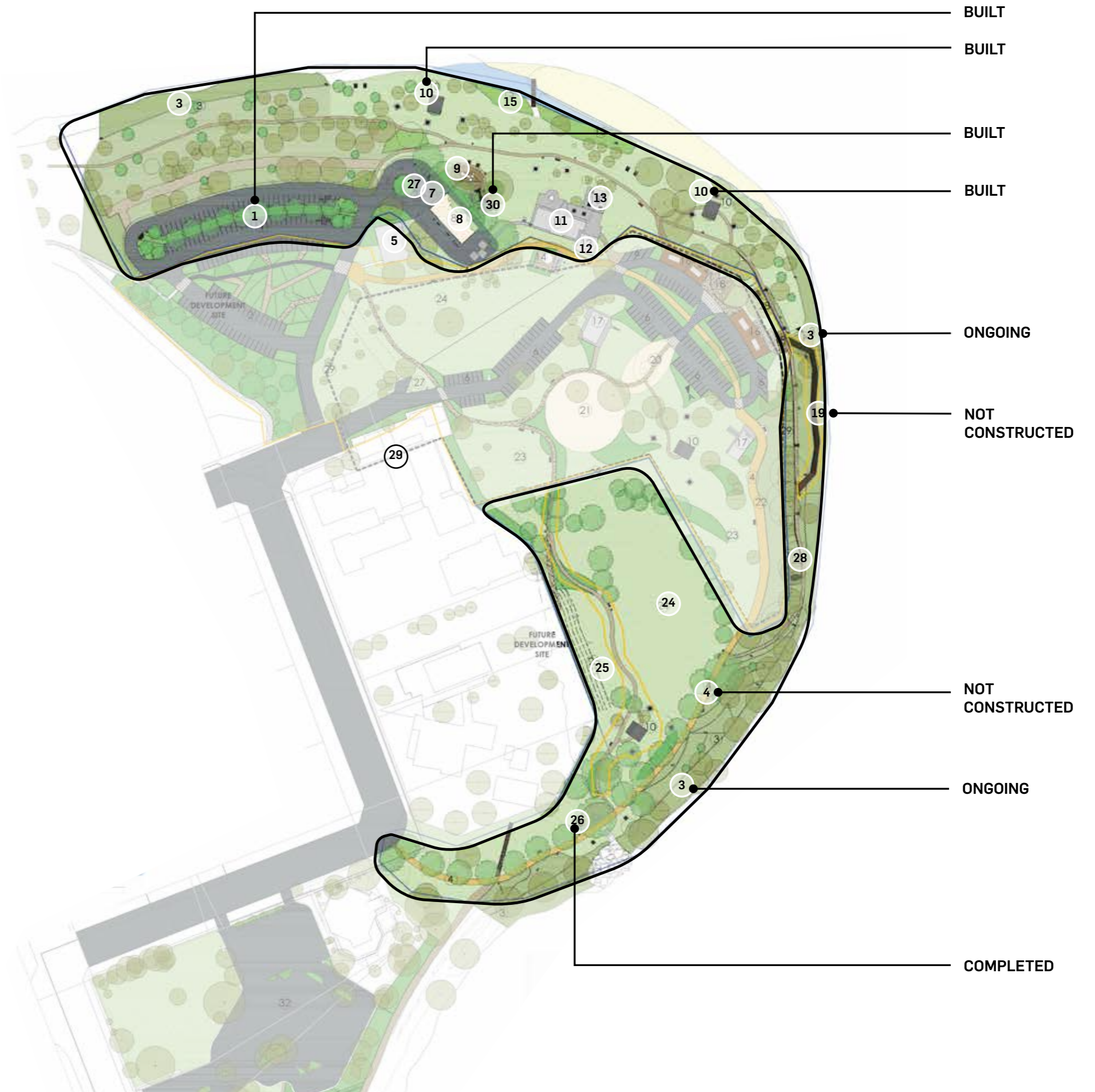


Figure 4 Murrumbidgee Riverside Master Plan by Somewhere Landscape Architects -Stage 1

STAGE 2 ELEMENTS

LEGEND

- ② Site of Future Development
- ④ Shared sealed path to encourage connectivity throughout the site
- ⑤ Existing building. Future use to be determined
- ⑥ Future additional parking
- ⑩ Community cooking and seating areas. Contains curved low rock wall with in built seats, shade structure and cooking facilities.
- ⑭ Existing services
- ⑯ Pop up shop precinct. Containers to be sited on existing powered caravan sites for access to power and water. Containers to be located on a wide generous deck to provide access from both the river and the car park with views out across the site. Include shade and seating along deck to achieve a boardwalk feel to the site.
- ⑰ Existing amenities to be upgraded
- ⑱ Low rock wall with recycled granite blocks to gain access down to the river
- ⑳ Possible area for the new Wagga 'Whizz' water park. Include sculptural elements that provide seasonal water play possibilities
- ㉑ Preferred location for regional playground facility
- ㉒ Road reused as bicycle path
- ㉓ Area to be re-vegetated as parkland space that enhances the riparian setting and extends the habitat potential across the site
- ㉔ Open informal grass space
- ㉗ Sculptural elements declare the presence of the river
- ㉘ Re-vegetate stormwater outlets as rock cascades
- ㉙ Caravan park boundary

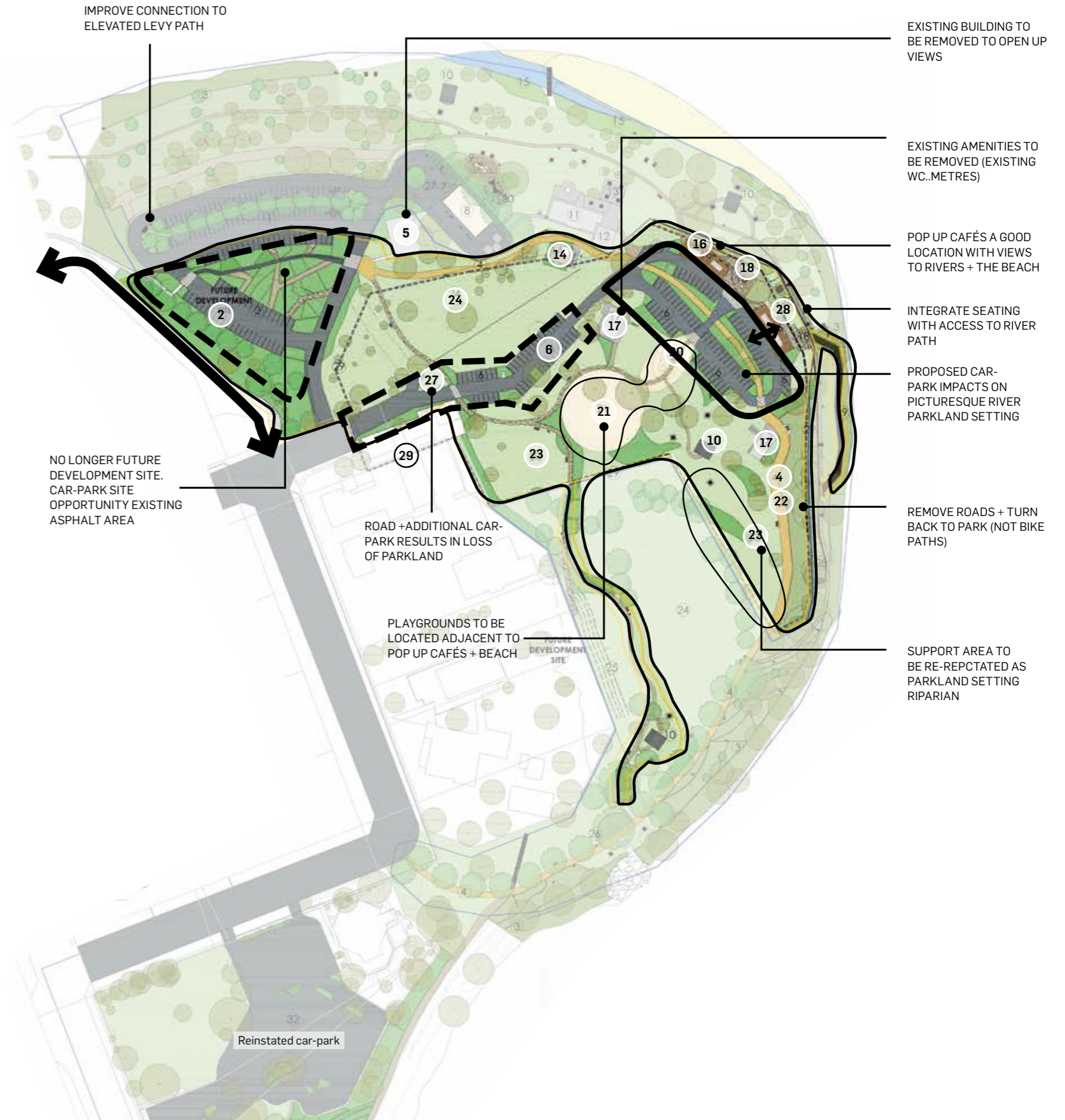


Figure 5 Murrumbidgee Riverside Master Plan by Somewhere Landscape Architects -Stage 2

1.3 CONTEXTUAL SNAPSHOT

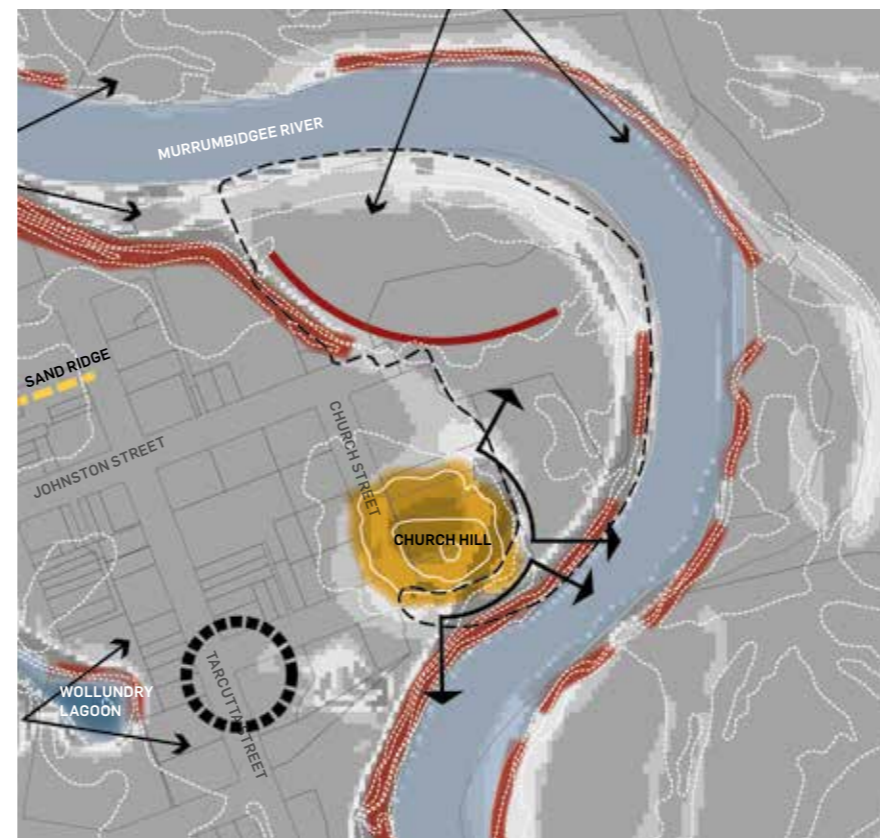
1.3.1 URBAN CONTEXT ANALYSIS

EXISTING LAND ZONING



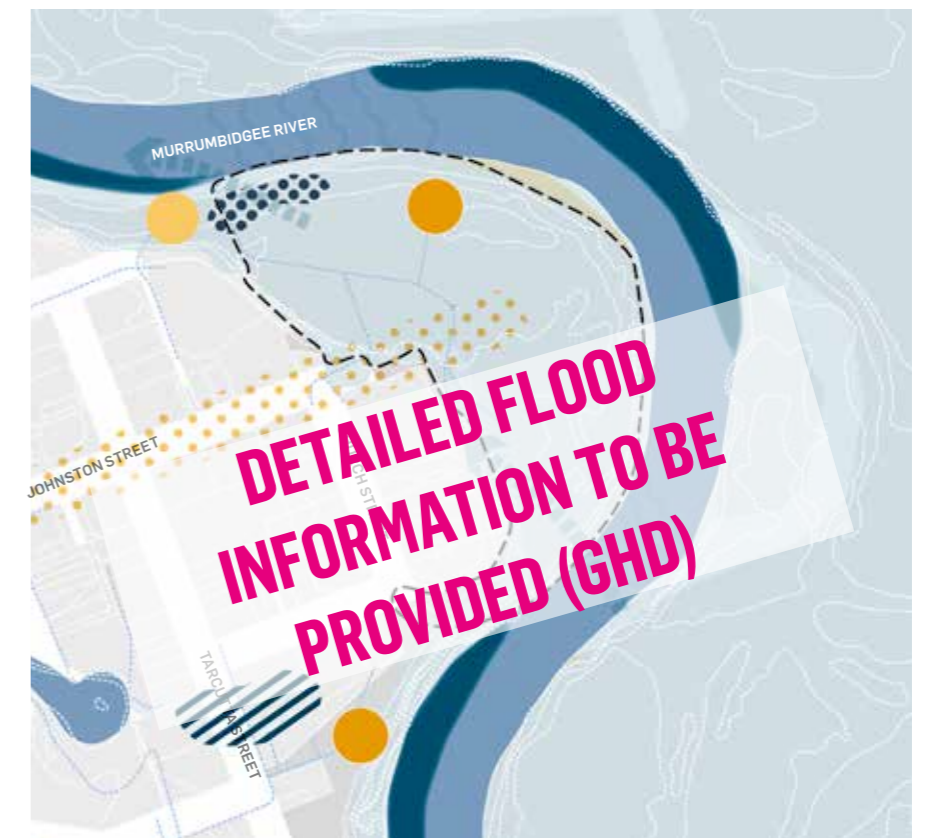
- LEGEND**
- Riverside Landscape (Study Area)
 - B3 Commercial Core
 - R3 Medium Density Residential
 - RE1 Public Recreation
 - RU1 Primary Production
 - E2 Environmental Conservation
 - SP1 Special Activities
 - SP2 Infrastructure

LANDFORMS & TOPOGRAPHY



- LEGEND**
- Riverside Landscape (Study Area)
 - ↔ Significant views
 - ↔ Panoramic views
 - Opportunity to create an Entrance Space
 - Prominent Landforms
 - Primary Ridgeline
 - Enclosing Slopes/Spaces
 - Steep Banks
 - Sunken Depression

FLOOD RISK AND WATER SENSITIVE URBAN DESIGN







- LEGEND**
- Riverside Landscape (Study Area)
 - Stormwater cascade/ bank erosion protection
 - Clean stormwater prior to release to river/ lagoon
 - Existing stormwater pipes
 - Evaluate opportunity for Infiltration area
 - Opportunity for ephemeral wetland
 - Opportunities for streetscape WSUD initiatives: swales / biofilters
 - Overbank flood flows
 - 1:100 yrs flood
 - Beach
 - Pool
 - Existing water systems

BIODIVERSITY



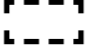




LEGEND

-  Riverside Landscape (Study Area)
-  Existing Water System
-  Existing Open Space
-  Terrestrial Biodiversity (area with biodiversity significance)

BUSHFIRE PRONE LAND








LEGEND

-  Riverside Landscape (Study Area)
-  Existing Water System
-  Existing Open Space
-  Buffer
-  High Risk Area

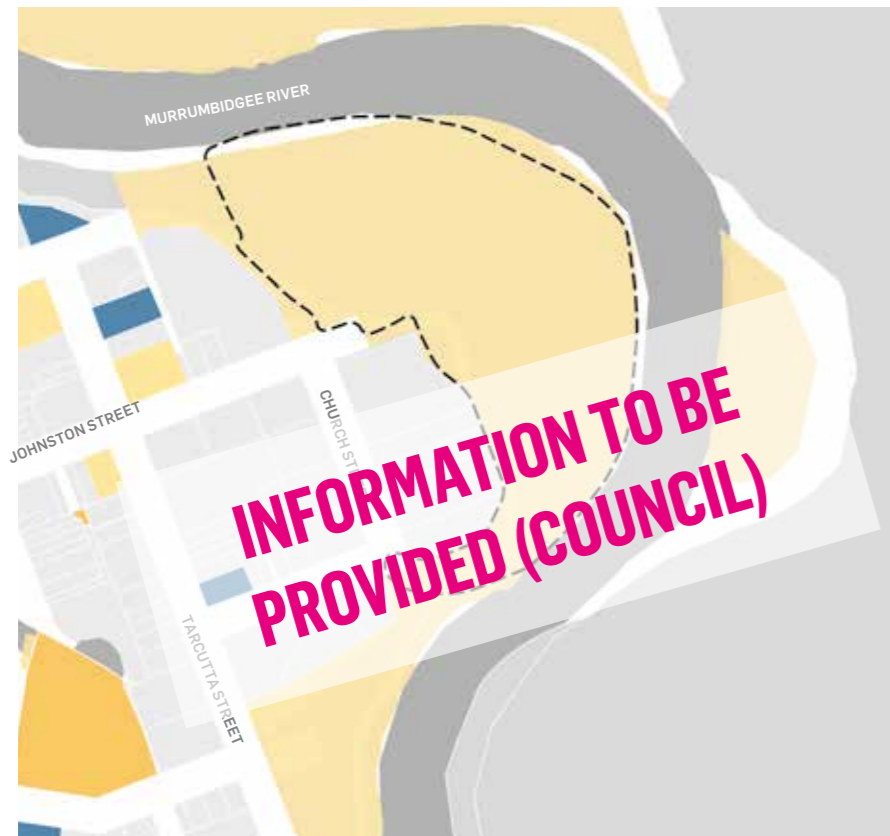
CULTURAL & HERITAGE



LEGEND

-  Riverside Landscape (Study Area)
-  Local Story Places: The Beach
-  Local Story Places: The Rocks
-  Local Story Places: Church Hill
-  Local Story Places: Convent

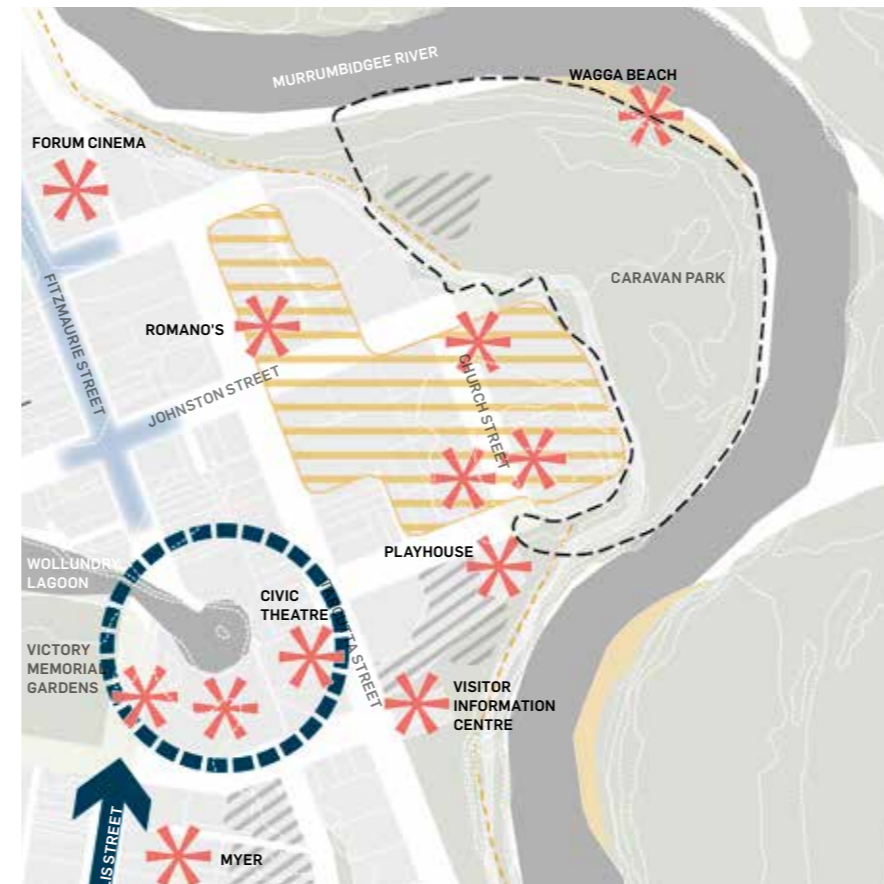
LAND OWNERSHIP



LEGEND

- Riverside Landscape (Study Area)
- Wagga Wagga City Council Land
- Crown Land
- Strata Titled Land
- Existing Water System

ACTIVITY GENERATORS



LEGEND

- Riverside Landscape (Study Area)
- Landmarks (Activity Generators)
- Civic Cluster
- Street with low level of activity
- Active Main Street
- Levee
- Parking
- Institutions Precinct
- Beach

VEHICULAR MOVEMENT AND PARKING



LEGEND

- Riverside Landscape (Study Area)
- Roundabout
- Main Retail & Commercial Street
- Major Roads/ Main Street Bypass
- Secondary Street Access
- Existing Car Parking Areas
- Existing Open Space
- Existing Water System

page left intentionally blank

1.3.2 SITE VISIT & PHOTOGRAPHIC AUDIT

The following site and context photos were taken at the site visit held on 29th November 2018 which was attended by Council, GHD and Urbis.

It comprises internal site photos, context photos as well as observations of local park examples recommended by Council.



Key Plan - Surrounding Context



St Michael's Cathedral and the wide reserve on Johnston Street



Church Street heritage items



Church Street heritage seniors living



Church Street heritage seniors living



Church Street heritage seniors living



Church Street heritage items



Charles Sturt University



Key Plan - Existing Riverside Programs / Destinations



The Beach



Riverside children's playground



Basketball Courts



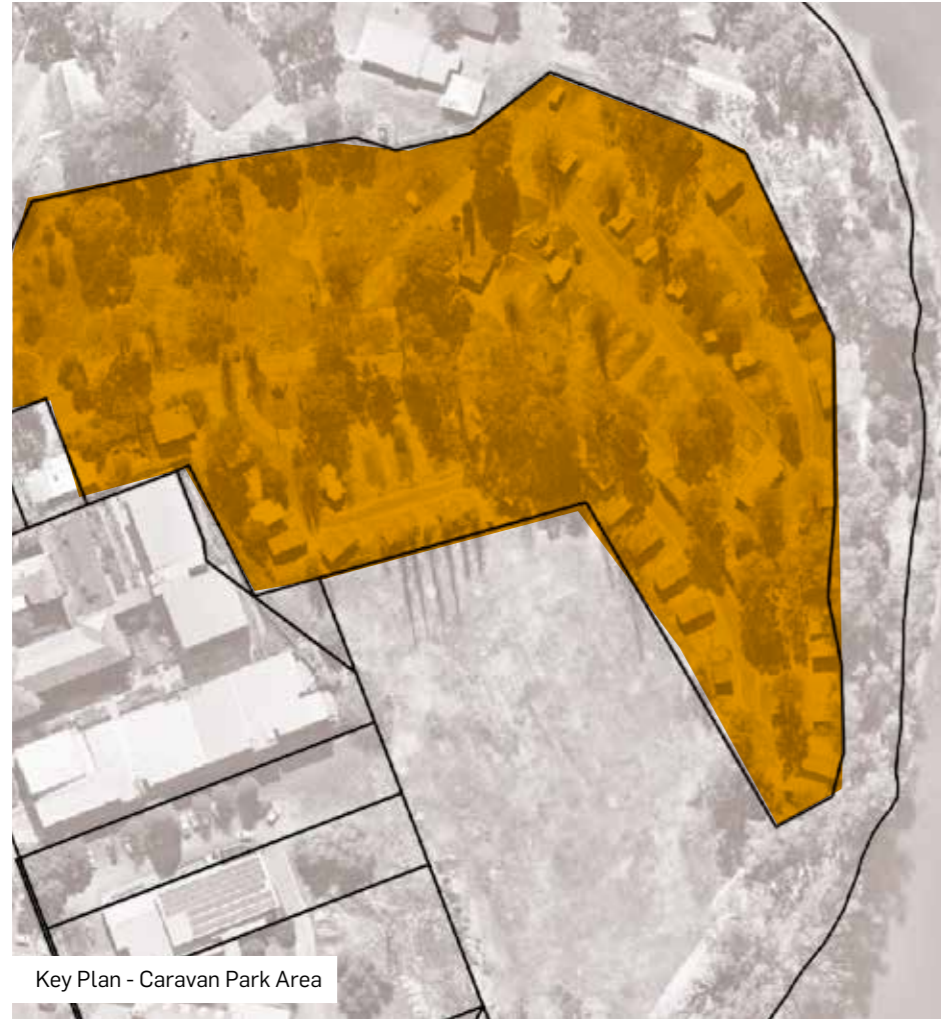
Stage 1 Barbeque Facilities



The Beach



Showers, toilet and swimming club



Key Plan - Caravan Park Area



View to riverside caravan park cabins looking south west (future location of container pods)



Caravan park central campsite



South western view to 14-20 Church Street in the background



Western view from caravan park to 14-20 Church Street in the background



Caravan park cabins looking southwards



Caravan park cabins from riverside pathway

1.3.3 LOCAL PARK PRECEDENTS



Apex Park play



Apex Park barbecue facilities



Wagga Wagga Botanic Gardens - entrance to zoo and aviary



Botanic Gardens - play space



Apex Park play equipment



Apex Park barbecue facilities & outlook to lake



Botanic Gardens - play space



Botanic Gardens - ping pong



Livvy's Place play equipment and design



Livvy's Place soft and hardscape response



Botanic Gardens - barbeque facilities



Livvy's Place play equipment and design



Livvy's Place play equipment and mural



Botanic Gardens - performance shell



Livvy's Place play equipment and shade sail

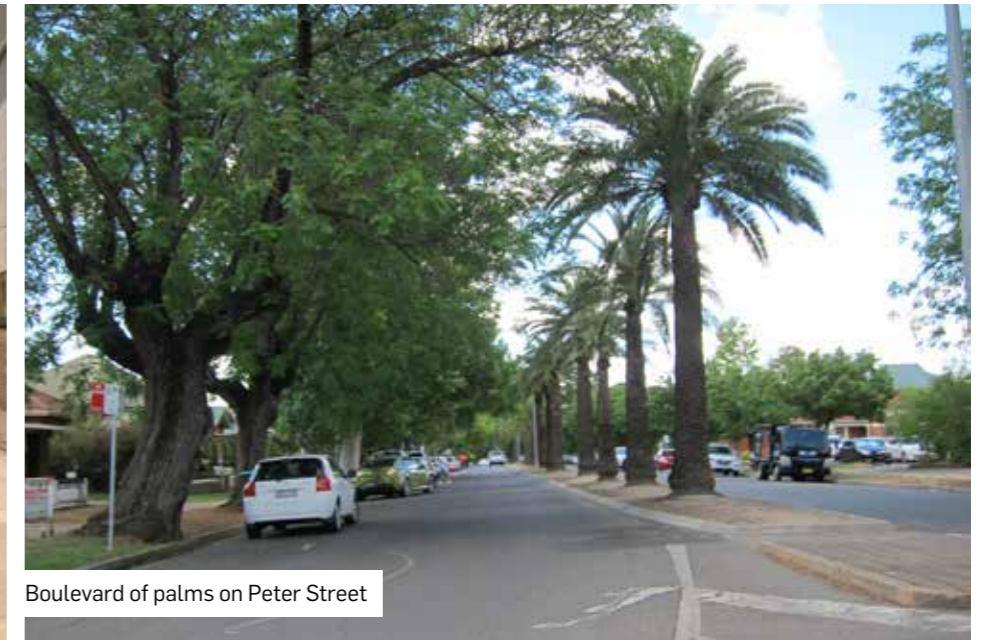


Livvy's Place furniture

1.3.4 LANDSCAPE PLANTING - LOCAL EXAMPLES



Civic Precinct landscape planting



Boulevard of palms on Peter Street



Victory Memorial Gardens



Civic Precinct landscape planting



Boulevard of palms on Peter Street



Church Street



Street planting



Street planting

RIVERSIDE - HISTORY



Wagga Wagga Beach 1963



Wagga Wagga Whiz



Wagga Wagga Beach Lifesaving Club



Wagga Wagga Beach sunbakers



Wagga Wagga Beach



Wagga Wagga Beach Lifesaving Club



Wagga Wagga Beach swimmers



Cadel Place Levee Bank 1960

1.4 SITE ANALYSIS

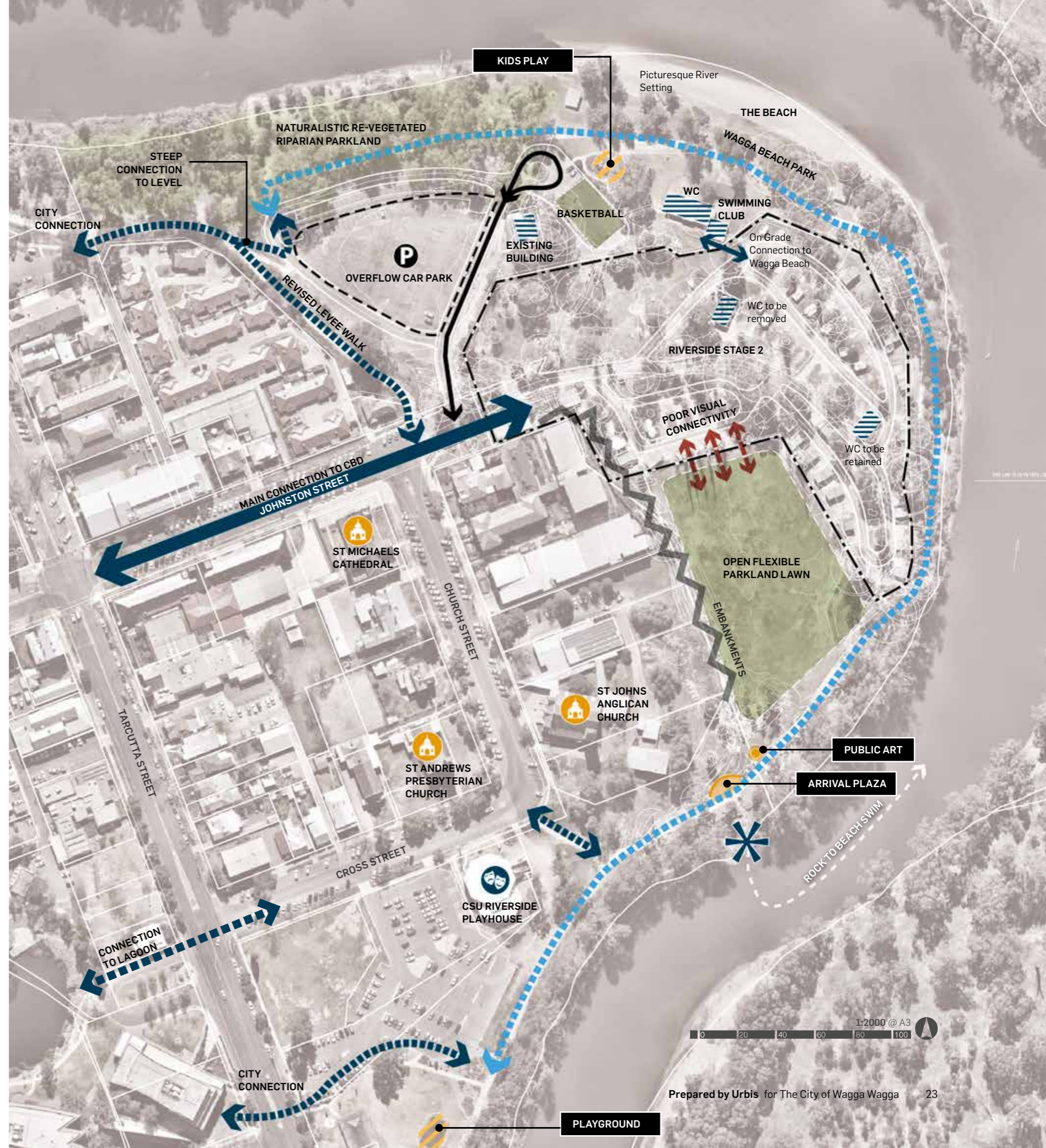


Figure 6 Wagga Wagga Site Analysis

2.0 DESIGN RESPONSE

2.1 RETURN BRIEF

An iconic recreation & cultural destination

Reinforce the relationship between the Murrumbidgee River & the City

Activate & Attract visitation

Event ready, base line infrastructure for events.

Capacity for multi-use

Improve public realm & City liveability

2.2 PLACE MAKING ELEMENTS



2.3 DESIGN STRATEGY



CELEBRATE THE LOCAL HERITAGE



RESPOND TO THE RIVERSIDE PARK AS A MAJOR CIVIC PLACE



PROVIDE OPPORTUNITY FOR A RANGE OF:

- Cultural
- Recreational
- Social & leisure
- Environmental events & activities to take place



MASTER PLAN,
LANDSCAPE
ARCHITECTURE &
PUBLIC DOMAIN
BIGGE PARK

2017-2018 / \$4M
LIVERPOOL CITY COUNCIL



2.4 DESIGN THEMES

GENERATE A MONUMENTAL SENSE OF 'PLACE'

CREATE A DESTINATION WHICH BEFITS THE ICONIC LOCATION & HISTORY WITH WAGGA WAGGA

BE OPTIMISTIC AND PLAYFUL WITH DISTINCT LANDSCAPE THEMES

FACILITATE OPPORTUNITIES FOR PASSIVE, ACTIVE, PROGRAMMED AND UN-PROGRAMMED ACTIVITIES

CONNECT THE PARK TO THE CITY AND BE ACCESSIBLE TO ALL.



LANDSCAPE
ARCHITECTURE &
PUBLIC DOMAIN
**MACQUARIE
MALL**
2014-2018 / \$12M
LIVERPOOL CITY COUNCIL

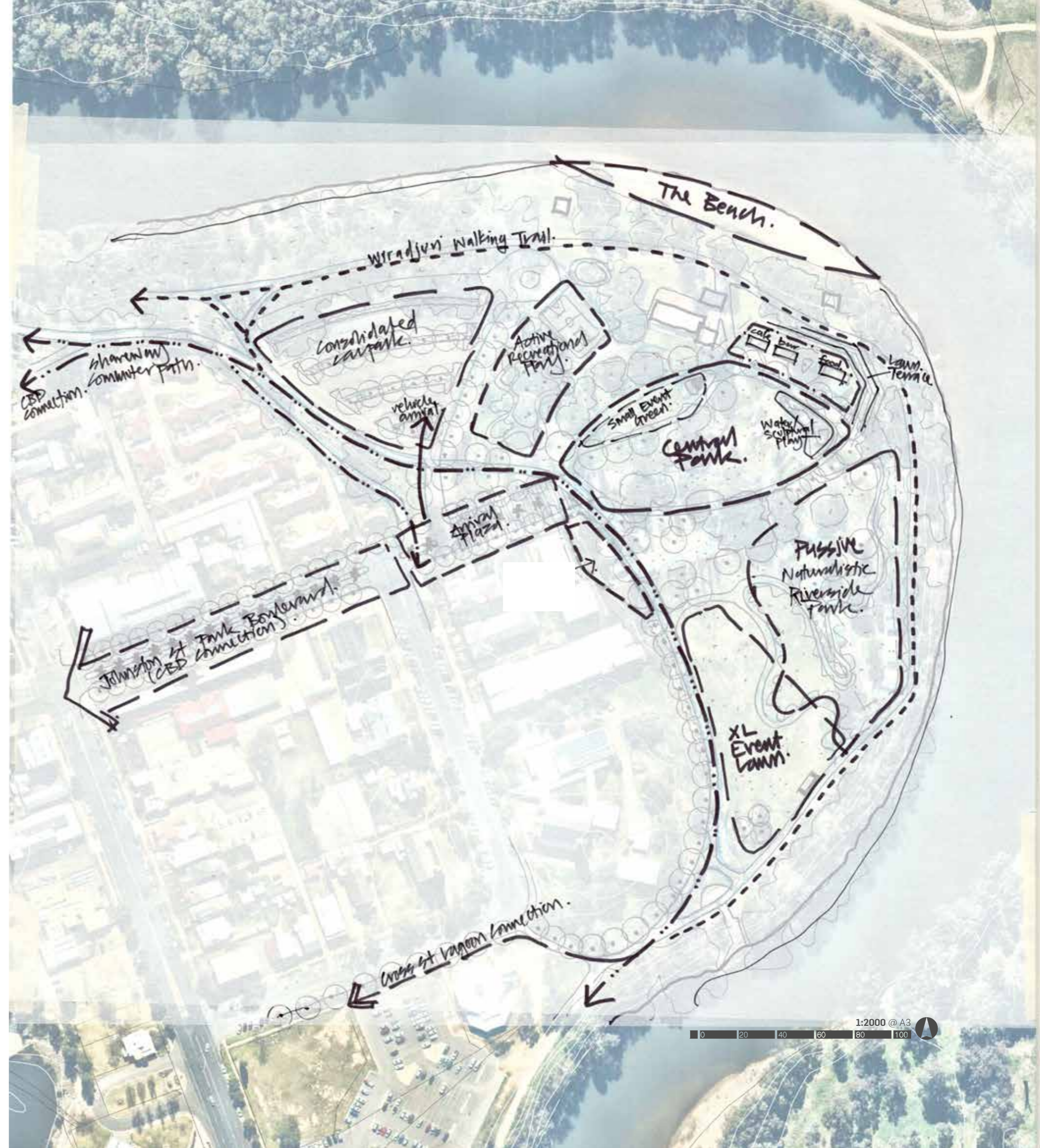


LANDSCAPE
ARCHITECTURE &
PUBLIC DOMAIN
**RHODES
COMMUNITY
PRECINCT**
2014-2018 / \$18.5M
CITY OF CANADA BAY
COUNCIL



LANDSCAPE
ARCHITECTURE &
PUBLIC DOMAIN
**RHODES
FORESHORE
PARK**
2016-2018 / \$865,000
CITY OF CANADA BAY

2.5 SKETCH CONCEPT PLAN



2.6

ILLUSTRATIVE CONCEPT PLAN



2.7 ACCESS & CIRCULATION

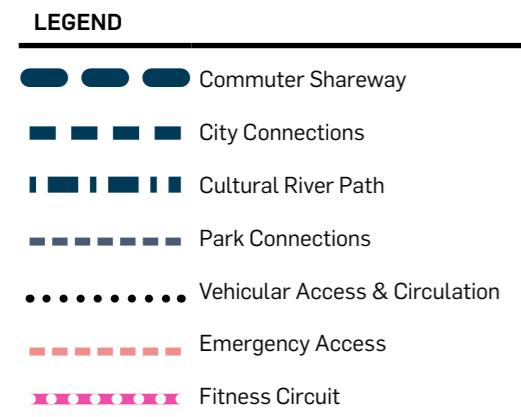
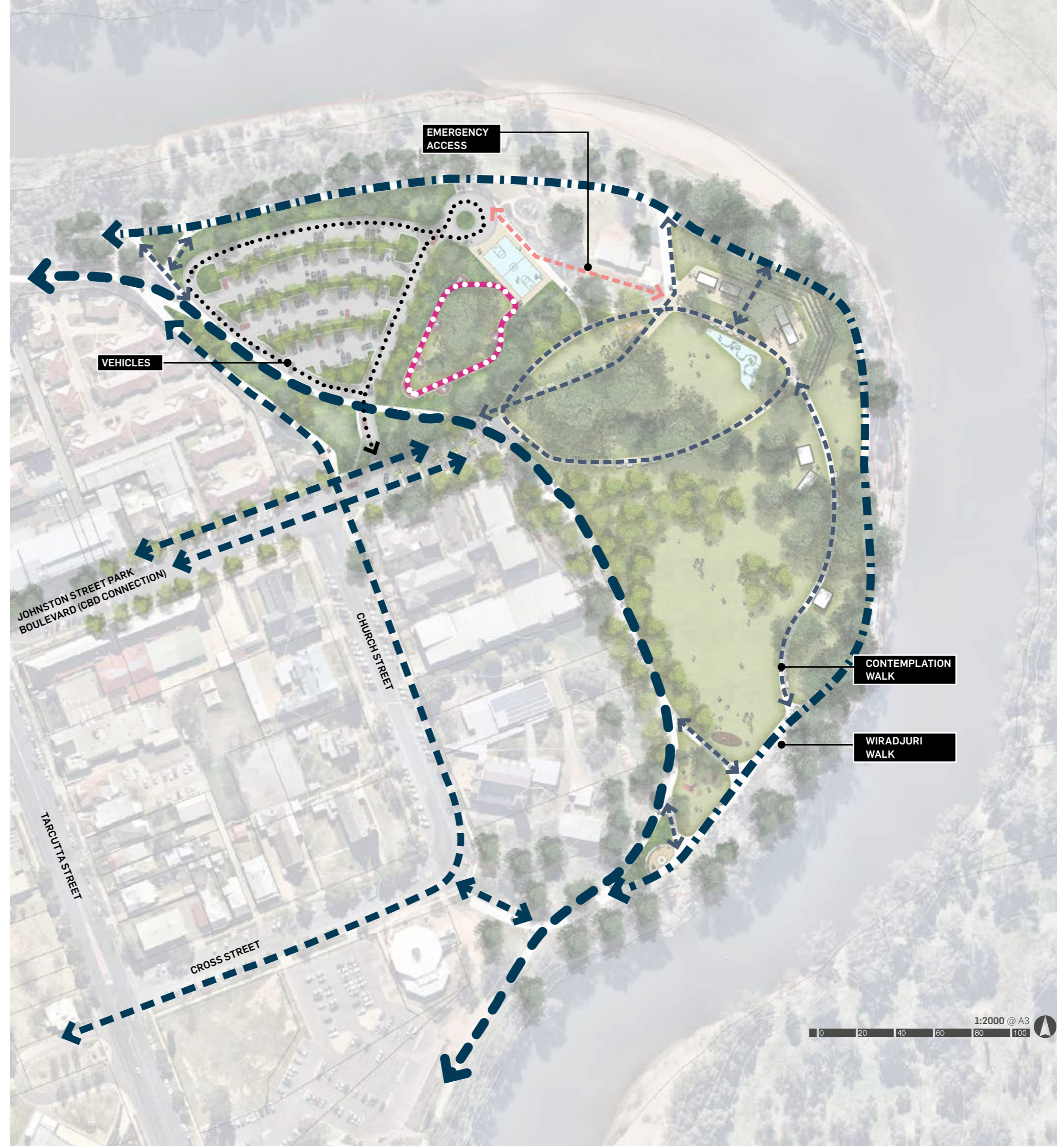


Figure 7 Access & Movement Principles



2.8 DESTINATIONS



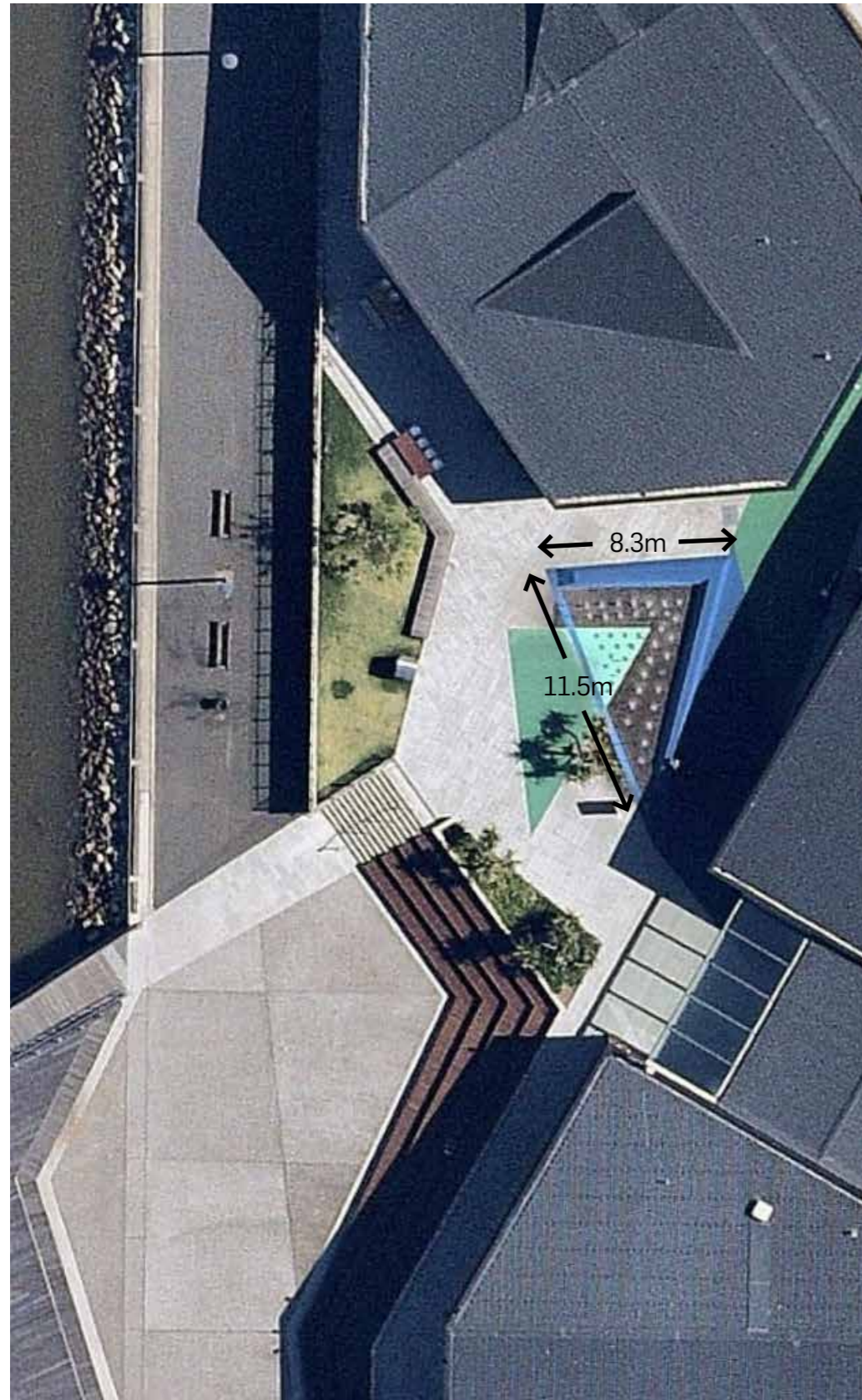
Figure 8 Destinations

2.9 PROGRAMS



Figure 9 Programs

2.10 PROJECT EXAMPLES RHODES COMMUNITY PRECINCT, RHODES, NSW



Interactive Water Play, activates Community Hub plaza on the edge of Homebush Bay. Combines public art overlay (softfall surface finish) with pop-up jets and mist.

Design: Urbis with Indigenous Artist Brook Andrews and Techno Water Designs

Cost: \$500,000 (pop-up jet slash pad from \$250,000)



Interactive Water Play, activates arrival plaza to the recently refurbished MACQUARIE Street Mall. Adjacent to play space including table tennis tables and chess tables.

MACQUARIE STREET MALL, LIVERPOOL, NSW

Design: Urbis with Techno Water Designs

Cost: \$500,000 (pop-up jet slash pad from \$250,000)



BIGGE PARK, LIVERPOOL, NSW

Proprietary Waterplay within the revitalised Bigge Park.

Design: Urbis with Parkequip

Cost: \$550,000



ROCKHAMPTON RIVERSIDE PRECINCT, ROCKHAMPTON, QLD

Interactive Water Play and Waterfall. Central feature along the recently revitalised Rockhampton waterfront

Design: Urbis

Cost: \$1.1million pop-up jets \$100,000 for digital waterfall

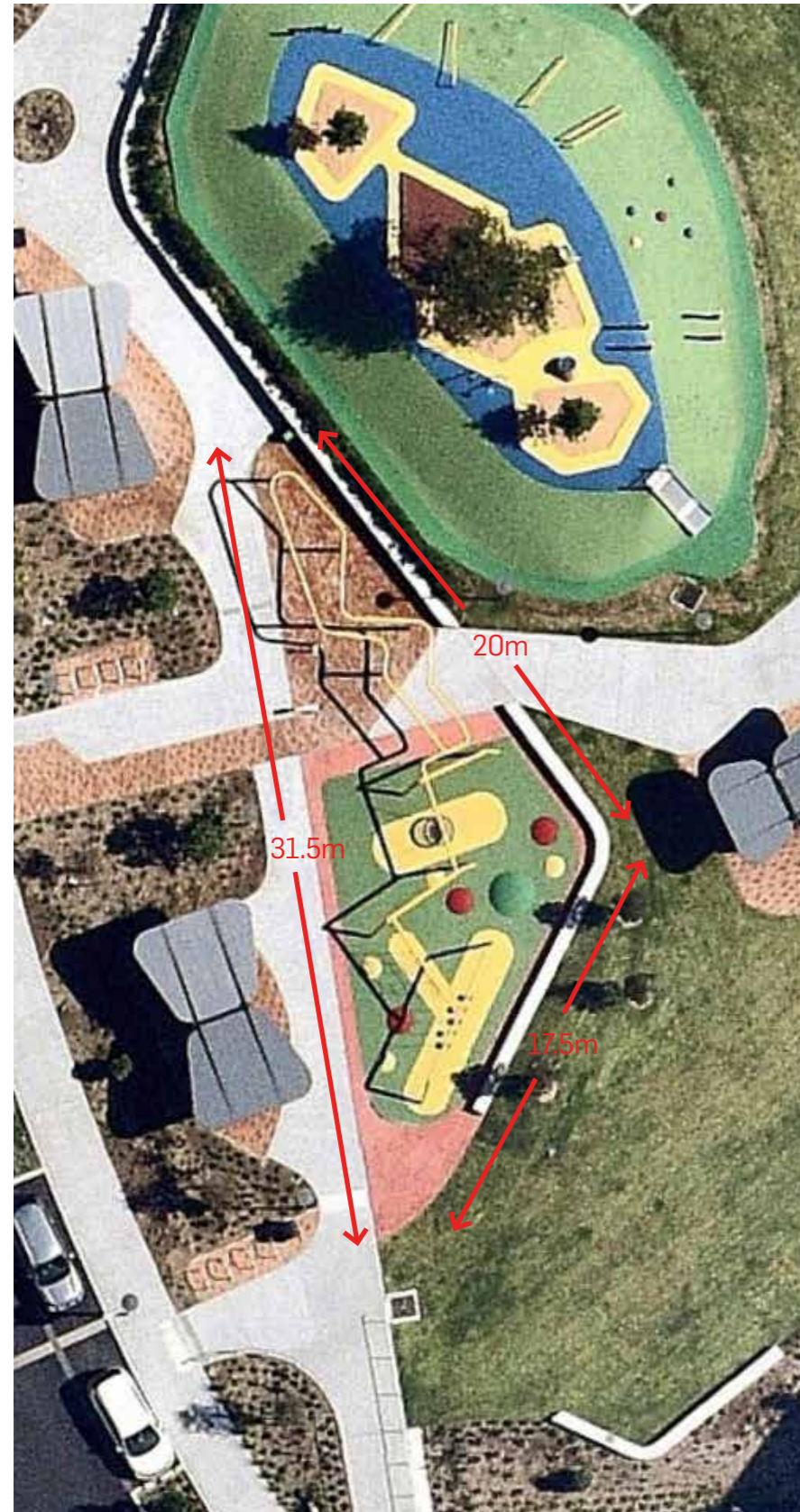


ONE THE WATERFRONT, WENTWORTH POINT, NSW

Integrated water play superstructure and play elements

Design: Urbis with Play By Design

Cost: Play \$145,000, Water jets/mist not installed. Between \$150,000 (connected to mains water) to \$500,000 (for fully reticulated system).



2.11 CAPACITY STUDY

SMALL EVENT GREEN: 997M²

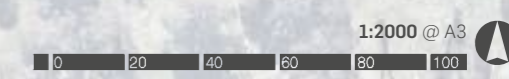
EVENT EXAMPLE	SPACE	CAPACITY
Outdoor Cinema / Cultural Events	1 person/m ²	997
Food & Wine Festival	2 people/m ²	1,994
Concert / ANZAC day	2-3 people/m ²	2,991
Outdoor Exercise / Picnic	1 person/2m ²	498

CENTRAL LAWN: 4,640M²

EVENT EXAMPLE	SPACE	CAPACITY
Outdoor Cinema / Cultural Events	1 person/m ²	4,640
Food & Wine Festival	2 people/m ²	9,280
Concert / ANZAC day	2-3 people/m ²	13,920
Outdoor Exercise / Picnic	1 person/2m ²	2,320

XL EVENT: 5,850M²

EVENT EXAMPLE	SPACE	CAPACITY
Outdoor Cinema / Cultural Events	1 person/m ²	5,850
Food & Wine Festival	2 people/m ²	11,700
Concert / ANZAC day	2-3 people/m ²	17,550
Outdoor Exercise / Picnic	1 person/2m ²	2,925



page left intentionally blank

