

**TARCUTTA, LADYSMITH AND URANQUINTY
FLOOD STUDIES**

DESIGN FLOOD MODELLING

VOLUME 2 – FIGURES AND APPENDICES

DRAFT REPORT FOR PUBLIC EXHIBITION

NOVEMBER 2014

LIST OF FIGURES

- 1.1 Catchment Plan
- 1.2 Tarcutta Drainage Plan
- 1.3 Ladysmith Drainage Plan
- 1.4 Uranquinty Drainage Plan

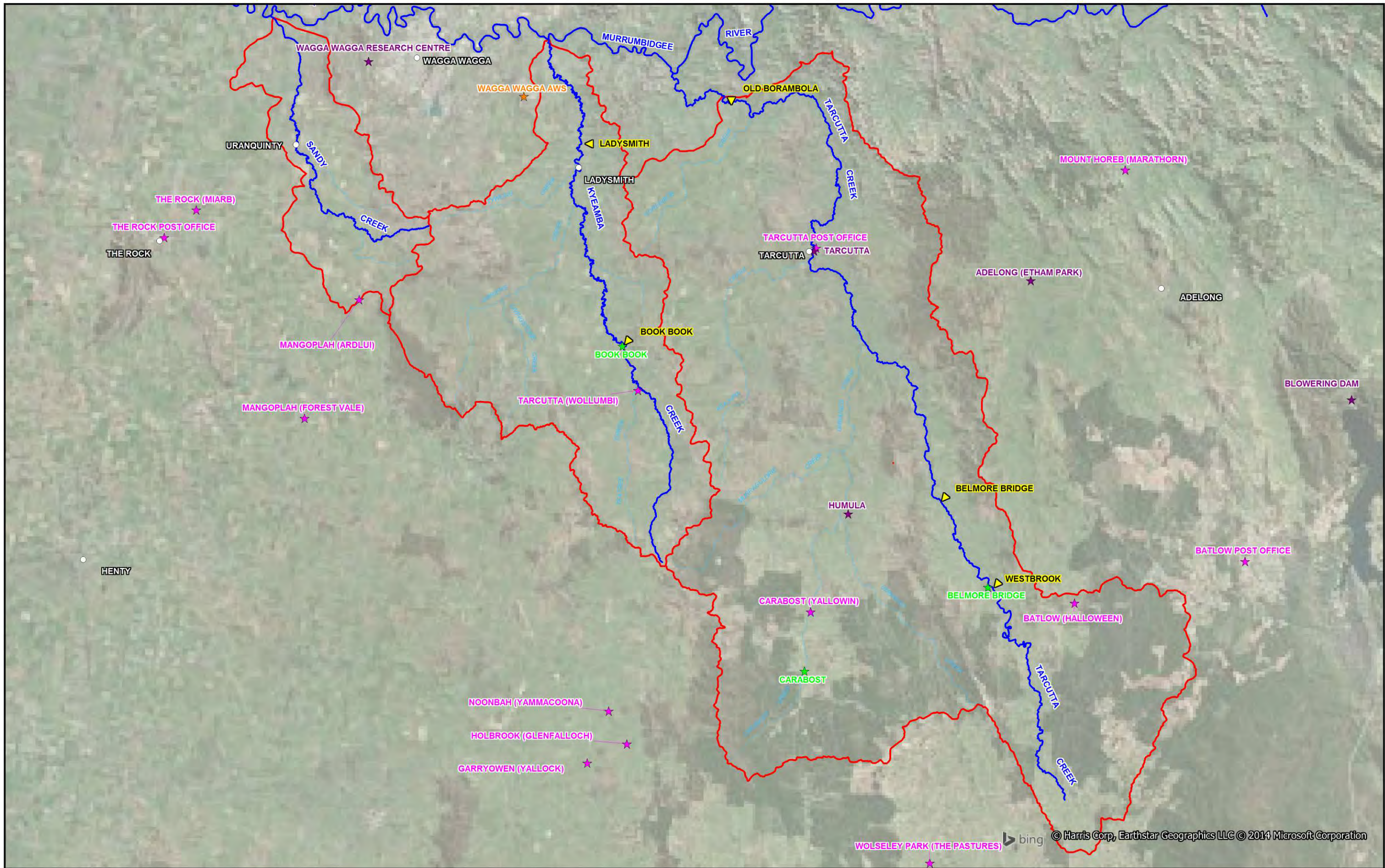
- 2.1 Extent of Catchment Specific PMP Ellipses

- 3.1 Design Water Surface Profiles – Tarcutta Creek (2 Sheets)
- 3.2 Stage and Discharge Hydrographs – Design Flood Events – Tarcutta Creek (2 Sheets)
- 3.3 Tarcutta TUFLOW Model Results – 5 year ARI
- 3.4 Tarcutta TUFLOW Model Results – 10 year ARI
- 3.5 Tarcutta TUFLOW Model Results – 20 year ARI
- 3.6 Tarcutta TUFLOW Model Results – 50 year ARI
- 3.7 Tarcutta TUFLOW Model Results – 100 year ARI
- 3.8 Tarcutta TUFLOW Model Results – 200 year ARI
- 3.9 Tarcutta TUFLOW Model Results – 500 year ARI
- 3.10 Tarcutta TUFLOW Model Results – PMF
- 3.11 Tarcutta Provisional Flood Hazard and Hydraulic Categorisation of Floodplain - 100 year ARI
- 3.12 Sensitivity of Flood Behaviour at Tarcutta to 20% Increase in Hydraulic Roughness Values – 100 year ARI 18 Hour Storm
- 3.13 Sensitivity of Flood Behaviour at Tarcutta to a Partial Blockage of Major Hydraulic Structures – 100 year ARI 18 Hour Storm
- 3.14 Sensitivity of Flood Behaviour at Tarcutta to Levee Failure – 100 year ARI
- 3.15 Sensitivity of Flood Behaviour at Tarcutta to 10% Increase in Rainfall Intensity - 100 year ARI
- 3.16 Sensitivity of Flood Behaviour at Tarcutta to 30% Increase in Rainfall Intensity - 100 year ARI
- 3.17 Impact of Increased Rainfall Intensities on Extent of Flooding at Tarcutta - 100 year ARI
- 3.18 Interim Flood Planning Area at Tarcutta – Main Stream Flooding Only

- 4.1 Design Water Surface Profiles – Kyeamba Creek
- 4.2 Stage and Discharge Hydrographs – Design Flood Events – Kyeamba Creek (2 Sheets)
- 4.3 Ladysmith TUFLOW Model Results – 5 year ARI
- 4.4 Ladysmith TUFLOW Model Results – 10 year ARI
- 4.5 Ladysmith TUFLOW Model Results – 20 year ARI
- 4.6 Ladysmith TUFLOW Model Results – 50 year ARI
- 4.7 Ladysmith TUFLOW Model Results – 100 year ARI
- 4.8 Ladysmith TUFLOW Model Results – 200 year ARI
- 4.9 Ladysmith TUFLOW Model Results – 500 year ARI
- 4.10 Ladysmith TUFLOW Model Results – PMF
- 4.11 Ladysmith Provisional Flood Hazard and Hydraulic Categorisation of Floodplain - 100 year ARI

- 4.12 Sensitivity of Flood Behaviour at Ladysmith to 20% Increase in Hydraulic Roughness Values – 100 year ARI 6 Hour Storm
- 4.13 Sensitivity of Flood Behaviour at Ladysmith to a Partial Blockage of Major Hydraulic Structures – 100 year ARI 6 Hour Storm
- 4.14 Sensitivity of Flood Behaviour at Ladysmith to 10% Increase in Rainfall Intensity - 100 year ARI
- 4.15 Sensitivity of Flood Behaviour at Ladysmith to 30% Increase in Rainfall Intensity - 100 year ARI
- 4.16 Impact of Increased Rainfall Intensities on Extent of Flooding at Ladysmith - 100 year ARI
- 4.17 Interim Flood Planning Area at Ladysmith – Main Stream Flooding Only

- 5.1 Design Water Surface Profiles – Sandy Creek
- 5.2 Stage and Discharge Hydrographs – Design Flood Events – Sandy Creek (2 Sheets)
- 5.3 Uranquinty TUFLOW Model Results – 5 year ARI
- 5.4 Uranquinty TUFLOW Model Results – 10 year ARI
- 5.5 Uranquinty TUFLOW Model Results – 20 year ARI
- 5.6 Uranquinty TUFLOW Model Results – 50 year ARI
- 5.7 Uranquinty TUFLOW Model Results – 100 year ARI
- 5.8 Uranquinty TUFLOW Model Results – 200 year ARI
- 5.9 Uranquinty TUFLOW Model Results – 500 year ARI
- 5.10 Uranquinty TUFLOW Model Results – PMF
- 5.11 Uranquinty Provisional Flood Hazard and Hydraulic Categorisation of Floodplain - 100 year ARI
- 5.12 Sensitivity of Flood Behaviour at Uranquinty to 20% Increase in Hydraulic Roughness Values – 100 year ARI 6 hour storm
- 5.13 Sensitivity of Flood Behaviour at Uranquinty to a Partial Blockage of Major Hydraulic Structures – 100 year ARI (2 Sheets)
- 5.14 Sensitivity of Flood Behaviour at Uranquinty to Levee Failure – 100 year ARI
- 5.15 Sensitivity of Flood Behaviour at Uranquinty to 10% Increase in Rainfall Intensity - 100 year ARI
- 5.16 Sensitivity of Flood Behaviour at Uranquinty to 30% Increase in Rainfall Intensity - 100 year ARI
- 5.17 Impact of Increased Rainfall Intensities on Extent of Flooding at Uranquinty - 100 year ARI
- 5.18 Interim Flood Planning Area at Uranquinty – Main Stream Flooding Only



TARCUTTA, LADYSMITH AND URANQUINTY FLOOD STUDIES DESIGN FLOOD MODELLING

CATCHMENT PLAN

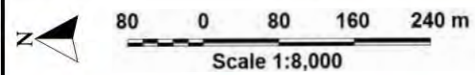
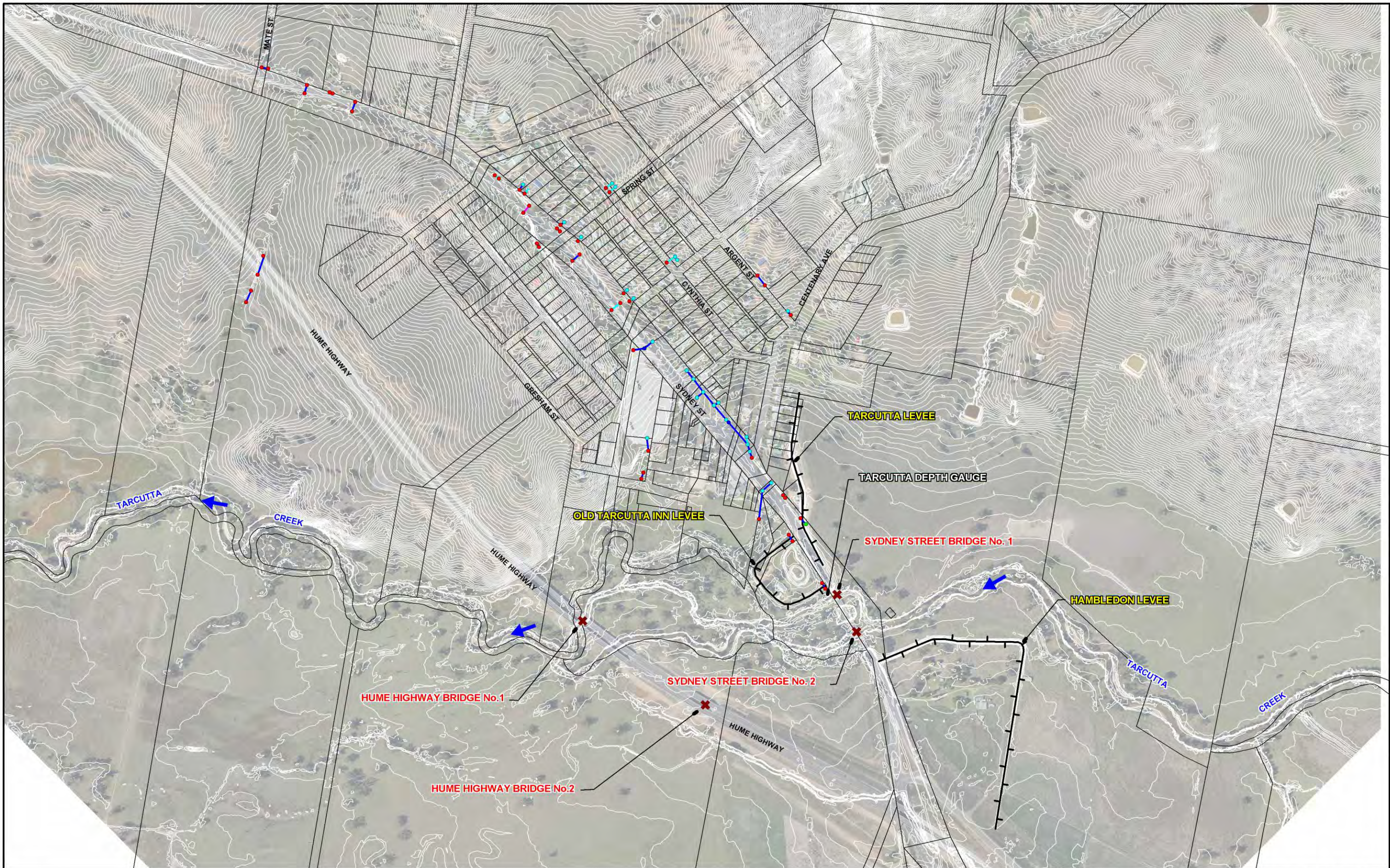
Figure 1.1

Lyall & Associates










LEGEND

▼ Stream Gauge	★ All Weather Station (AWS)
★ Daily Rain Gauge	★ BoM Flood Warning Network
★ Pluviograph Station	— Study Catchments

NOTE:
Note co-ordinates of Belmore Bridge rain gauge as per advice received from BoM.

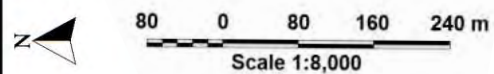
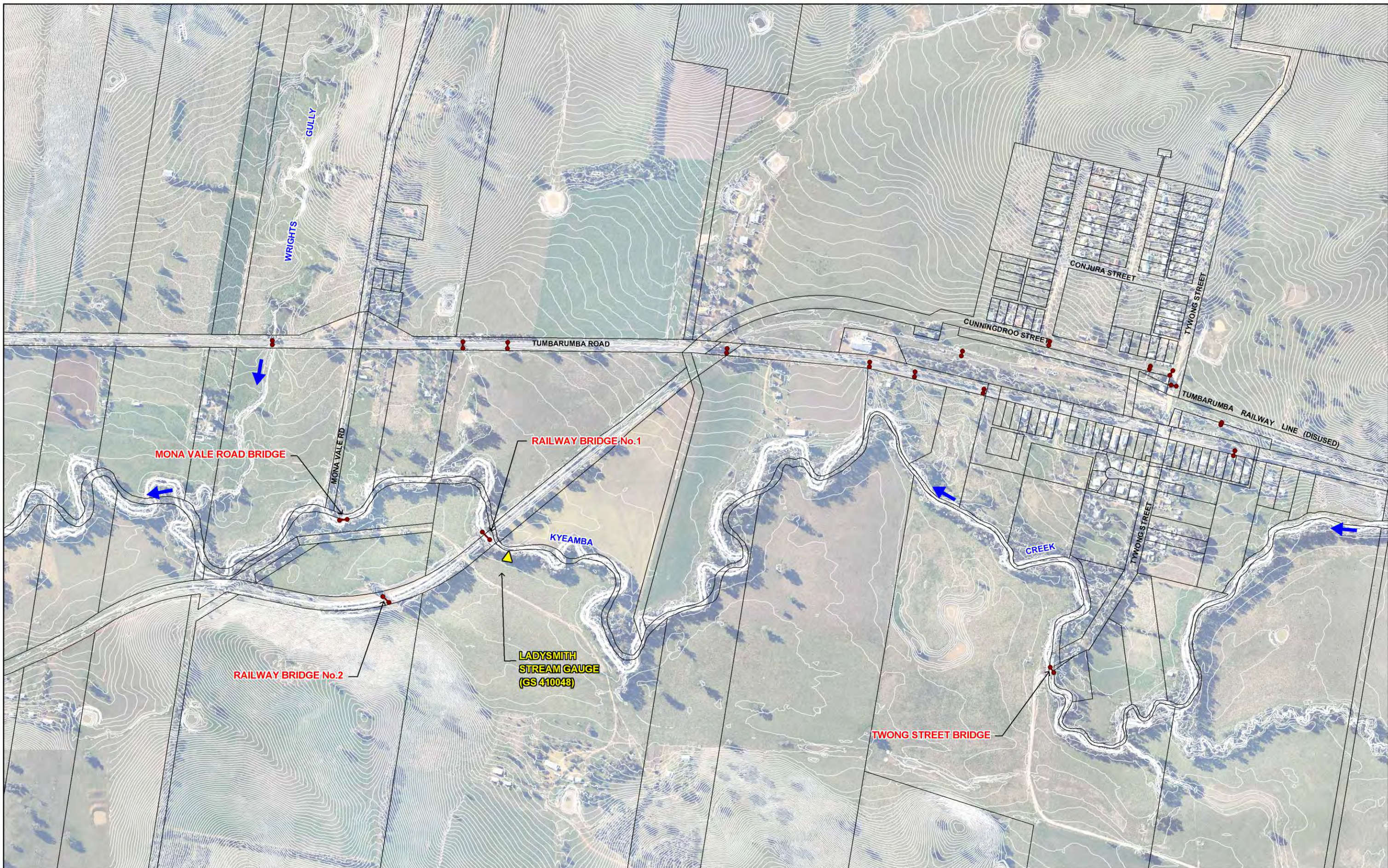


LEGEND

- | | | | |
|---|----------------------|---|--------------|
|  | Pipe 450 mm Diameter |  | Inlet Pit |
|  | Pipe 450 mm Diameter |  | Junction Pit |
|  | Box Culvert |  | Headwall |
|  | Bridge |  | Flood Gate |
| | |  | Levee |

**TARCUTTA, LADYSMITH AND URANQUINTY FLOOD STUDIES
DESIGN FLOOD MODELLING**

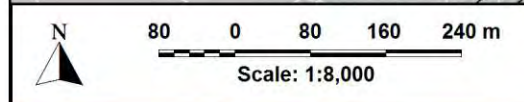
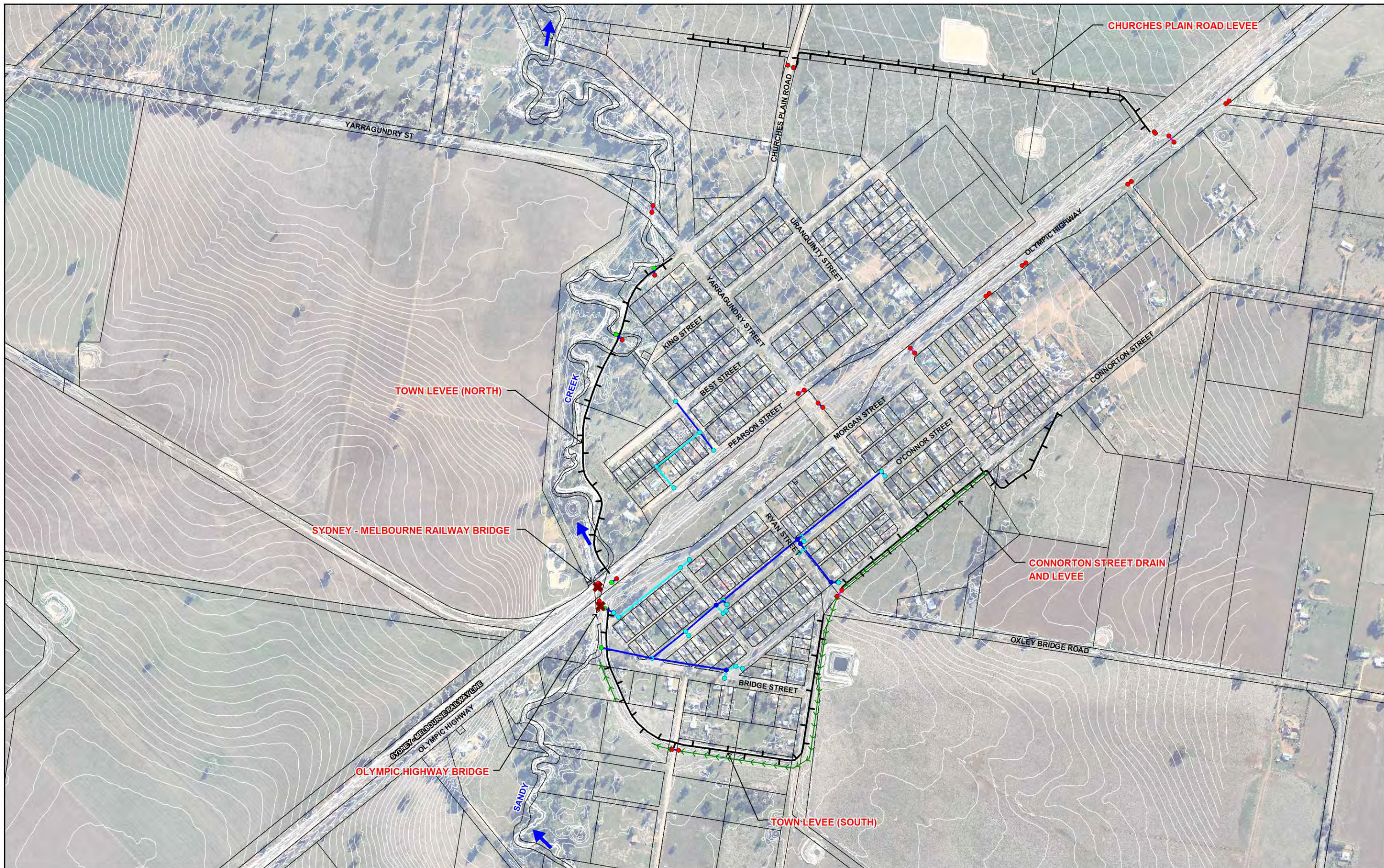
Figure 1.2













LEGEND

—●— Surveyed Stormwater Network

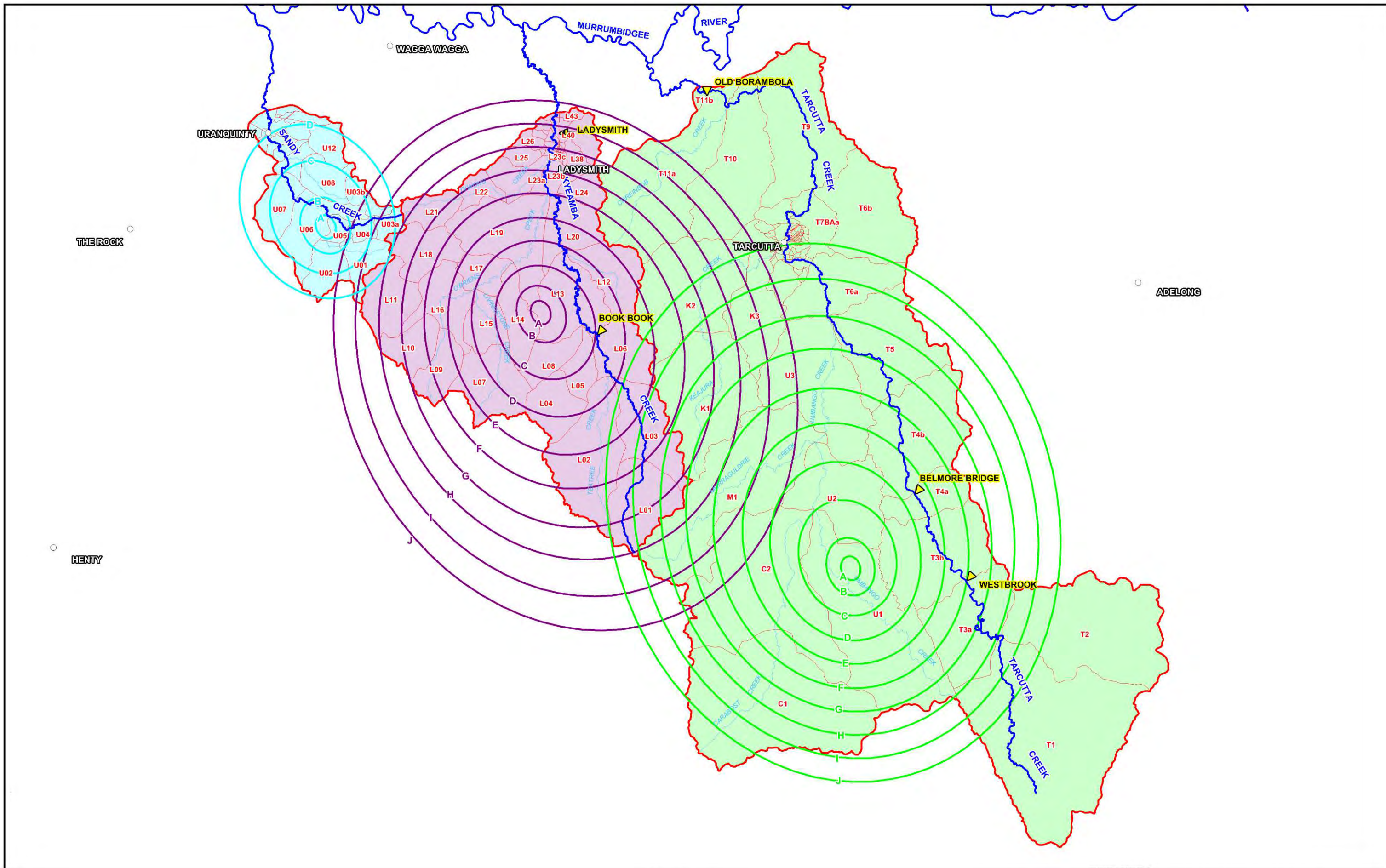
TARCUTTA, LADYSMITH AND URANQUINTY FLOOD STUDIES
DESIGN FLOOD MODELLING



LEGEND	
	Pipe < 450 mm Diameter
	Pipe ≥ 450 mm Diameter
	Box Culvert
	Levee
	Engineered Channel/ Drain
	Inlet Pit
	Junction Pit
	Headwall
	Flood Gate
	Bridge

**TARCUTTA, LADYSMITH AND URANQUINTY FLOOD STUDIES
DESIGN FLOOD MODELLING**

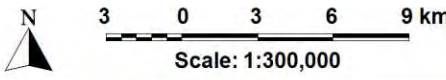
Figure 1.4



THE ROCK

HENTY

ADELONG



LEGEND

- A — Uranquinty PMP Ellipse Extents
- A — Ladysmith PMP Ellipse Extents
- A — Tarcutta PMP Ellipse Extents
- Catchment Boundary
- T1 Sub-Catchment and Identifier
- ▼ Stream Gauge

TARCUTTA, LADYSMITH AND URANQUINTY FLOOD STUDIES
DESIGN FLOOD MODELLING

Figure 2.1

EXTENT OF CATCHMENT SPECIFIC PMP ELLIPSES