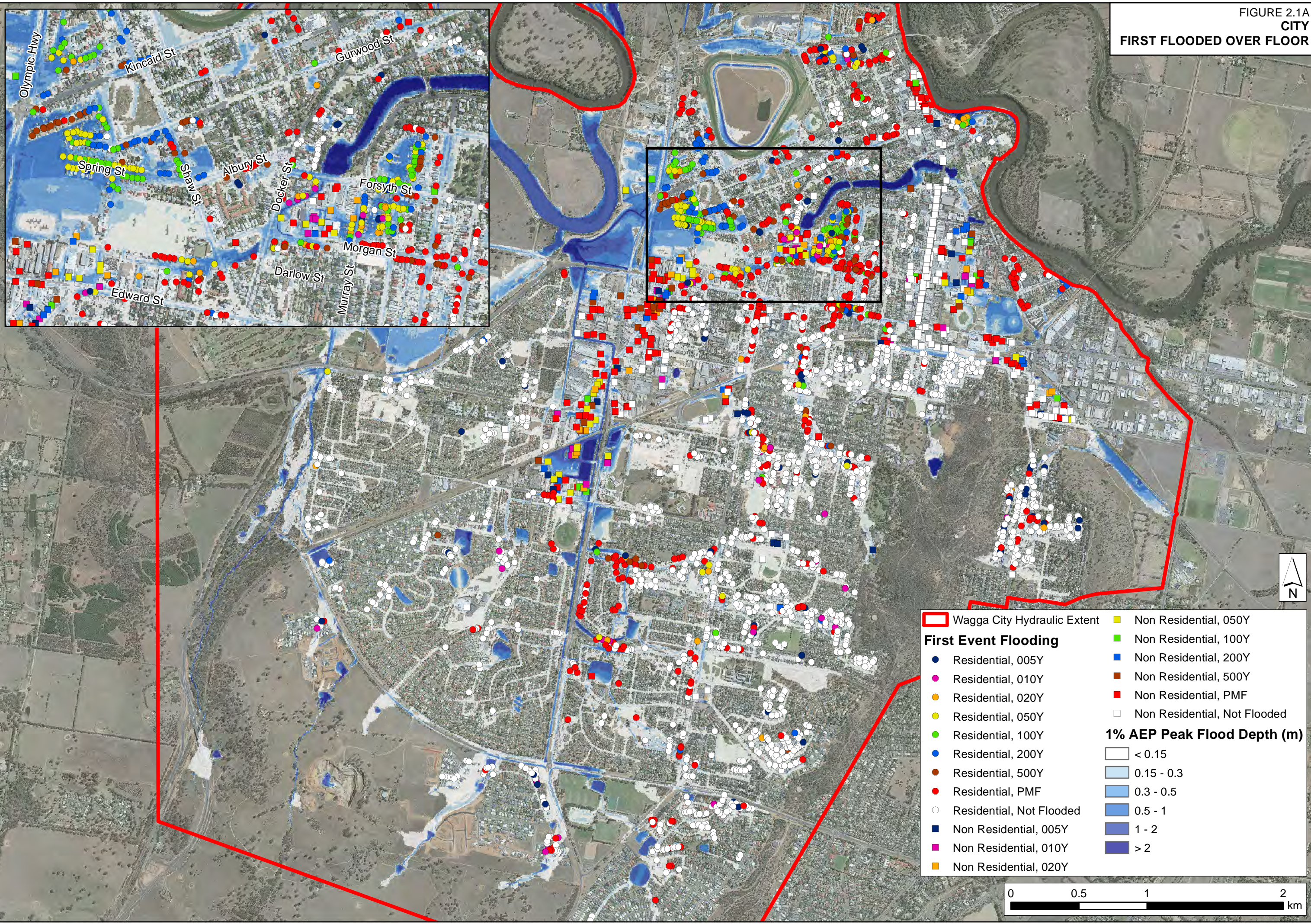


J:\Jobs\117047\ARC\Maps\ARR2016\_Report\Figures\Report\_02\_Flood\_Damages\_Assessment\Figure2\_01A\_MOF\_First\_Flooded\_Over\_Floor\_City.mxd



Wagga City Hydraulic Extent	Non Residential, 050Y
<b>First Event Flooding</b>	Non Residential, 100Y
Residential, 005Y	Non Residential, 200Y
Residential, 010Y	Non Residential, 500Y
Residential, 020Y	Non Residential, PMF
Residential, 050Y	Non Residential, Not Flooded
Residential, 100Y	
Residential, 200Y	<b>1% AEP Peak Flood Depth (m)</b>
Residential, 500Y	< 0.15
Residential, PMF	0.15 - 0.3
Residential, Not Flooded	0.3 - 0.5
Non Residential, 005Y	0.5 - 1
Non Residential, 010Y	1 - 2
Non Residential, 020Y	> 2

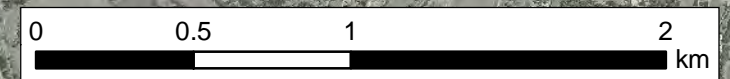
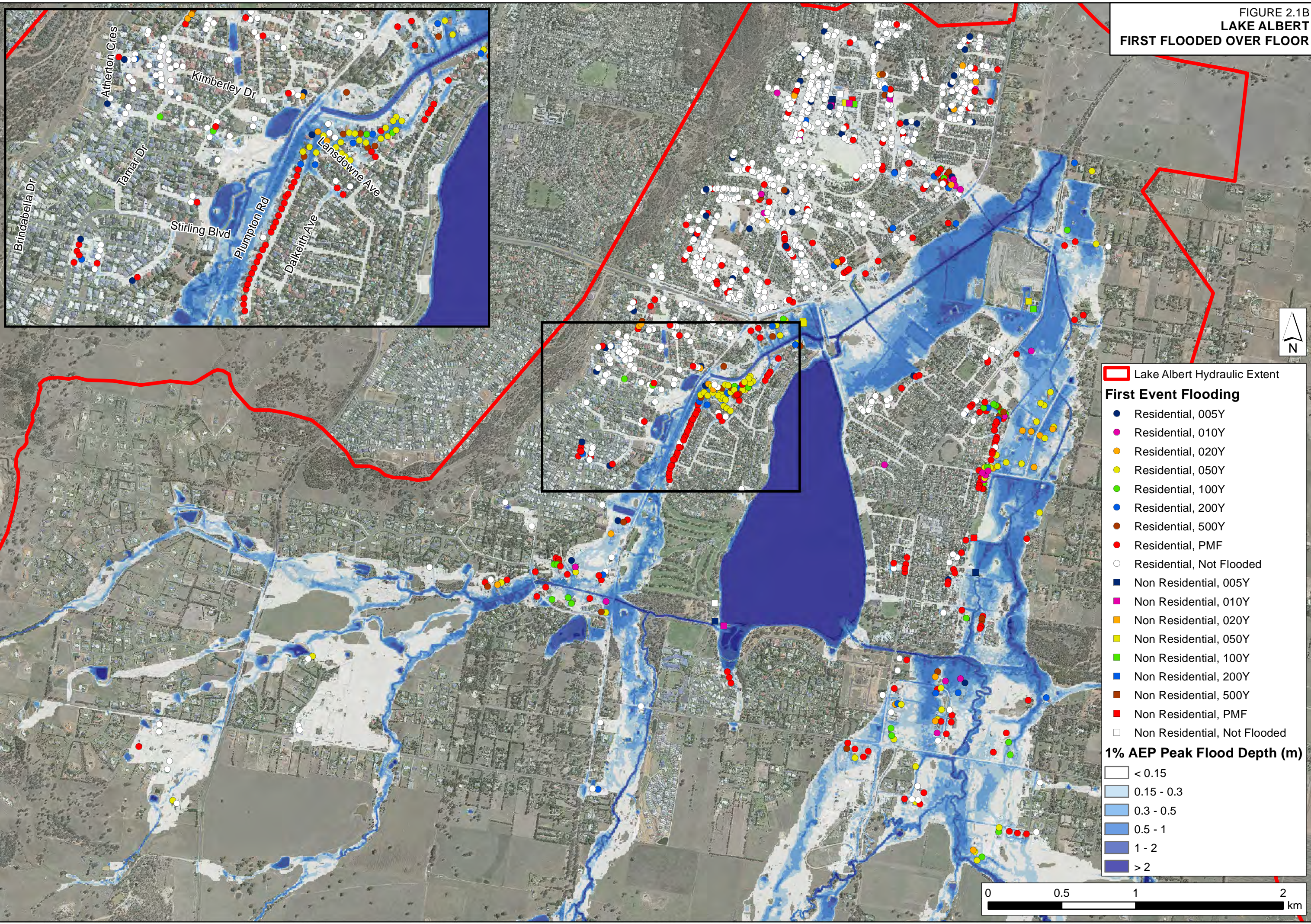




FIGURE 2.1B  
LAKE ALBERT  
FIRST FLOODED OVER FLOOR



**Legend**

- Lake Albert Hydraulic Extent

**First Event Flooding**

- Residential, 005Y
- Residential, 010Y
- Residential, 020Y
- Residential, 050Y
- Residential, 100Y
- Residential, 200Y
- Residential, 500Y
- Residential, PMF
- Residential, Not Flooded
- Non Residential, 005Y
- Non Residential, 010Y
- Non Residential, 020Y
- Non Residential, 050Y
- Non Residential, 100Y
- Non Residential, 200Y
- Non Residential, 500Y
- Non Residential, PMF
- Non Residential, Not Flooded

**1% AEP Peak Flood Depth (m)**

- < 0.15
- 0.15 - 0.3
- 0.3 - 0.5
- 0.5 - 1
- 1 - 2
- > 2

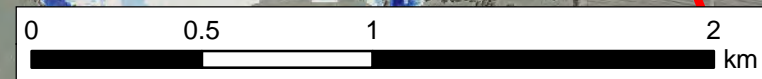
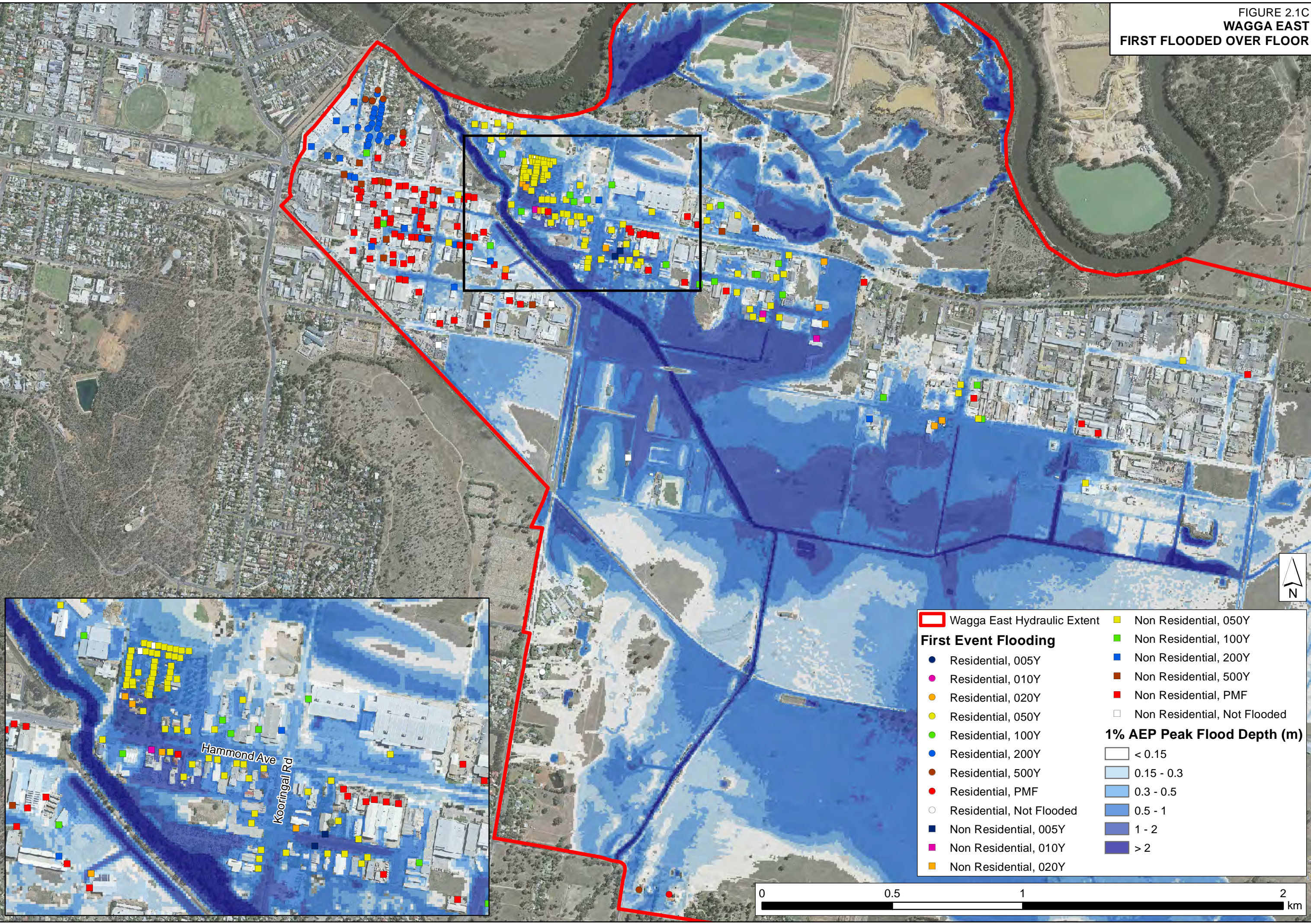




FIGURE 2.1C  
WAGGA EAST  
FIRST FLOODED OVER FLOOR

J:\Jobs\117047\ARC\Maps\ARR2016\_ReportFigures\Report\_02\_Flood\_Damages\_Assessment\Figure2\_01C\_MOF\_First\_Flooded\_Over\_Floor\_EastWagga.mxd



Wagga East Hydraulic Extent	Non Residential, 050Y
<b>First Event Flooding</b>	Non Residential, 100Y
Residential, 005Y	Non Residential, 200Y
Residential, 010Y	Non Residential, 500Y
Residential, 020Y	Non Residential, PMF
Residential, 050Y	Non Residential, Not Flooded
Residential, 100Y	
Residential, 200Y	<b>1% AEP Peak Flood Depth (m)</b>
Residential, 500Y	< 0.15
Residential, PMF	0.15 - 0.3
Residential, Not Flooded	0.3 - 0.5
Non Residential, 005Y	0.5 - 1
Non Residential, 010Y	1 - 2
Non Residential, 020Y	> 2

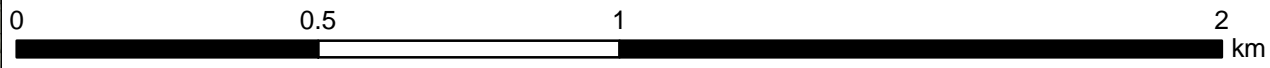
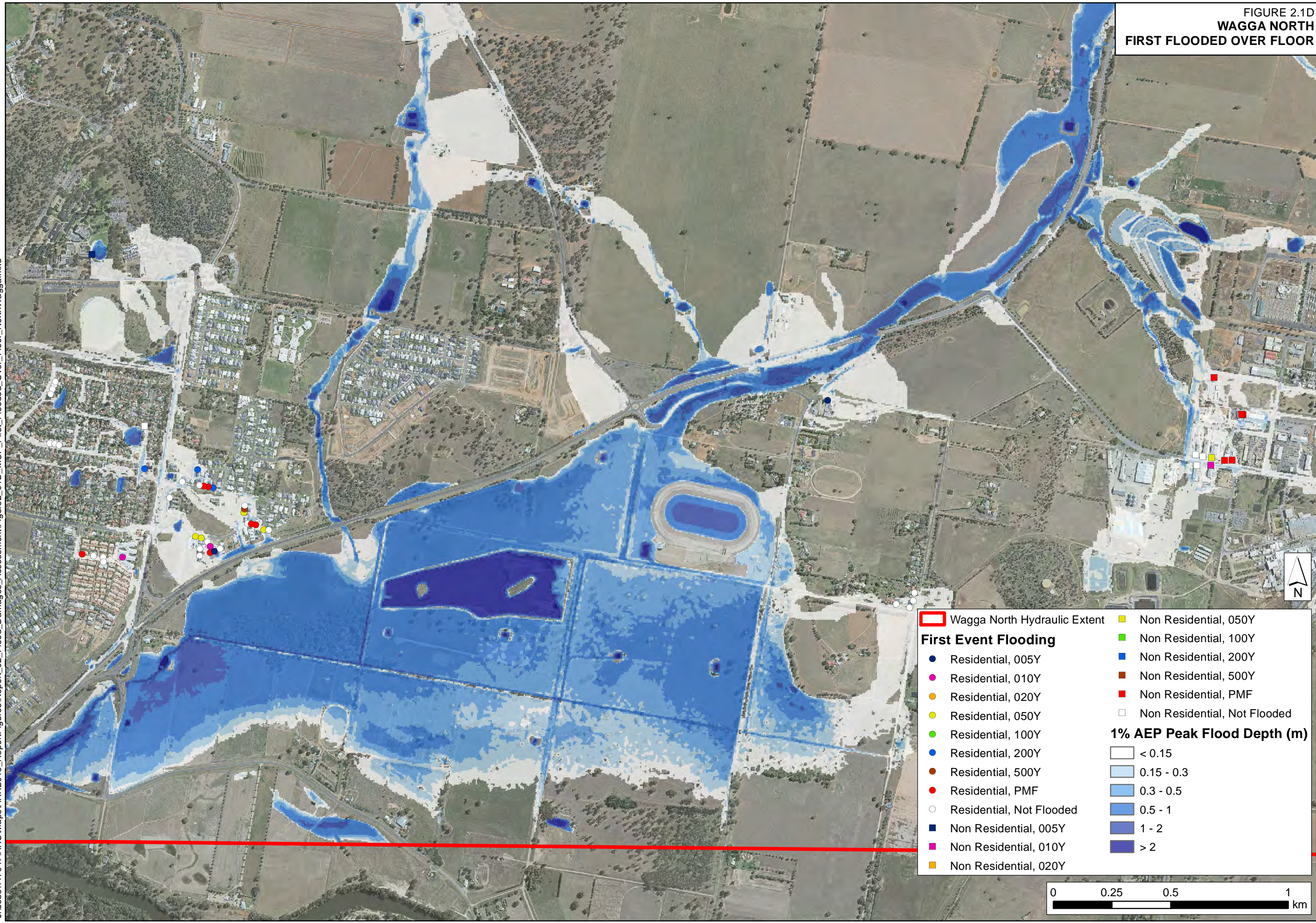




FIGURE 2.1D  
**WAGGA NORTH**  
**FIRST FLOODED OVER FLOOR**

J:\Jobs\117047\ARCM\Maps\ARR2016\_Report\Figures\Report\_02\_Flood\_Damages\_Assessment\Figure2\_01D\_MOF\_First\_Flooded\_Over\_Floor\_NorthWagga.mxd



	Wagga North Hydraulic Extent		Non Residential, 050Y
<b>First Event Flooding</b>			Non Residential, 100Y
	Residential, 005Y		Non Residential, 200Y
	Residential, 010Y		Non Residential, 500Y
	Residential, 020Y		Non Residential, PMF
	Residential, 050Y		Non Residential, Not Flooded
	Residential, 100Y		
	Residential, 200Y		
	Residential, 500Y		
	Residential, PMF		
	Residential, Not Flooded		
	Non Residential, 005Y		
	Non Residential, 010Y		
	Non Residential, 020Y		

	<b>1% AEP Peak Flood Depth (m)</b>
	< 0.15
	0.15 - 0.3
	0.3 - 0.5
	0.5 - 1
	1 - 2
	> 2

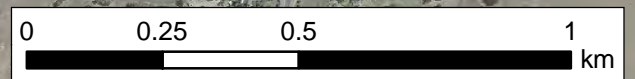
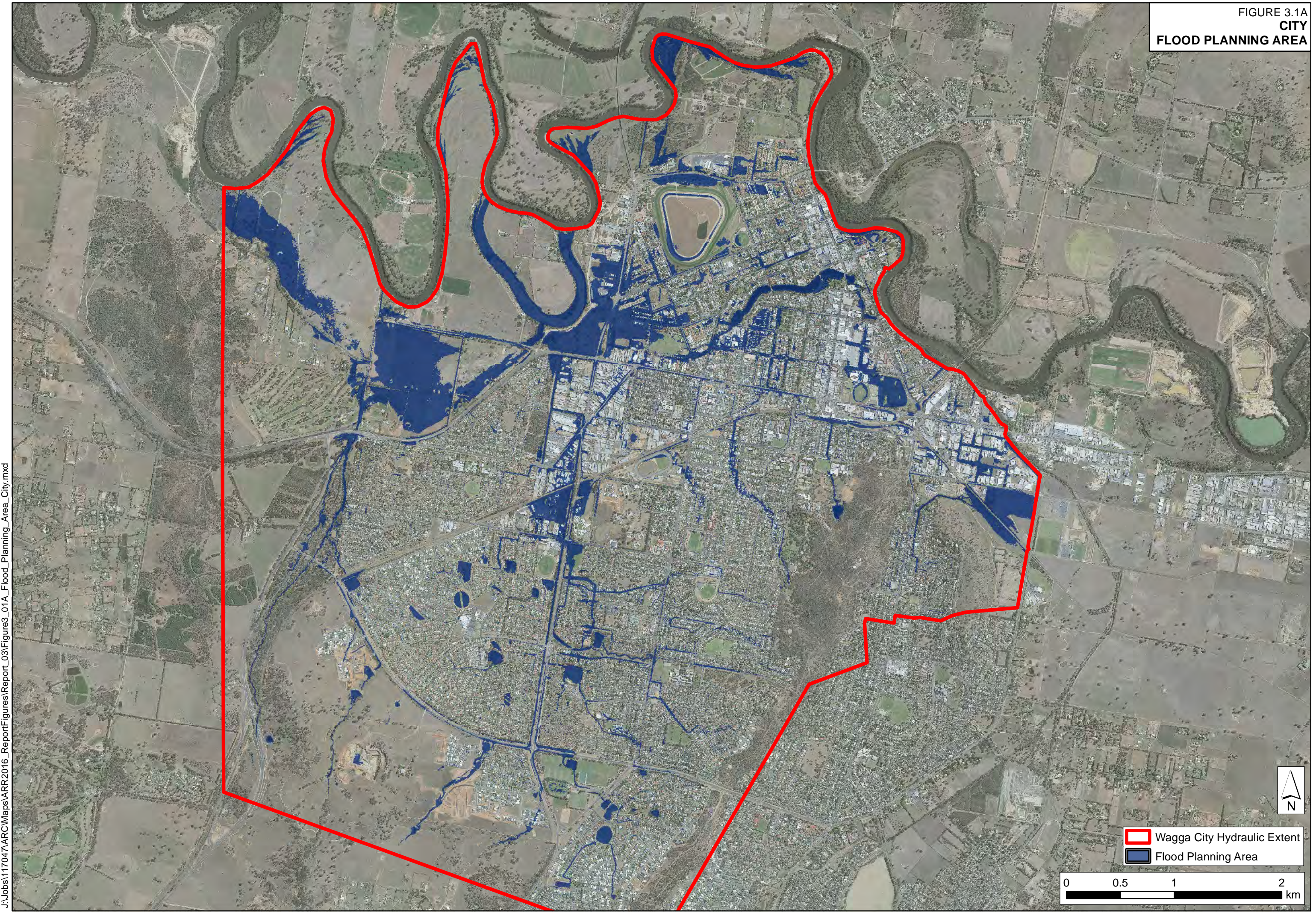




FIGURE 3.1A  
CITY  
FLOOD PLANNING AREA



Wagga City Hydraulic Extent  
Flood Planning Area

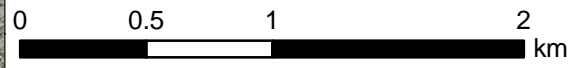




FIGURE 3.1B  
LAKE ALBERT  
FLOOD PLANNING AREA

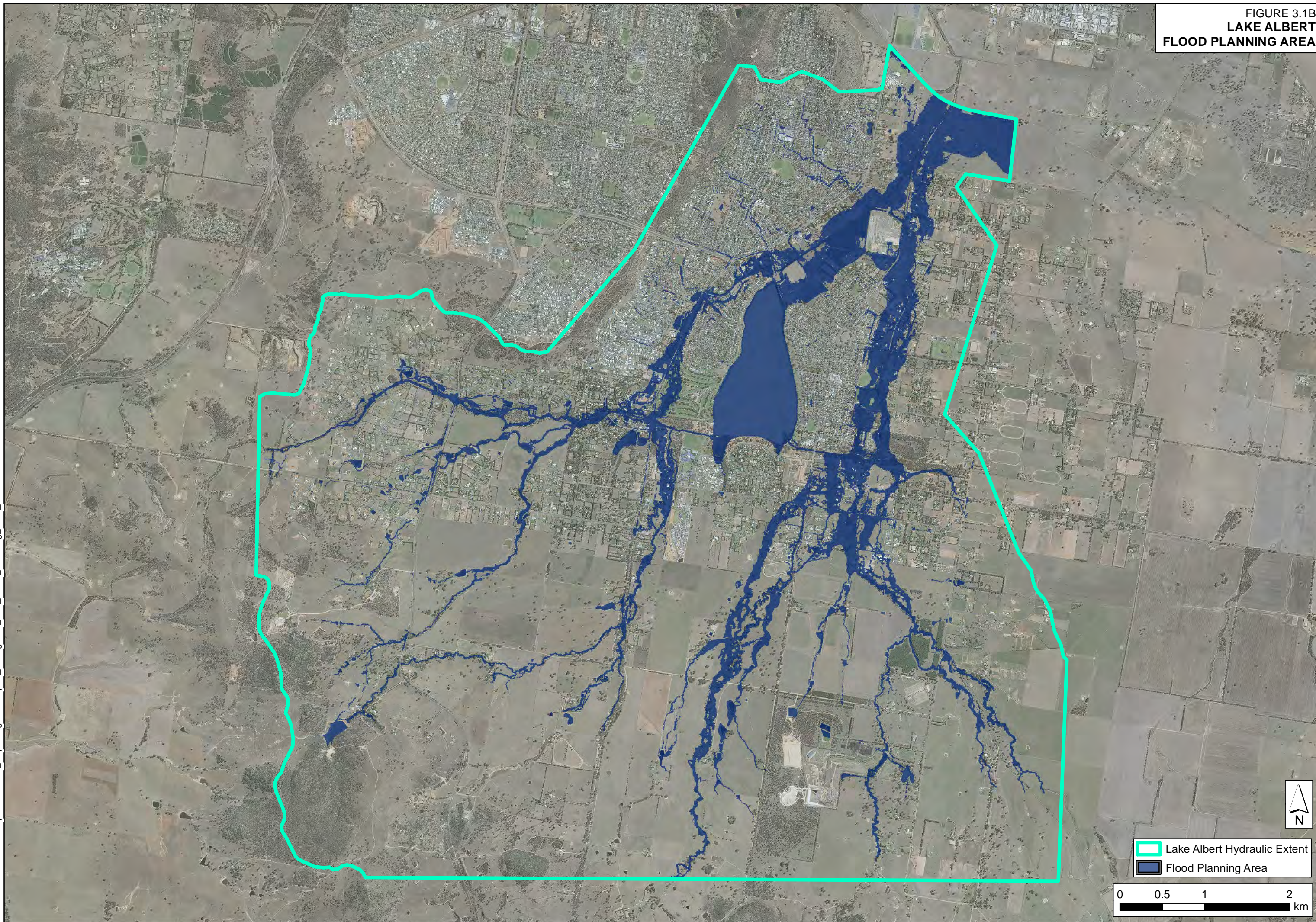




FIGURE 3.1C  
WAGGA EAST  
FLOOD PLANNING AREA

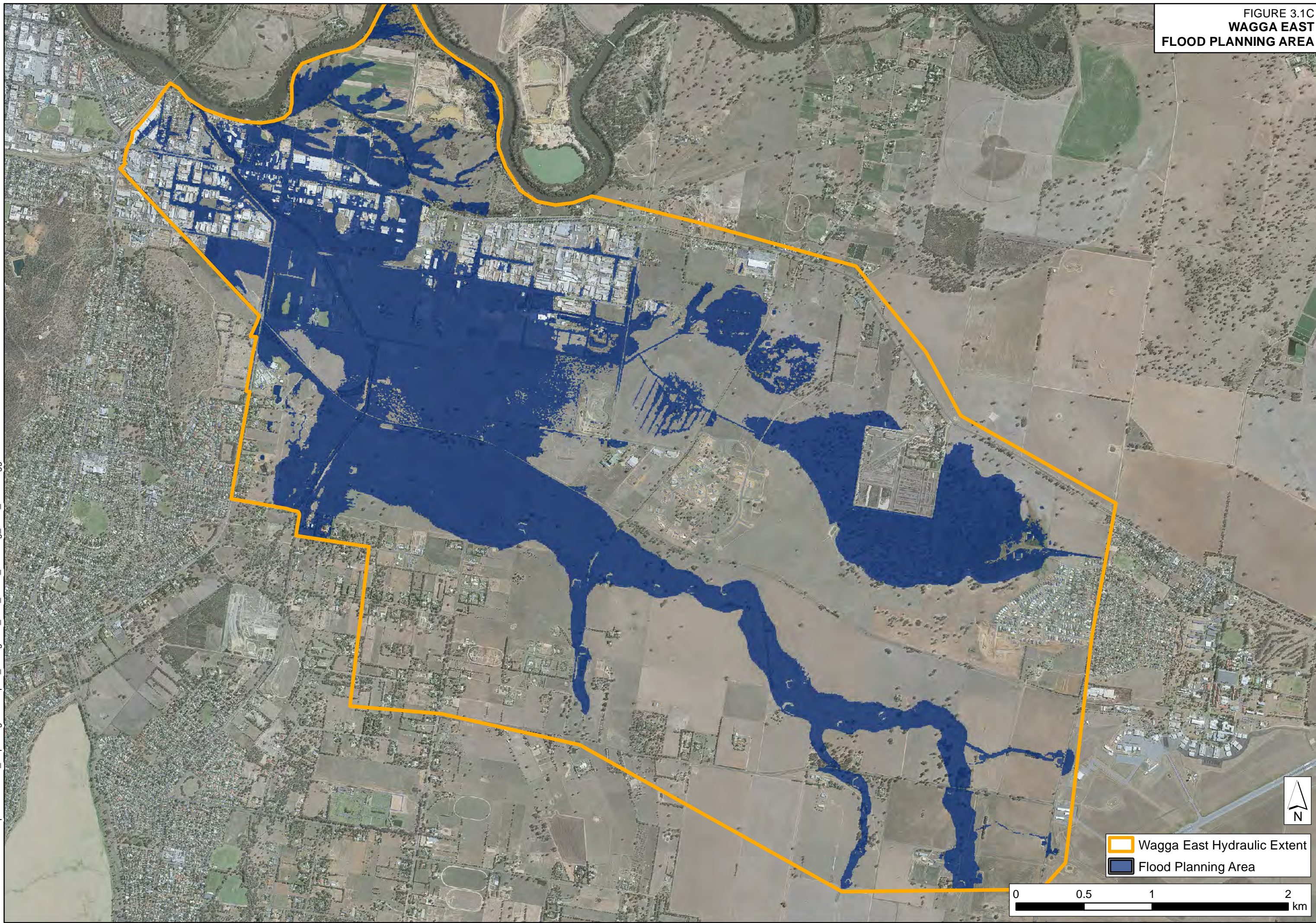




FIGURE 3.1D  
WAGGA NORTH  
FLOOD PLANNING AREA

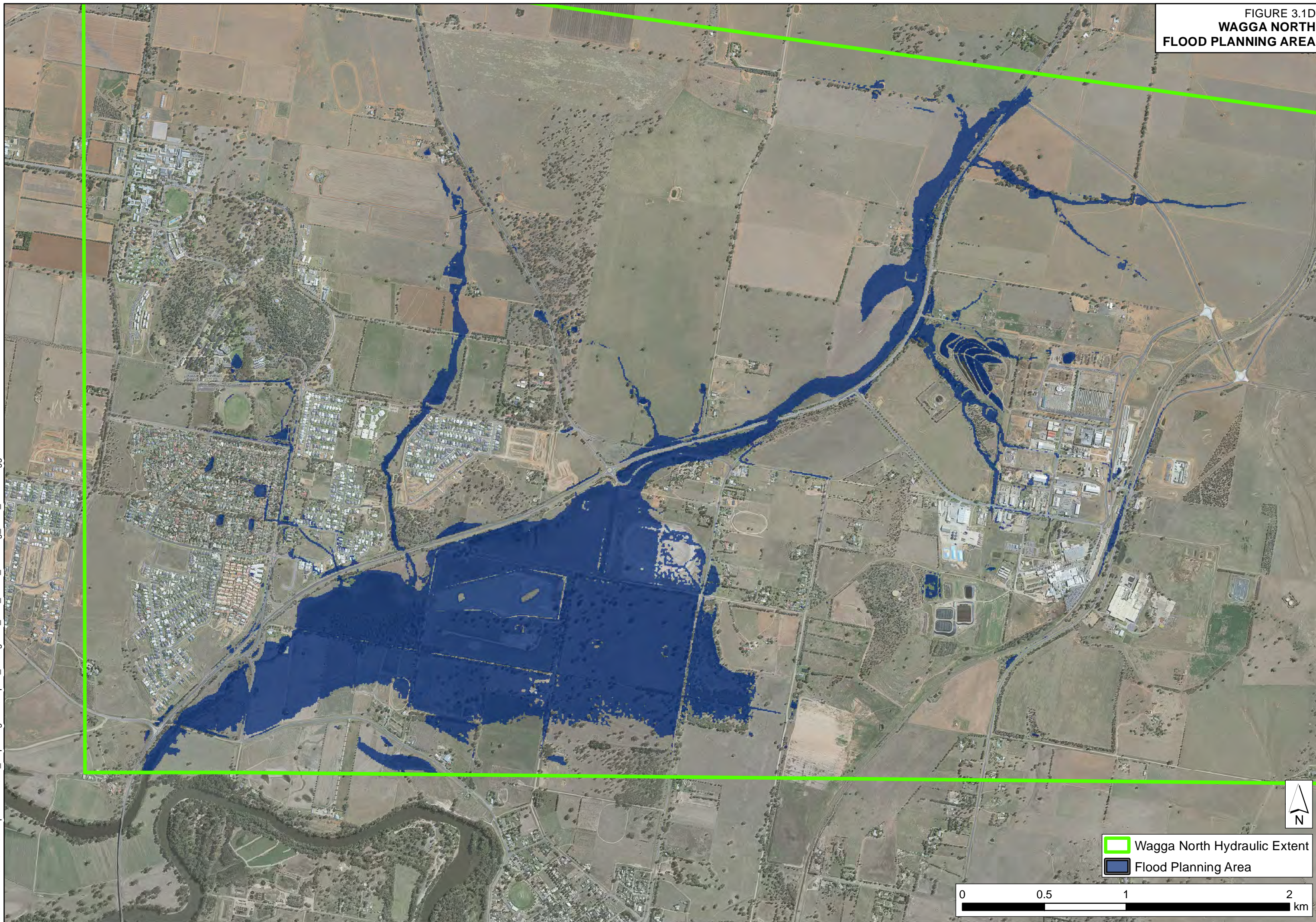
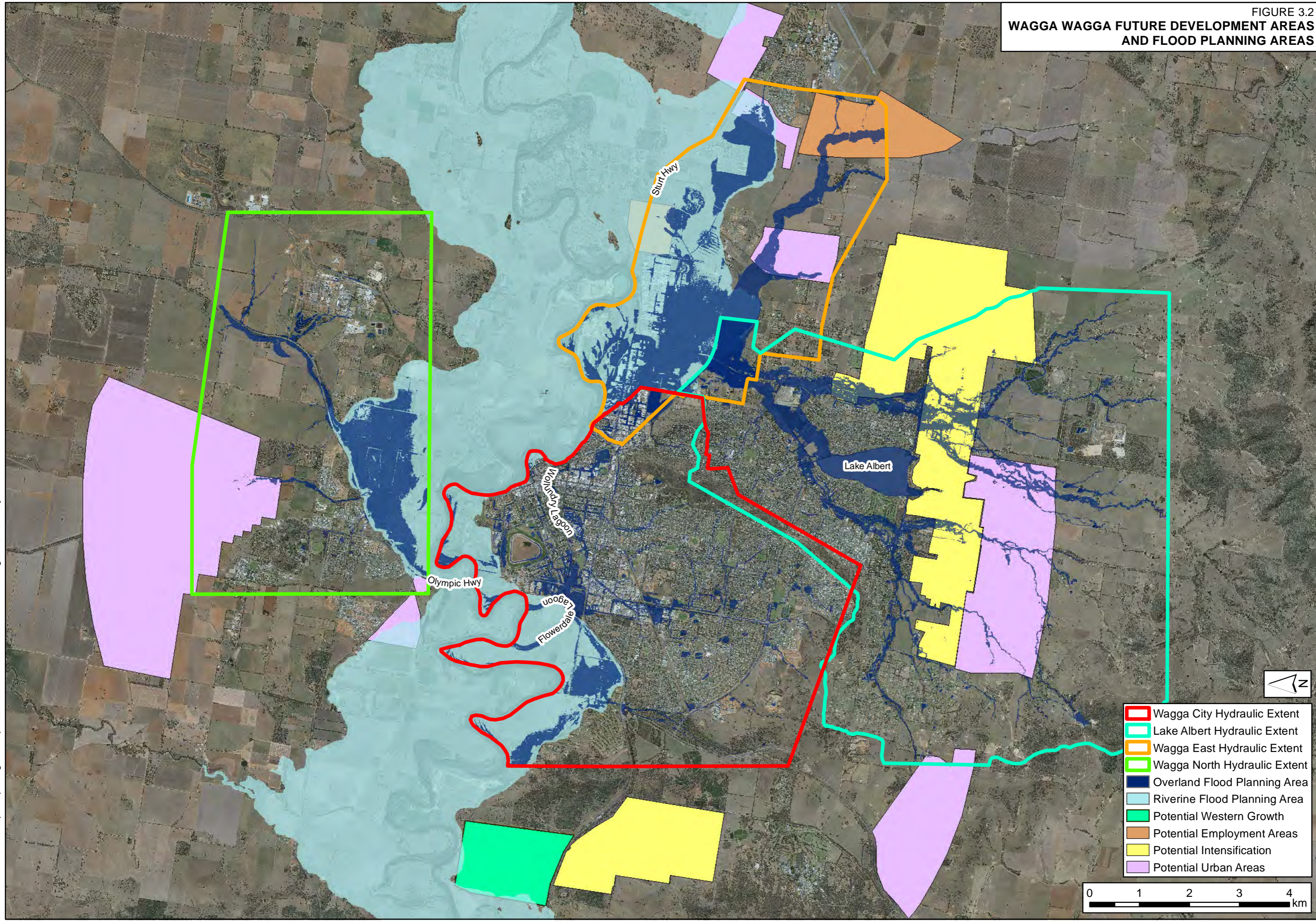




FIGURE 3.2  
**WAGGA WAGGA FUTURE DEVELOPMENT AREAS  
 AND FLOOD PLANNING AREAS**



- Wagga City Hydraulic Extent
- Lake Albert Hydraulic Extent
- Wagga East Hydraulic Extent
- Wagga North Hydraulic Extent
- Overland Flood Planning Area
- Riverine Flood Planning Area
- Potential Western Growth
- Potential Employment Areas
- Potential Intensification
- Potential Urban Areas



