

FEBRUARY 5th 2010 FLOODING PHOTO'S AND MISCELLANEOUS OTHERS



5th February 2010



Figure 1 - Ashmont Drain U/S of junction with Glenfield Drain (West of Bunnings)



Figure 2 - Bridge at McDonalds



Figure 3 - Bunnings Bridge on Northern side (U/S)



Figure 4 - Bunnings Bridge on Northern side (D/S)



Figure 5 - Bunnings Bridge on Northern side looking D/S and West



Figure 6 - Bunnings Bridge on Eastern side looking D/S and North



Figure 7 - Bunnings Bridge (Eastern) looking U/S



Figure 8 - Chaston St access to Mortimer Pl



Figure 9 - Dobney Avenue North of Holden Dealership



Figure 10 - Dobney Ave at Holden Dealership



Figure 10A - Dobney Avenue



Figure 11 - Looking North-East with Bunnings behind observer at drain bend



Figure 12 - McDonalds Bridge post-inundation (looking West)



Figure 13 - Edward-Dobney-Cullen Intersection



Figure 14 - Looking East from McDonalds Bridge (Remand Centre in background)



Figure 15 - Bunnings Bridge (Eastern) looking east



Figure 16 - Bunnings Bridge (Eastern) looking South-East

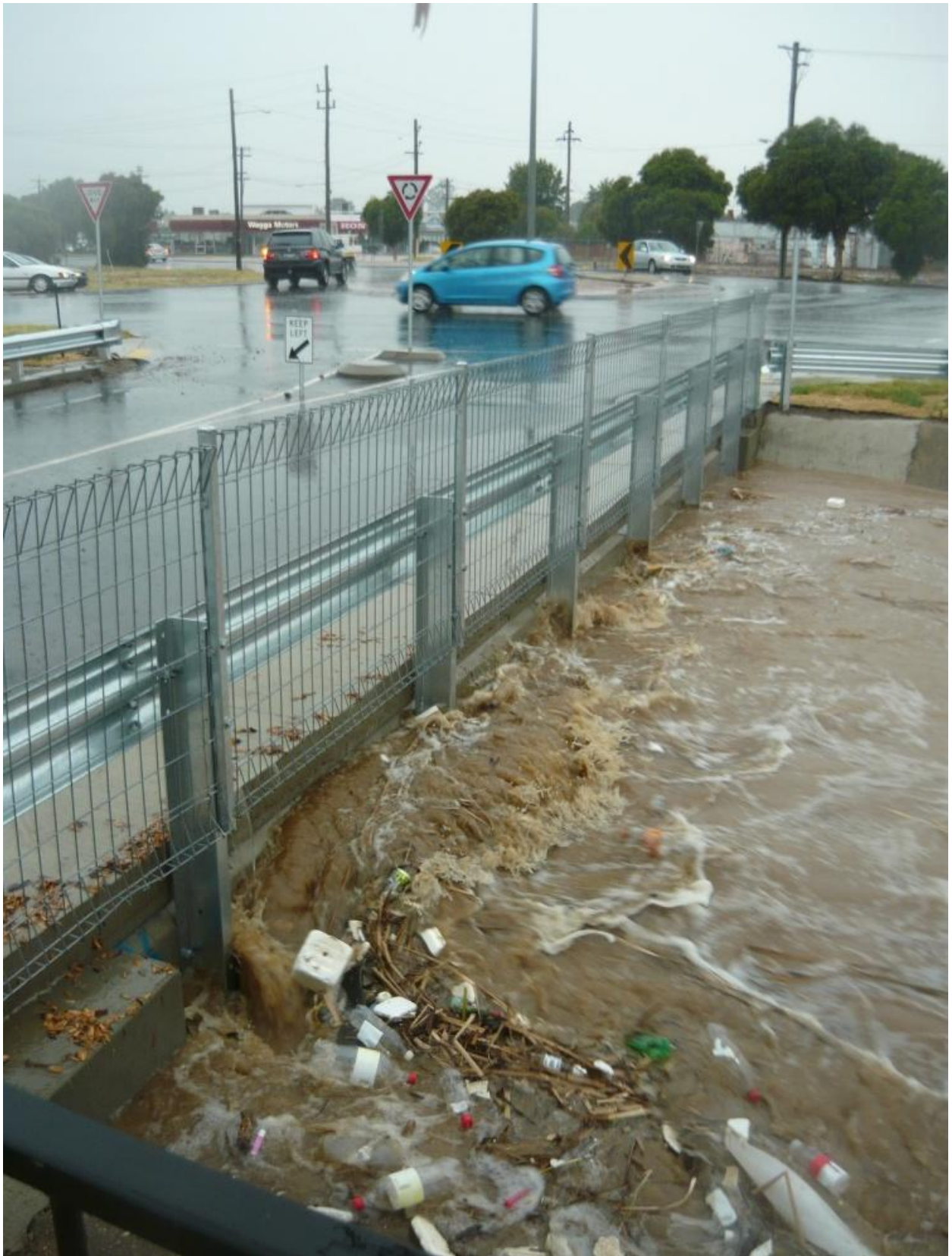


Figure 17 – U/S side of Bunnings Bridge (Eastern) (Dobney St in background)



Figure 18 - Looking South from next to Bunnings Site



Figure 19 - Fernleigh Rd looking North (U/S)



Figure 20 – Bunnings Bridge (Northern) looking North-West



Figure 21 – Looking D/S from Pound Access to Railway culvert



Figure 22 – Fernleigh Rd looking D/S and North to McDonalds Bridge



Figure 23 – Looking U/S at Dalman Parkway culvert



Figure 24 – Looking North with Ashmont confluence to left rear of picture



Figure 25 – Bunnings Bridge (northern) looking U/S



Figure 26 D/S Bunnings Bridge (east) looking North-East



Figure 27 – Looking North-East from Northern boundary of Bunnings



Figure 28 – Looking North-West from Northern boundary of Bunnings.



Figure 29 – Looking due North from Northern boundary of Bunnings



Figure 30 – Looking U/S from Pound Access Road (due South)



Figure 31 – Fernleigh Rd looking North at McDonalds Bridge.



Figure 32 – U/S of Pound Access road looking North



Figure 33 – Looking U/S of Pound Access Road



Figure 34 – Looking U/S of Fernleigh Road



Figure 35 – Looking U/S of Dalman Parkway



Figure 36 – Looking U/S from Ashmont confluence towards Bunnings Bridge (Northern)



Figure 37 – U/S of Pearson/Dobney St roundabout looking North



Figure 38 – Intersection of Pearson & Bye Streets



Figure 39 – Intersection of Morrow & Esplanade Road



Figure 40 – Looking D/S from McDonalds Bridge to North-West



Figure 41 – Corner of Morgan & Docker Streets looking to the North-East



Figure 42 – Morgan Street Drain from Docker Street (Docker St flooding in foreground)



Figure 43 – Looking East up Morgan Street



Figure 44 – Morgan Street looking East (Southern Side Street)



Figure 45 – Morgan Street (Northern Side Street)



Figure 46 – Looking at Shaw Street inundation



Figure 47 – Inundated park near Shaw Street.



Figure 48 - Remand Centre



Figure 49 - Shaw Street



Figure 50 – Looking U/S of Pearson / Dobney Street Intersection

190 Morgan St, October 2005









Figure 11 2007



Figure 12 2007



Figure 13 2007



Figure 14 2007



Figure 15 2007



Figure 65 Unknown Event



Figure 16 Unknown Event



Figure 17 Unknown Event



Figure 18 Unknown Event

