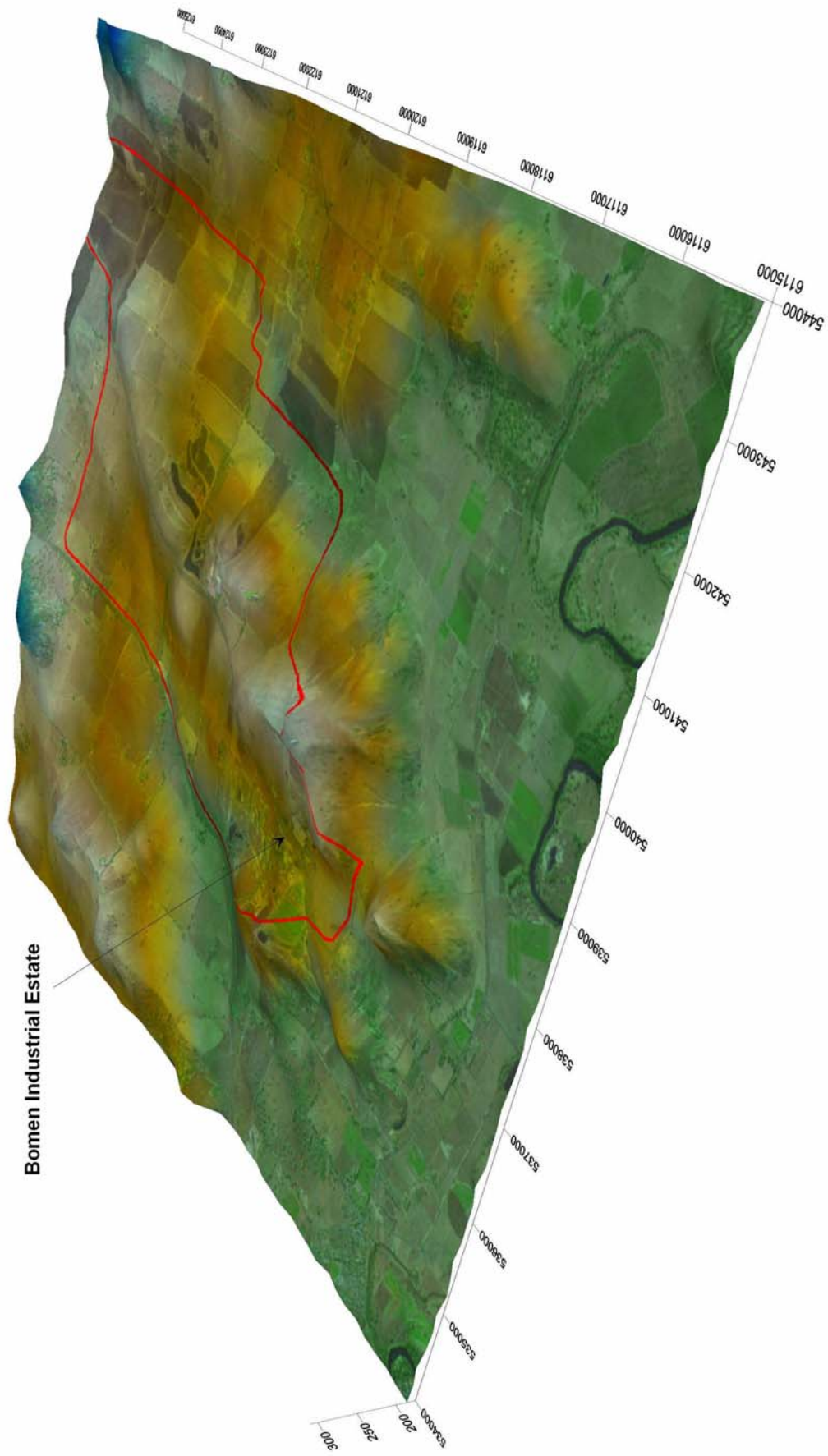


Location of study area



Pseudo three-dimensional representation of the local terrain

FIGURE 2

Annual and seasonal windroses for Wagga Wagga (1998)

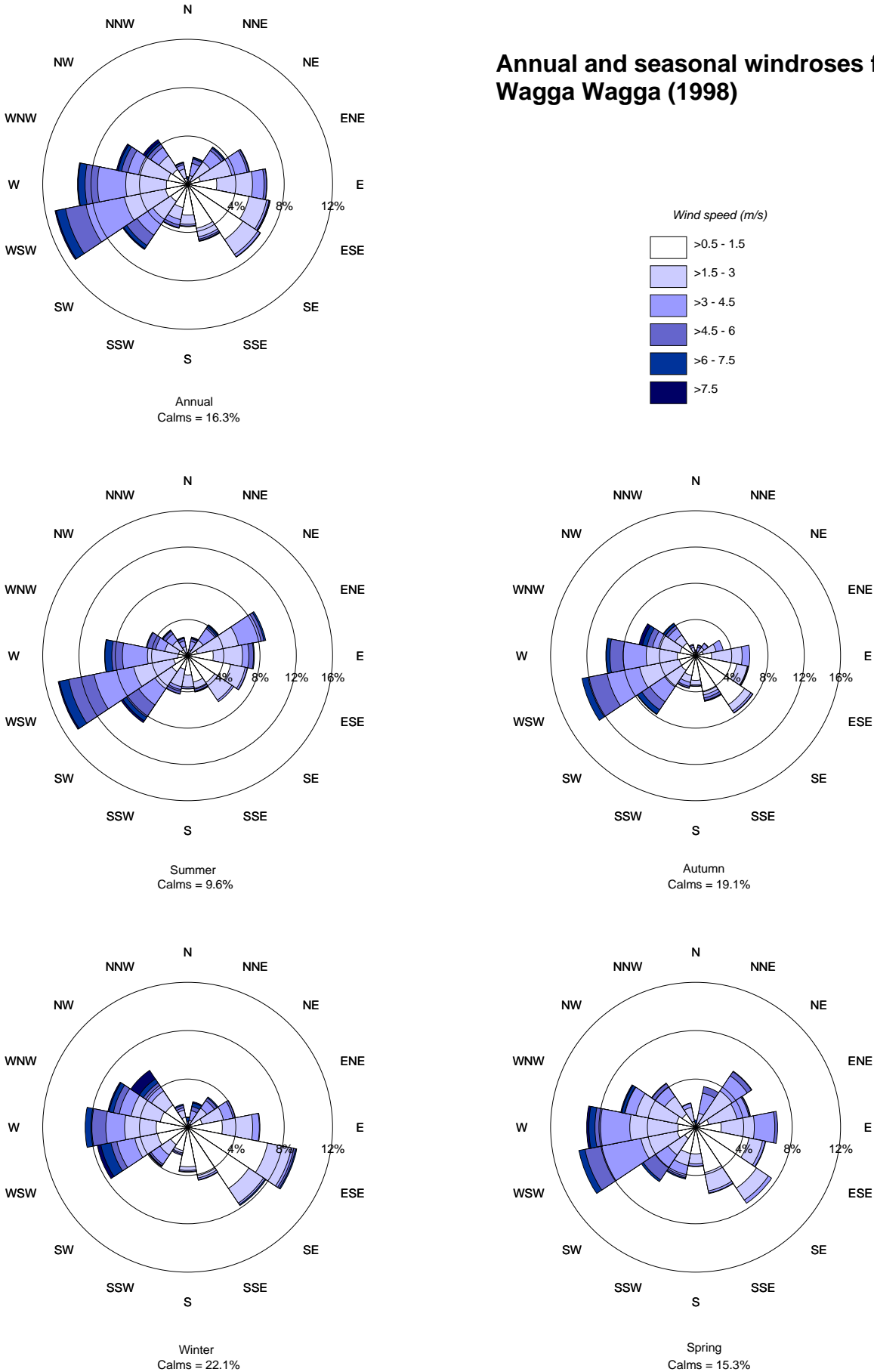
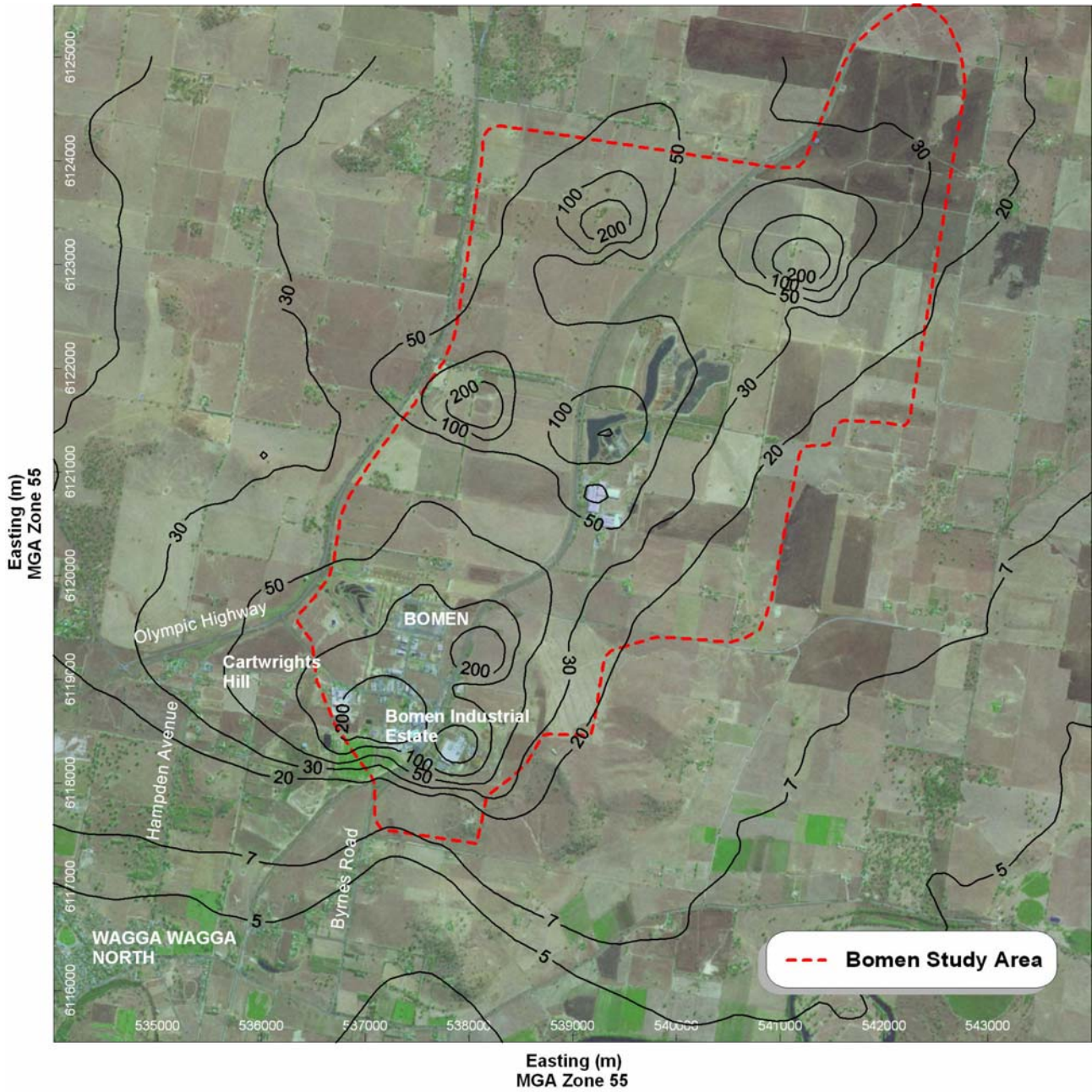
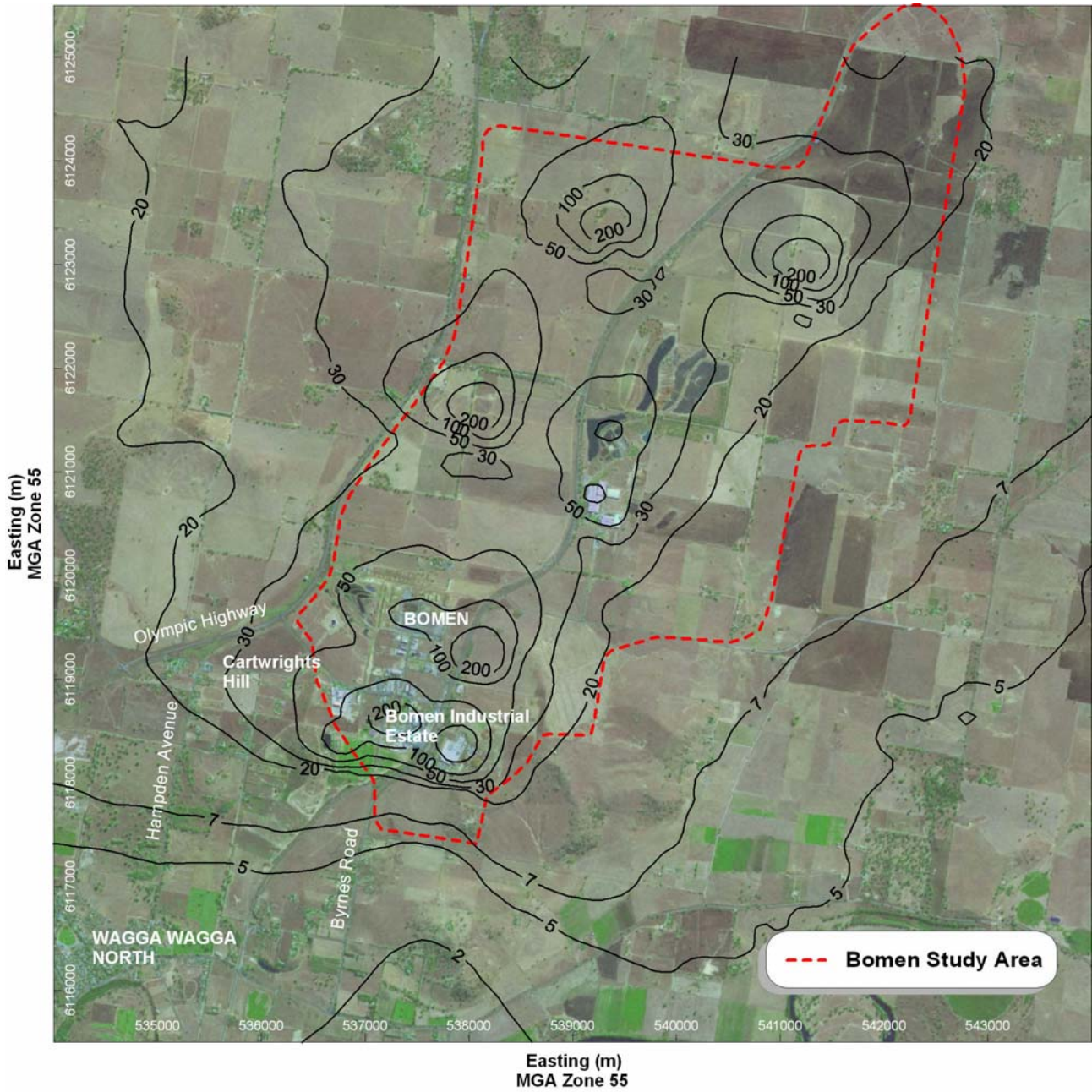


FIGURE 3



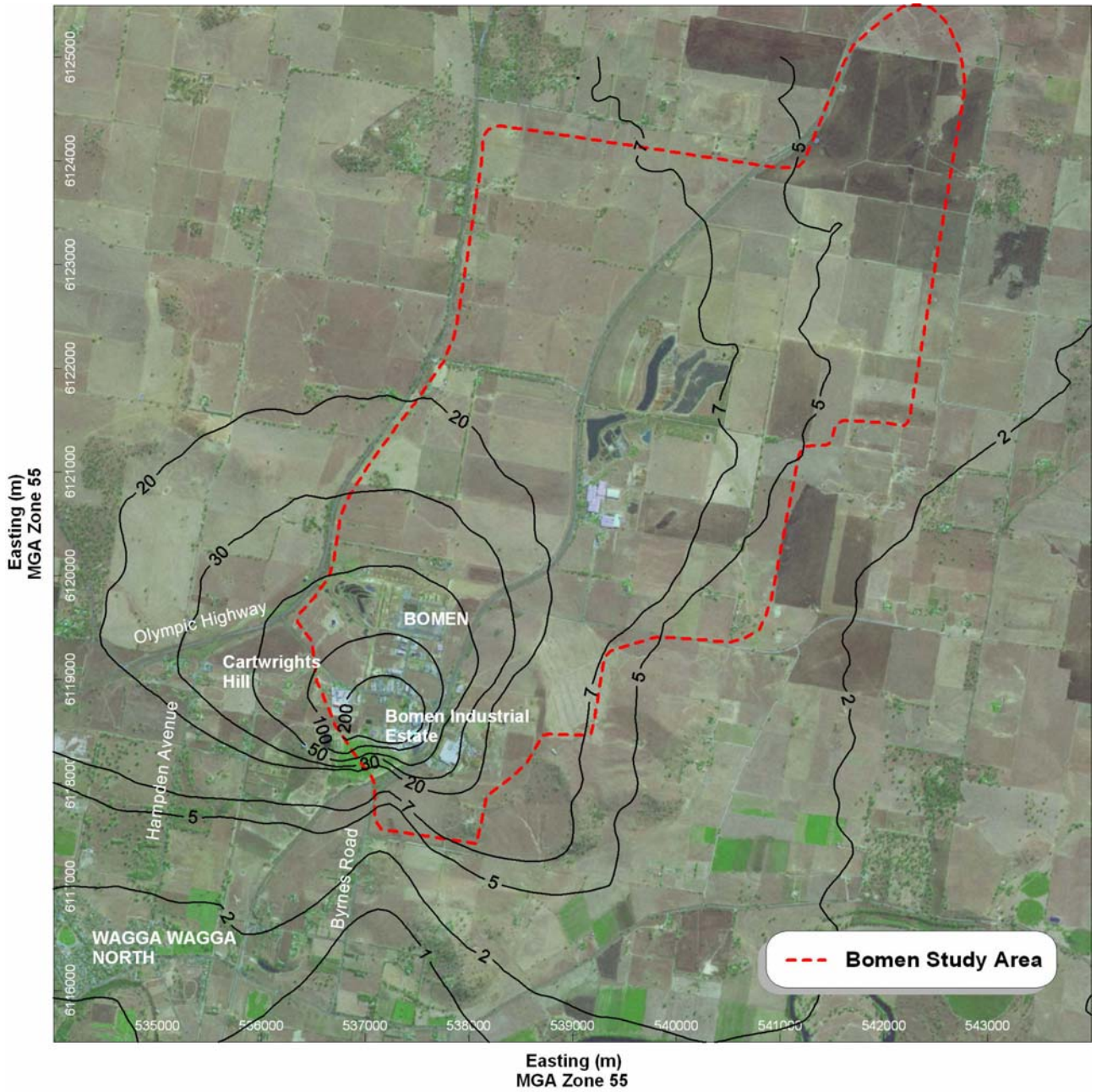
Predicted nose-response odour levels at the 99th percentile due to all sources (odour units)

FIGURE 4

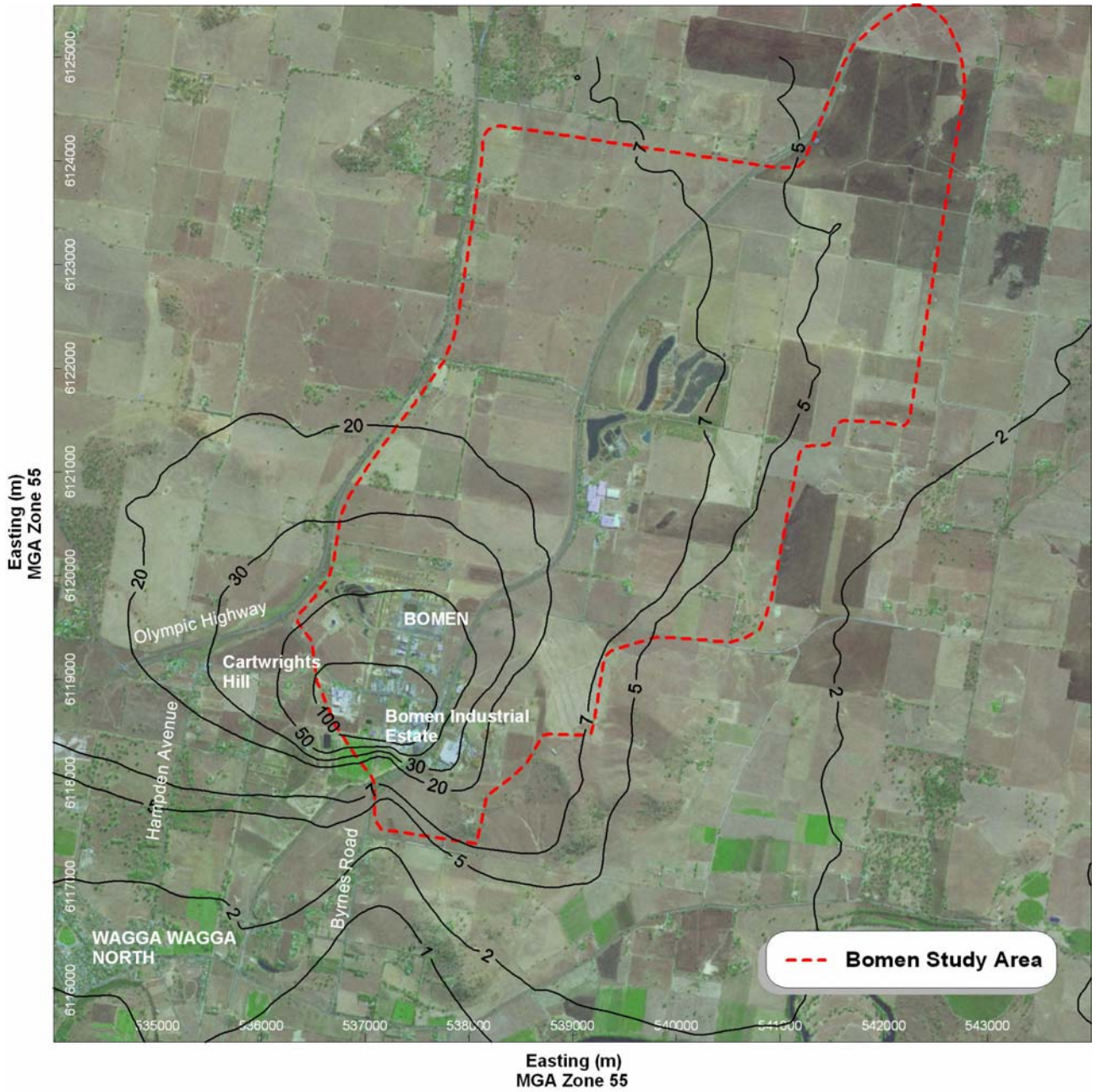


Predicted nose-response odour levels at the 99th percentile due to all sources - with odour controls where relevant (odour units)

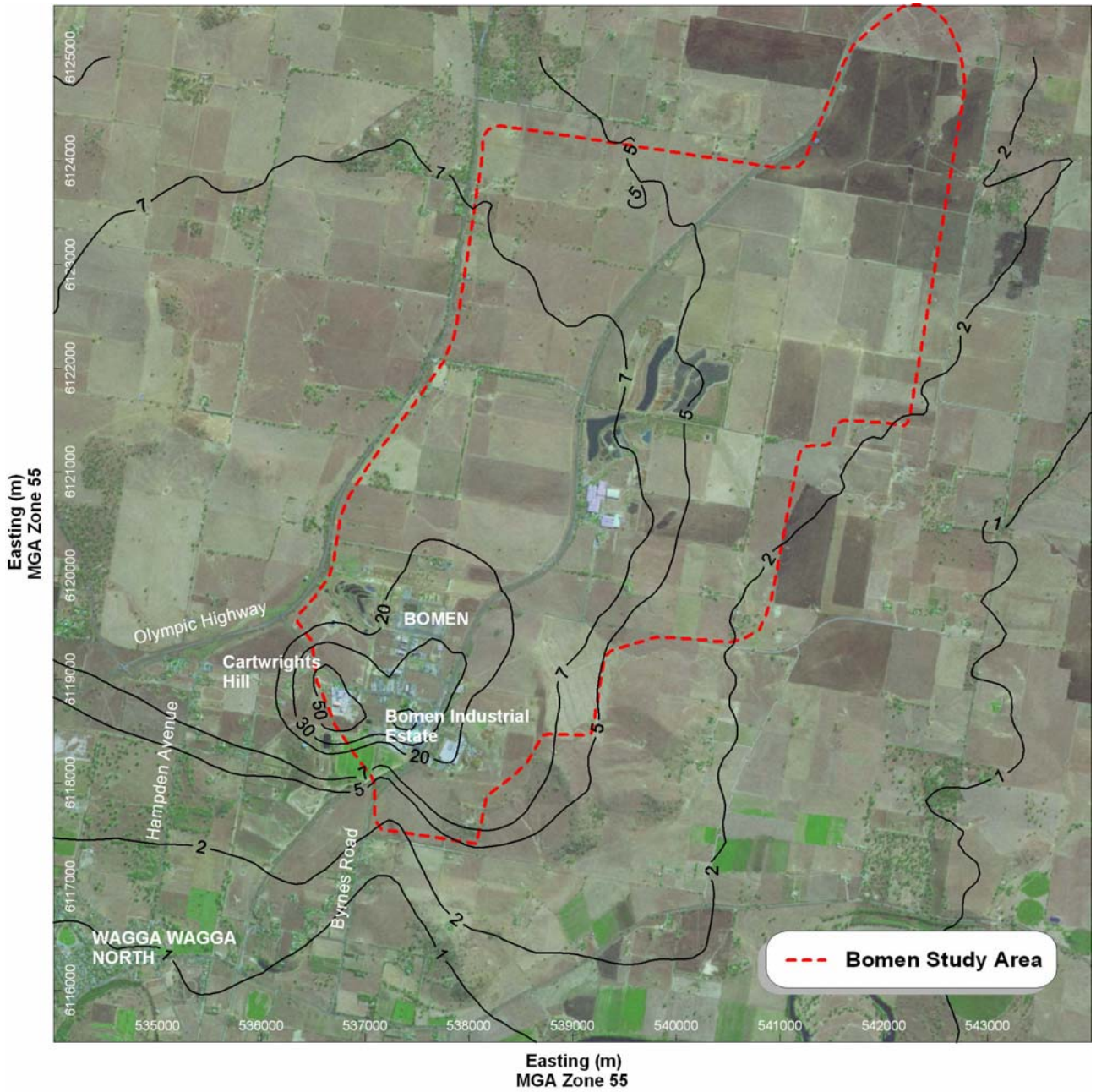
FIGURE 5



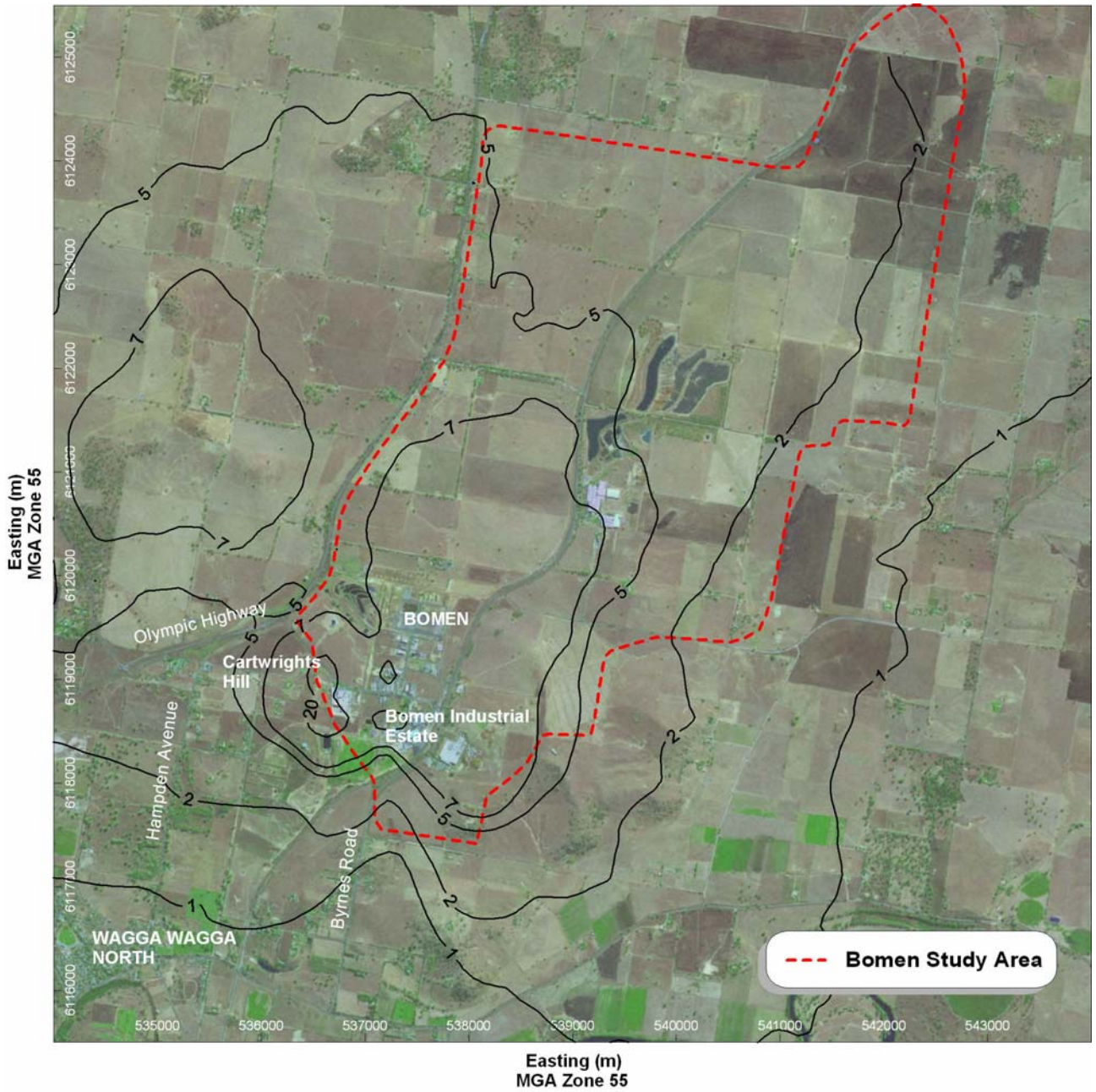
Predicted nose-response odour levels at the 99th percentile due to Cargill Foods (odour units)



Predicted nose-response odour levels at the 99th percentile due to Cargill Foods - sources 10 m high (odour units)



Predicted nose-response odour levels at the 99th percentile due to Cargill Foods - sources 20 m high (odour units)



Predicted nose-response odour levels at the 99th percentile due to Cargill Foods - sources 30 m high (odour units)