



# Public Art Expression of Interest

City, Suburbs & Villages:  
Menneke Park, Estella

## Acknowledgement of Country

Wagga Wagga City Council yali gulbali-yanhi ngurambang Wiradyuri.

Walumaldhaany-galang bala mayiny Wiradyuri.

Yindyamali-yanhi mudyiganggalang-bu balumbambal-bu balugirbam-bu.

Yindyamali-yanhi bagaraygan ngurambang-guwal-i yandu murunwigi Wagga Wagga-dha.

Ngiyanhi gulbali-bu yindyamali-bu guwiinyguliyalagu buyaa-bu giilaang-galam-bu.

Ngiyanhi gulbali-bu yindyamali-bu guwiinyguliyalagu dhaagun-bu bila-galam-bu nganha Wiradyuri-giyalang bala burrambin-bu nurranurra-bu.

Gulbali-yanhi Wiradyuri mayiny bagaraygan-guwal-bu bala yarruwala-bu waluwin-bu walanbam-bu dhirrangal-bu.

Wagga Wagga City Council acknowledges the traditional custodians of the land, the Wiradjuri/Wiradyuri people, and pays respect to Elders past, present and future and extends our respect to all First Nations Peoples in Wagga Wagga.

We recognise and respect their cultural heritage, beliefs and continuing connection with the land and rivers.

We also recognise the resilience, strength and pride of the Wiradjuri/Wiradyuri and First Nations Communities.



# Contents

---

Acknowledgement .....	2
Introduction.....	4
Public art principles .....	5
City, suburbs and villages.....	6
Creative opportunity .....	8
Overview.....	8
About the site .....	8
Vision .....	9
Budget.....	9
Commissioning process .....	10
How to apply .....	10
Eligibility .....	10
Assessment process.....	11
Submission timeframe .....	11
Scope .....	11
Design Life .....	12
Materials and Maintenance .....	12
Parameters.....	12
Fee schedule.....	12
Artist responsibilities .....	12
Disclosure.....	13
Useful Council documents.....	13
Contact.....	13
Site location and images .....	14

Opposite: Murrumbidgee River



# Introduction

---

Wagga Wagga City Council (Council) is committed to becoming a thriving, innovative, connected and inclusive community on the Murrumbidgee, where culture and creativity engage and involve the whole community.

This commission is part of the Public Art Plan 2022–2026, which you can read at [www.publicartwagga.com.au](http://www.publicartwagga.com.au)

The Public Art Plan is a framework for public art in the City of Wagga Wagga and surrounding villages, outlining the scope of commissions and projects for the period of 2022–2026.

Carla Gottgens, *The Surface*, 2024. Currawarna Community Centre and playground. Photo: Carla Gottgens



# Principles

The **development** and **implementation** of public art projects and initiatives through the Public Art Plan 2022-2026 is governed by the following principles:

## Activate

- ▶ Communicate the unique stories, spirit and heritage of the whole of the City of Wagga Wagga, including its rural villages and neighbourhoods.
- ▶ Encourage access and participation from all of the community through creative experiences and placemaking.
- ▶ Support and enhance cultural tourism and the visitor economy.

## Collaborate

- ▶ Engage with artists of all career stages, with value placed on local and First Nations artists when commissioning new works.
- ▶ Collaborate with a diverse range of stakeholders, including state and federal government bodies, community groups and organisations, business and industry.
- ▶ Ensure all projects and programs are carried out in a fair and transparent manner, and in accordance with industry and local government best practice.

## Celebrate

- ▶ Celebrate the culture and heritage of the traditional custodians of the land, the Wiradjuri people.
- ▶ Promote the cultural and social diversity of the whole community through enhancement of the visual and environmental beauty of the city.
- ▶ Highlight the unique characteristics of the local natural environment and ecosystems.

## Innovate

- ▶ Challenge and stimulate audiences and the wider community.
- ▶ Develop projects at the highest levels of creativity, artistic excellence, and innovation.
- ▶ Incorporate art throughout the city in ways that blurs the line between art and urban design.



# City, suburbs and villages



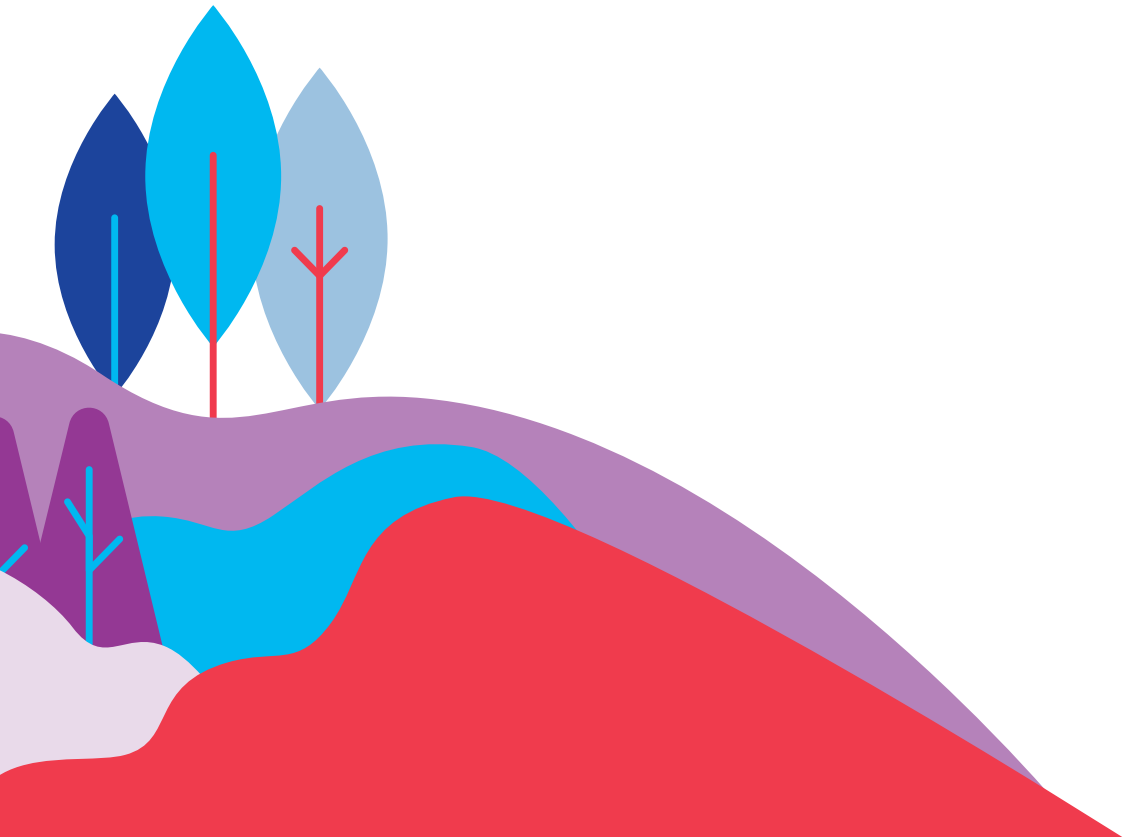
Wagga Wagga is a city of diverse and vibrant communities across our many neighbourhoods and villages. The Wagga Wagga City Council Public Art Collection branches across the CBD, through the suburbs and out to the villages activating and beautifying public spaces for both locals and visitors.

The Public Art Plan 2022—2026 will:

**Seek out opportunities to commission public artworks throughout the Wagga Wagga LGA, including our new and growing suburbs and rural villages.**

Celebrate	The unique histories and stories of our communities and look to the future of our city
Activate	The new and growing suburbs in our city as well as the unique histories of our established suburbs and villages
Innovate	Consider diverse artforms and creative projects to reflect the community and create opportunities for congregation and play
Collaborate	Local communities; Wagga Wagga City Council

We commission works that find creative ways to put our Public Art Principles into action. The commissioned artwork will contribute to making Wagga Wagga a strong, connected and vibrant community.







John Wood, *Kidsville*, 2012. Wagga Wagga Botanic Gardens. Photo: Patrick Ronald



# Creative opportunity

---



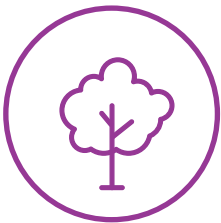
## Overview

Wagga Wagga City Council is seeking Expressions of Interest (EOI) from experienced artists to design and produce a functional public artwork for installation in Menneke Park in the suburb of Estella.

The purpose of the project is to celebrate the story of the park's namesake August Menneke and create a new experience for park users. The addition of a new public artwork will help activate this established park in a new and innovative way as the population continues to grow and change in this location.

Any eligible artist or collective is encouraged to apply through Council's EOI process by submitting a concept design for the site. The details for this process and site specifics are outlined below.

The artwork must be installed no later than 31 October 2025. This can be subject to weather and/or artist availability.



## About the site

### Menneke Park, Estella

Menneke Park is located in the suburb of Estella to the north of the Wagga Wagga CBD. Estella is bordered by the Wagga Wagga Campus of Charles Sturt University and the rapidly growing suburbs of Boorooma and Gobbagombalin. Estella has an Estimated Resident Population of 5,443 (Australian Bureau of Statistics 2023) with 19.8% of the population aged 25 to 34 years.

Menneke Park is surrounded by residential homes and has a playground, basketball and football facilities, and is home to many mature gum trees and other native plants. There is a walking/bike path that winds its way around the edge of the park and continues through the green spaces behind the homes. There is ample space around the playground for the installation of the artwork (see images on page 14).

### August Menneke

August Menneke was born in 1838 in Bakenem, Germany. He emigrated to Australia, arriving in New South Wales in about 1858. Immediately after serving an apprenticeship in the blacksmithing trade, he established his own business in North Wagga, next to the Black Swan Hotel.

August remained in North Wagga for several years. By the 1870s, he had won fame, particularly for the 'Menneke' bullock bells he made that gained the nickname 'The Wagga Pot'. He had a perfect ear for the sound of a bell, and his bells had a clear tenor quality, which could be heard miles away.

August was honoured with the naming of the park in Estella and is still remembered through Wagga Wagga as one of the City's finest blacksmiths and a legendary bell-maker.

For further information on August Menneke:

<https://museumriverina.com.au/explore/collections/highlights/the-wagga-pot-bullock-bells-made-by-august-menneke,-c.-1860s-70s>



---

## Vision

Wagga Wagga City Council would like to commission an artwork to be an addition to the playground space in Menneke Park that is tactile and/or interactive. The artwork must be site-specific and appropriate for people of all ages.

Inspired by August Menneke and his famous bullock bells, the artwork will honour the blacksmithing history in Wagga Wagga and should be play-friendly for children of all ages and abilities.

**Logistics:** The public artwork may require footings into the ground, this must be accounted for in the artists proposal and budget.

**Note:** Menneke Park is surrounded by residential properties, any sound-based proposals must take this into consideration.



## Budget

A total budget of up to \$15,000 (excluding GST) has been allocated to this commission.

The applicants budget proposal must include all costs relating to the installation of the artwork. This includes but is not limited to:

- Artist fee (including superannuation)
- All equipment and materials required
- Final design of proposed artwork in finished format
- Site visits as needed
- Preparation of site
- Installation on site

Artist fees are to be based upon the current NAVA Schedule of Fees for Practitioners, and demonstrated in the budget. Superannuation is applicable to artists labour (fees) only and must be calculated at the current superannuation guarantee rate which is 11.5% in 2024/25.



# Commissioning process

---



## How to apply

Access the EOI application form through [wagga.smartygrants.com.au/MennekePark](http://wagga.smartygrants.com.au/MennekePark).

The application will ask you to supply:

- A concept design of your proposed artwork/s, or indication of artistic direction, drawing attention to how the design connects to the vision for the project on Page 9 of this document.
- A short biography and a CV detailing relevant experience (up to three pages).
- Samples of your work.
- Examples of recently completed commissions, artworks or performances, including referee contact details for each commission.
- A detailed budget covering all aspects of your project.
- Evidence of a public liability insurance policy with coverage to at least \$20,000,000. If you do not have public liability insurance, you must upload a quote for public liability insurance coverage and factor this cost into your proposed budget.

For further information on public liability insurances refer to:

- [visualarts.net.au/membership/join/](http://visualarts.net.au/membership/join/)
- [duckforcover.com.au/minigen/](http://duckforcover.com.au/minigen/)
- [flyingarts.org.au/Flying-Arts-Insurance-pg19119.html](http://flyingarts.org.au/Flying-Arts-Insurance-pg19119.html)

Will Maguire, *Arm Horn*, 2016. Sydney Street, Tarcutta. Photo: Patrick Ronald





---

## Eligibility

We encourage all artists/collectives eligible to work in Australia and who have a current ABN to apply through this EOI. Artists/collectives must have no outstanding grant acquittals or outstanding debts owing to Council.



## Assessment process

The Public Art Advisory Panel (PAAP), in consultation with Council staff, will assess all applications. The successful artist will be required to enter into a contract with Wagga Wagga City Council for the project.

The PAAP will assess the applications based on the following:

- Artistic merit, integrity and creativity of proposal
- Experience and expertise in previous projects
- Appropriateness of design to site and theme
- The proposal adherence to our Public Art Principles (refer to page 4 of this document).
- The artist's capacity to complete the work within schedule and on budget.

The selection made by the PAAP will be reported to Council for their endorsement at the next Ordinary Meeting of Council as per the Public Art Policy (POL109). After this time the artists will be notified of the outcome of their submission.



## Submission timeframe

The Expressions of Interest (EOI) period opens Monday 5 May 2025 and closes 11:59pm AEST (end of day) Monday 2 June 2025.

The indicative key dates for the process are outlined below. Please note these dates are subject to change and installation dates will be finalised with the successful artist.

Task	Timeline	Responsibility
Submissions open	Monday 5 May 2025	Council
Submissions due	11:59pm AEST (end of day), 2 June 2025	Artist
Artist notified	22 July 2025	Council
Installation Date	Must be completed no later than 31 October 2025	Artist

## Scope

The scope of works includes:

- Design and supply of an artwork - the design is to consider / respond to the site, place and theme provided
- Supply of all materials required
- Supply and operation of all equipment required
- Preparation of surfaces for application of the work
- Completion of the works on or prior to agreed completion date
- Application of an anti-graffiti coat on completed artwork
- Risk assessment and management of site during the project

## Design life

The minimum projected lifespan is five years, where the Council or the building owner has discretion to remove the furniture or commission a replacement artwork. Anti-graffiti materials should be considered and included in the artist budget.

In the case of major vandalism or significant damage, Council will determine the course of action in consultation with the artist where possible. The safety of the community is paramount, and the artist must consider all safety standards relevant to art in public spaces.

## Materials and maintenance

Materials are to address Australian Standards, be high quality, durable (to withstand extreme heat/cold) and installation and usage to follow recommended WHS processes and procedures. Artists will be encouraged to use environmentally sustainable products and methods where possible.

Material selection and design must consider practical elements such as heat absorption for sitting and easy cleaning and graffiti resistant surfaces. Artists may utilise design techniques including but not limited to stencil, metal sculpture or landscape design.

On completion, the artist must provide Council with a maintenance schedule for the life of the artwork. The artwork will be maintained by Council for a minimum period of five years (except in the case of severe damage, see Design Life section above). This maintenance cost will be covered by Council.

## Parameters

The artwork should not portray or depict material in a way which discriminates against or vilifies a person or part of the community on account of race, ethnicity, nationality, gender, age, sexual preference, religion, disability, mental illness or political belief. It must not contain crude language, depict highly sexual or violent images, or contain personal details.

In addition:

- The artwork should demonstrate artistic excellence
- The work must be suitable for general audiences
- The artwork cannot be advertising

## Fee schedule

Payment of fees will be made in two stages:

- 50% paid on acceptance of concept design, commission of selected artist and signing of the contract
- 50% paid on completion of the artwork and after final inspection and approval by Council

## Artist responsibilities

Council requires the project artist to:

- Manage and deliver the project within the agreed schedule
- Deliver the agreed design (as approved by Council)
- Work in accordance with best practice community cultural development principles and practices in the consultation, research, creative development and design
- Consult and liaise with Council staff, property owner, as required



- 
- Undertake site visits if necessary
  - Remediate the site if required
  - Hold all necessary permits/licences including a Working With Children Check and Elevated Work Platform licence, if necessary
  - Complete Council's online Work Health and Safety (WHS) induction prior to installation
  - Prepare and follow Safe Work Method Statements for the installation of the mural
  - Follow all applicable WHS standards
  - Deliver the project in accordance with an agreed set of delivery milestones
  - Provide artist statement and be available for media interviews if required

## Disclosure

The Artist agrees that they shall not, without the prior written agreement of Wagga Wagga City Council represent or purport to represent Council; or express views or opinions purported to be representative of the Council; or disclose or make public any information or material acquired or produced in connection with providing the Services.

## Useful Council documents

- [Public Art Plan 2022—2026](#)
- [Cultural Plan 2020—2030](#)
- [Community Strategic Plan 2040](#)

## Contact

For further information, contact:  
Lauren Reynolds, Cultural Officer  
Wagga Wagga City Council  
Email: [publicart@wagga.nsw.gov.au](mailto:publicart@wagga.nsw.gov.au)  
Phone: 1300 292 442



## Site location and images

---











Foreground: John Wood, *Wilga Sticks*, 2020. Background: *Wilga Park Paint by Numbers*, 2021. Koorringal. Photo: Patrick Ronald

## Contact us

---



Visit our website  
**wagga.nsw.gov.au**



Like us on Facebook  
**City of Wagga Wagga**



Email us  
**council@wagga.nsw.gov.au**



Follow us on Instagram  
**@WaggaCouncil**



Talk with us  
**1300 292 442**



Follow us on Twitter  
**@WaggaCouncil**



**City of  
Wagga Wagga**

PO Box 20, Wagga Wagga NSW 2650  
Cnr Baylis and Morrow Streets, Wagga Wagga NSW