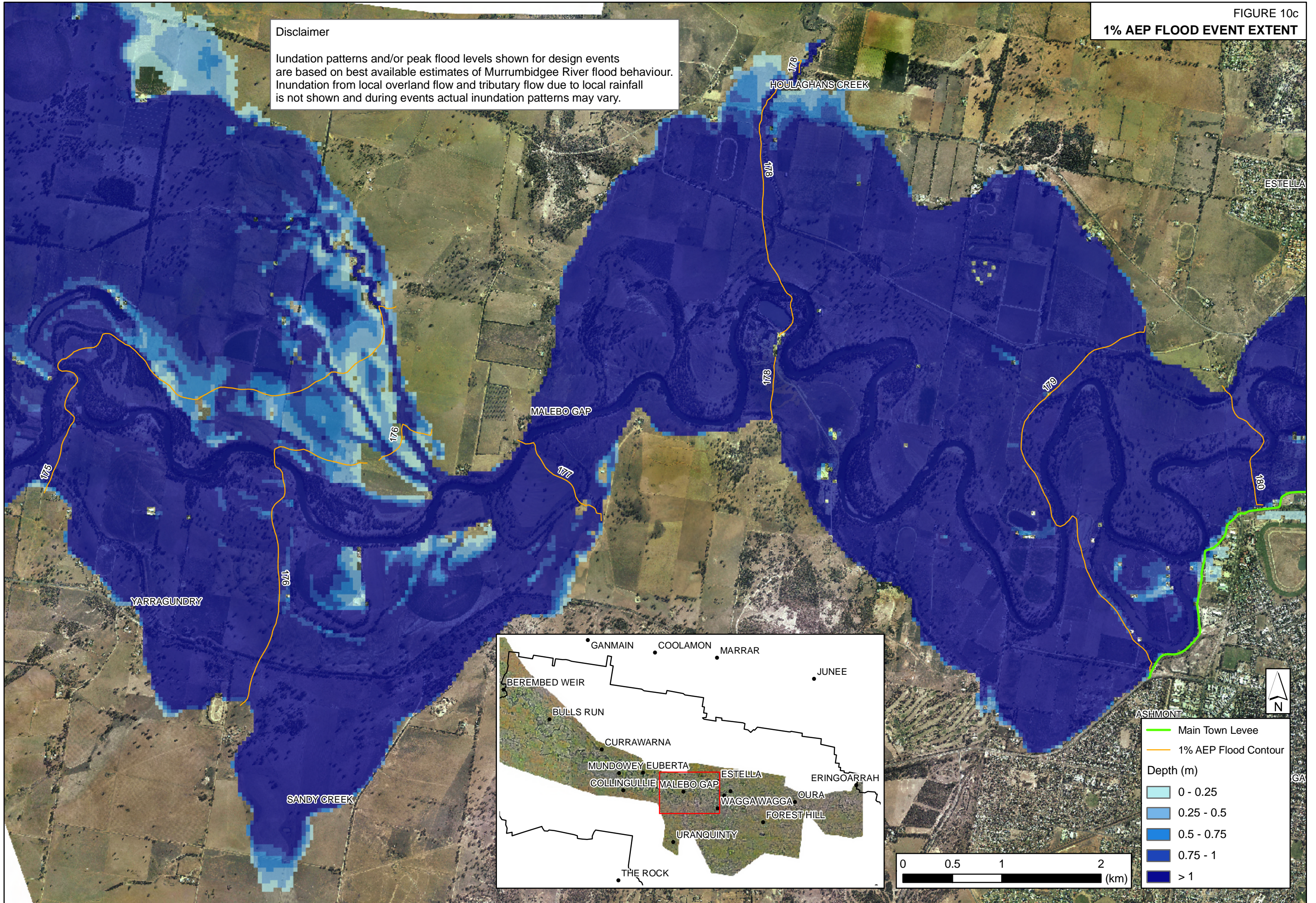


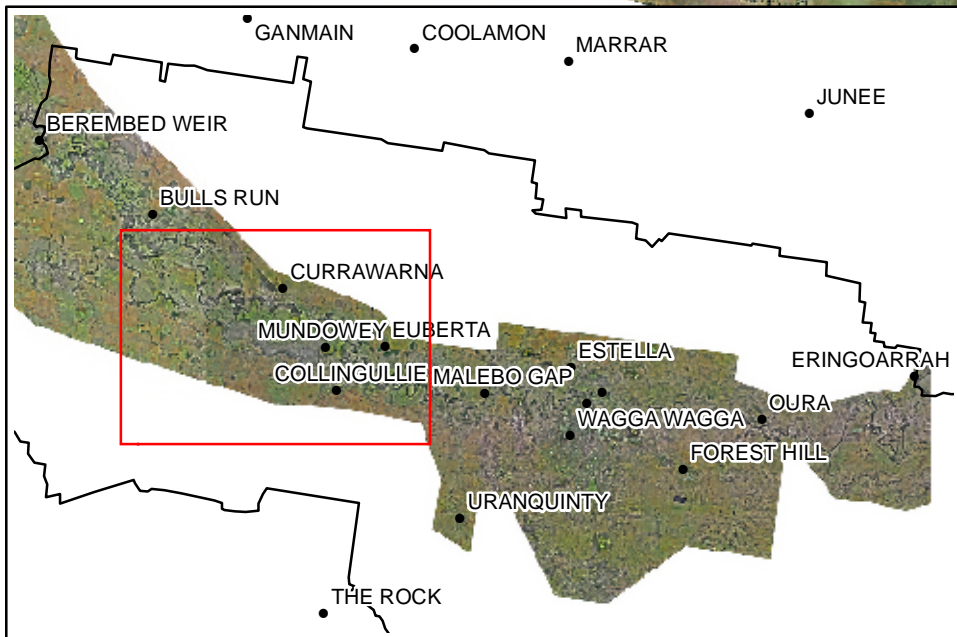
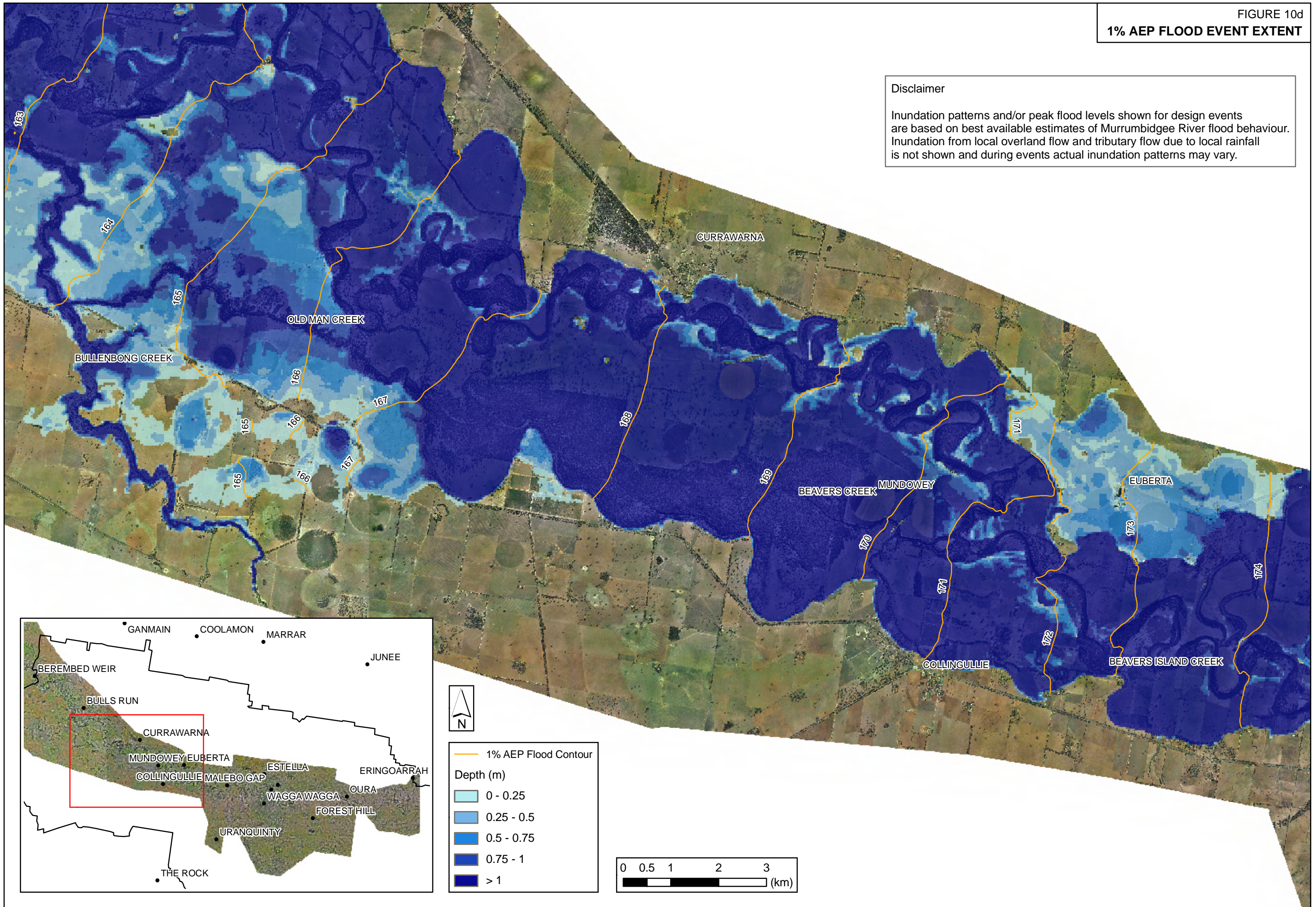
Disclaimer
 Inundation patterns and/or peak flood levels shown for design events are based on best available estimates of Murrumbidgee River flood behaviour. Inundation from local overland flow and tributary flow due to local rainfall is not shown and during events actual inundation patterns may vary.



— Main Town Levee
— 1% AEP Flood Contour
Depth (m)
 0 - 0.25
 0.25 - 0.5
 0.5 - 0.75
 0.75 - 1
 > 1

Disclaimer

Inundation patterns and/or peak flood levels shown for design events are based on best available estimates of Murrumbidgee River flood behaviour. Inundation from local overland flow and tributary flow due to local rainfall is not shown and during events actual inundation patterns may vary.



	1% AEP Flood Contour
Depth (m)	
	0 - 0.25
	0.25 - 0.5
	0.5 - 0.75
	0.75 - 1
	> 1

