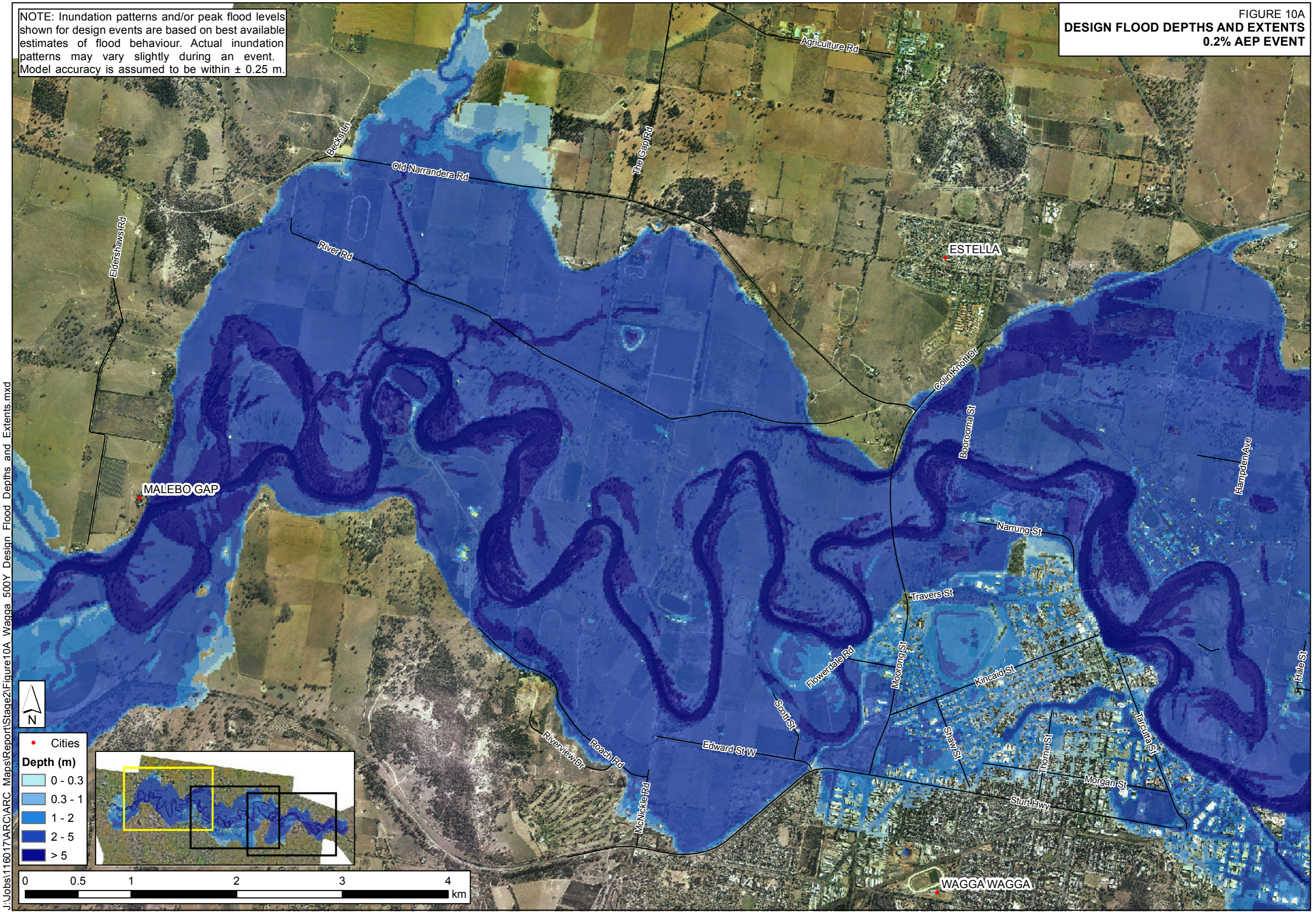


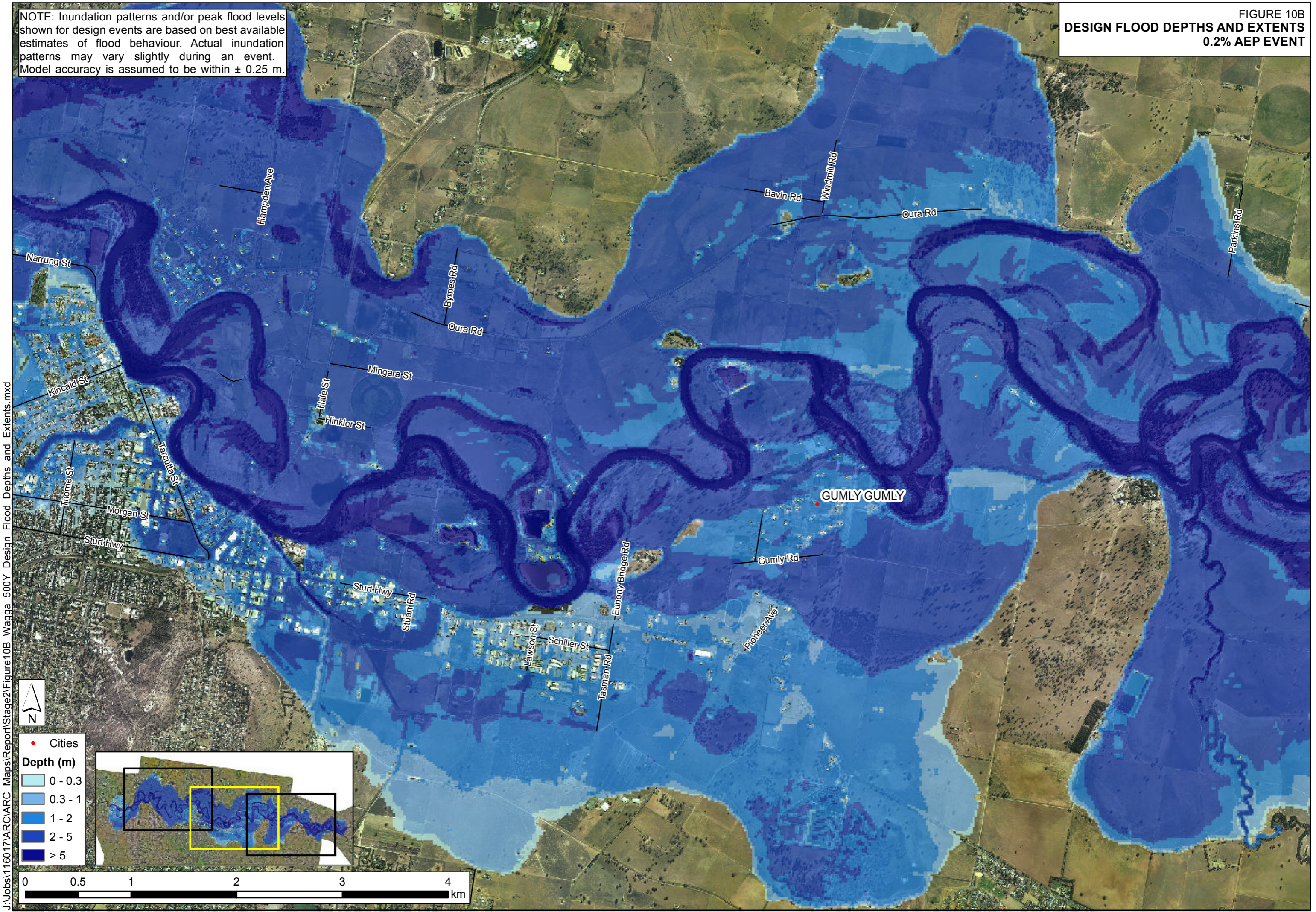
NOTE: Inundation patterns and/or peak flood levels shown for design events are based on best available estimates of flood behaviour. Actual inundation patterns may vary slightly during an event. Model accuracy is assumed to be within ± 0.25 m.

FIGURE 10A
DESIGN FLOOD DEPTHS AND EXTENTS
0.2% AEP EVENT



NOTE: Inundation patterns and/or peak flood levels shown for design events are based on best available estimates of flood behaviour. Actual inundation patterns may vary slightly during an event. Model accuracy is assumed to be within ± 0.25 m.

FIGURE 10B
DESIGN FLOOD DEPTHS AND EXTENTS
0.2% AEP EVENT



J:\Jobs\1160\17\ARC\ARC Maps\Report\Stage2\Figure10B Wagga 500Y Design Flood Depths and Extents.mxd



- Cities
- Depth (m)**
- 0 - 0.3
- 0.3 - 1
- 1 - 2
- 2 - 5
- > 5

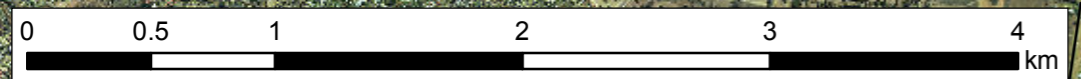
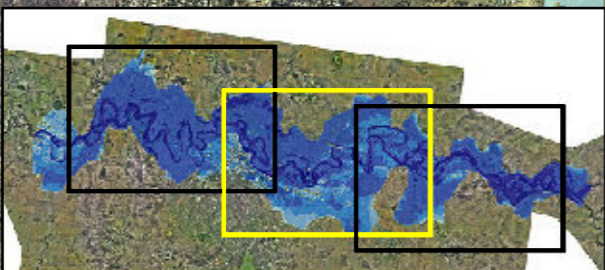
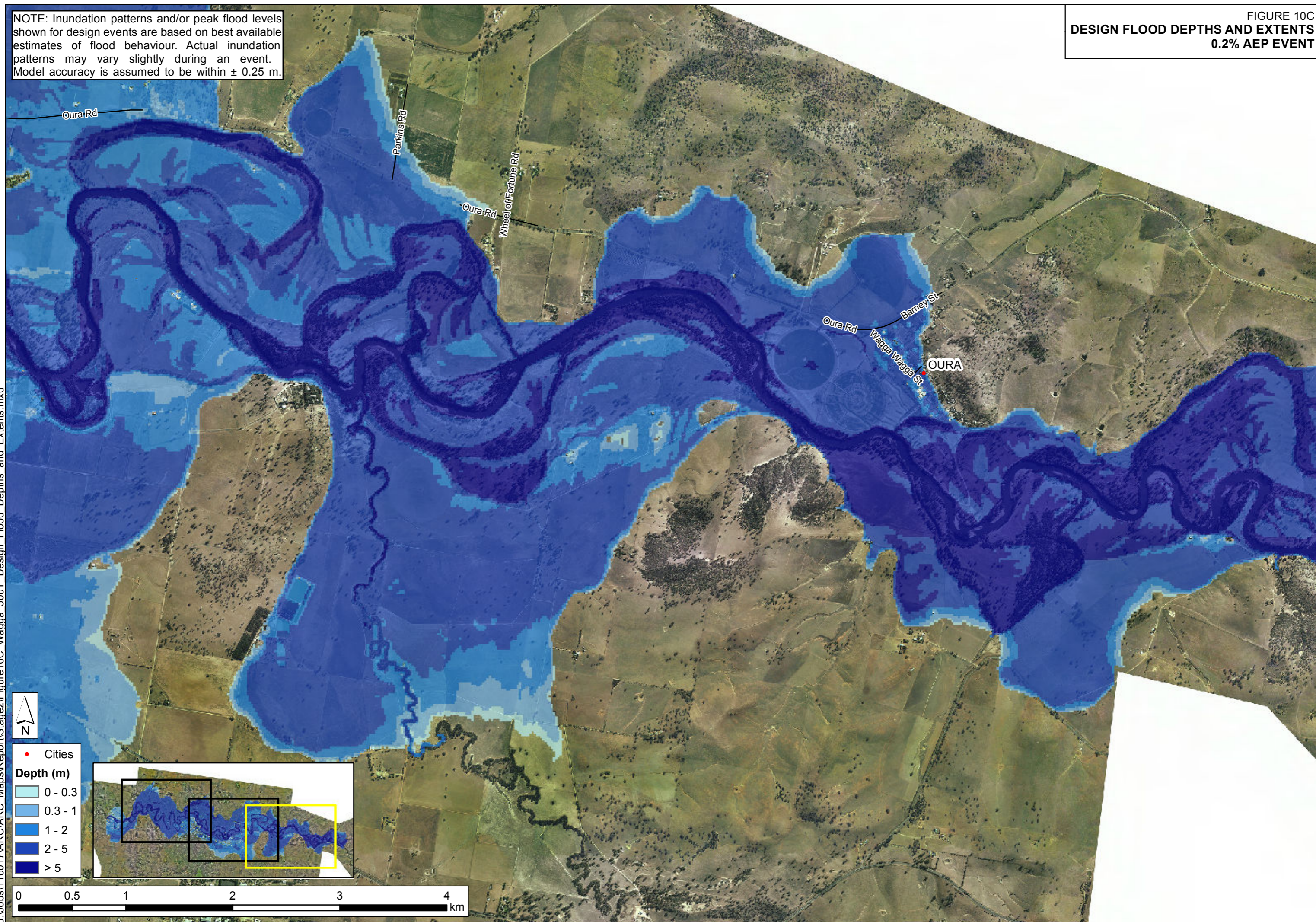


FIGURE 10C
DESIGN FLOOD DEPTHS AND EXTENTS
0.2% AEP EVENT

NOTE: Inundation patterns and/or peak flood levels shown for design events are based on best available estimates of flood behaviour. Actual inundation patterns may vary slightly during an event. Model accuracy is assumed to be within ± 0.25 m.



J:\Jobs\1160\17\ARC\ARC_Maps\Report\Stage2\Figure10C_Wagga_500Y_Design_Flood_Depths_and_Extents.mxd