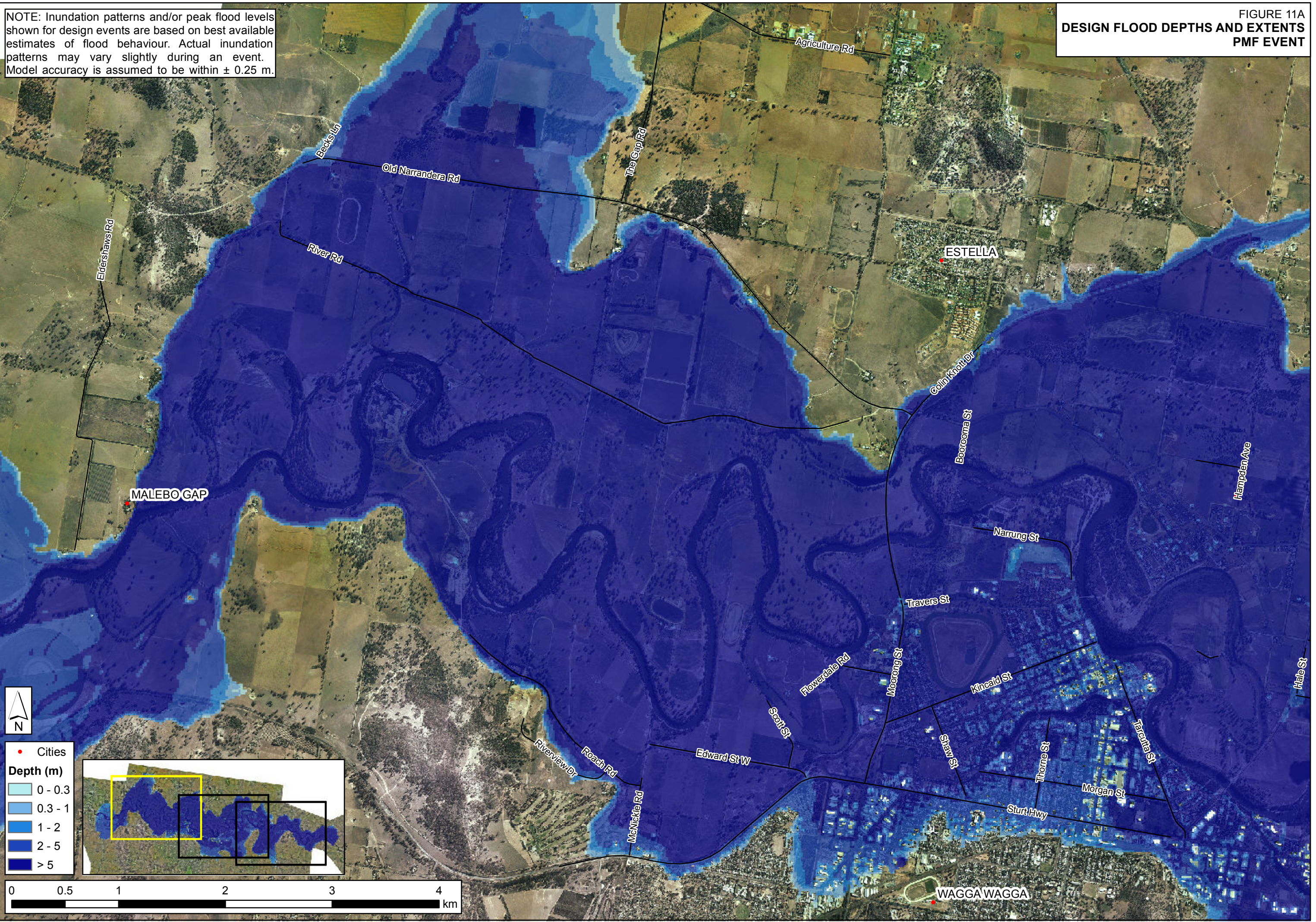


NOTE: Inundation patterns and/or peak flood levels shown for design events are based on best available estimates of flood behaviour. Actual inundation patterns may vary slightly during an event. Model accuracy is assumed to be within ± 0.25 m.

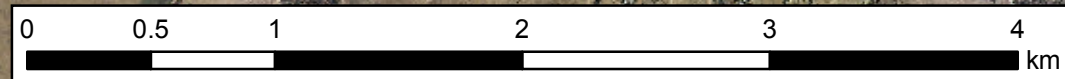
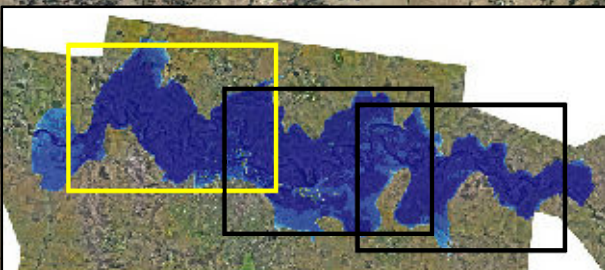
FIGURE 11A
DESIGN FLOOD DEPTHS AND EXTENTS
PMF EVENT



J:\Jobs\1160\17\ARC\ARC_Maps\Report\Stage2\Figure11A_Wagga_PMF_Design_Flood_Depths_and_Extents.mxd

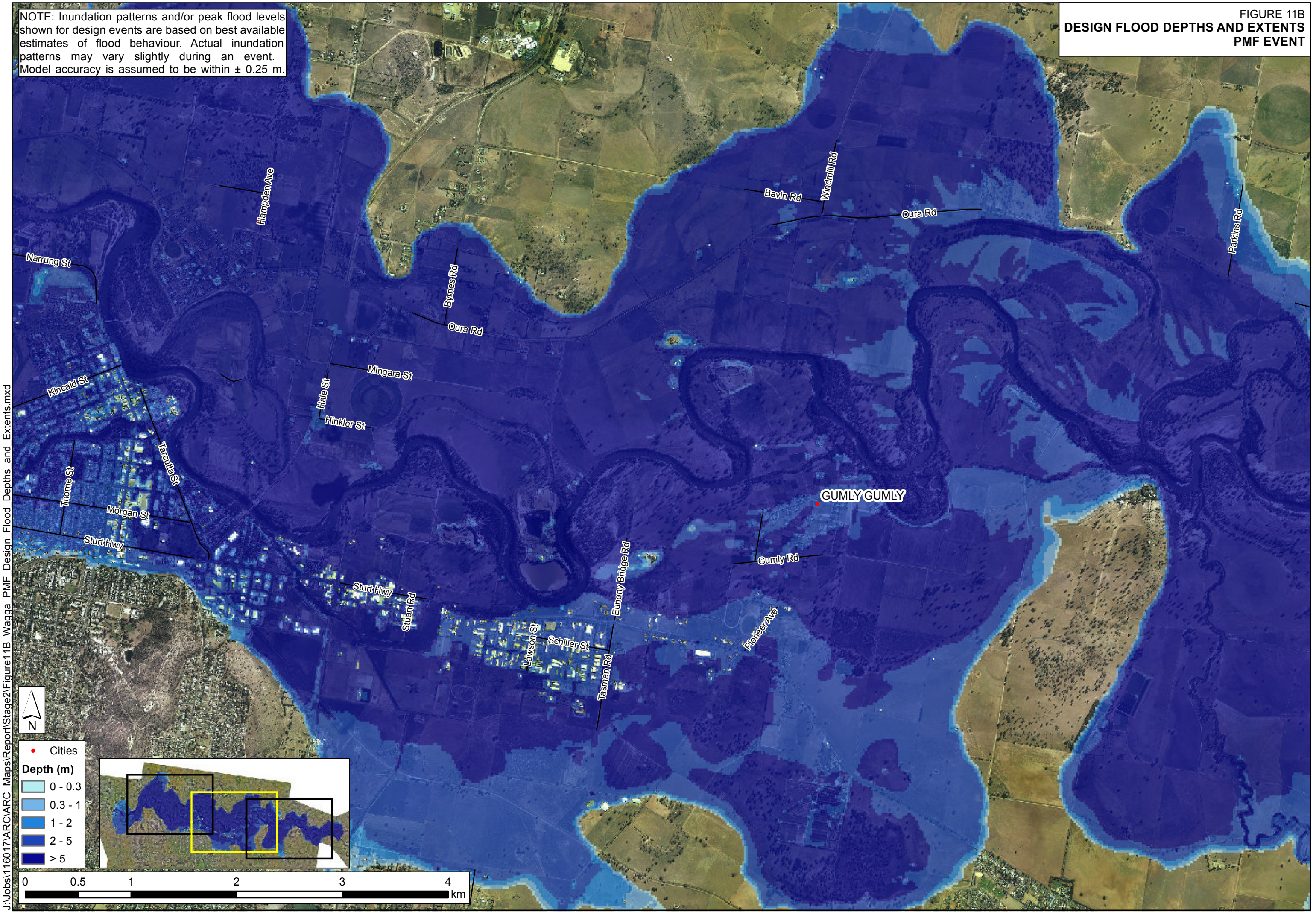


- Cities
- Depth (m)**
- 0 - 0.3
- 0.3 - 1
- 1 - 2
- 2 - 5
- > 5



NOTE: Inundation patterns and/or peak flood levels shown for design events are based on best available estimates of flood behaviour. Actual inundation patterns may vary slightly during an event. Model accuracy is assumed to be within ± 0.25 m.

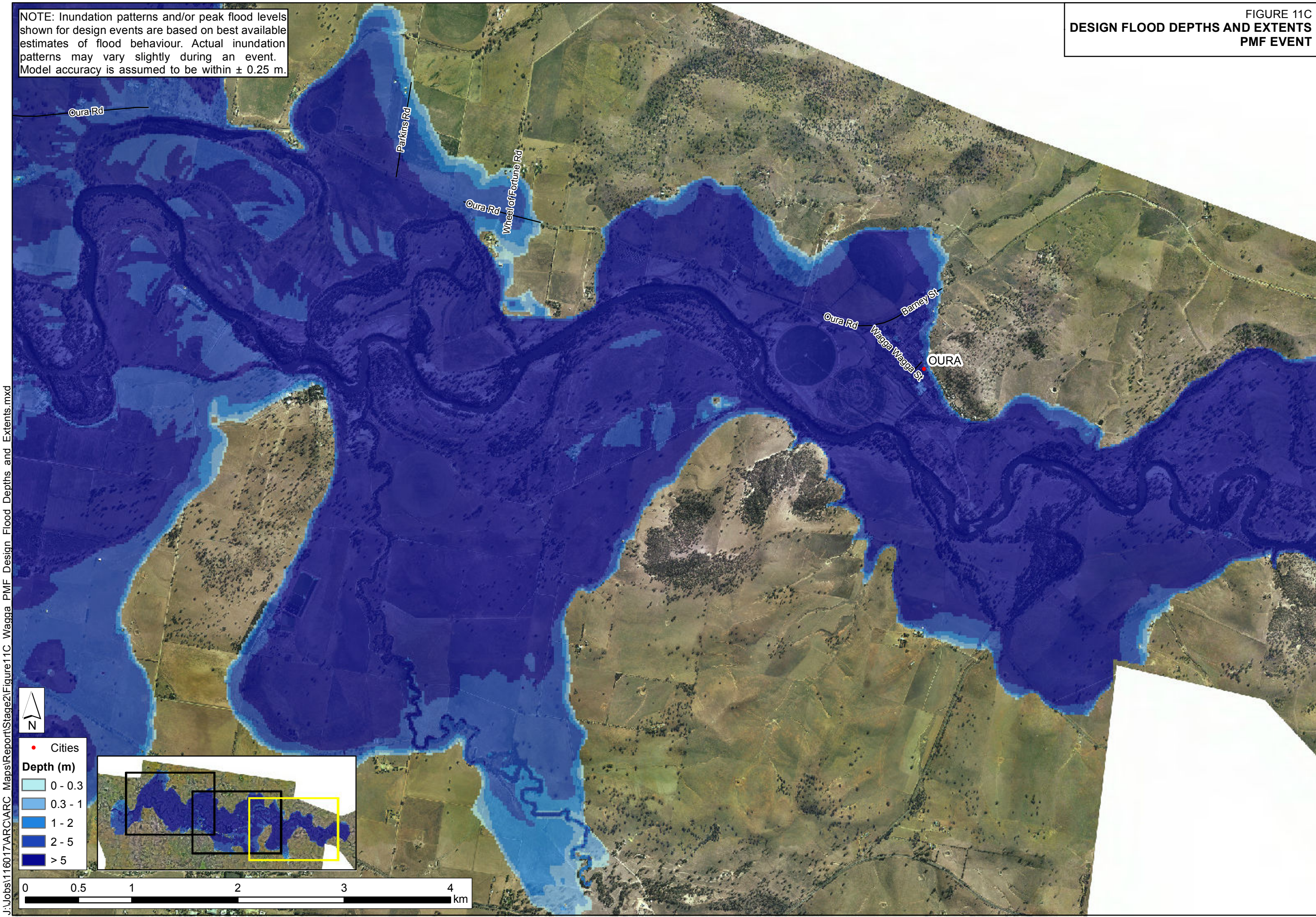
FIGURE 11B
DESIGN FLOOD DEPTHS AND EXTENTS
PMF EVENT



J:\Jobs\1160\17\ARC\Map\Report\Stage2\Figure11B Wagga PMF Design Flood Depths and Extents.mxd

FIGURE 11C
DESIGN FLOOD DEPTHS AND EXTENTS
PMF EVENT

NOTE: Inundation patterns and/or peak flood levels shown for design events are based on best available estimates of flood behaviour. Actual inundation patterns may vary slightly during an event. Model accuracy is assumed to be within ± 0.25 m.



J:\Jobs\1160\17\ARC\ARC_Maps\Report\Stage2\Figure11C_Wagga_PMF_Design_Flood_Depths_and_Extents.mxd