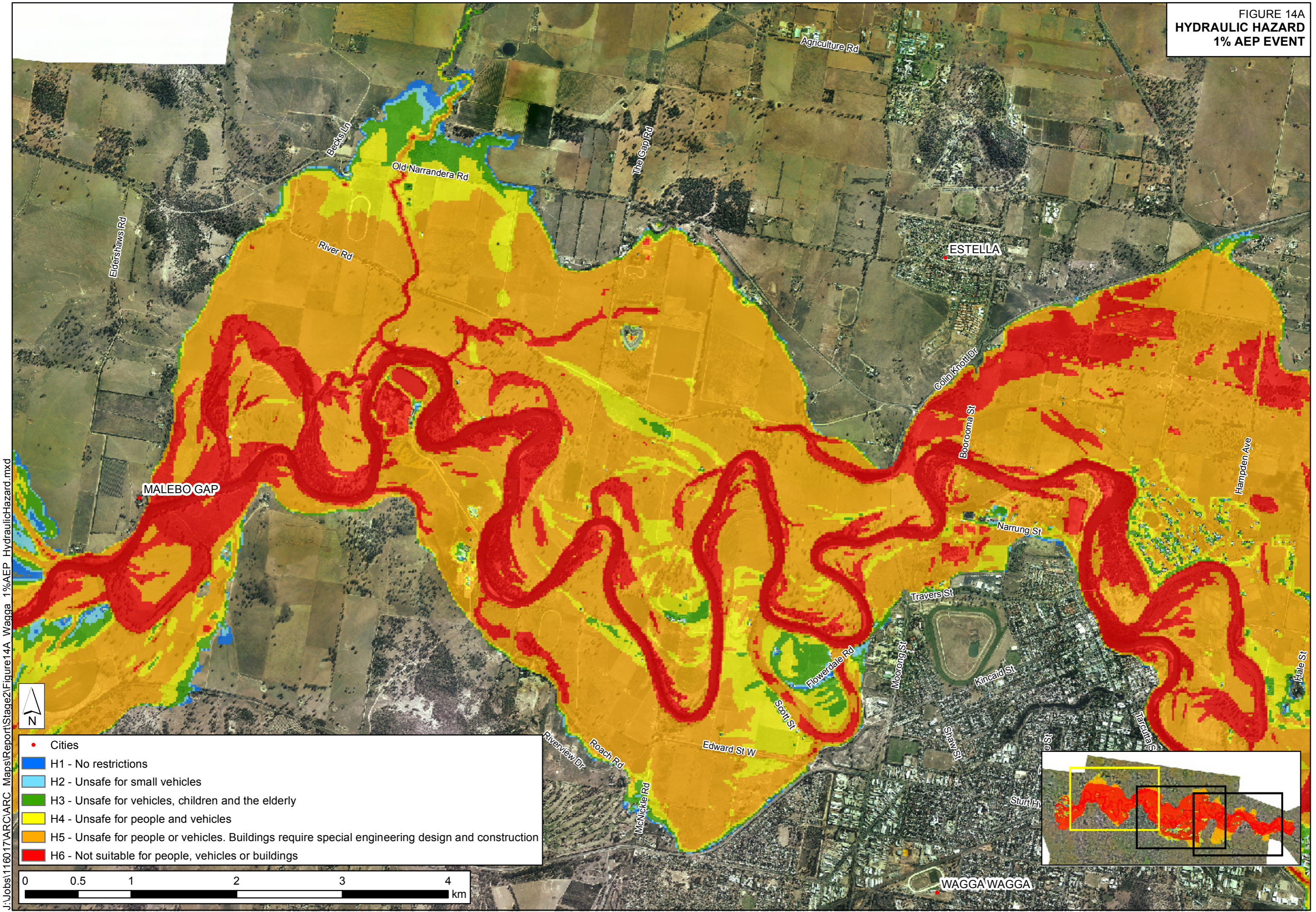


FIGURE 14A  
HYDRAULIC HAZARD  
1% AEP EVENT



J:\Jobs\1160\17\ARC Maps\Report\Stage2\Figure14A\_Wagga\_1%AEP\_HydraulicHazard.mxd



- Cities
- H1 - No restrictions
- H2 - Unsafe for small vehicles
- H3 - Unsafe for vehicles, children and the elderly
- H4 - Unsafe for people and vehicles
- H5 - Unsafe for people or vehicles. Buildings require special engineering design and construction
- H6 - Not suitable for people, vehicles or buildings

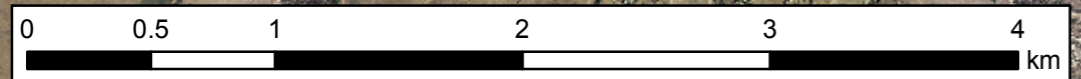
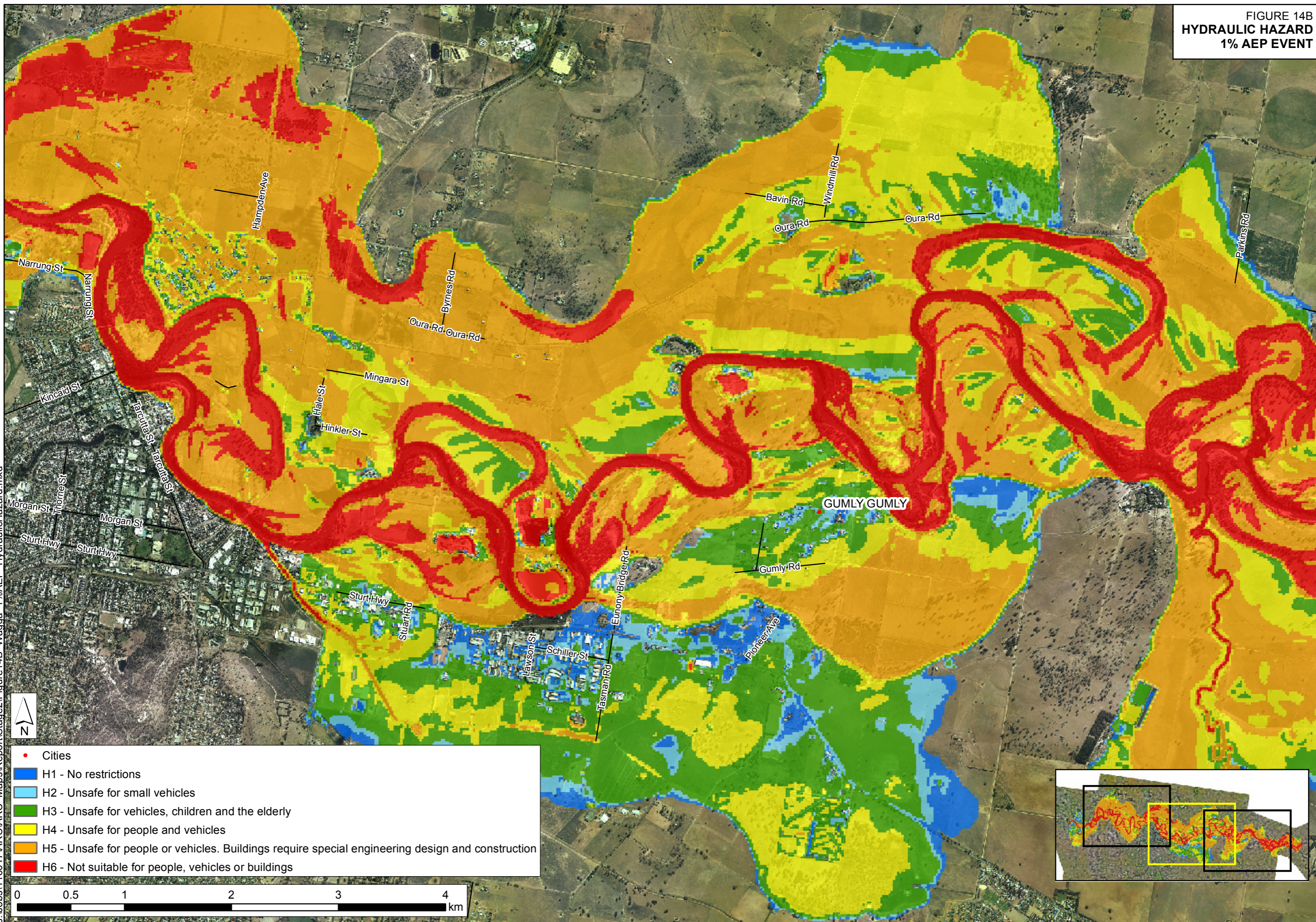


FIGURE 14B  
HYDRAULIC HAZARD  
1% AEP EVENT



J:\Jobs\1160\17\ARC\ARC Maps\Report\Stage2\Figure14B Wagga 1%AEP HydraulicHazard.mxd



- Cities
- H1 - No restrictions
- H2 - Unsafe for small vehicles
- H3 - Unsafe for vehicles, children and the elderly
- H4 - Unsafe for people and vehicles
- H5 - Unsafe for people or vehicles. Buildings require special engineering design and construction
- H6 - Not suitable for people, vehicles or buildings

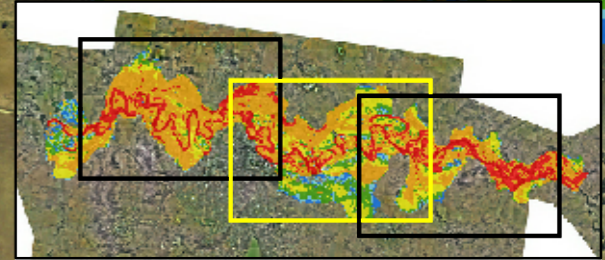
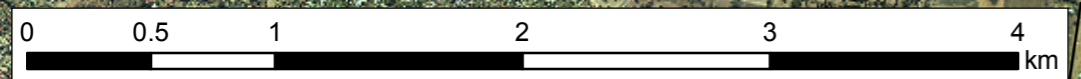


FIGURE 14C  
HYDRAULIC HAZARD  
1% AEP EVENT

