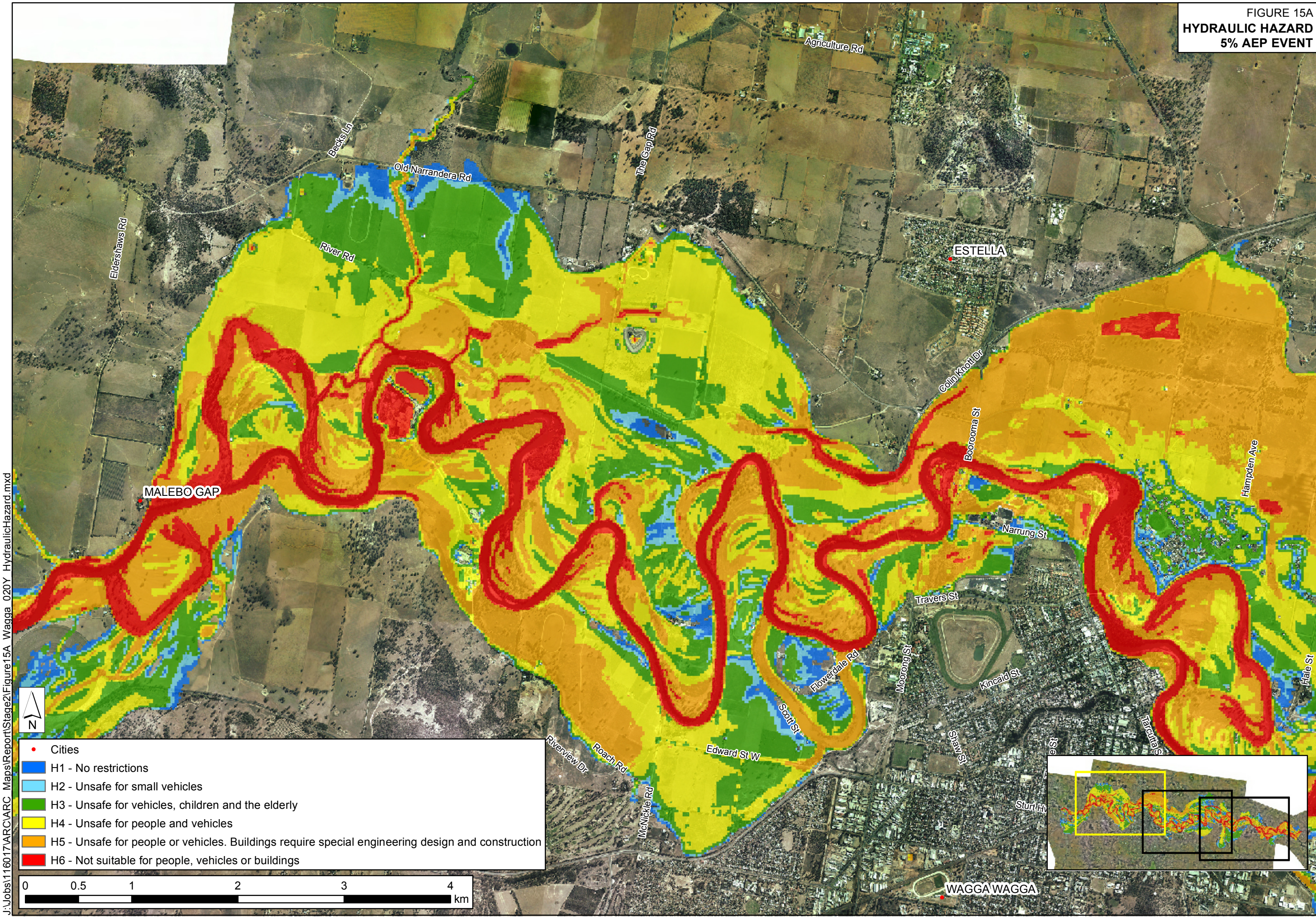
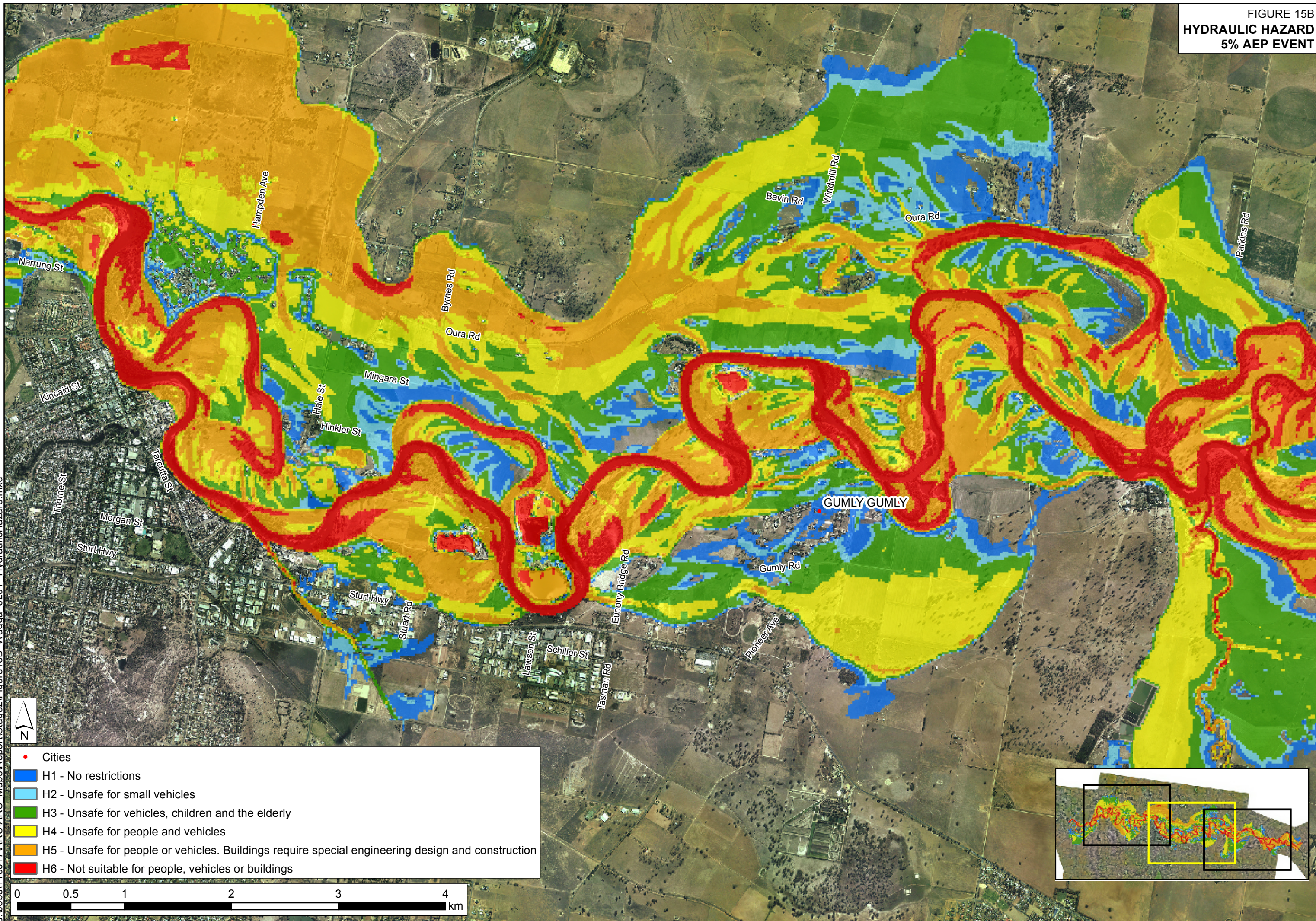


FIGURE 15A
HYDRAULIC HAZARD
5% AEP EVENT



J:\Jobs\1160\17\ARC\ARC Maps\Report\Stage2\Figure15A_Wagga_020Y_HydraulicHazard.mxd

FIGURE 15B
HYDRAULIC HAZARD
5% AEP EVENT



J:\Jobs\1160\17\ARC Maps\Report\Stage2\Figure15B Wagga 020Y HydraulicHazard.mxd



- Cities
- H1 - No restrictions
- H2 - Unsafe for small vehicles
- H3 - Unsafe for vehicles, children and the elderly
- H4 - Unsafe for people and vehicles
- H5 - Unsafe for people or vehicles. Buildings require special engineering design and construction
- H6 - Not suitable for people, vehicles or buildings

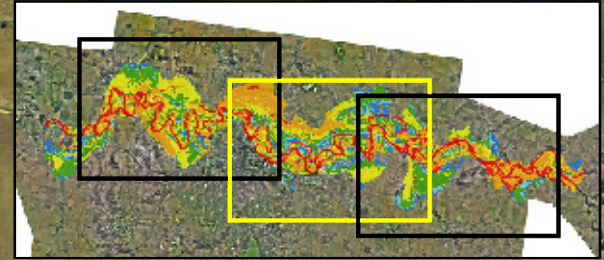
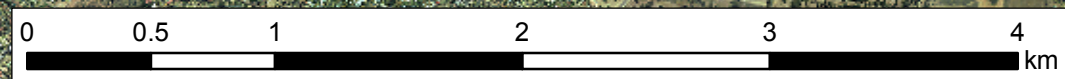
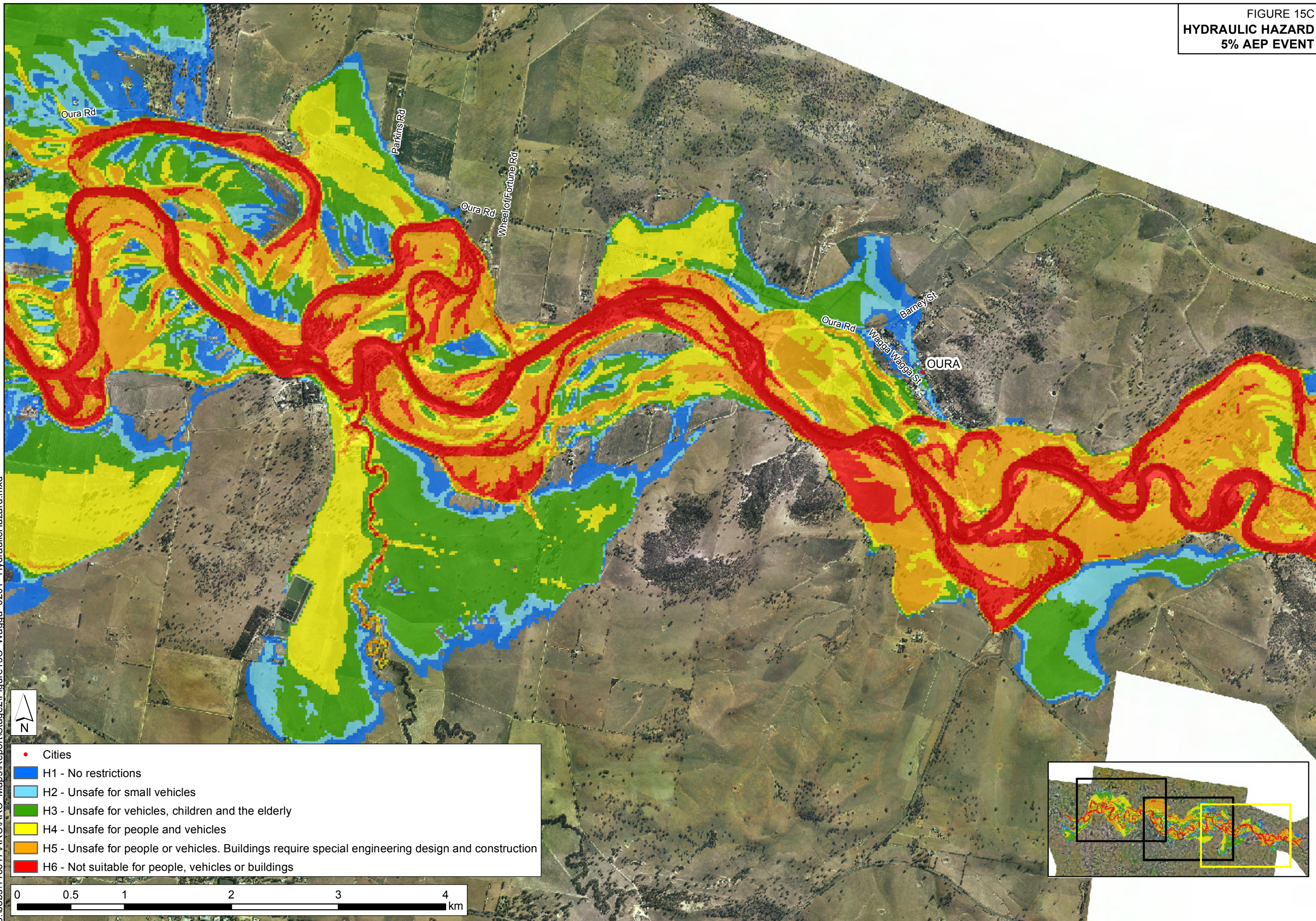


FIGURE 15C
HYDRAULIC HAZARD
5% AEP EVENT



J:\Jobs\1160\17\ARC\ARC Maps\Report\Stage2\Figure15C_Wagga_020Y_HydraulicHazard.mxd