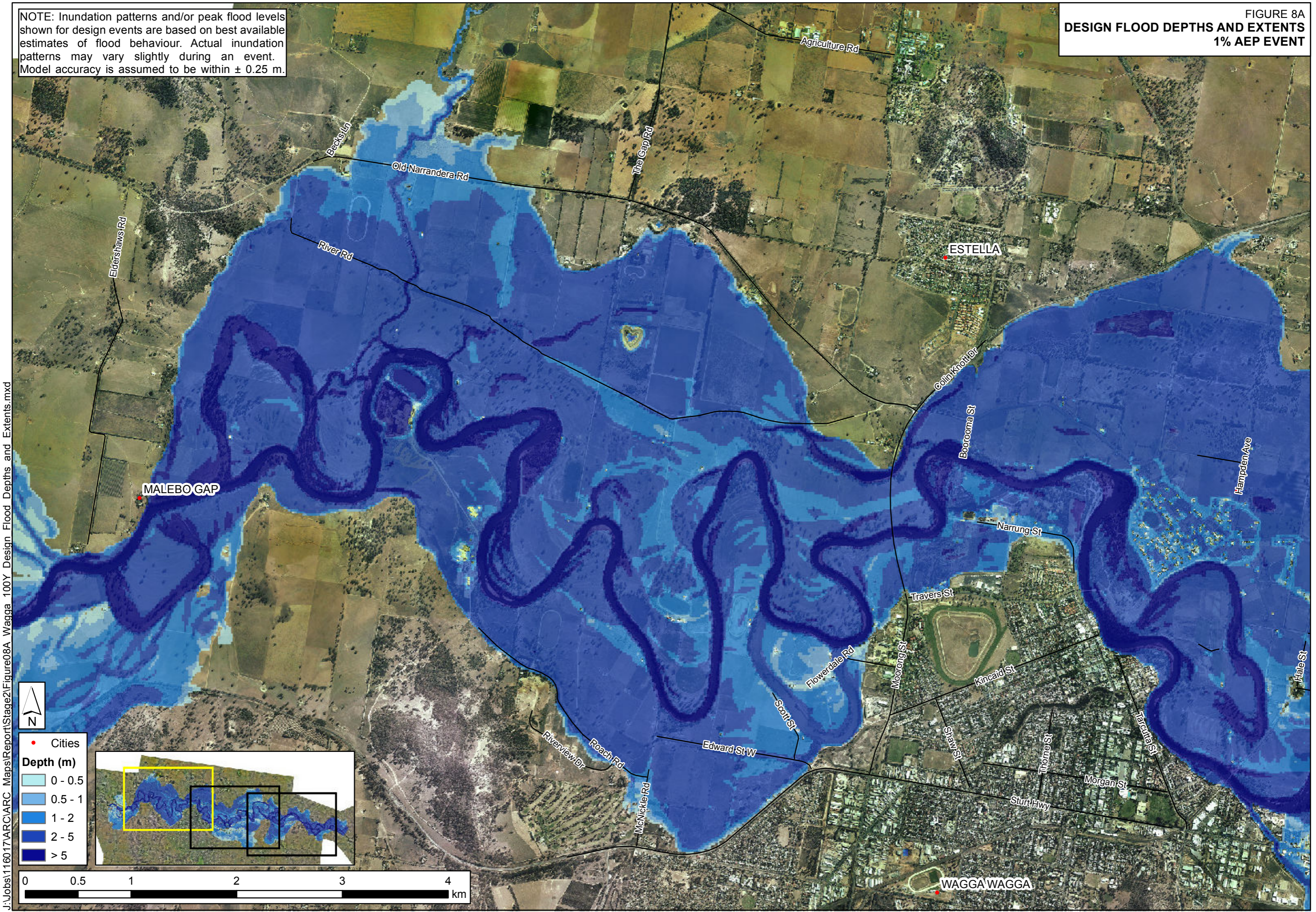


NOTE: Inundation patterns and/or peak flood levels shown for design events are based on best available estimates of flood behaviour. Actual inundation patterns may vary slightly during an event. Model accuracy is assumed to be within ± 0.25 m.

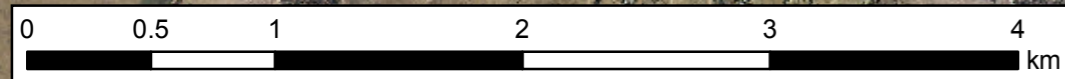
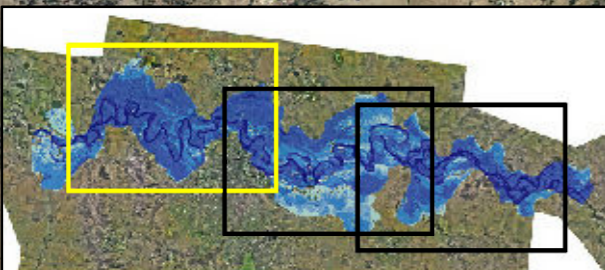
FIGURE 8A
DESIGN FLOOD DEPTHS AND EXTENTS
1% AEP EVENT



J:\Jobs\1160\17\ARC\ARC_Maps\Report\Stage2\Figure08A_Wagga_100Y_Design_Flood_Depths_and_Extents.mxd

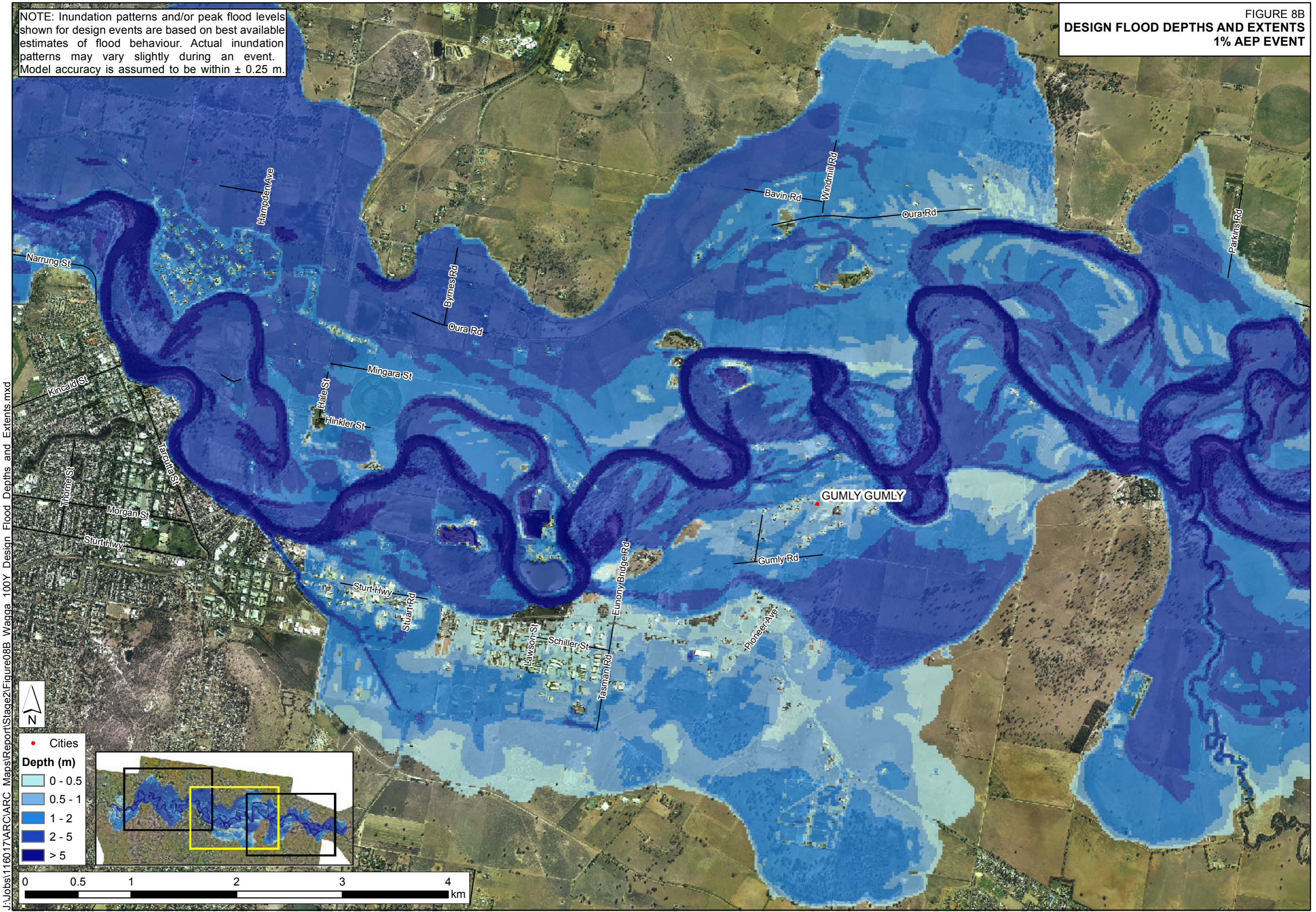


- Cities
- Depth (m)**
- 0 - 0.5
- 0.5 - 1
- 1 - 2
- 2 - 5
- > 5



NOTE: Inundation patterns and/or peak flood levels shown for design events are based on best available estimates of flood behaviour. Actual inundation patterns may vary slightly during an event. Model accuracy is assumed to be within ± 0.25 m.

FIGURE 8B
DESIGN FLOOD DEPTHS AND EXTENTS
1% AEP EVENT



J:\Jobs\1160\17\ARC\ARC Maps\Report\Stage2\Figure8B Wagga 100Y Design Flood Depths and Extents.mxd



• Cities

Depth (m)

- 0 - 0.5
- 0.5 - 1
- 1 - 2
- 2 - 5
- > 5

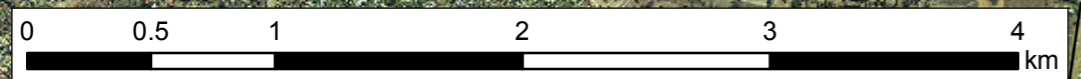
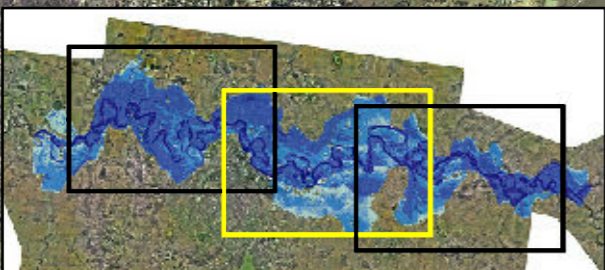
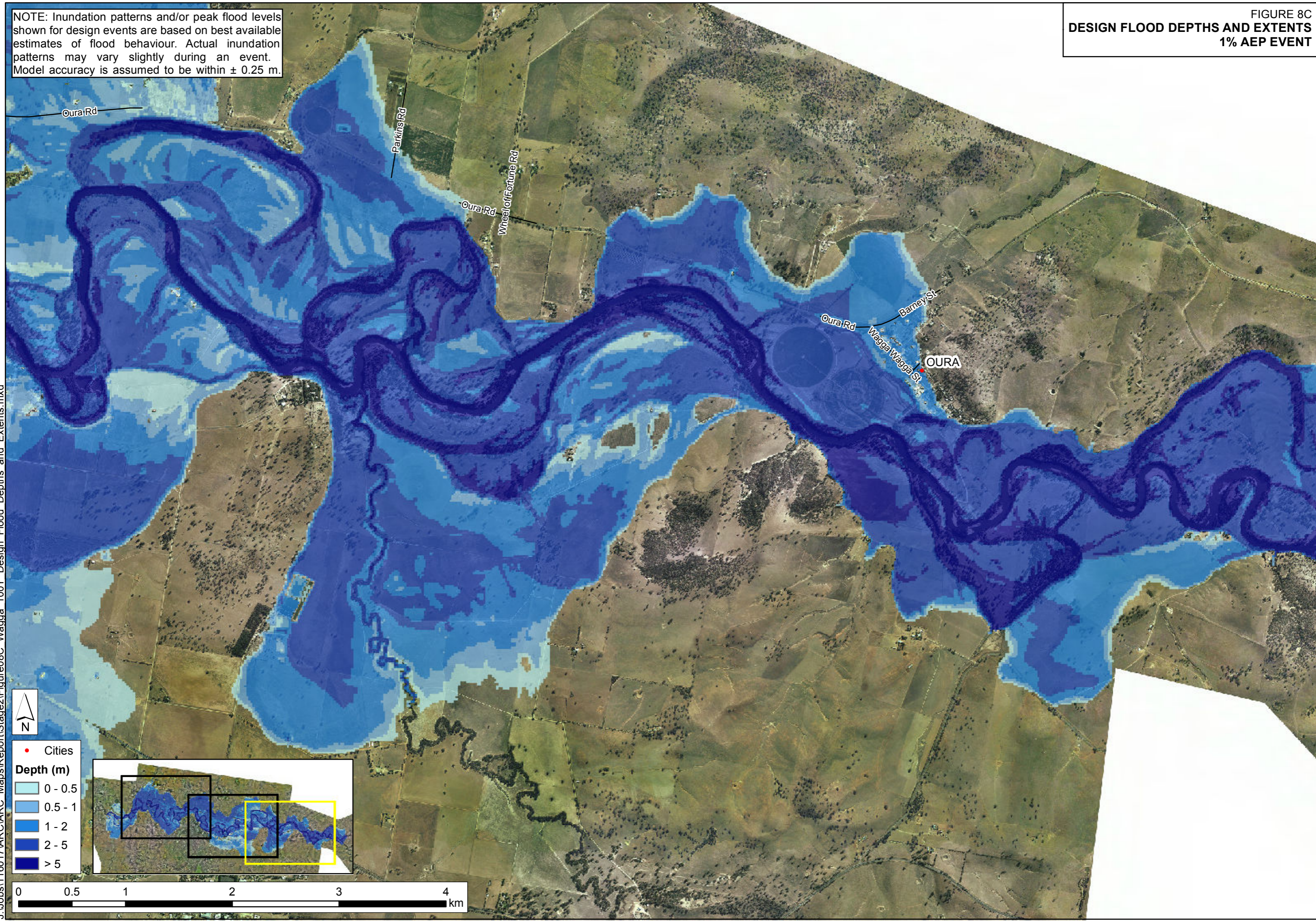


FIGURE 8C
DESIGN FLOOD DEPTHS AND EXTENTS
1% AEP EVENT

NOTE: Inundation patterns and/or peak flood levels shown for design events are based on best available estimates of flood behaviour. Actual inundation patterns may vary slightly during an event. Model accuracy is assumed to be within ± 0.25 m.



J:\Jobs\1160\17\ARC\ARC_Maps\Report\Stage2\Figure8C_Wagga_100Y_Design_Flood_Depths_and_Extents.mxd



• Cities

Depth (m)

- 0 - 0.5
- 0.5 - 1
- 1 - 2
- 2 - 5
- > 5

